

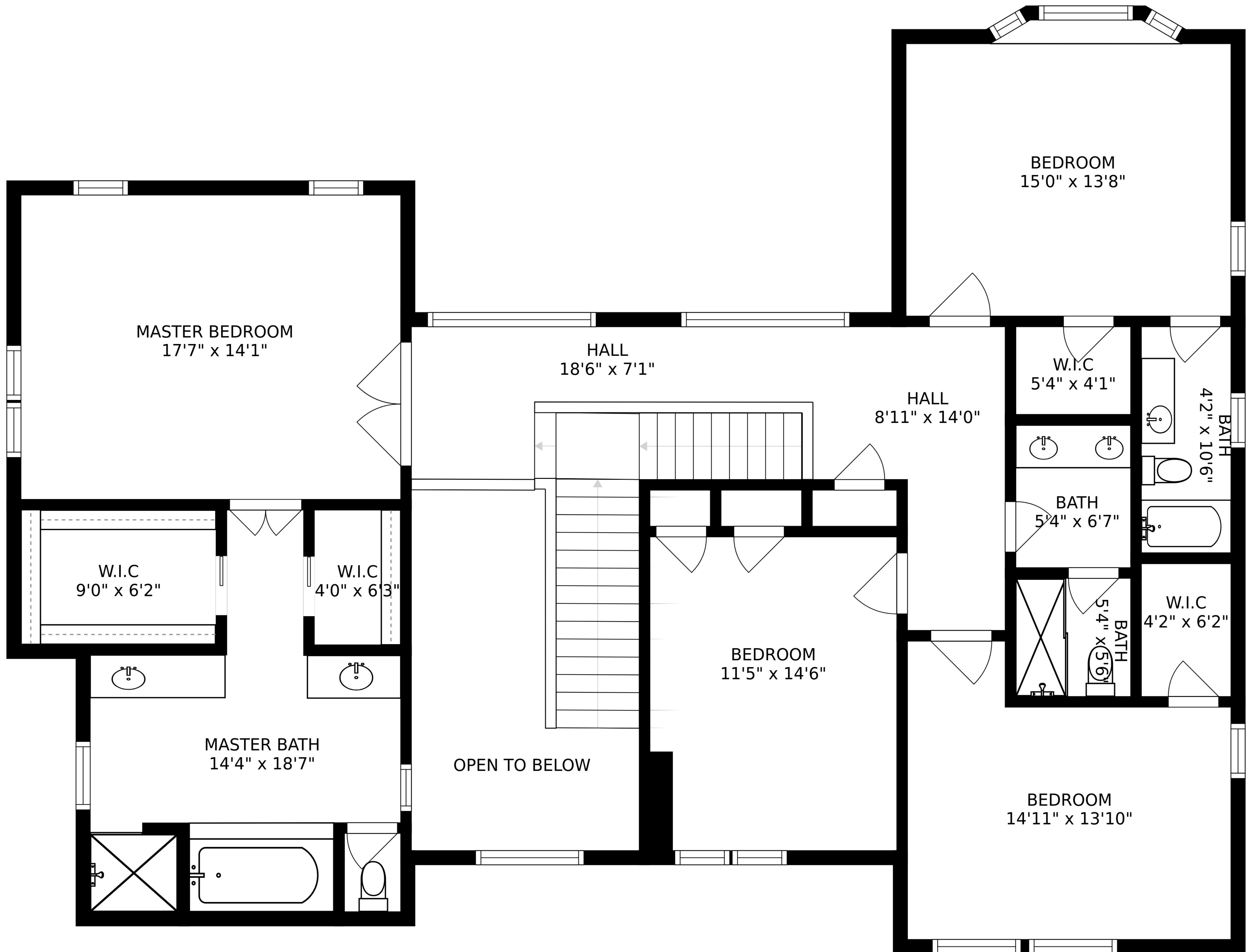
SIZES AND DIMENSIONS ARE APPROXIMATE, ACTUAL MAY VARY.



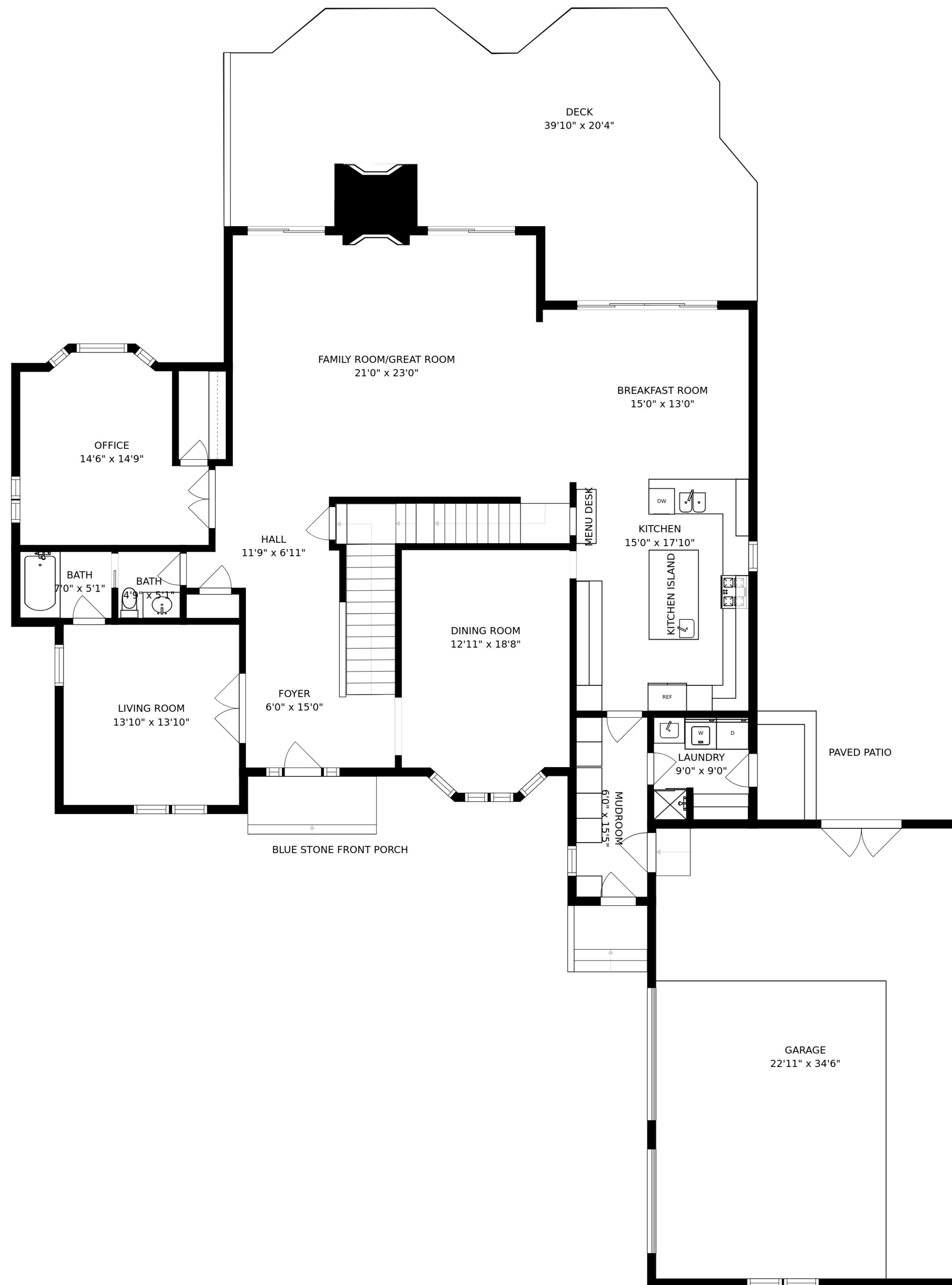
ATTIC
11'1" x 15'4"

The image shows a floor plan of an attic room. The room is rectangular and is mostly empty. On the right side, there is a narrow vertical strip representing a door or window frame, with a small rectangular opening. The room is labeled 'ATTIC' and has dimensions of '11'1" x 15'4" centered in the middle.

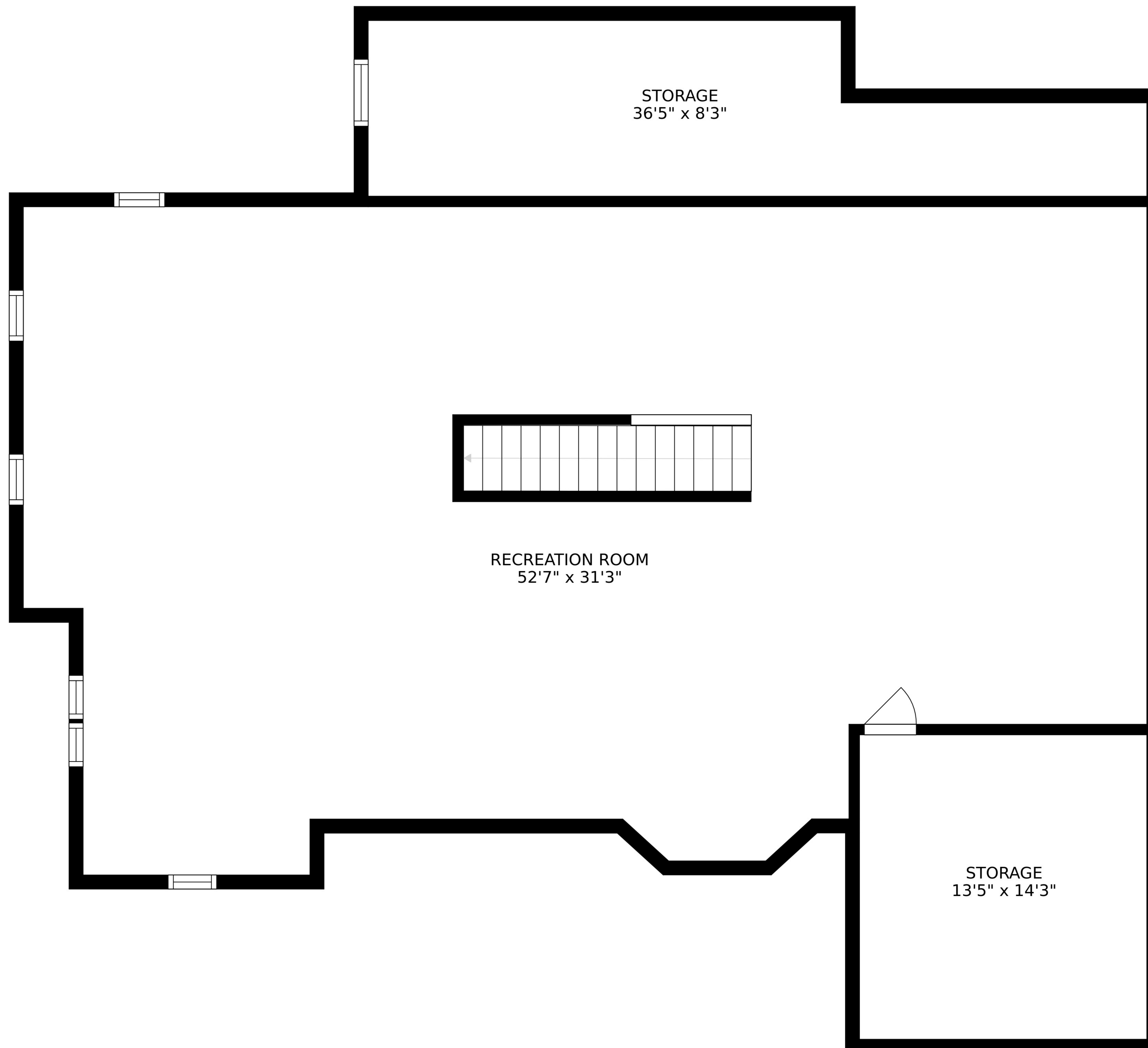
SIZES AND DIMENSIONS ARE APPROXIMATE, ACTUAL MAY VARY.



SIZES AND DIMENSIONS ARE APPROXIMATE, ACTUAL MAY VARY.



SIZES AND DIMENSIONS ARE APPROXIMATE, ACTUAL MAY VARY.



SIZES AND DIMENSIONS ARE APPROXIMATE, ACTUAL MAY VARY.