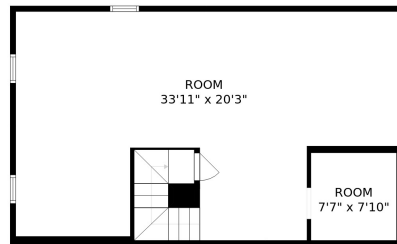
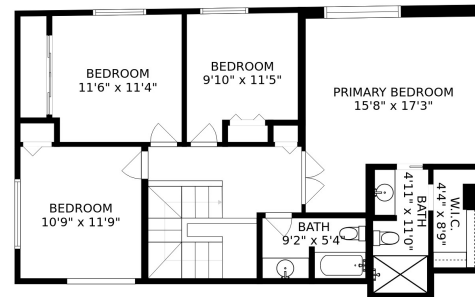


FLOOR 2

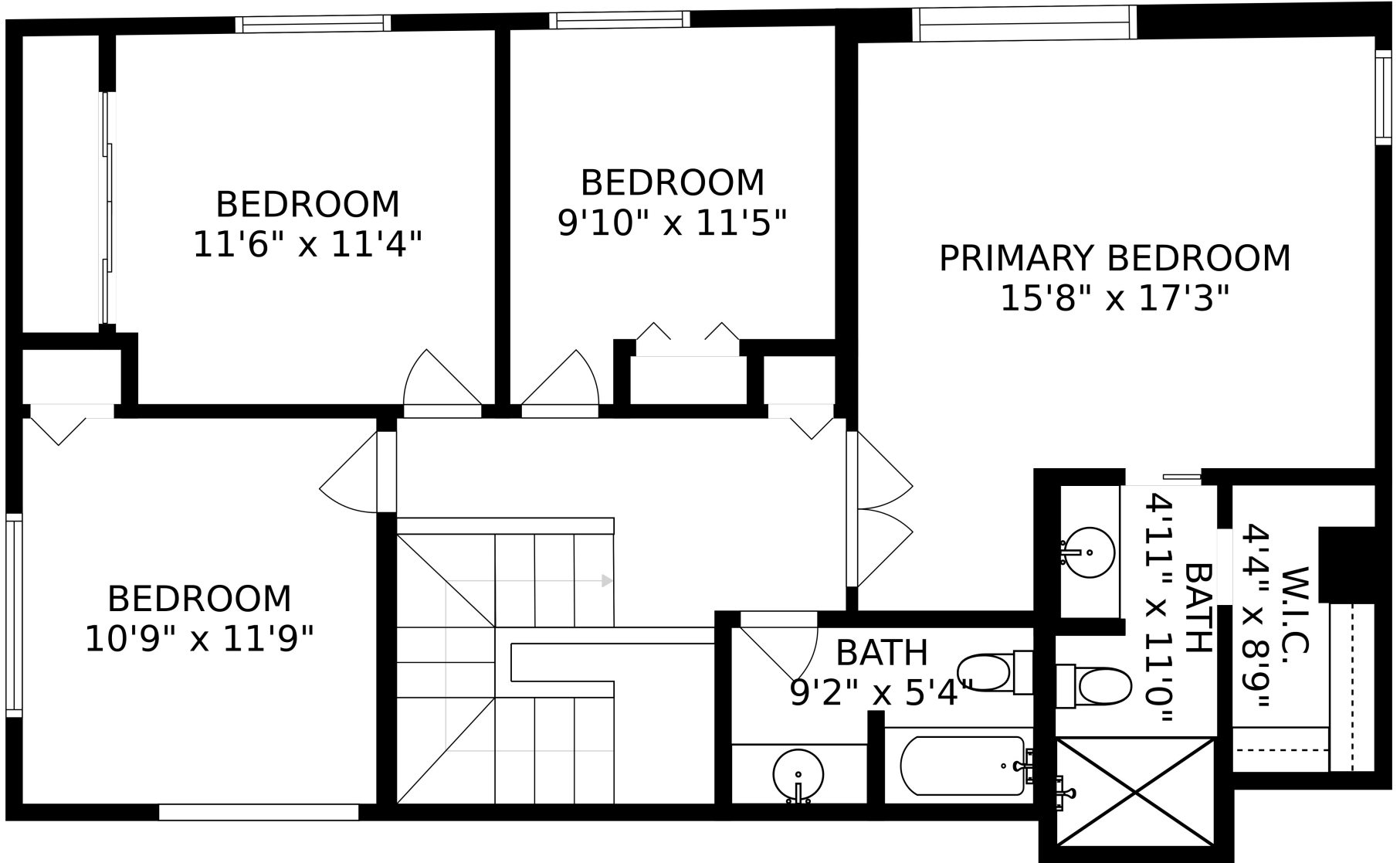


FLOOR 1

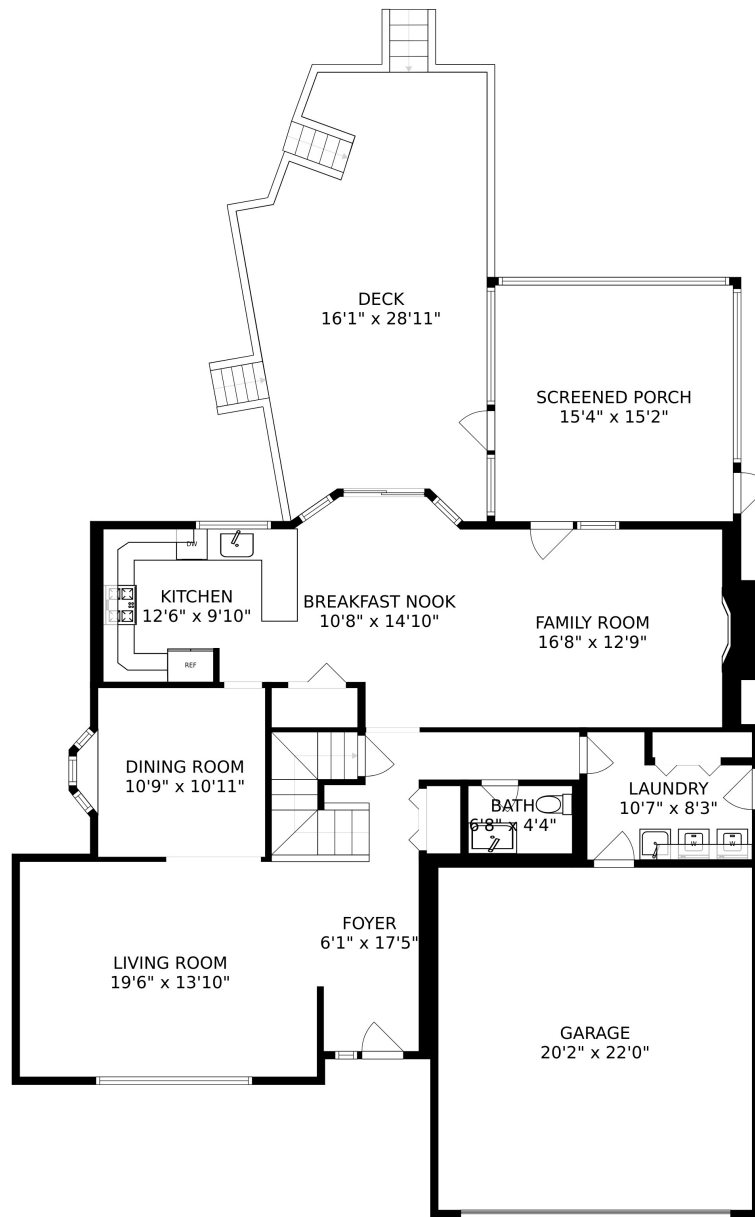


FLOOR 3

SIZES AND DIMENSIONS ARE APPROXIMATE, ACTUAL MAY VARY.



SIZES AND DIMENSIONS ARE APPROXIMATE, ACTUAL MAY VARY.



SIZES AND DIMENSIONS ARE APPROXIMATE, ACTUAL MAY VARY.

ROOM  
33'11" x 20'3"

The floor plan shows a large rectangular room with a thick black border. In the lower-left portion, there is a staircase with a central black square representing the landing. A grey arrow points from the landing towards the top-left corner of the room. To the right of the staircase is a smaller, square room with a thick black border. The main room has a door on the left wall and a window on the top wall. The smaller room has a door on the left wall.

ROOM  
7'7" x 7'10"

SIZES AND DIMENSIONS ARE APPROXIMATE, ACTUAL MAY VARY.