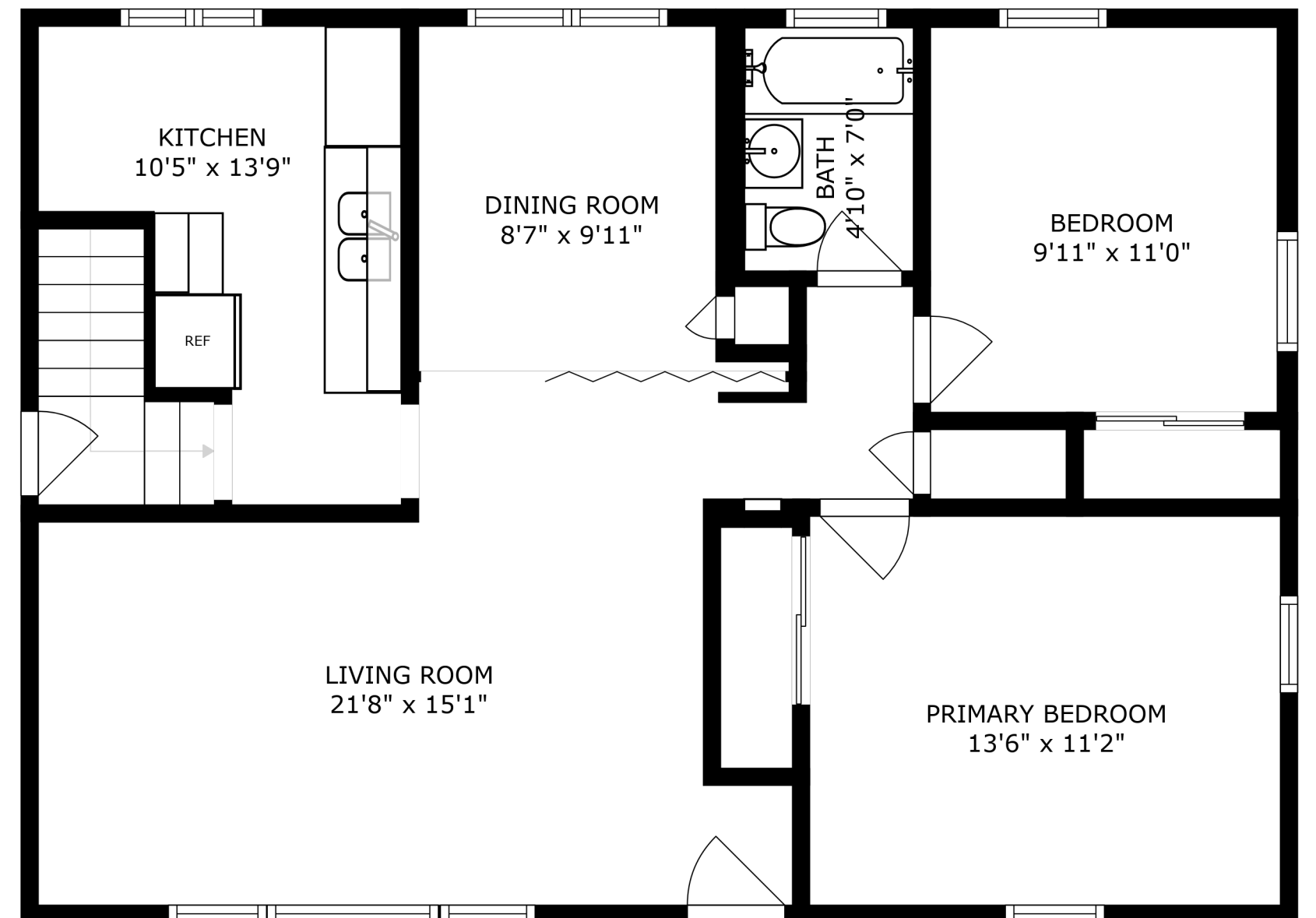
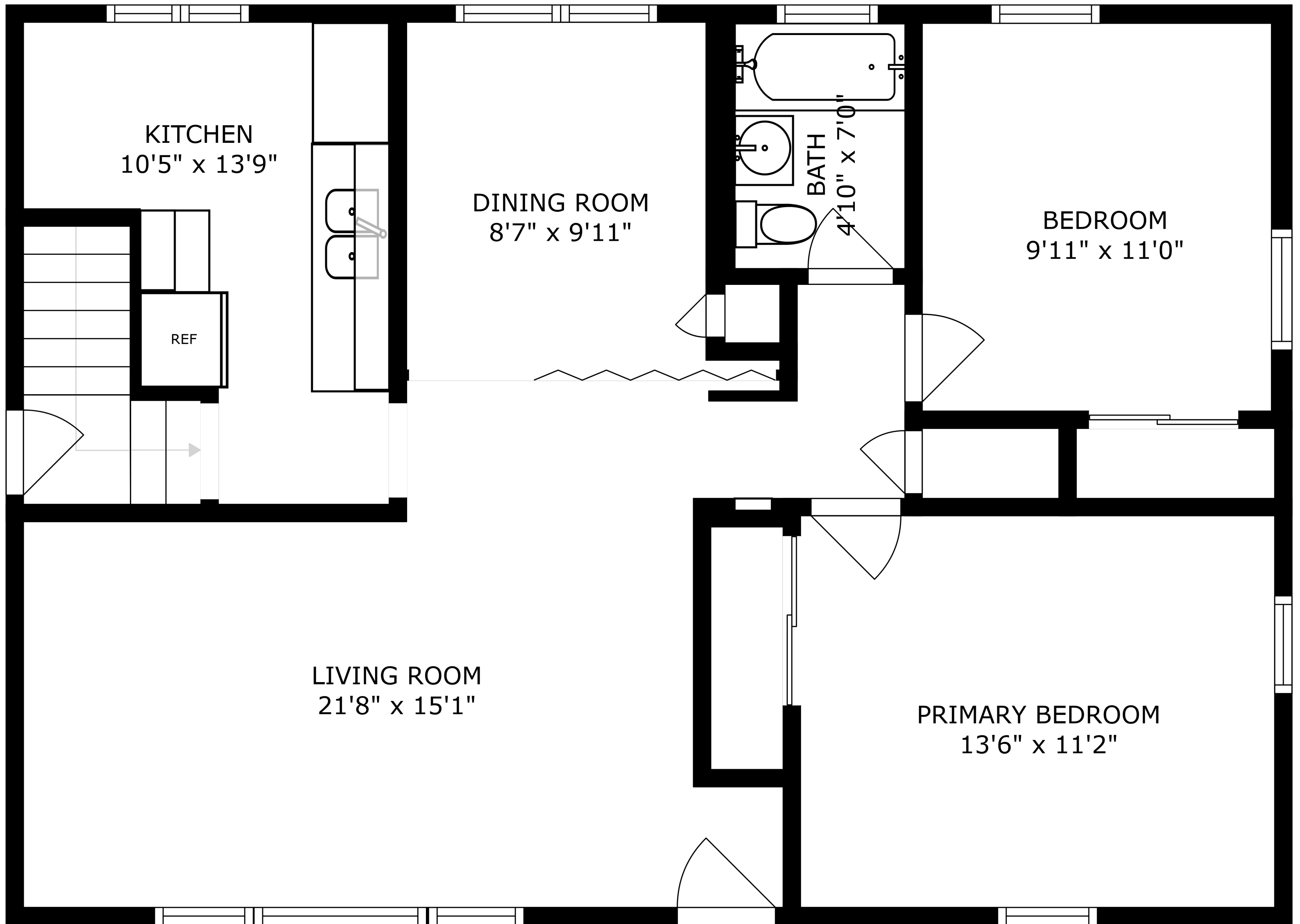


FLOOR 1



FLOOR 2



KITCHEN  
10'5" x 13'9"

DINING ROOM  
8'7" x 9'11"

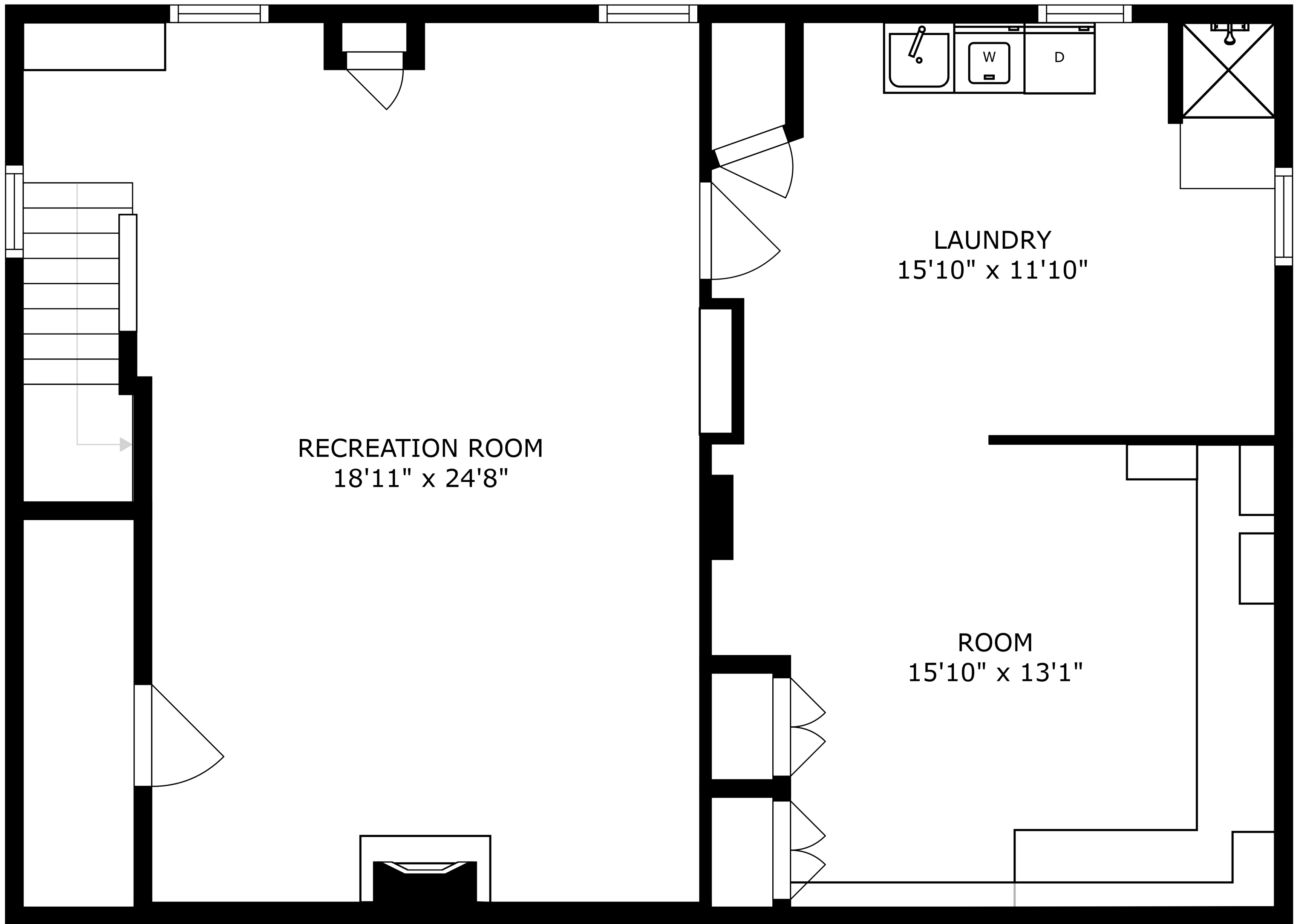
BEDROOM  
9'11" x 11'0"

BATH  
4'10" x 7'0"

REF

LIVING ROOM  
21'8" x 15'1"

PRIMARY BEDROOM  
13'6" x 11'2"



SIZES AND DIMENSIONS ARE APPROXIMATE, ACTUAL MAY VARY.