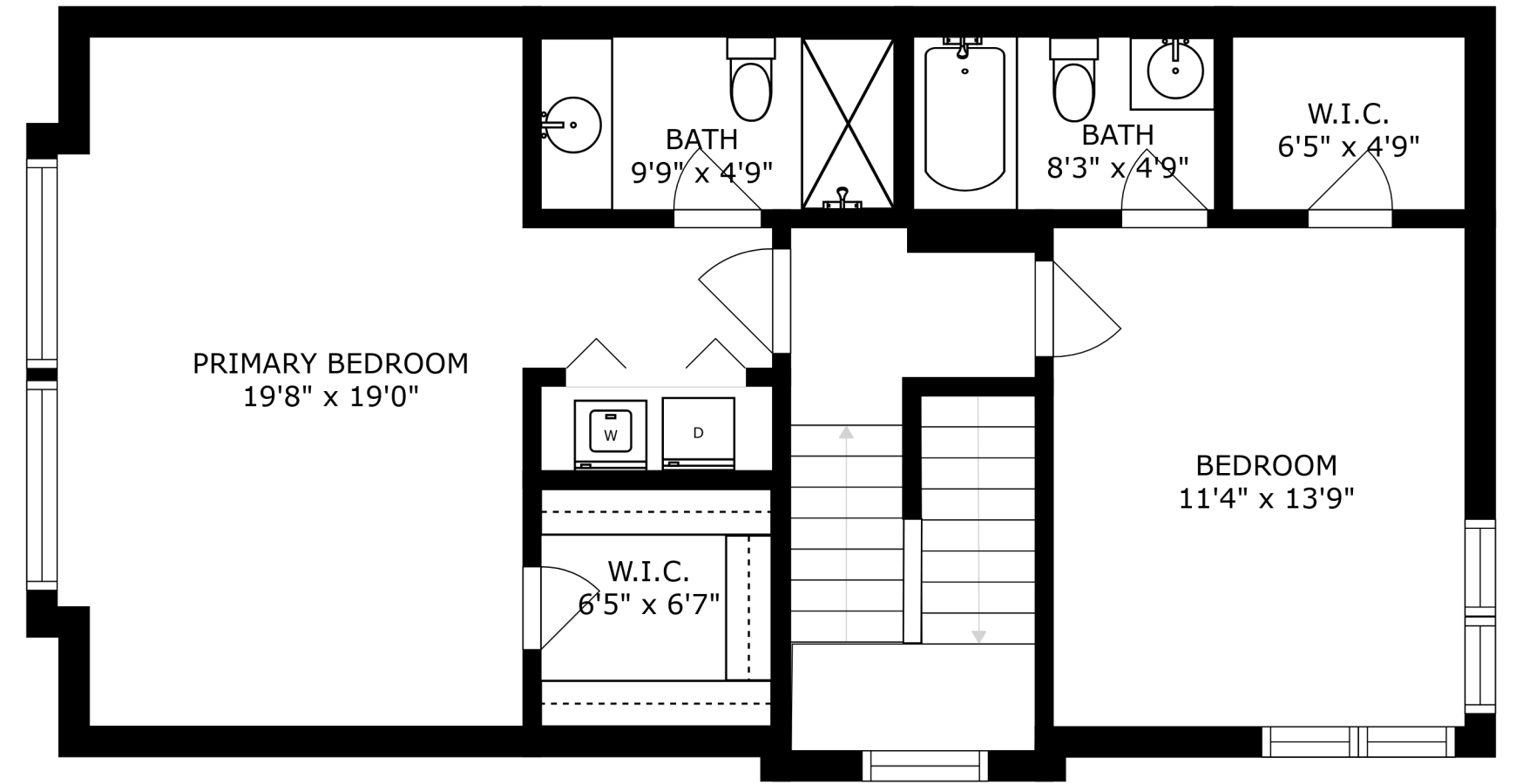
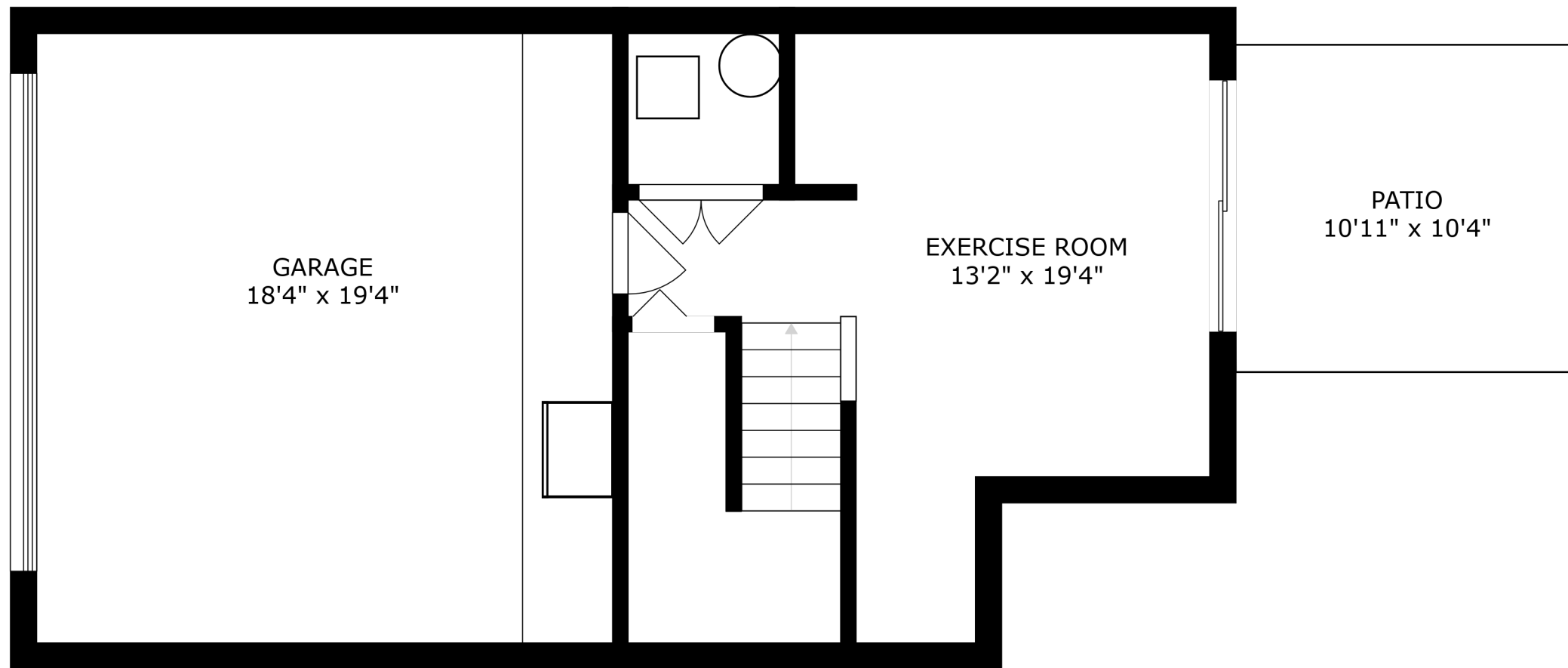


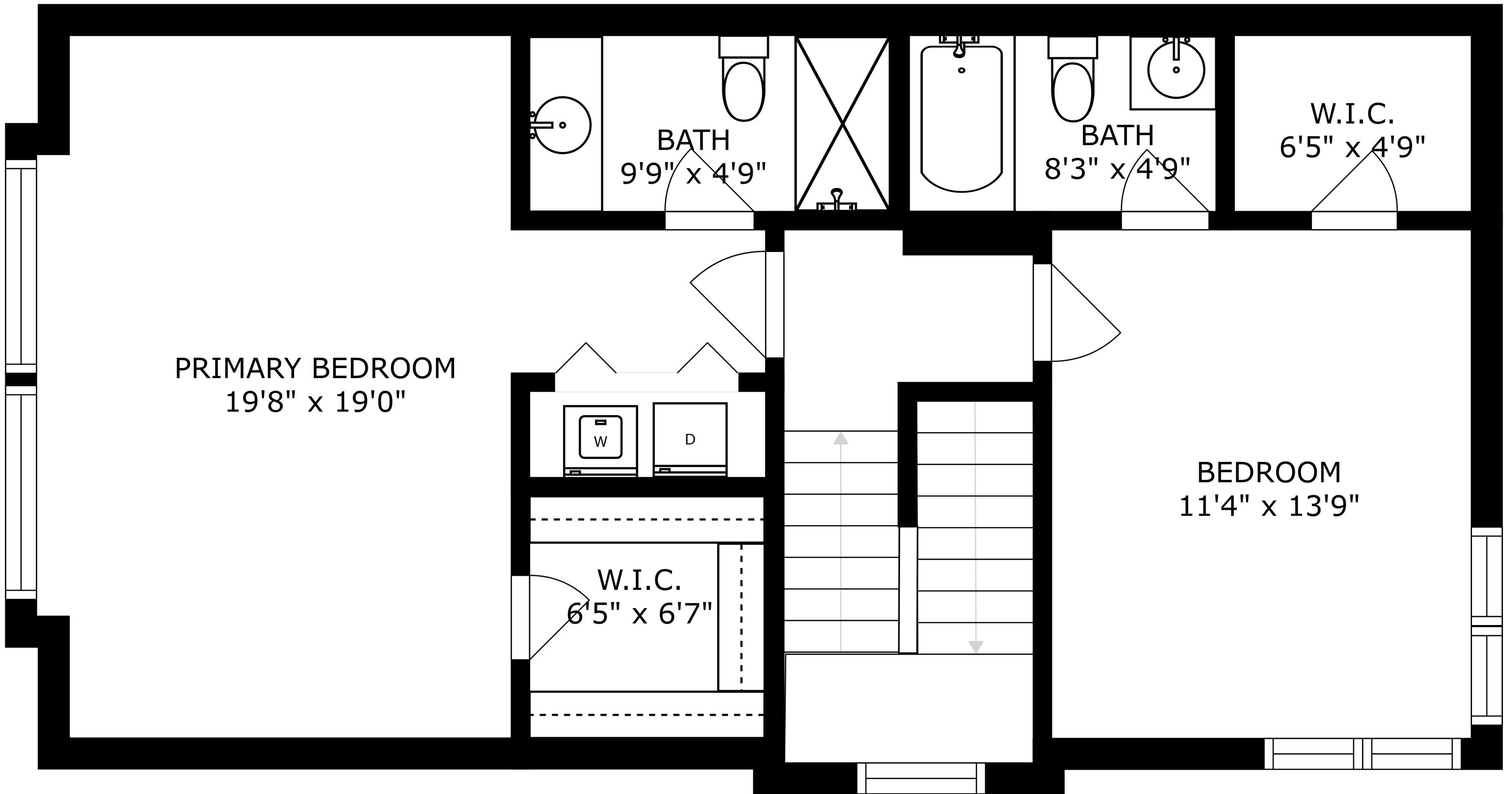
FLOOR 2



FLOOR 3



FLOOR 1



PRIMARY BEDROOM
19'8" x 19'0"

BATH
9'9" x 4'9"

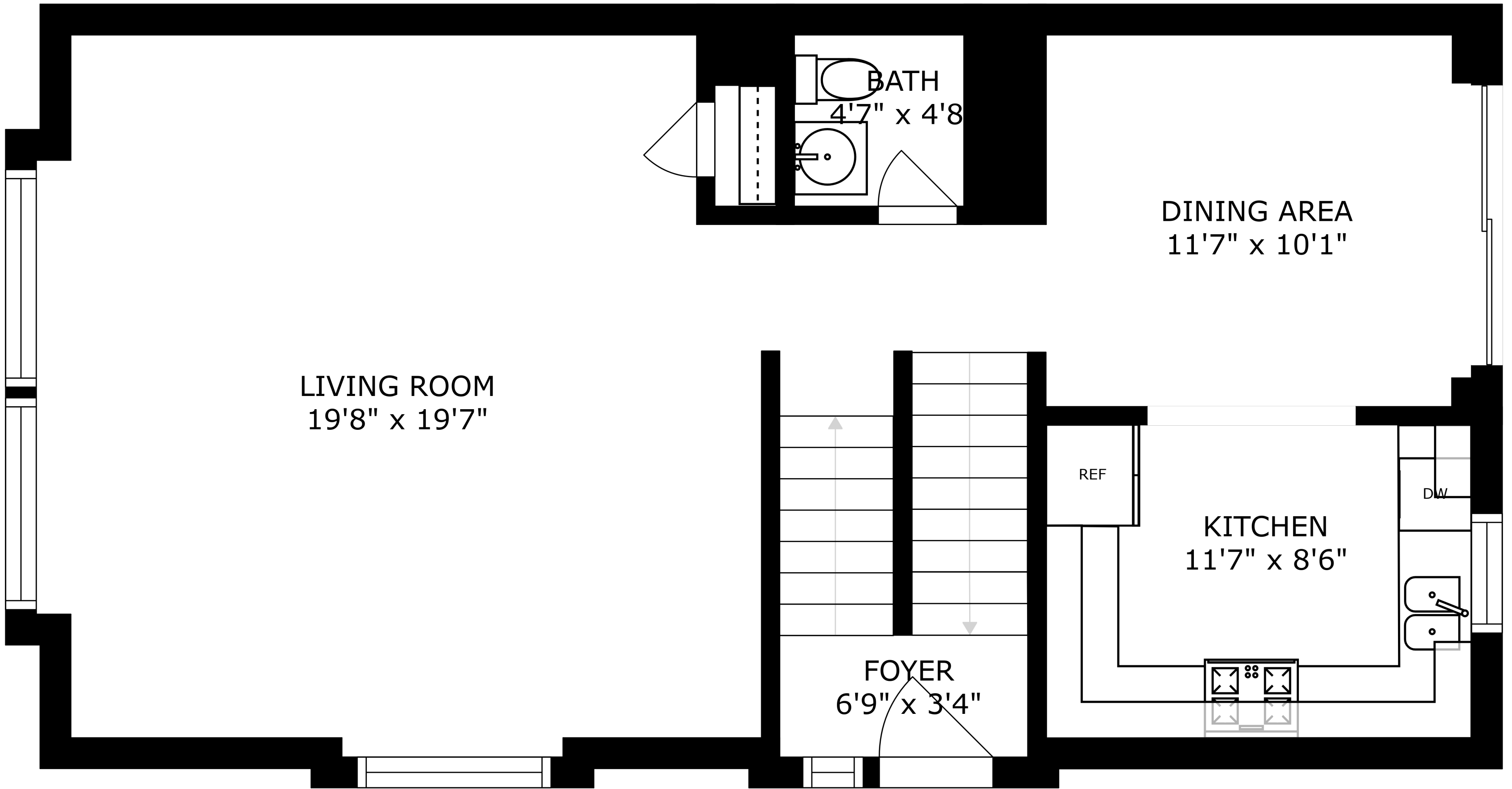
BATH
8'3" x 4'9"

W.I.C.
6'5" x 4'9"

W D

W.I.C.
6'5" x 6'7"

BEDROOM
11'4" x 13'9"



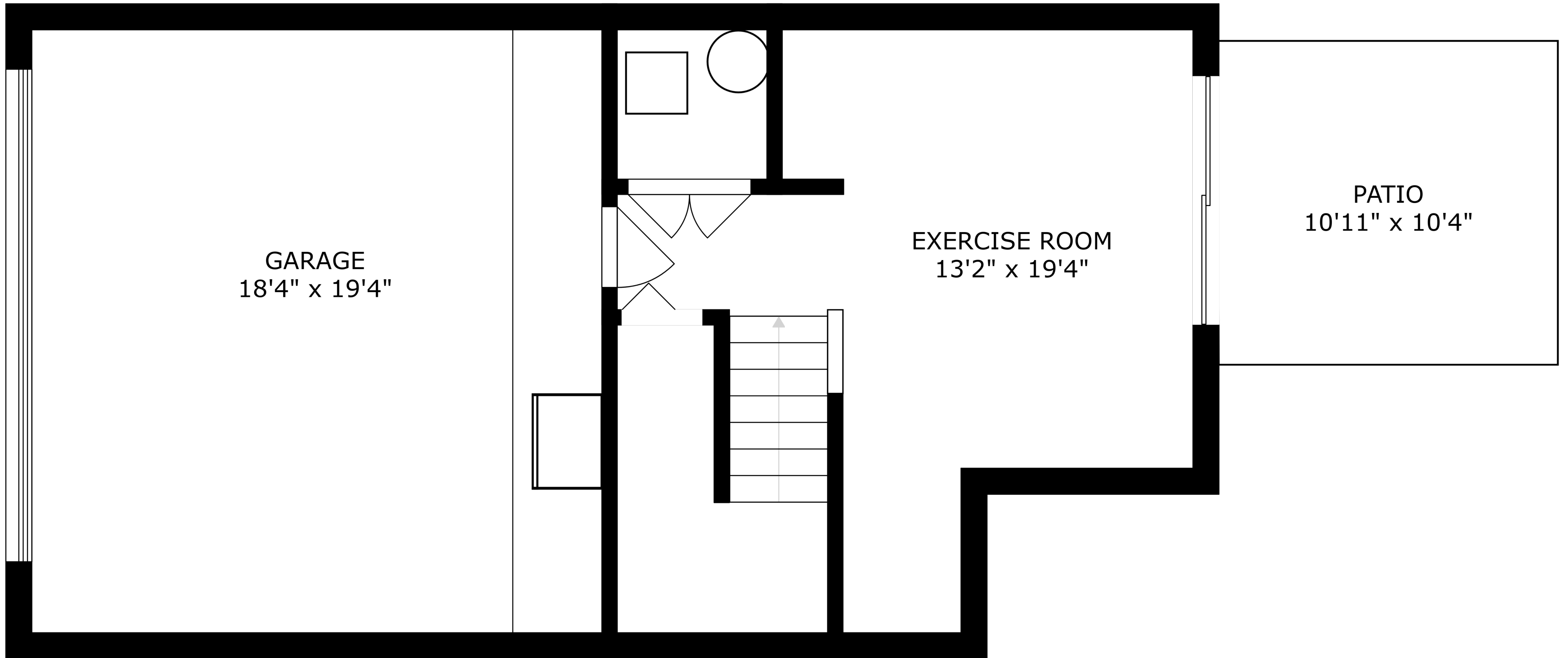
LIVING ROOM
19'8" x 19'7"

FOYER
6'9" x 3'4"

BATH
4'7" x 4'8"

DINING AREA
11'7" x 10'1"

KITCHEN
11'7" x 8'6"



SIZES AND DIMENSIONS ARE APPROXIMATE, ACTUAL MAY VARY.