

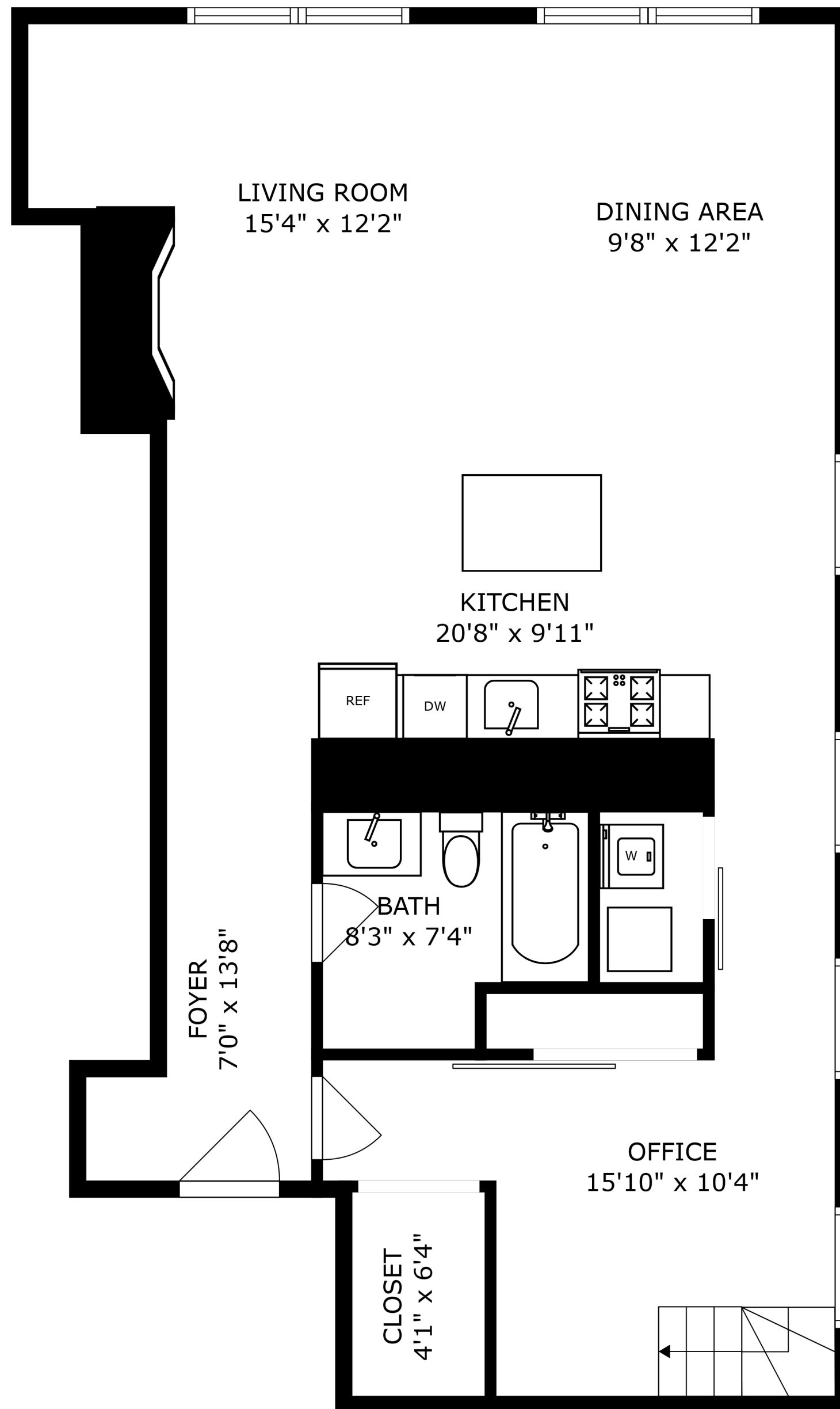
SIZES AND DIMENSIONS ARE APPROXIMATE, ACTUAL MAY VARY.



A floor plan diagram showing a primary bedroom on the left and a staircase on the right. The bedroom is a large rectangle with a thick black border on its left and bottom sides. The staircase is a series of vertical lines of varying heights, with a horizontal line at the top and a horizontal line at the bottom. An arrow points from the top of the staircase towards the bedroom. The text 'PRIMARY BEDROOM' and '9'6" x 8'7"' is centered in the bedroom area.

PRIMARY BEDROOM
9'6" x 8'7"

SIZES AND DIMENSIONS ARE APPROXIMATE, ACTUAL MAY VARY.



SIZES AND DIMENSIONS ARE APPROXIMATE, ACTUAL MAY VARY.