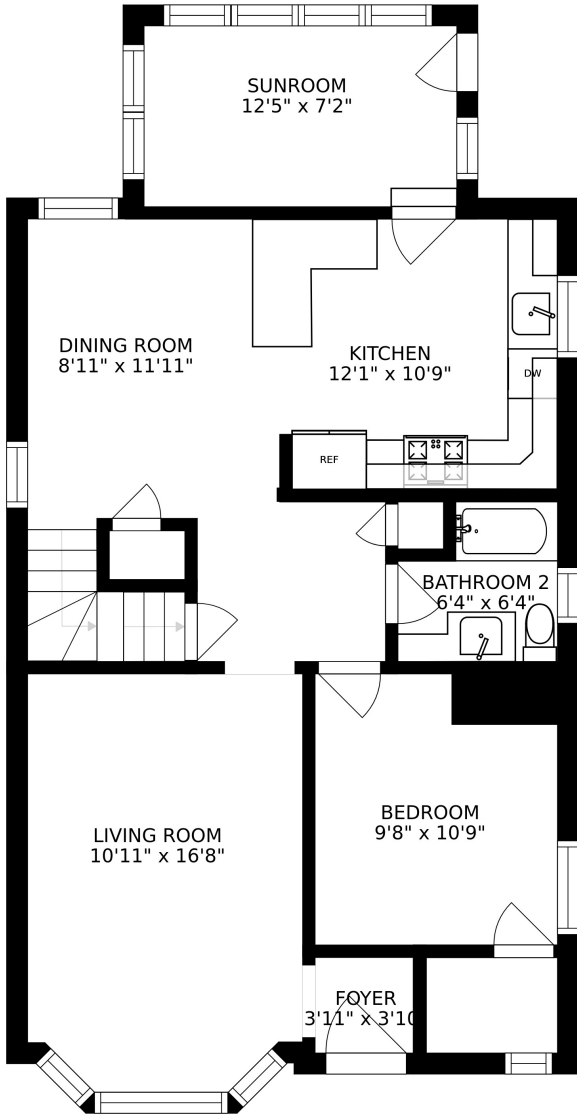


BASEMENT
20'8" x 34'9"

BATHROOM
5'5" x 8'3"

LAUNDRY
5'5" x 15'1"

FLOOR 1



SUNROOM
12'5" x 7'2"

DINING ROOM
8'11" x 11'11"

KITCHEN
12'1" x 10'9"

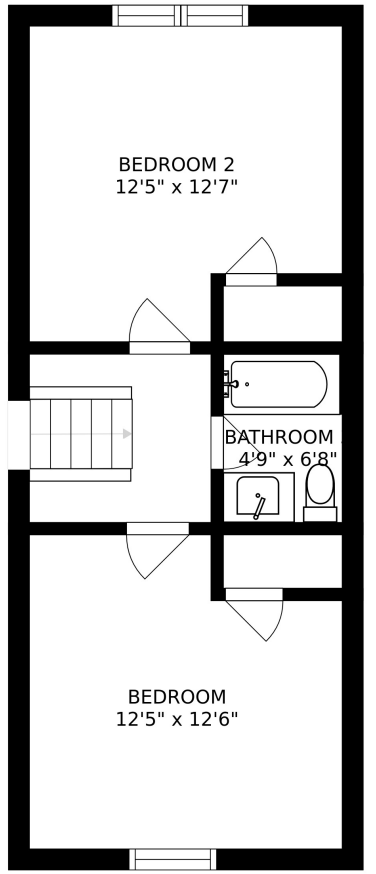
LIVING ROOM
10'11" x 16'8"

BEDROOM
9'8" x 10'9"

BATHROOM 2
6'4" x 6'4"

FOYER
3'11" x 3'10"

FLOOR 2



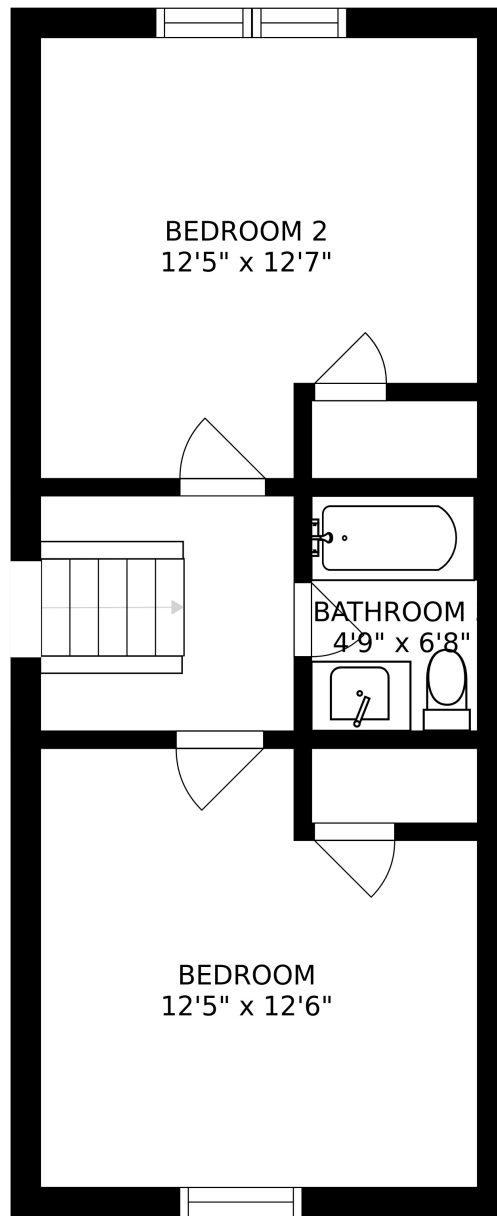
BEDROOM 2
12'5" x 12'7"

BATHROOM
4'9" x 6'8"

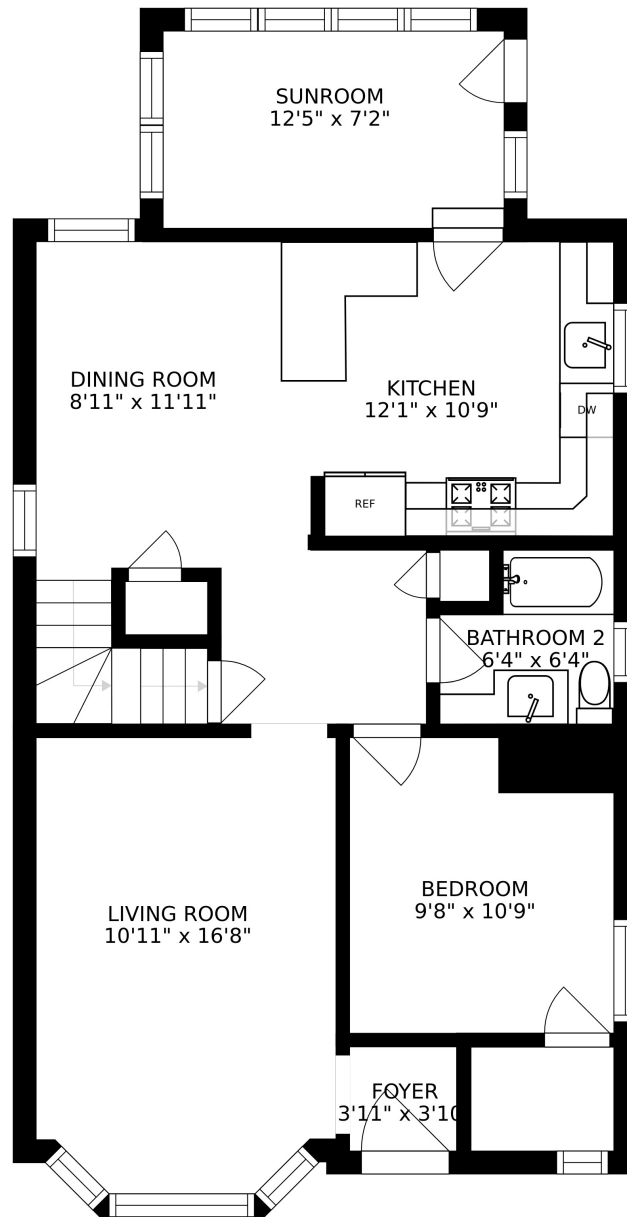
BEDROOM
12'5" x 12'6"

FLOOR 3

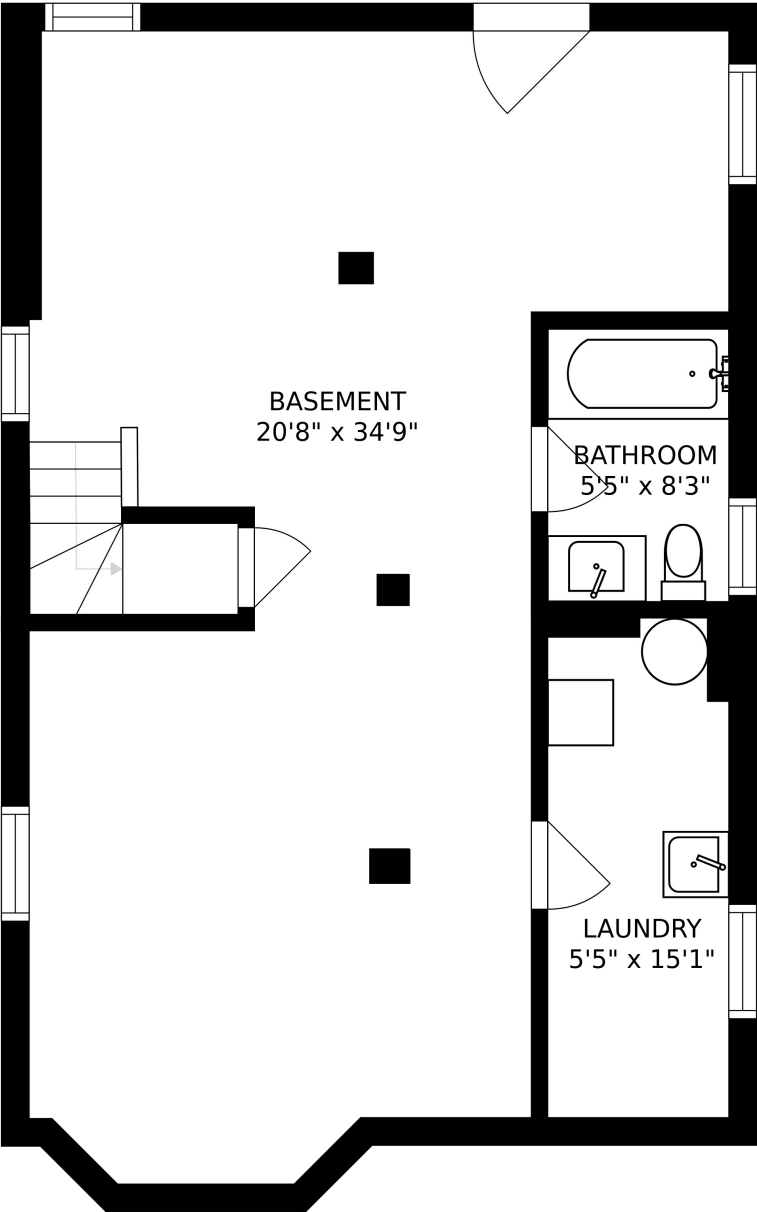
SIZES AND DIMENSIONS ARE APPROXIMATE, ACTUAL MAY VARY.



SIZES AND DIMENSIONS ARE APPROXIMATE, ACTUAL MAY VARY.



SIZES AND DIMENSIONS ARE APPROXIMATE, ACTUAL MAY VARY.



SIZES AND DIMENSIONS ARE APPROXIMATE, ACTUAL MAY VARY.