

PATIO
11'6" x 14'11"

PATIO
28'6" x 19'9"

FAMILY ROOM
19'3" x 13'7"

EATING AREA
19'3" x 9'3"

KITCHEN
14'1" x 9'10"

PRIMARY BATH
5'8" x 4'6"

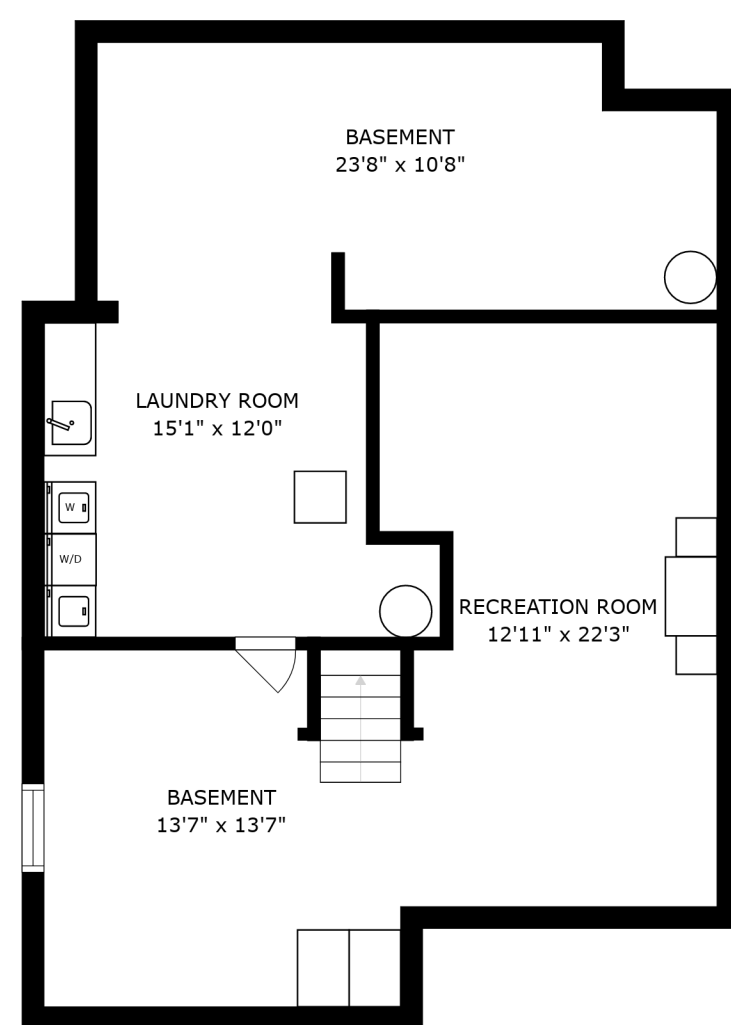
PRIMARY BEDROOM
10'1" x 10'9"

LIVING ROOM
12'1" x 22'3"

PORCH
12'1" x 5'6"

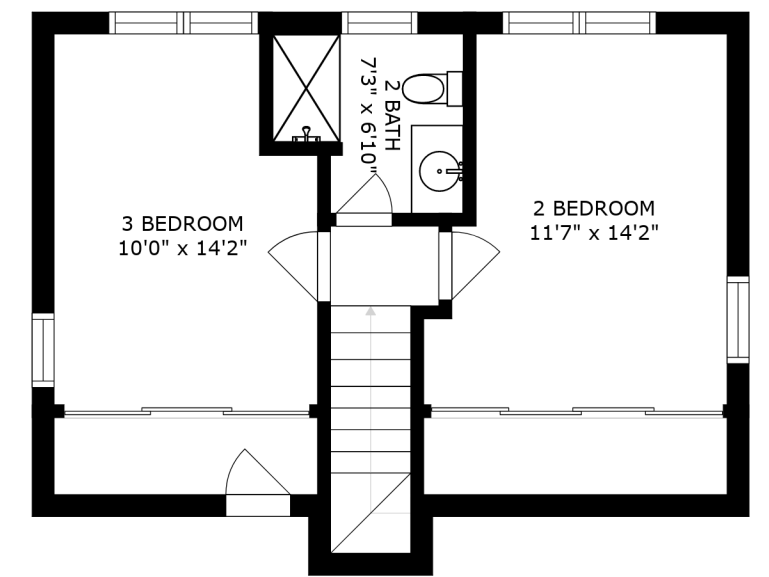
GARAGE
24'8" x 22'11"

PATIO
7'4" x 24'7"



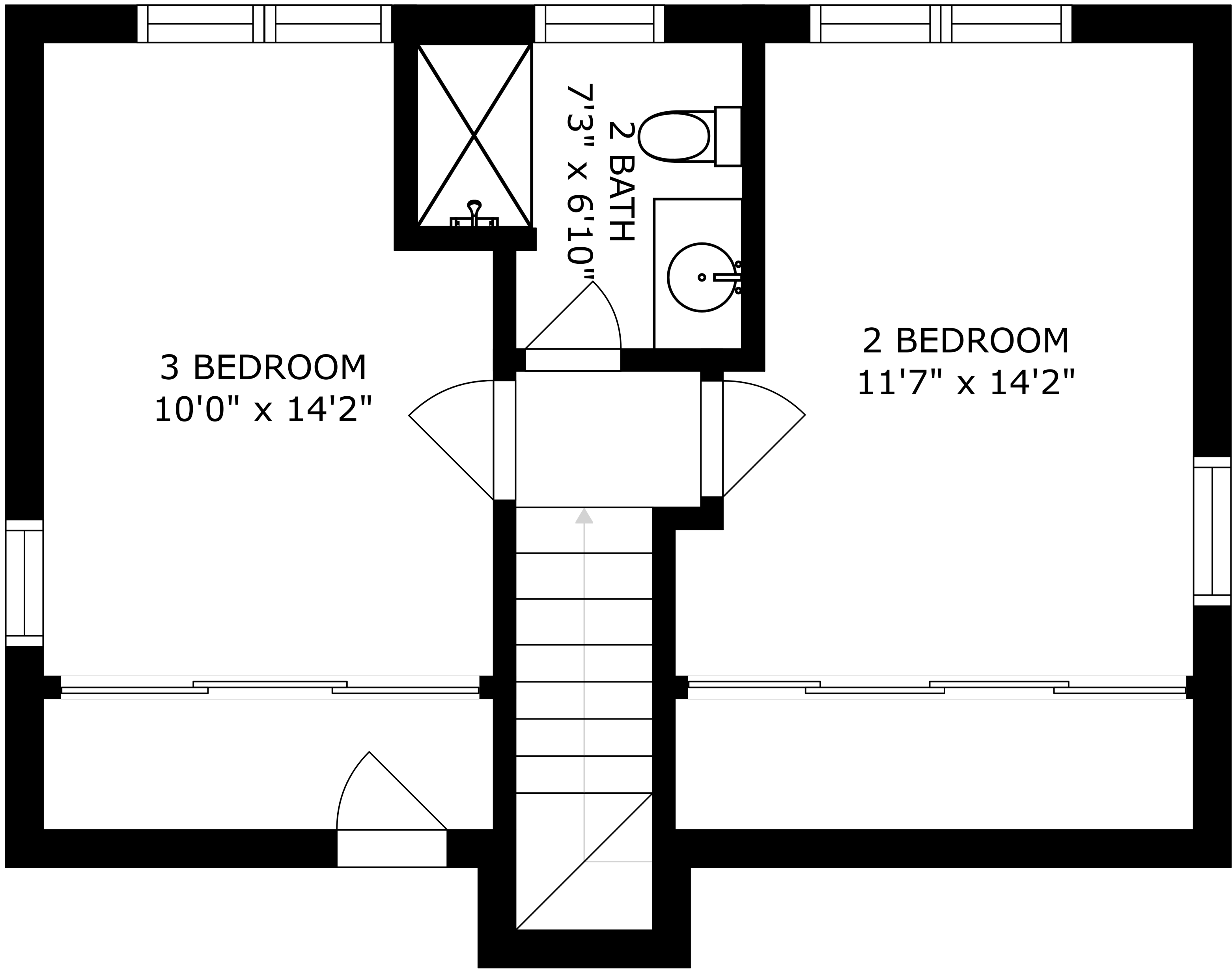
FLOOR 1

FLOOR 2



FLOOR 3

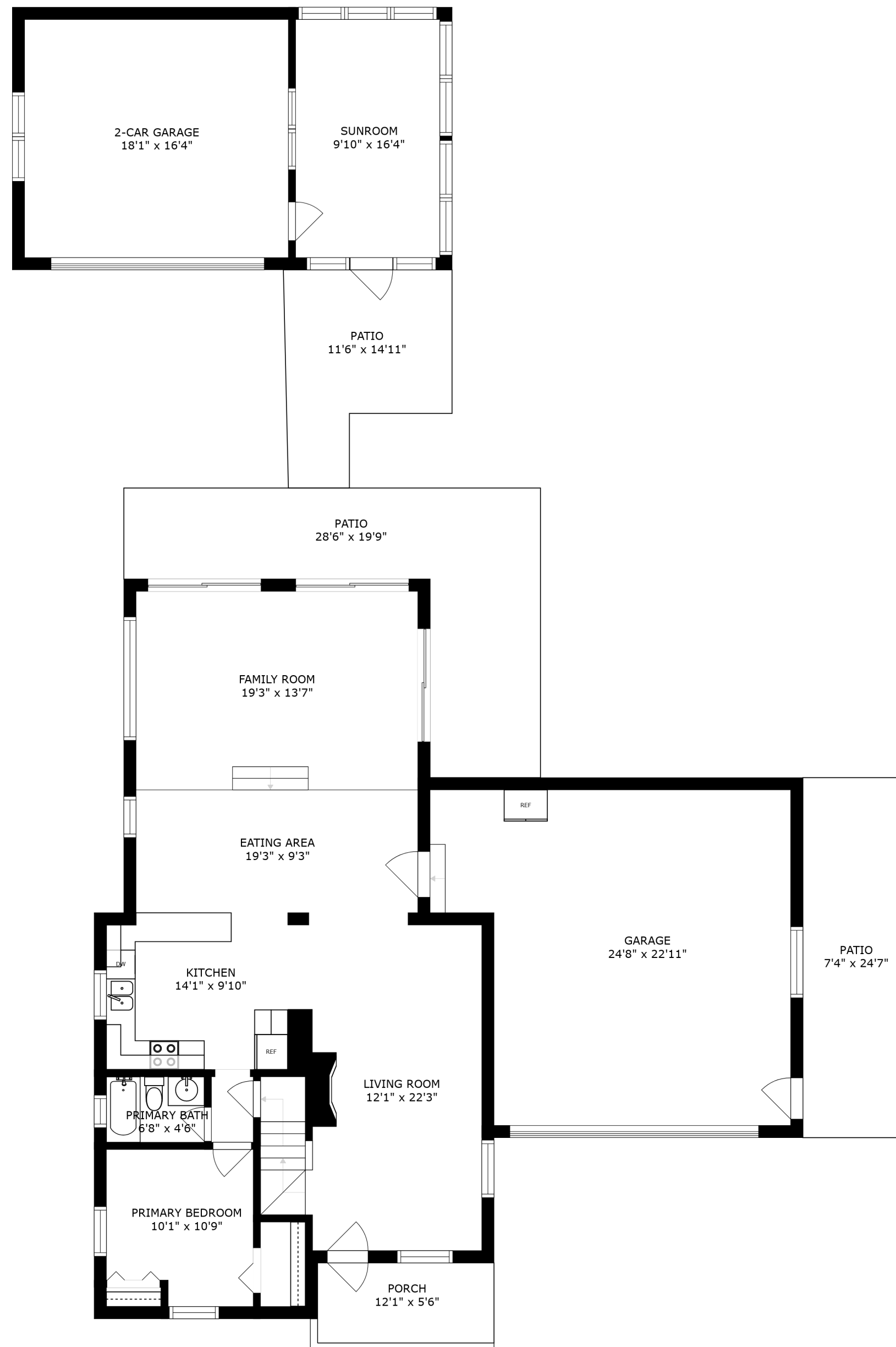
SIZES AND DIMENSIONS ARE APPROXIMATE, ACTUAL MAY VARY.



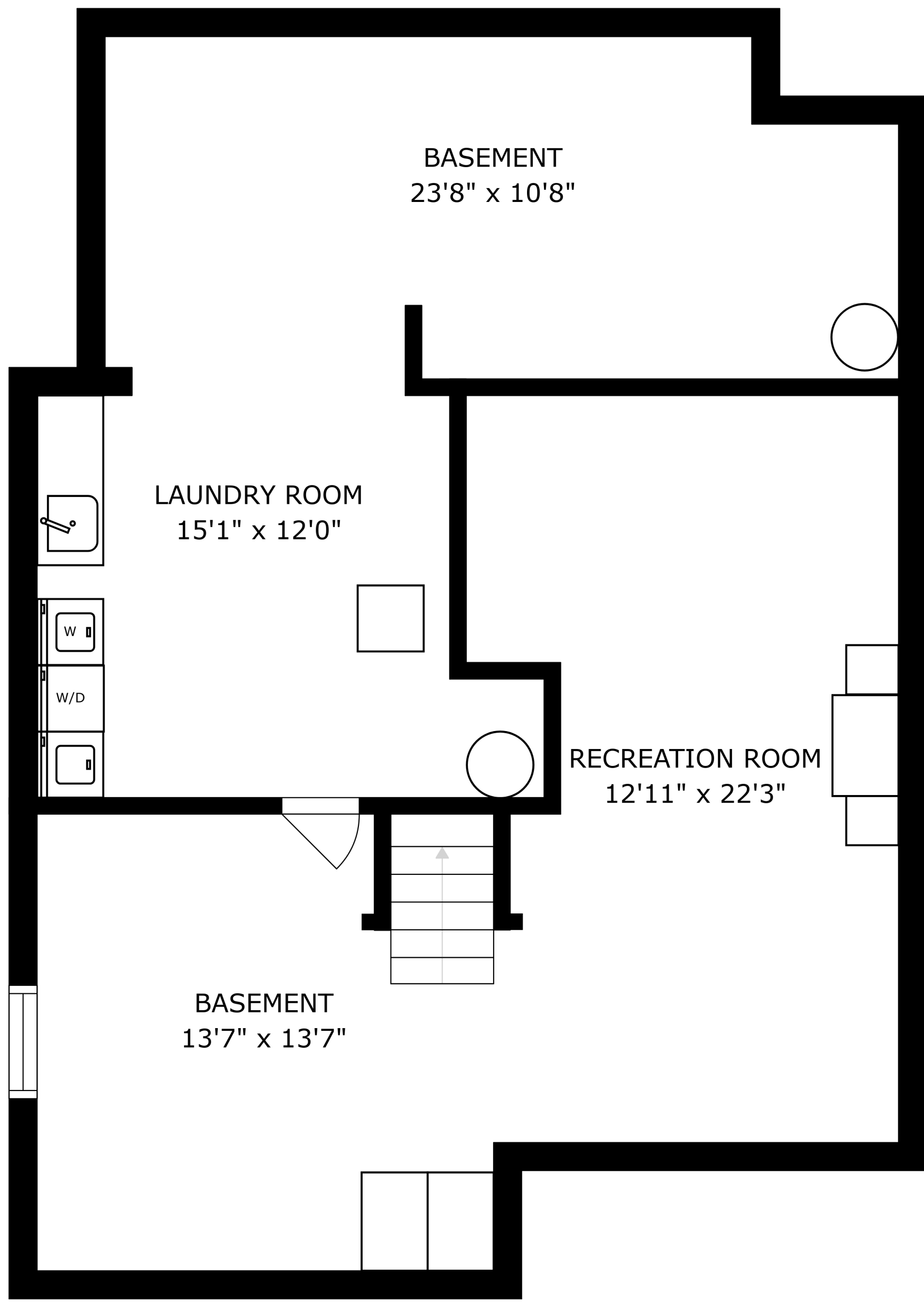
3 BEDROOM
10'0" x 14'2"

2 BATH
7'3" x 6'10"

2 BEDROOM
11'7" x 14'2"



SIZES AND DIMENSIONS ARE APPROXIMATE, ACTUAL MAY VARY.



SIZES AND DIMENSIONS ARE APPROXIMATE, ACTUAL MAY VARY.