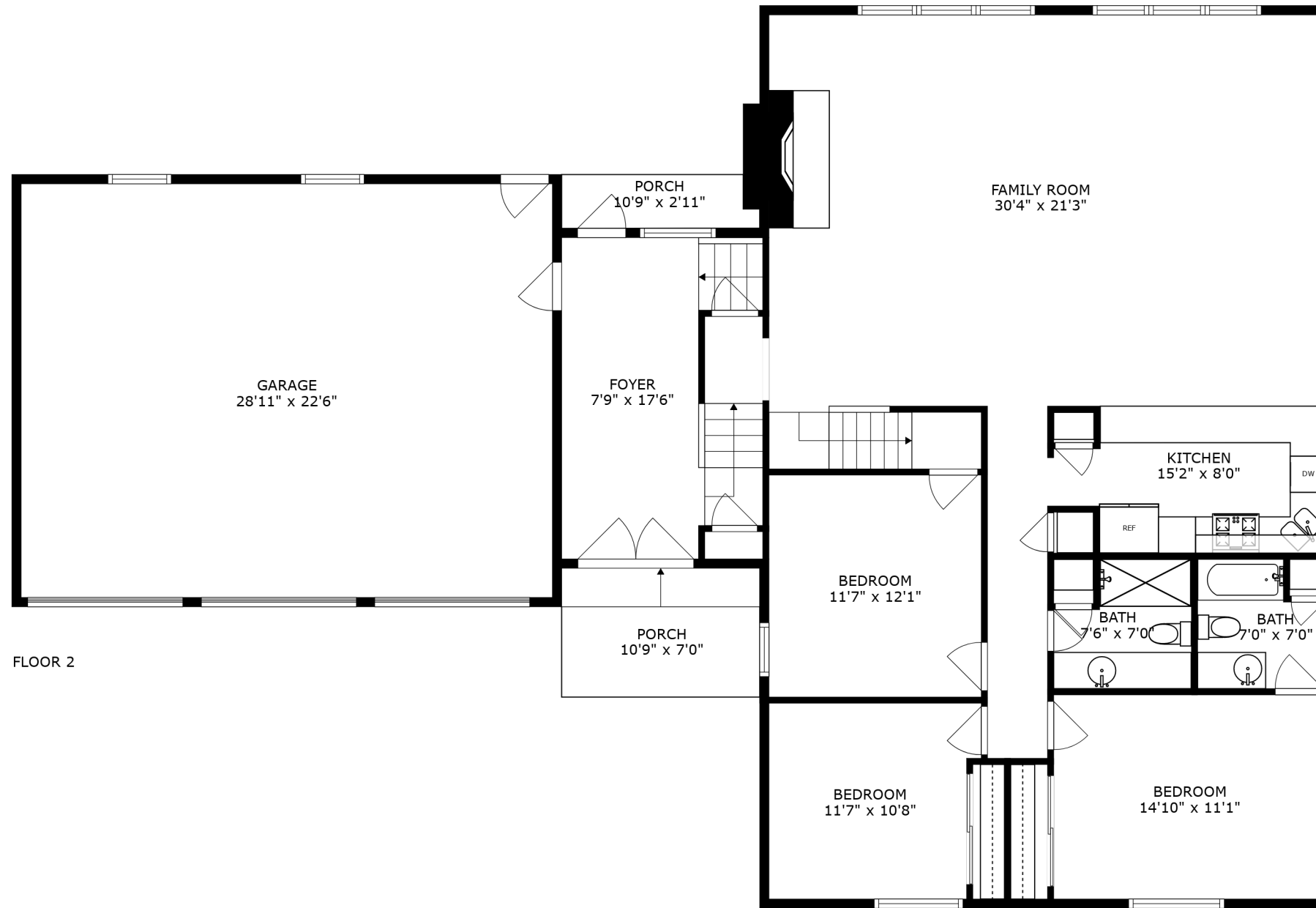
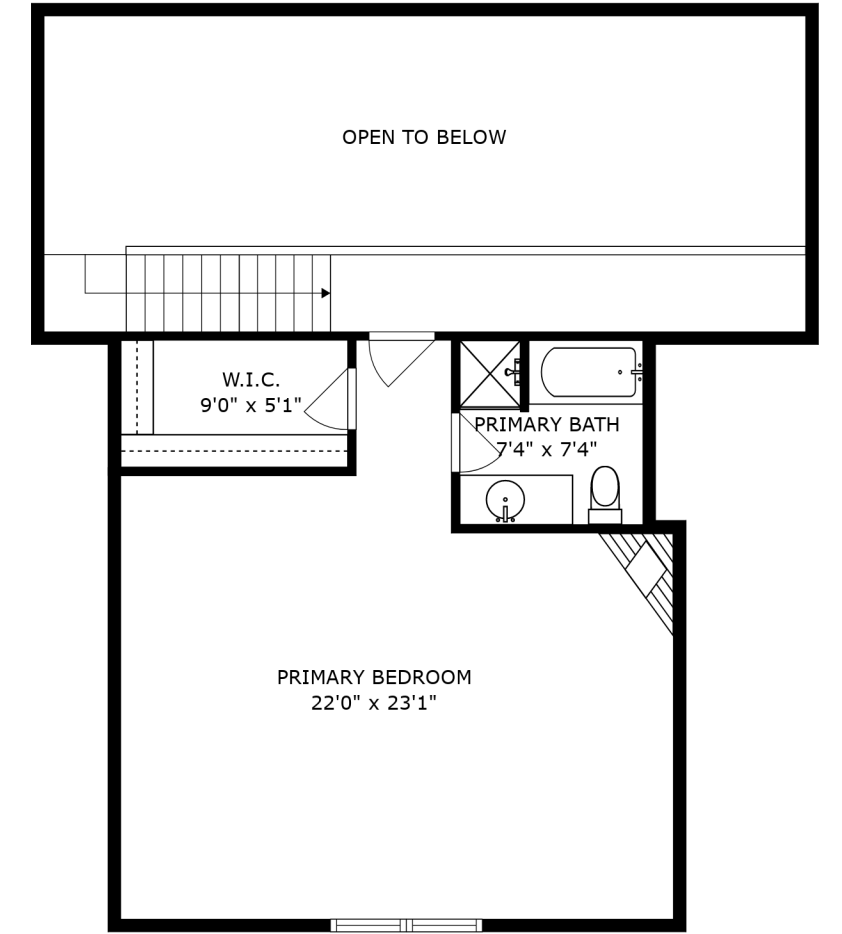


FLOOR 1

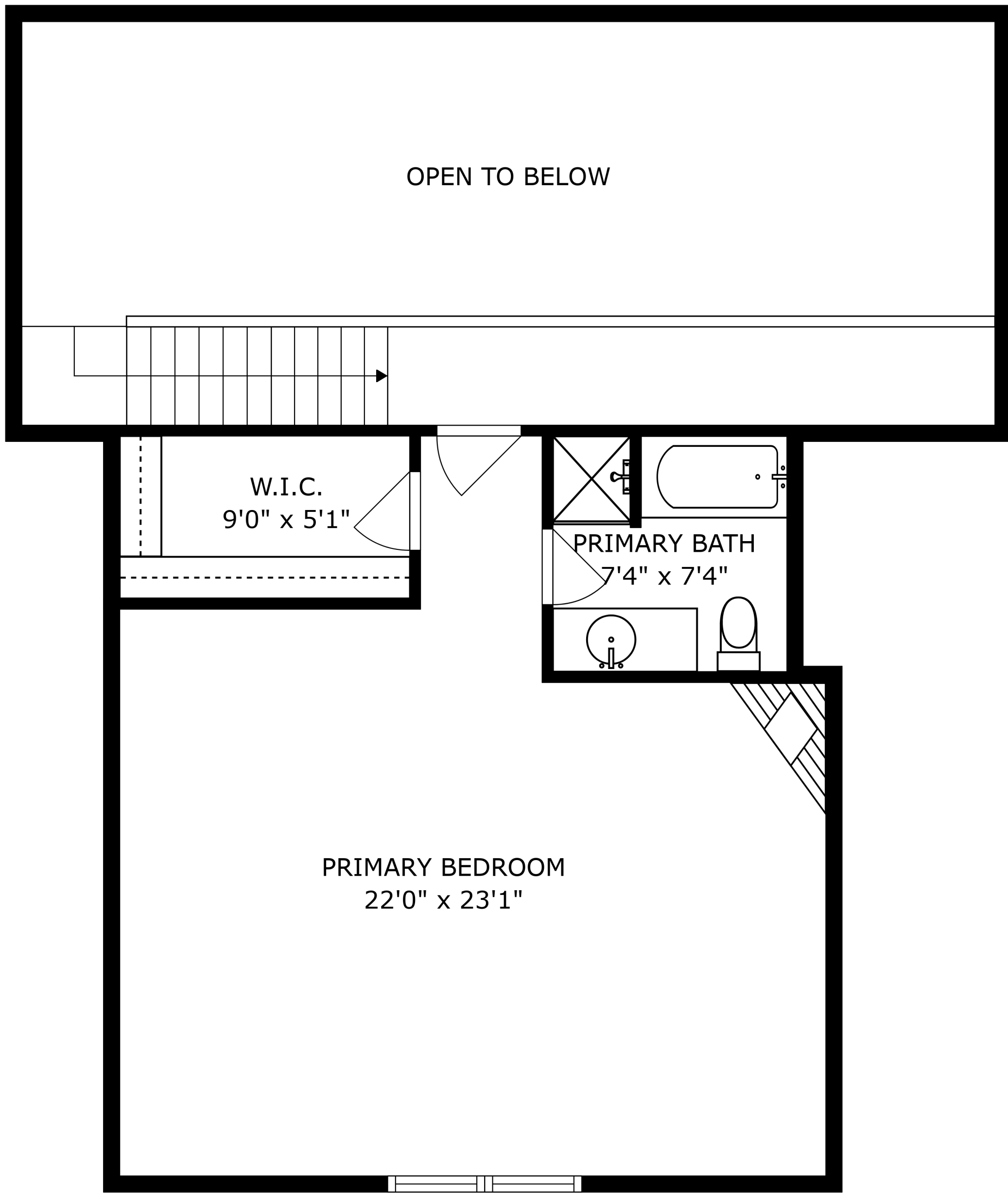


FLOOR 2



FLOOR 3

SIZES AND DIMENSIONS ARE APPROXIMATE, ACTUAL MAY VARY.



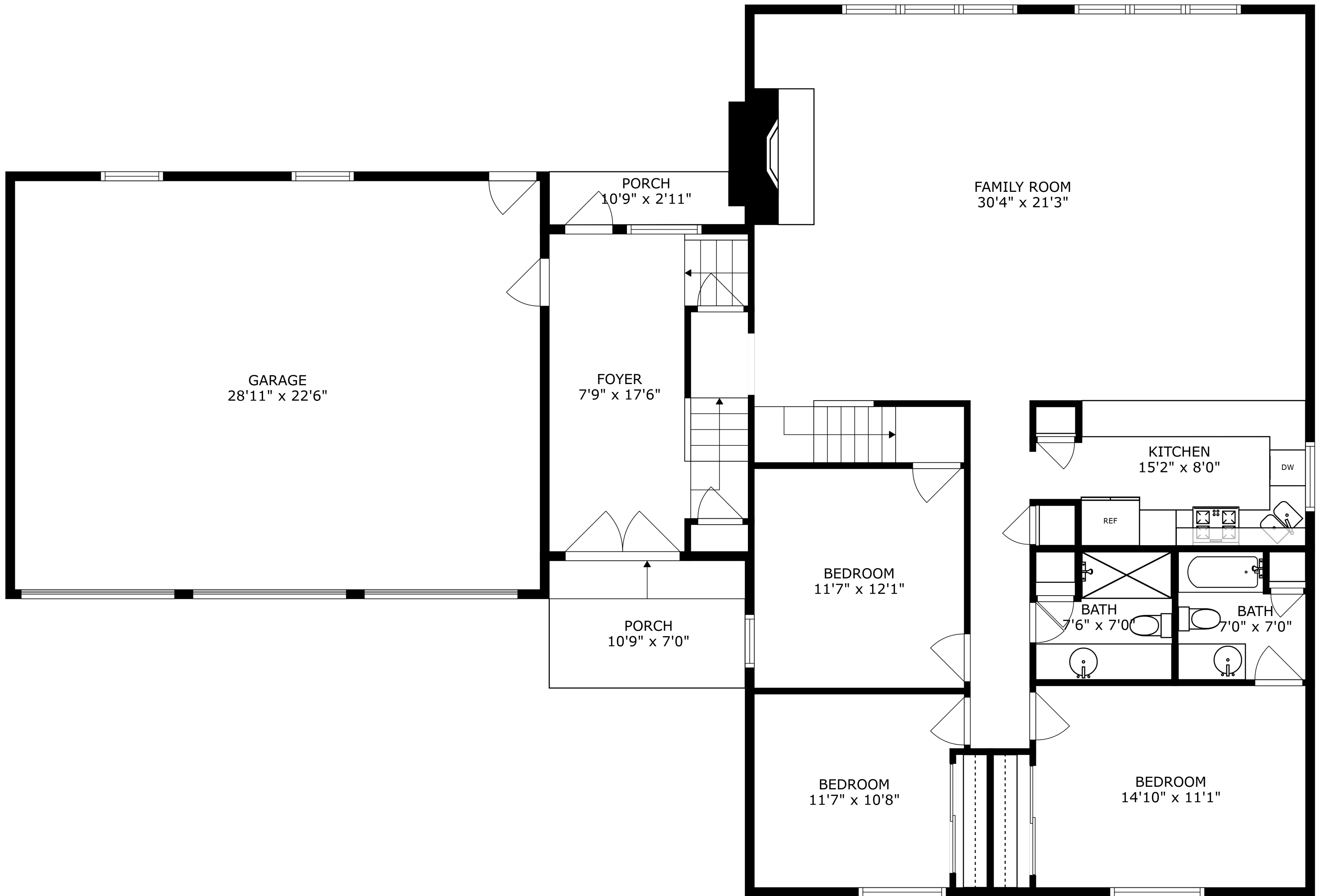
OPEN TO BELOW

W.I.C.  
9'0" x 5'1"

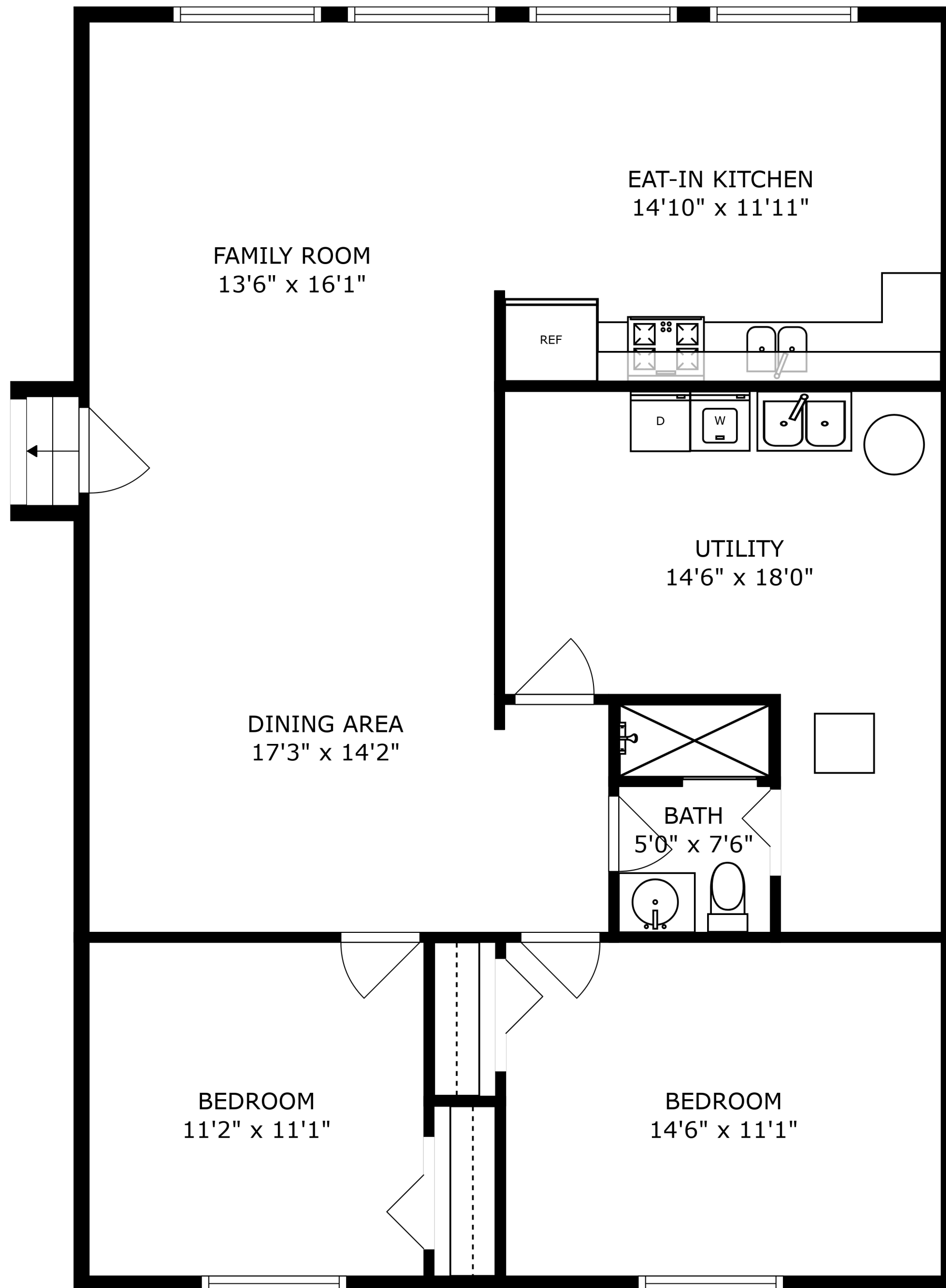
PRIMARY BATH  
7'4" x 7'4"

PRIMARY BEDROOM  
22'0" x 23'1"

SIZES AND DIMENSIONS ARE APPROXIMATE, ACTUAL MAY VARY.



SIZES AND DIMENSIONS ARE APPROXIMATE, ACTUAL MAY VARY.



SIZES AND DIMENSIONS ARE APPROXIMATE, ACTUAL MAY VARY.