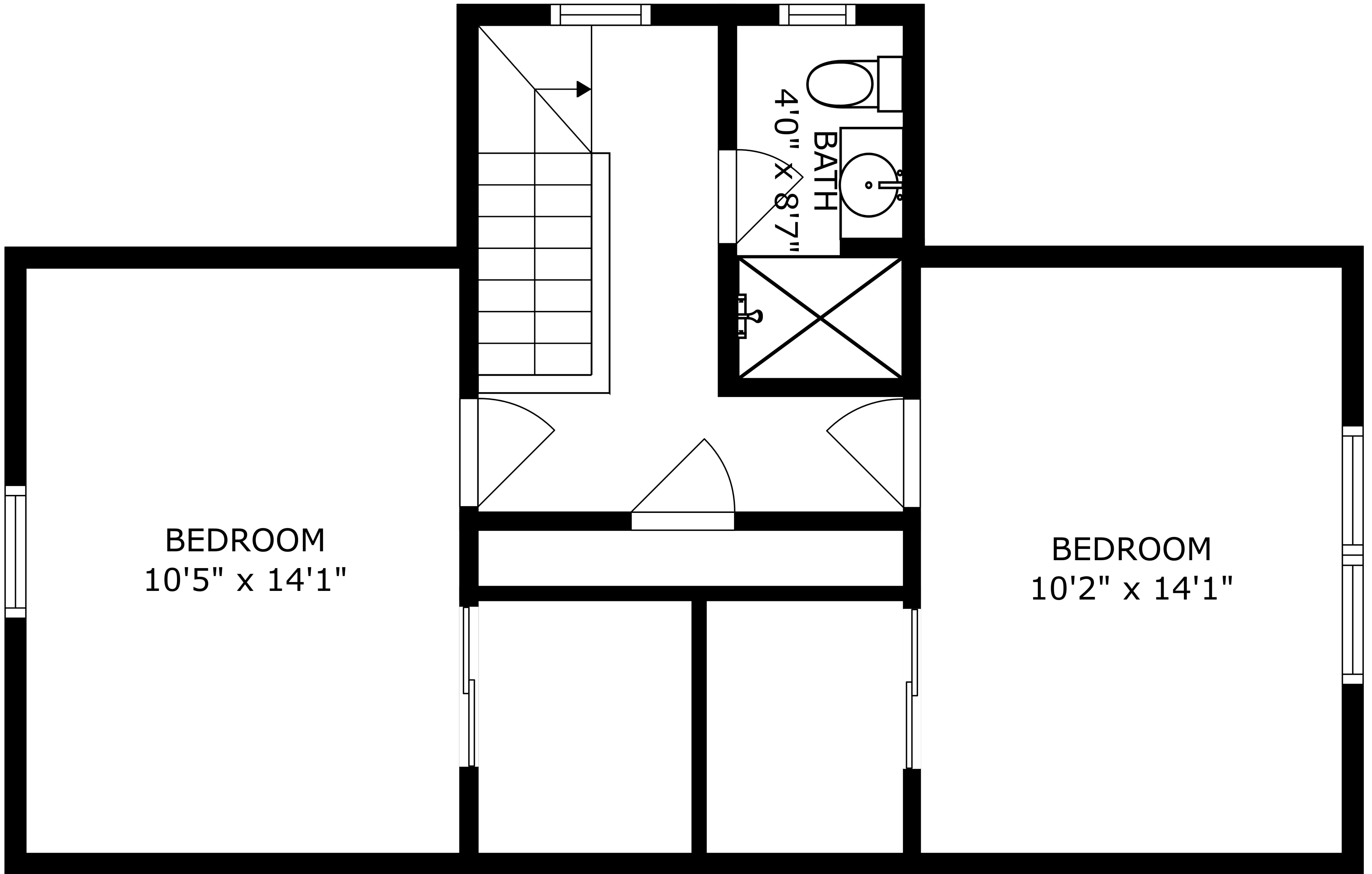


SIZES AND DIMENSIONS ARE APPROXIMATE, ACTUAL MAY VARY.

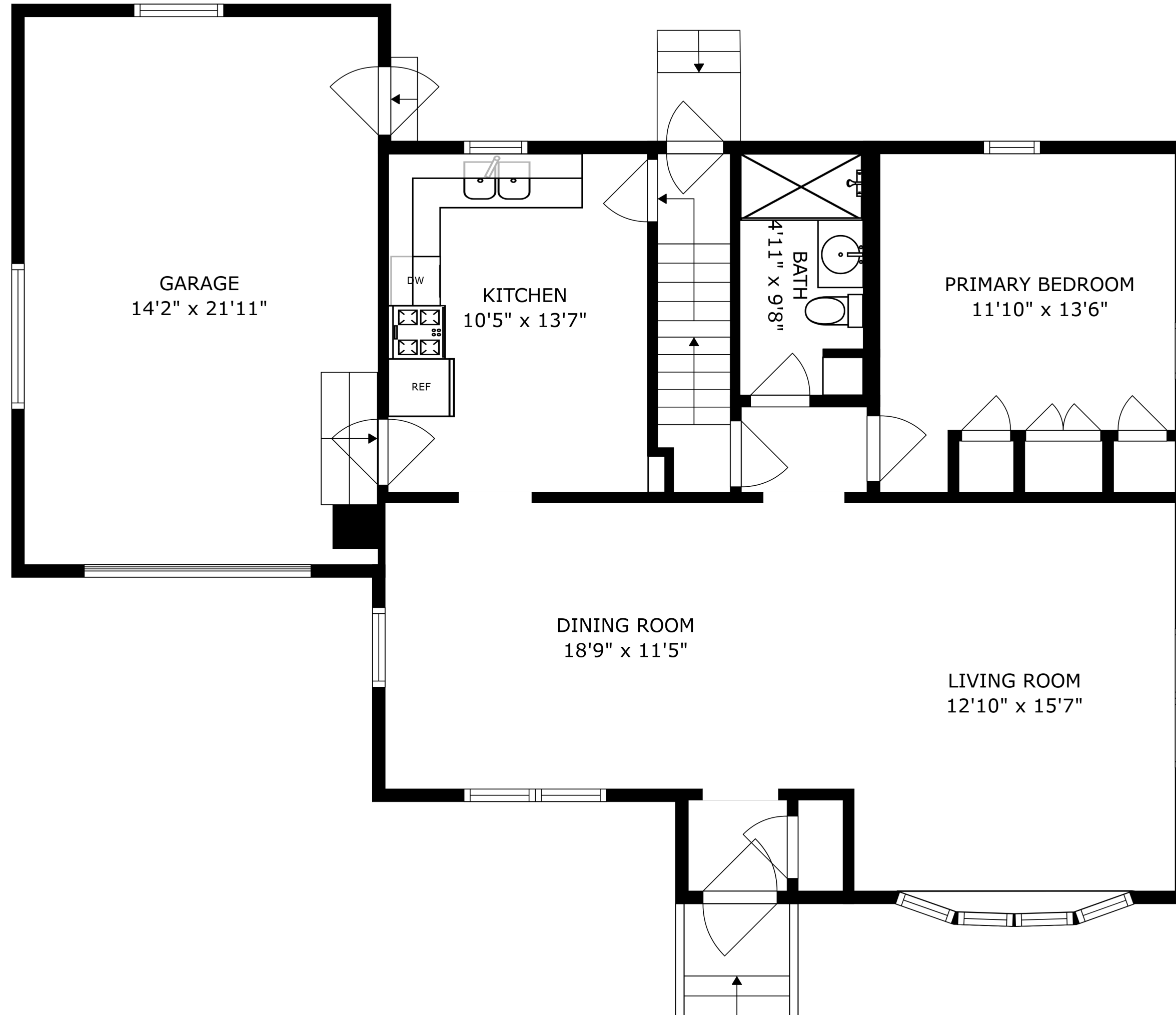


BEDROOM
10'5" x 14'1"

BEDROOM
10'2" x 14'1"

BATH
4'0" x 8'7"

PATIO
13'11" x 13'9"



GARAGE
14'2" x 21'11"

KITCHEN
10'5" x 13'7"

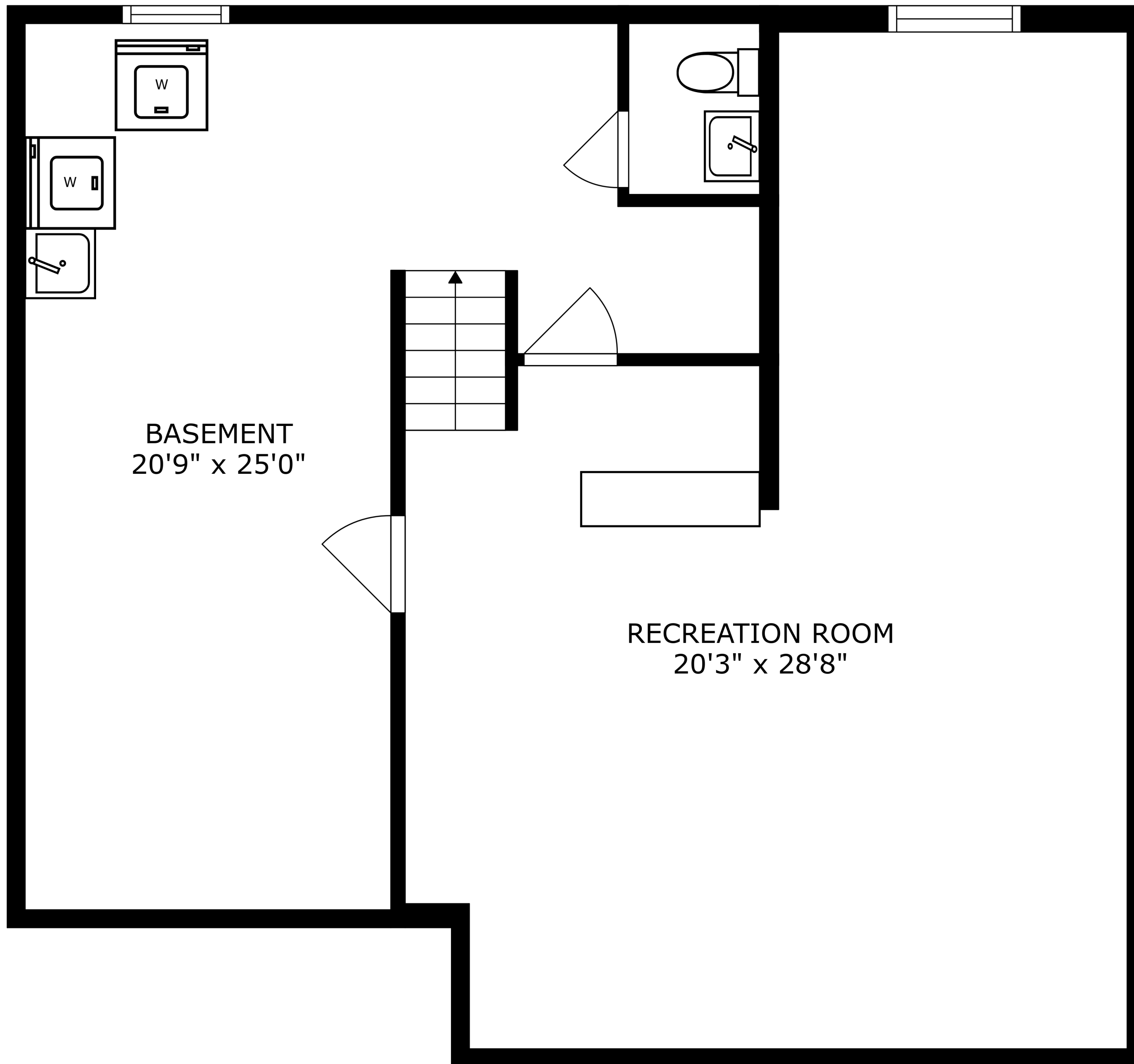
BATH
4'11" x 9'8"

PRIMARY BEDROOM
11'10" x 13'6"

DINING ROOM
18'9" x 11'5"

LIVING ROOM
12'10" x 15'7"

SIZES AND DIMENSIONS ARE APPROXIMATE, ACTUAL MAY VARY.



BASEMENT
20'9" x 25'0"

RECREATION ROOM
20'3" x 28'8"