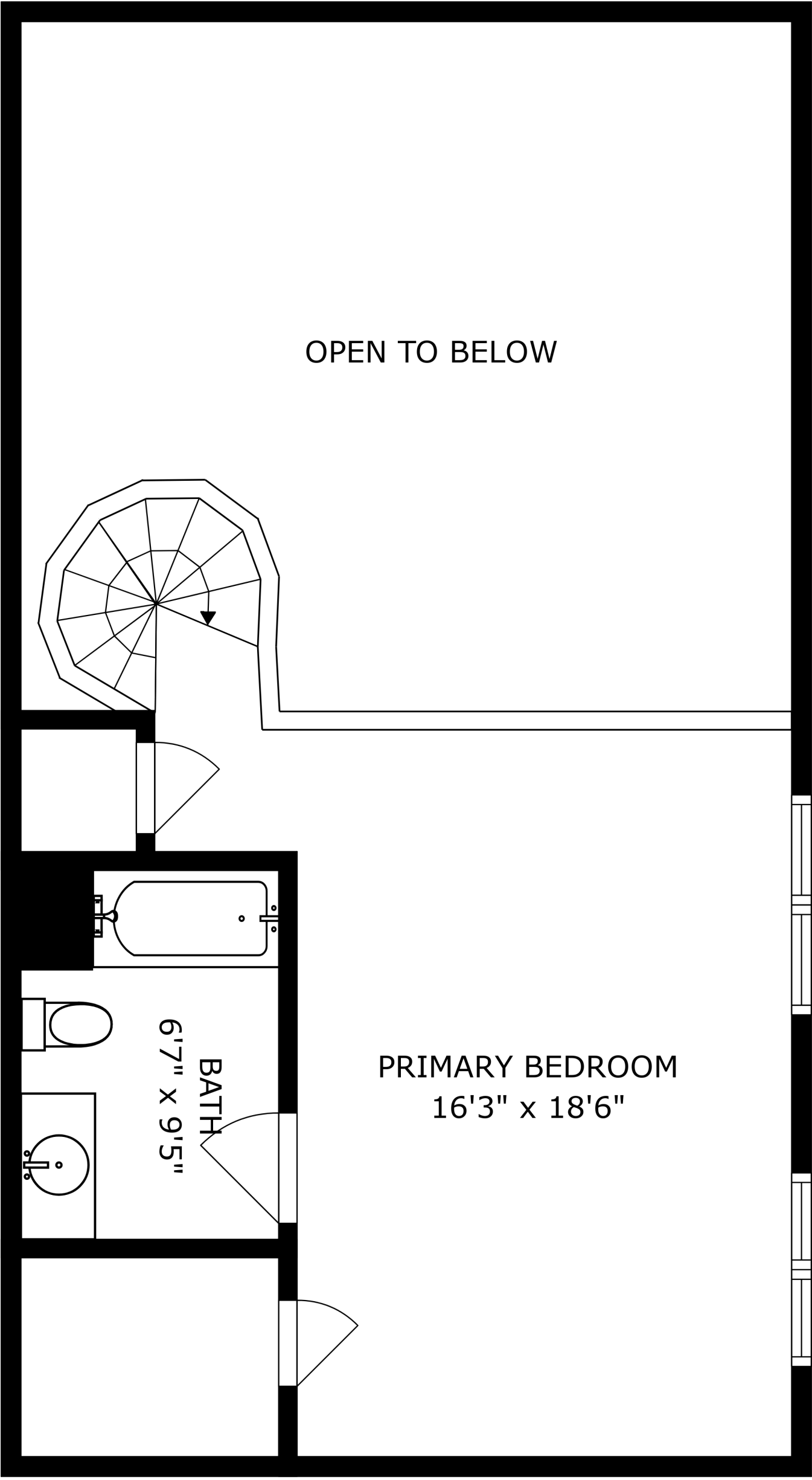


FLOOR 1

FLOOR 2

FLOOR 3

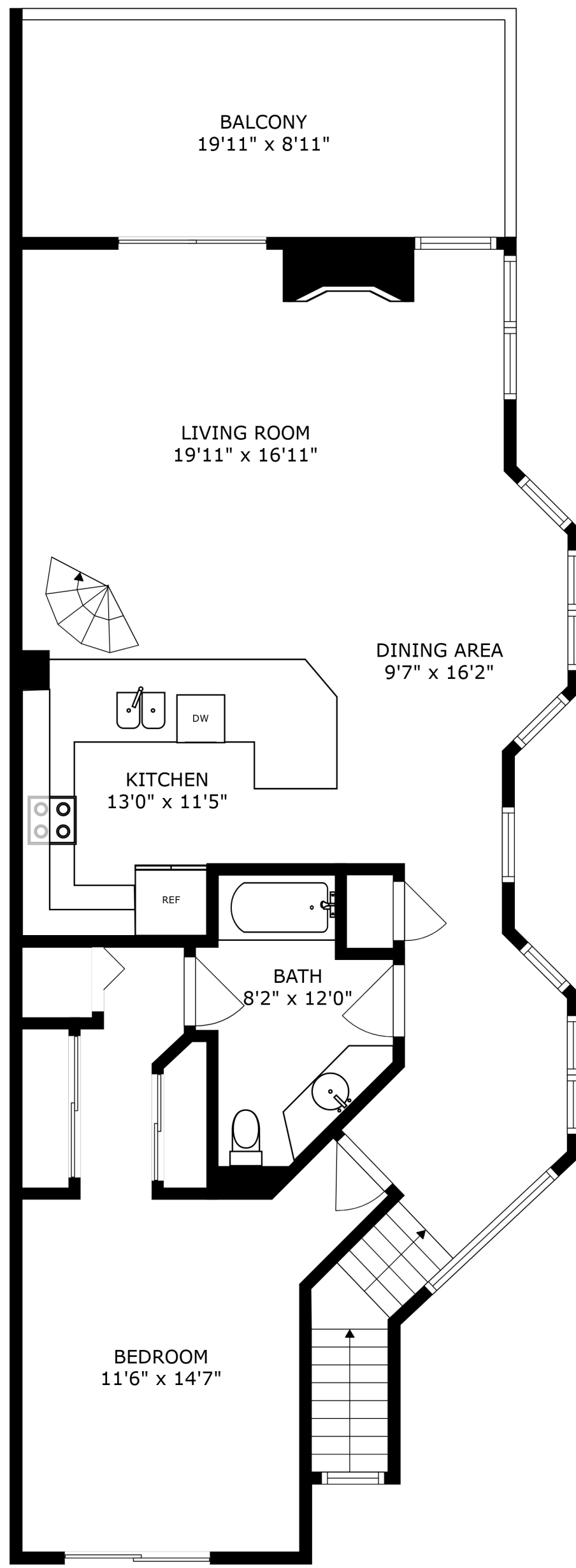
SIZES AND DIMENSIONS ARE APPROXIMATE, ACTUAL MAY VARY.



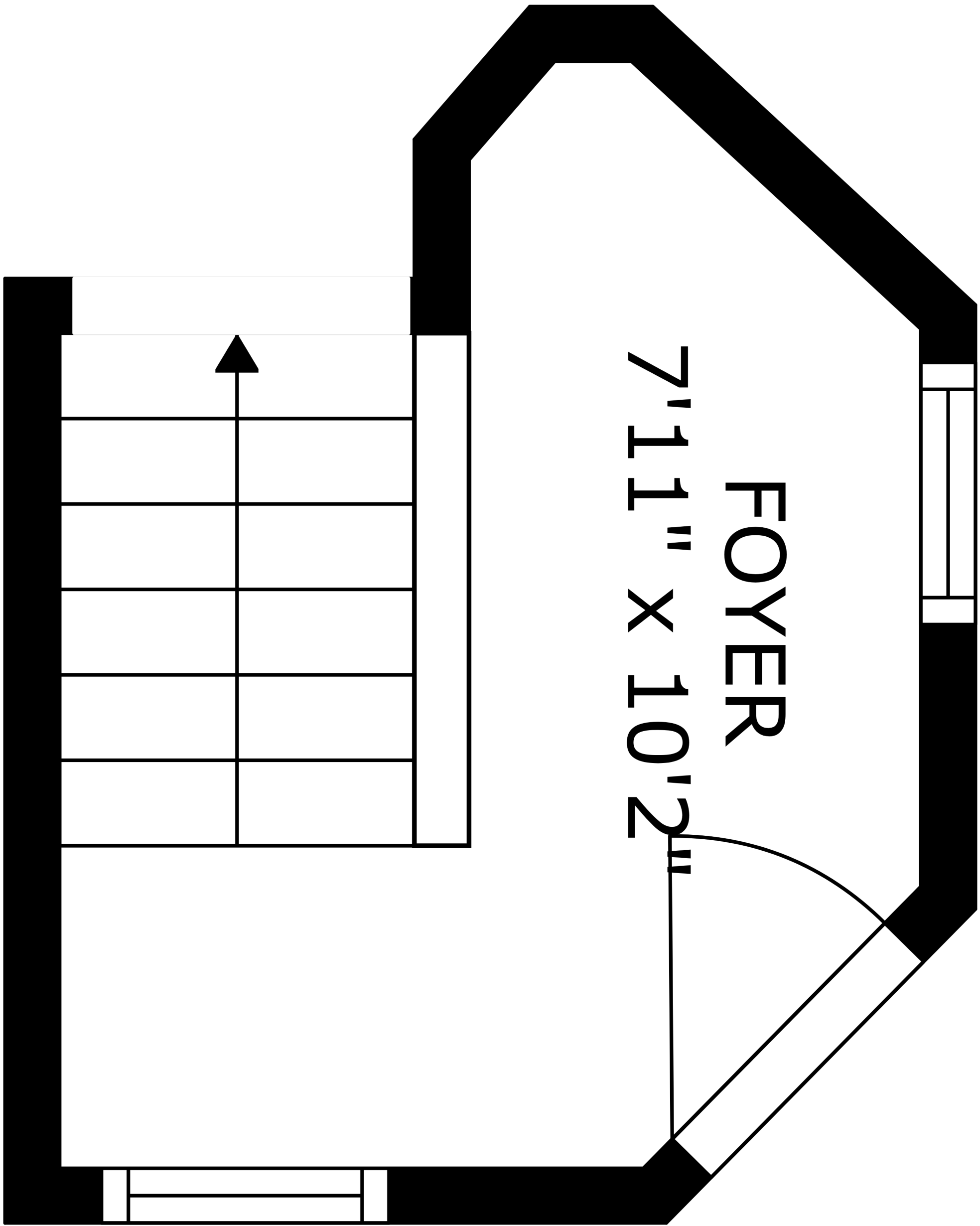
OPEN TO BELOW

PRIMARY BEDROOM
16'3" x 18'6"

BATH
6'7" x 9'5"



SIZES AND DIMENSIONS ARE APPROXIMATE, ACTUAL MAY VARY.



FOYER
7'11" X 10'2"