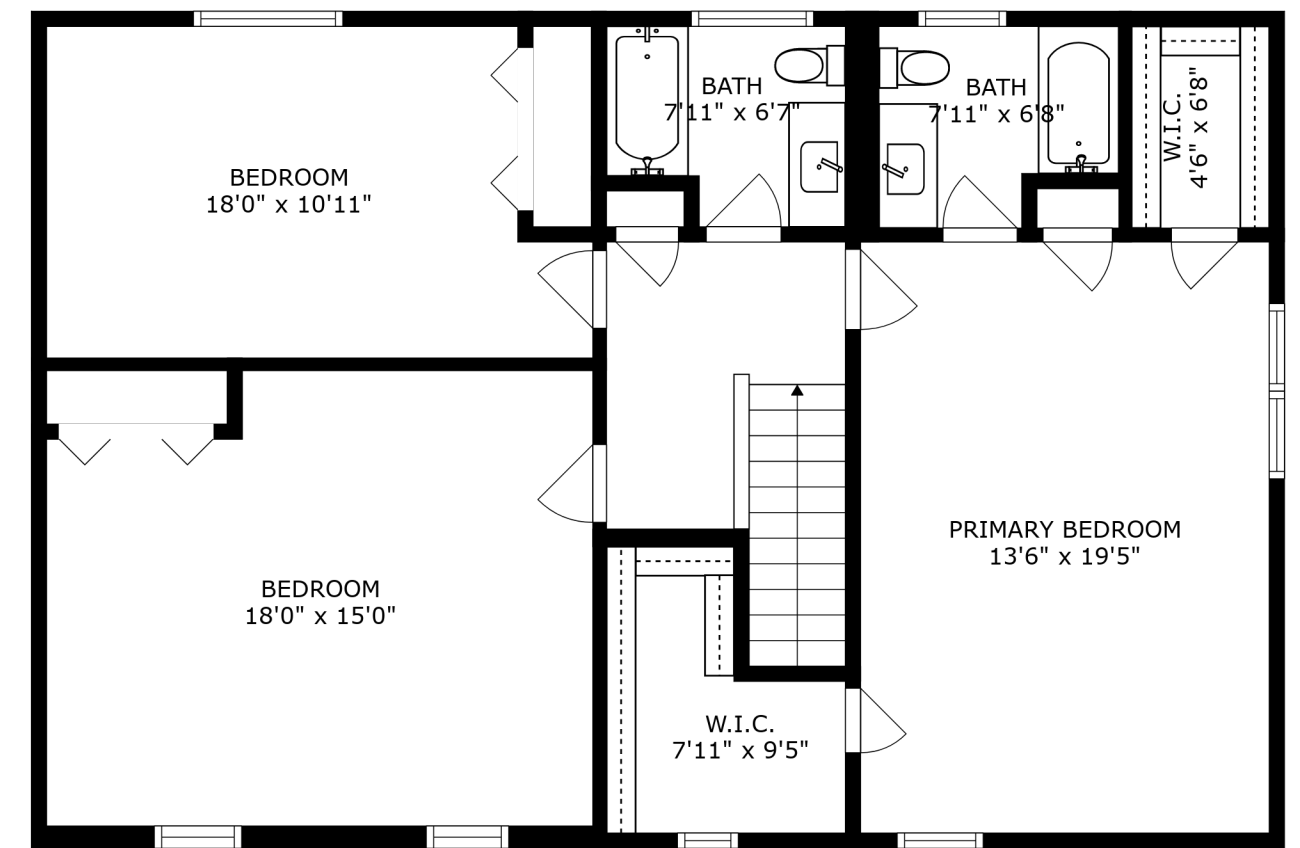
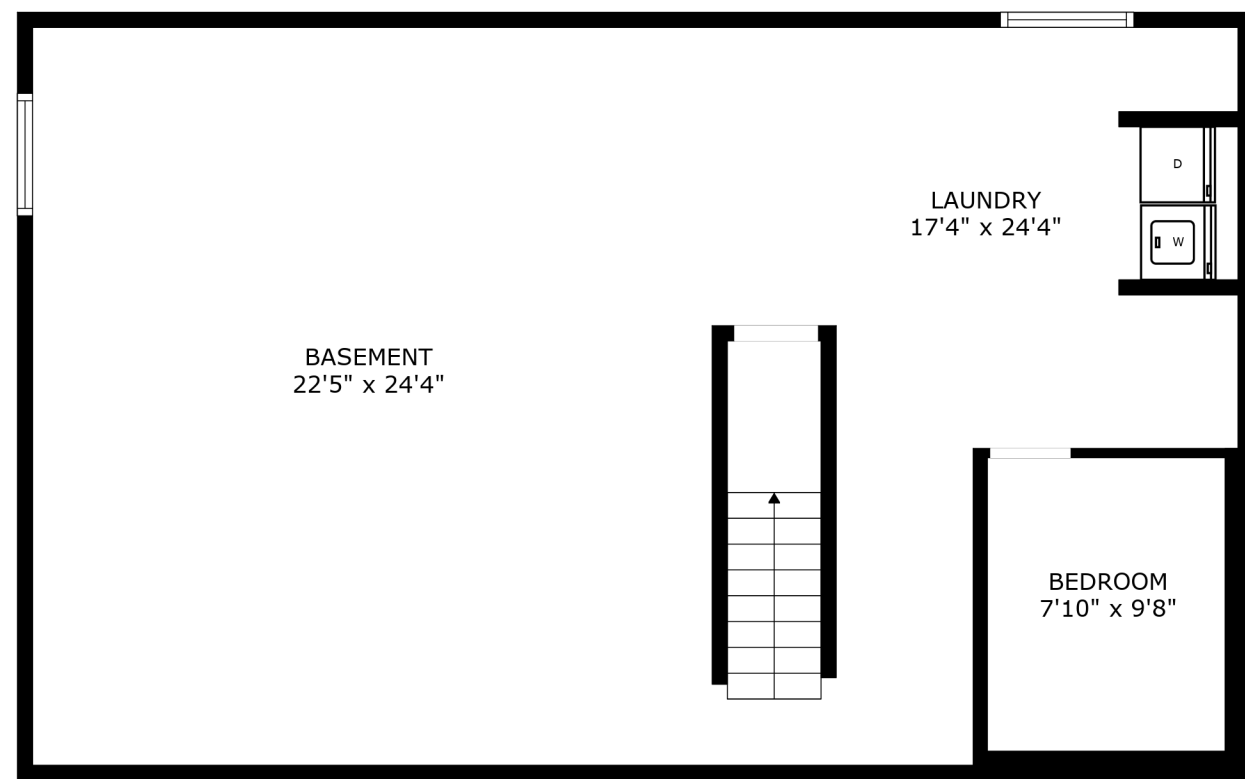


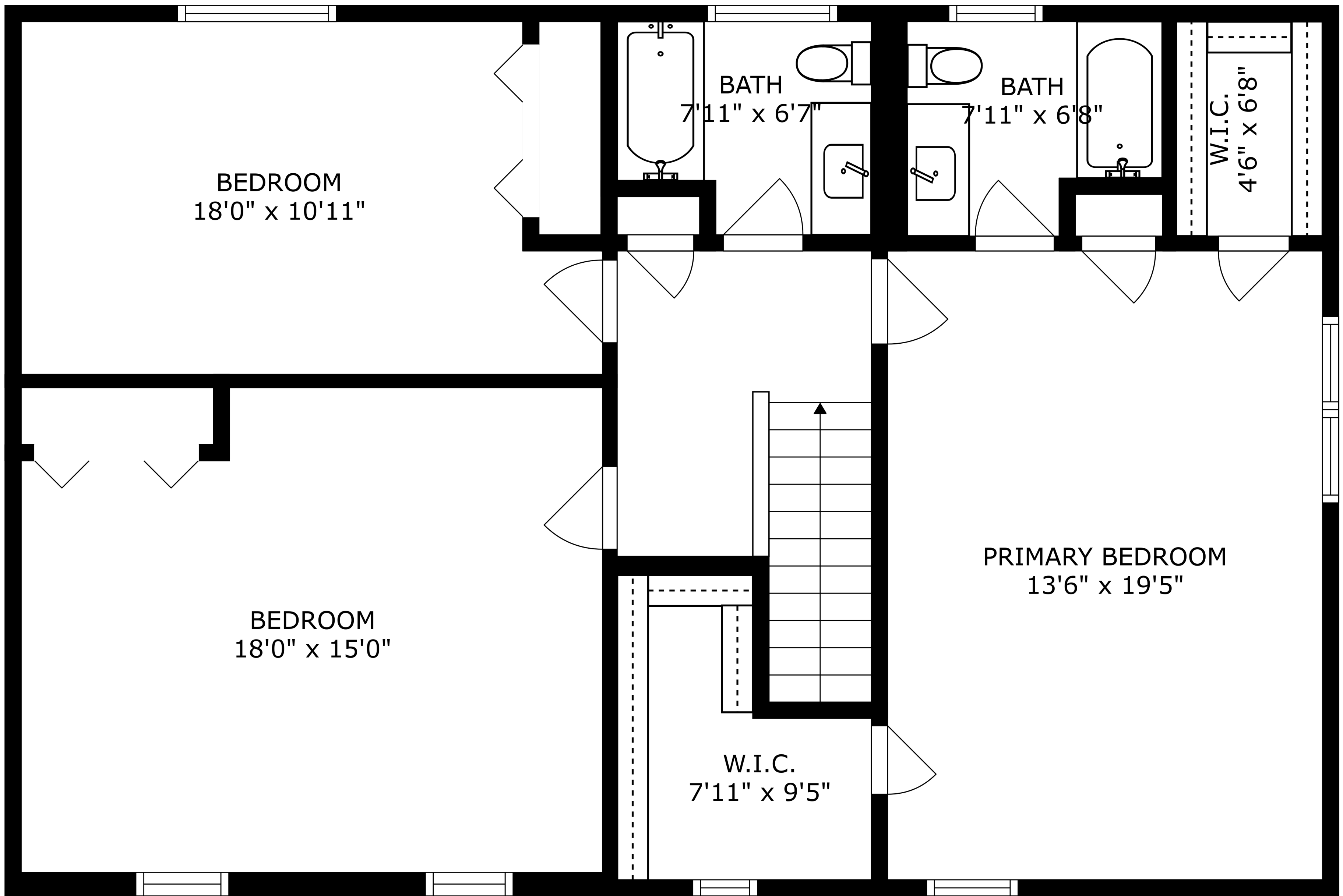
FLOOR 2



FLOOR 3



FLOOR 1



BEDROOM
18'0" x 10'11"

BATH
7'11" x 6'7"

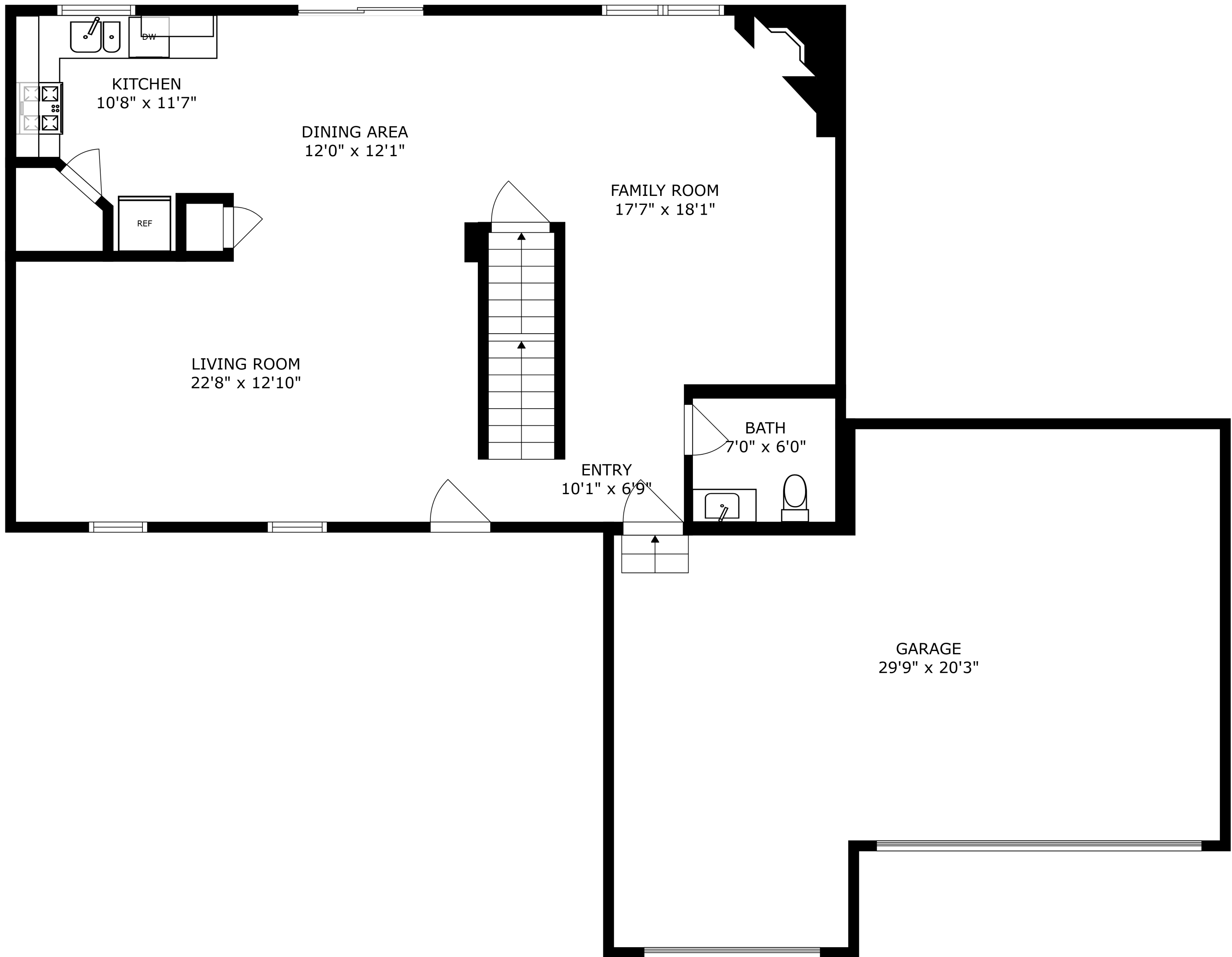
BATH
7'11" x 6'8"

W.I.C.
4'6" x 6'8"

BEDROOM
18'0" x 15'0"

PRIMARY BEDROOM
13'6" x 19'5"

W.I.C.
7'11" x 9'5"



SIZES AND DIMENSIONS ARE APPROXIMATE, ACTUAL MAY VARY.

BASEMENT
22'5" x 24'4"

LAUNDRY
17'4" x 24'4"

BEDROOM
7'10" x 9'8"

D

W

