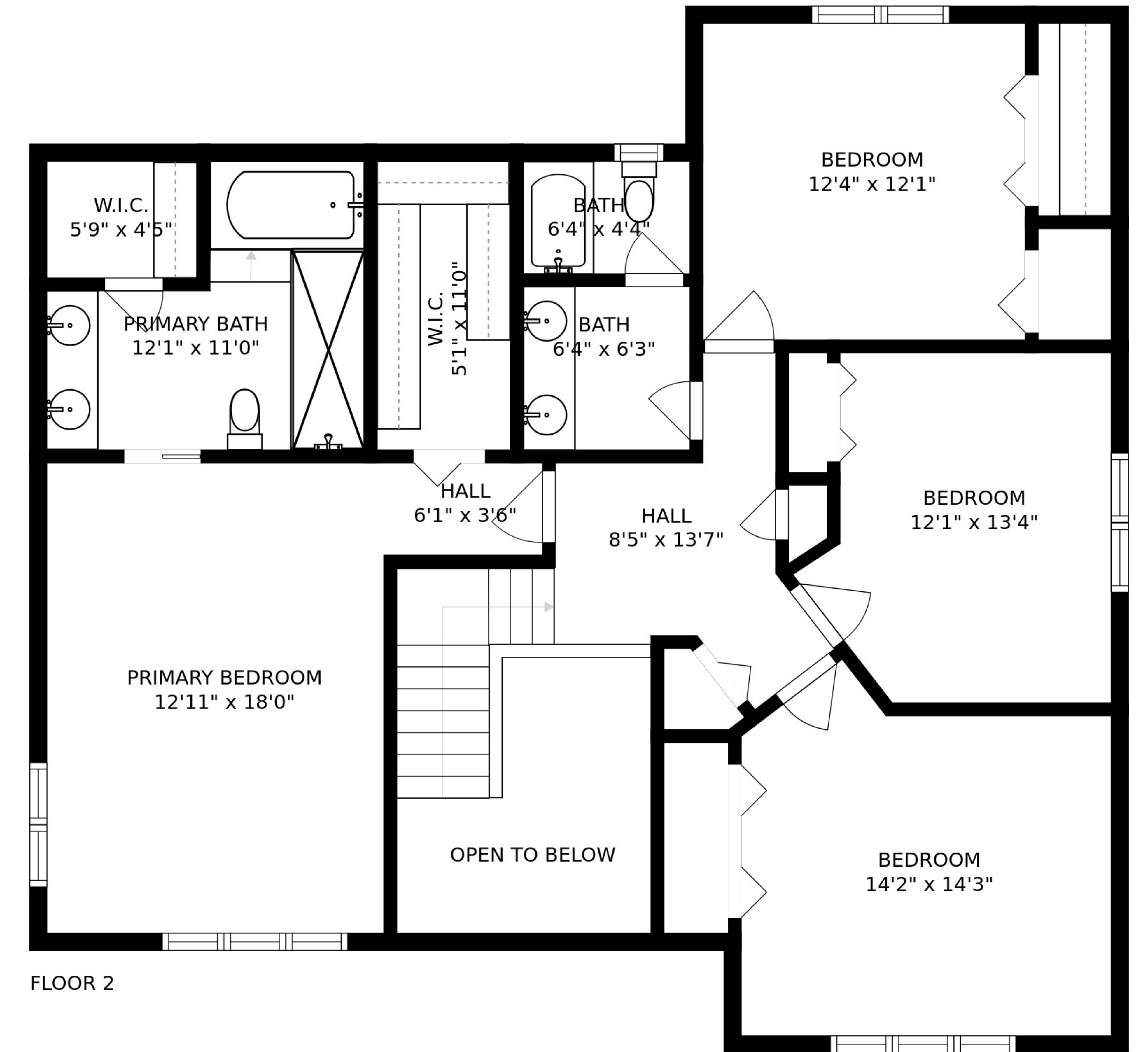
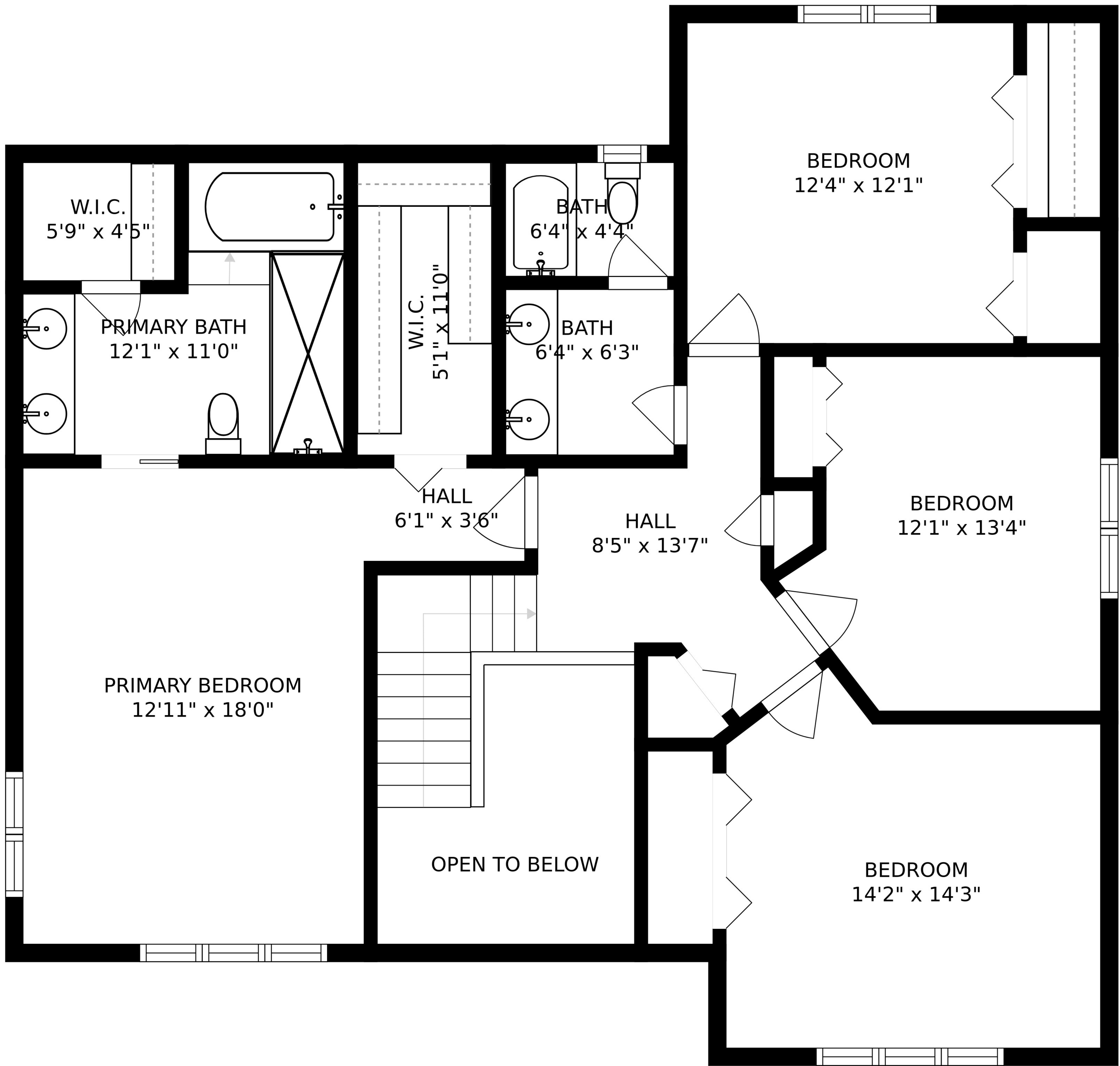


FLOOR 1



FLOOR 2



W.I.C.
5'9" x 4'5"

PRIMARY BATH
12'1" x 11'0"

W.I.C.
5'1" x 11'0"

BATH
6'4" x 4'4"

BATH
6'4" x 6'3"

BEDROOM
12'4" x 12'1"

HALL
6'1" x 3'6"

HALL
8'5" x 13'7"

BEDROOM
12'1" x 13'4"

PRIMARY BEDROOM
12'11" x 18'0"

OPEN TO BELOW

BEDROOM
14'2" x 14'3"

