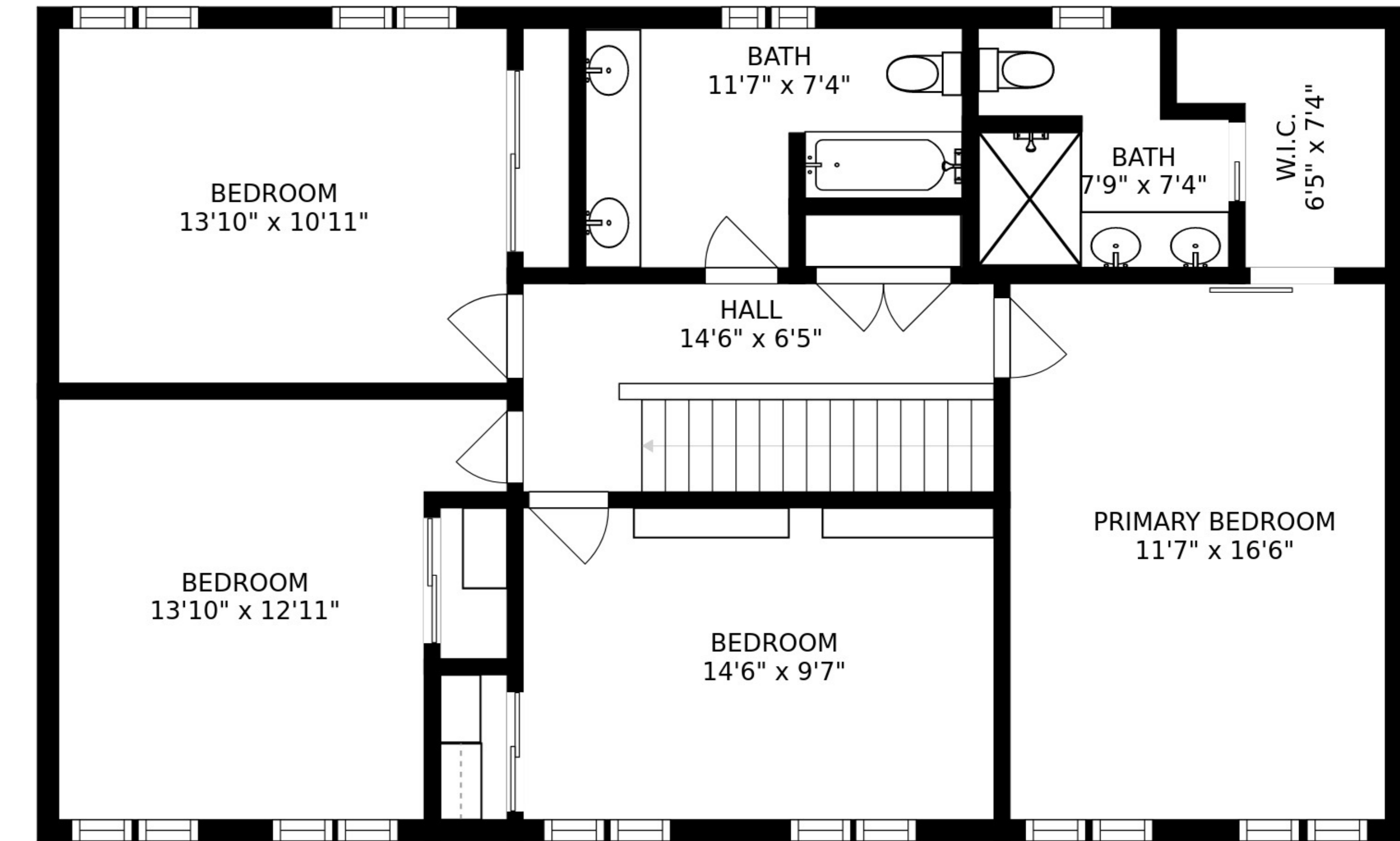
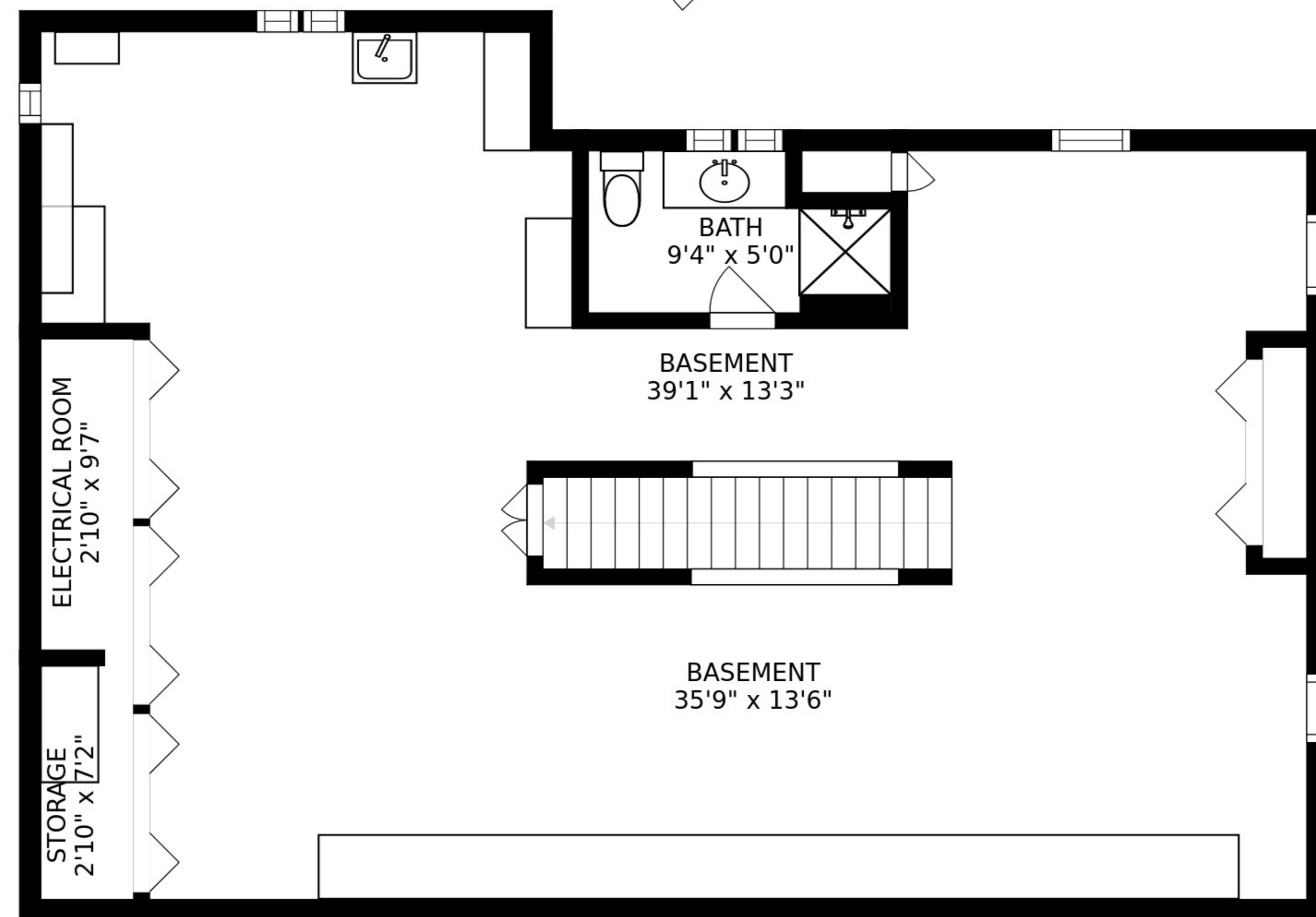


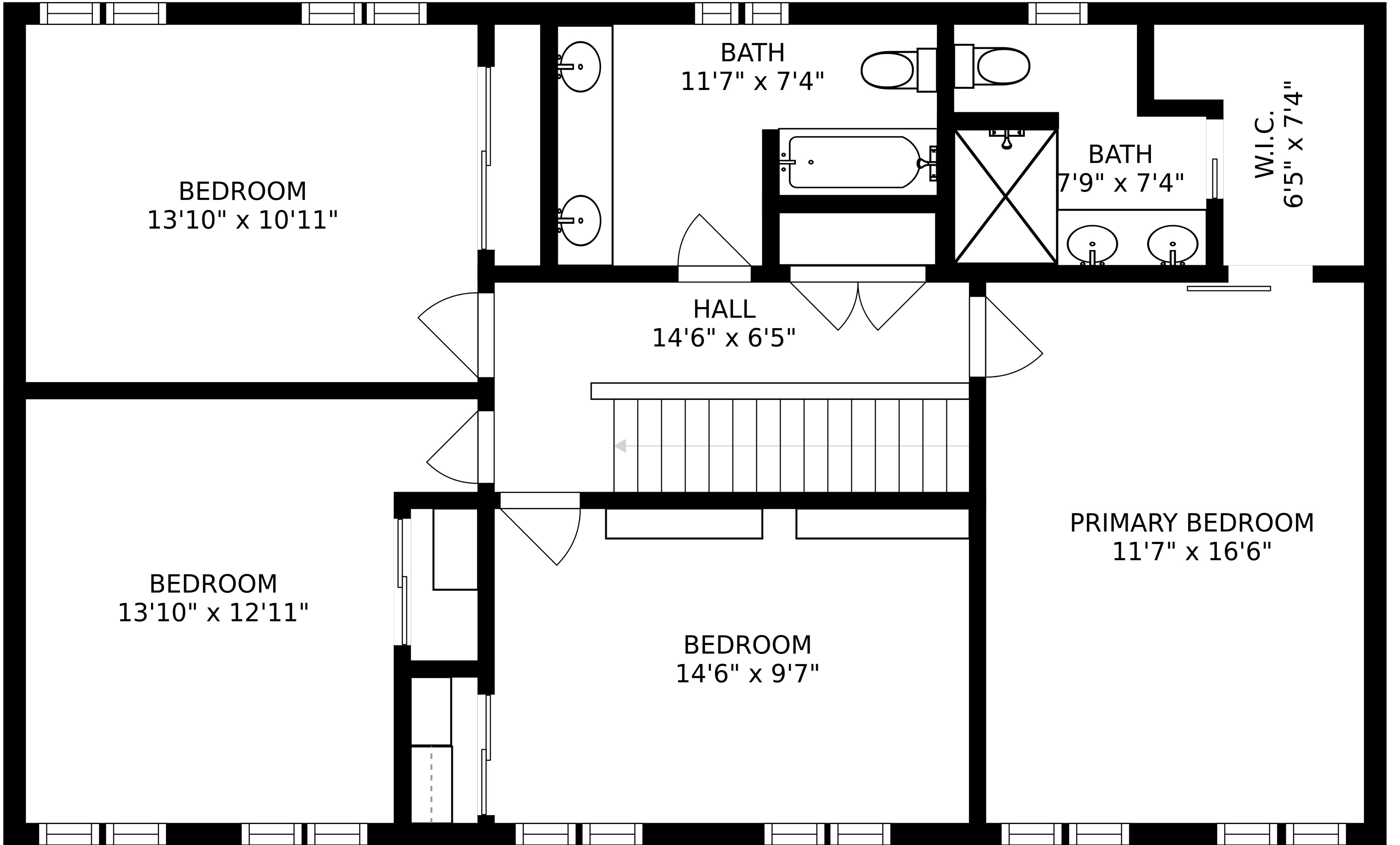
FLOOR 2



FLOOR 3



FLOOR 1



BEDROOM
13'10" x 10'11"

BATH
11'7" x 7'4"

BATH
7'9" x 7'4"

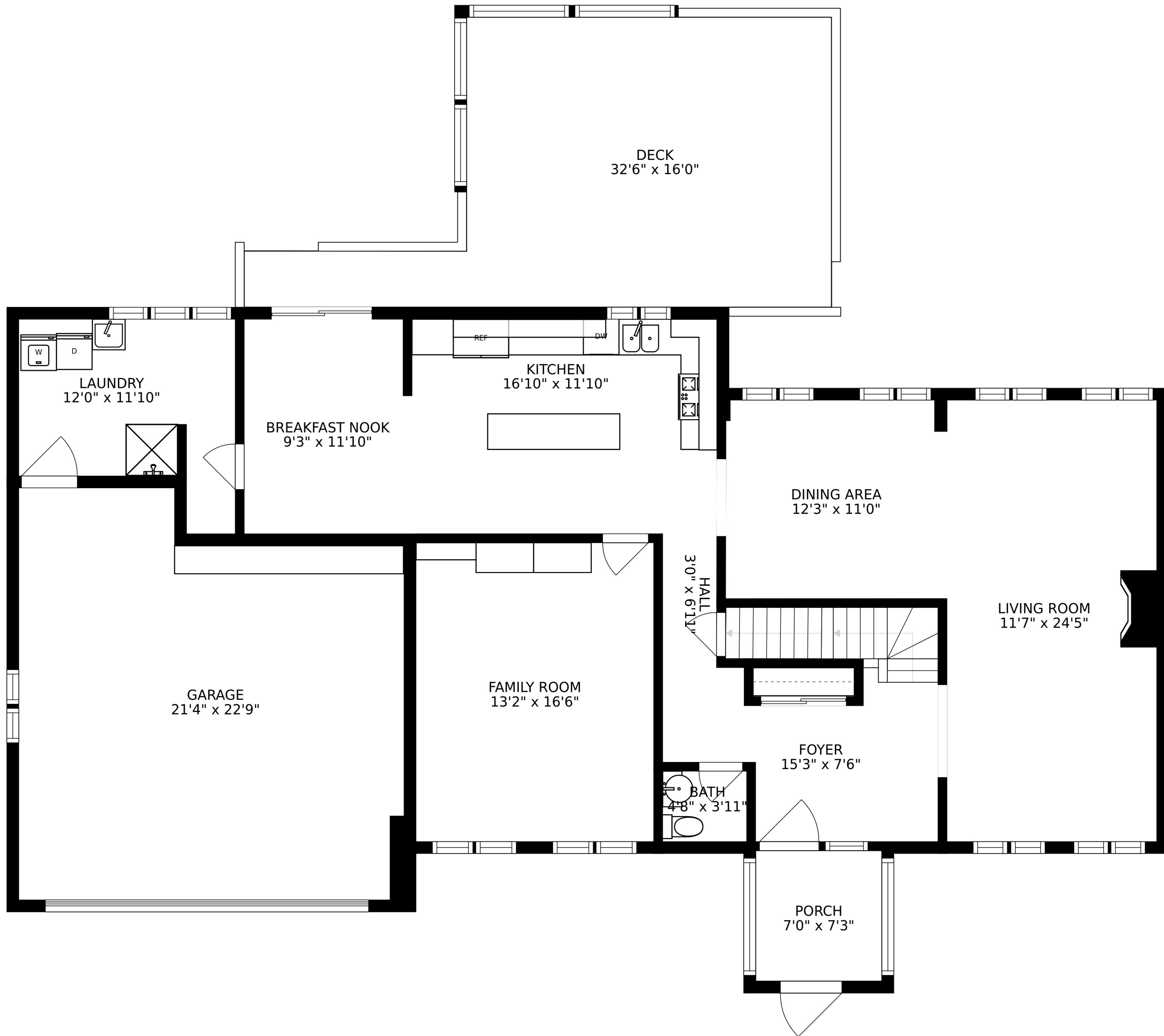
W.I.C.
6'5" x 7'4"

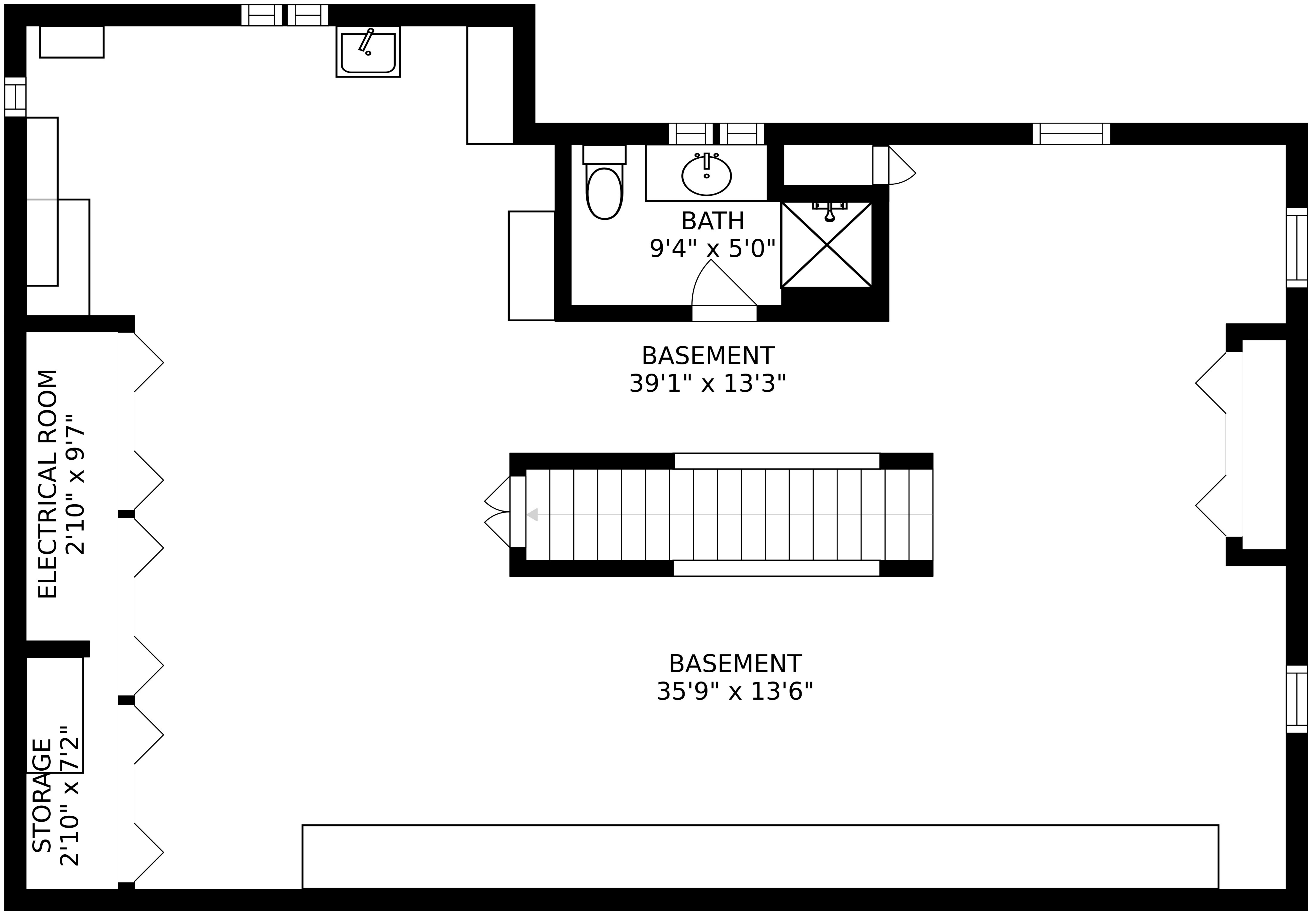
HALL
14'6" x 6'5"

BEDROOM
13'10" x 12'11"

BEDROOM
14'6" x 9'7"

PRIMARY BEDROOM
11'7" x 16'6"





ELECTRICAL ROOM
2'10" x 9'7"

STORAGE
2'10" x 7'2"

BASEMENT
39'1" x 13'3"

BASEMENT
35'9" x 13'6"

BATH
9'4" x 5'0"