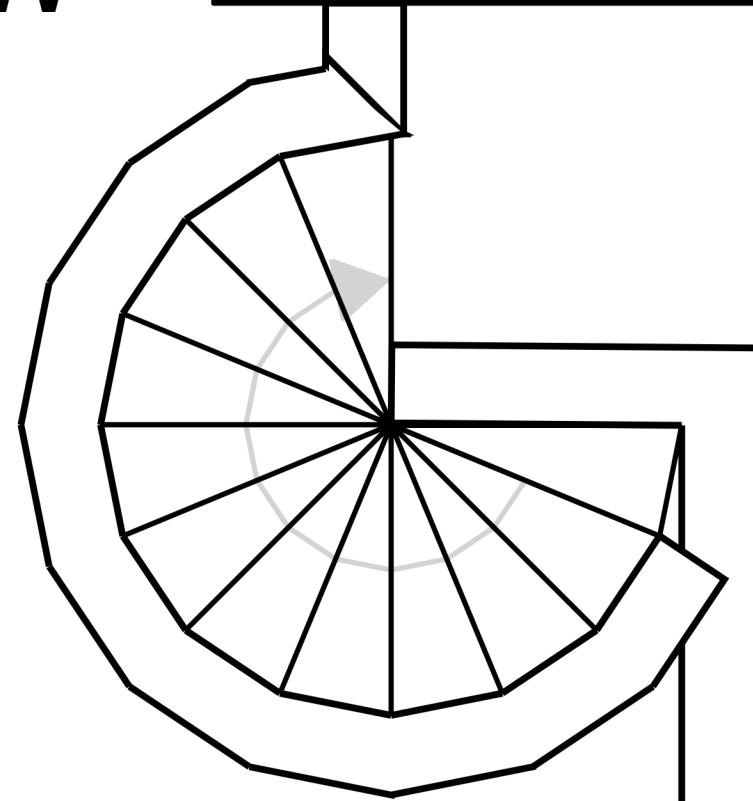
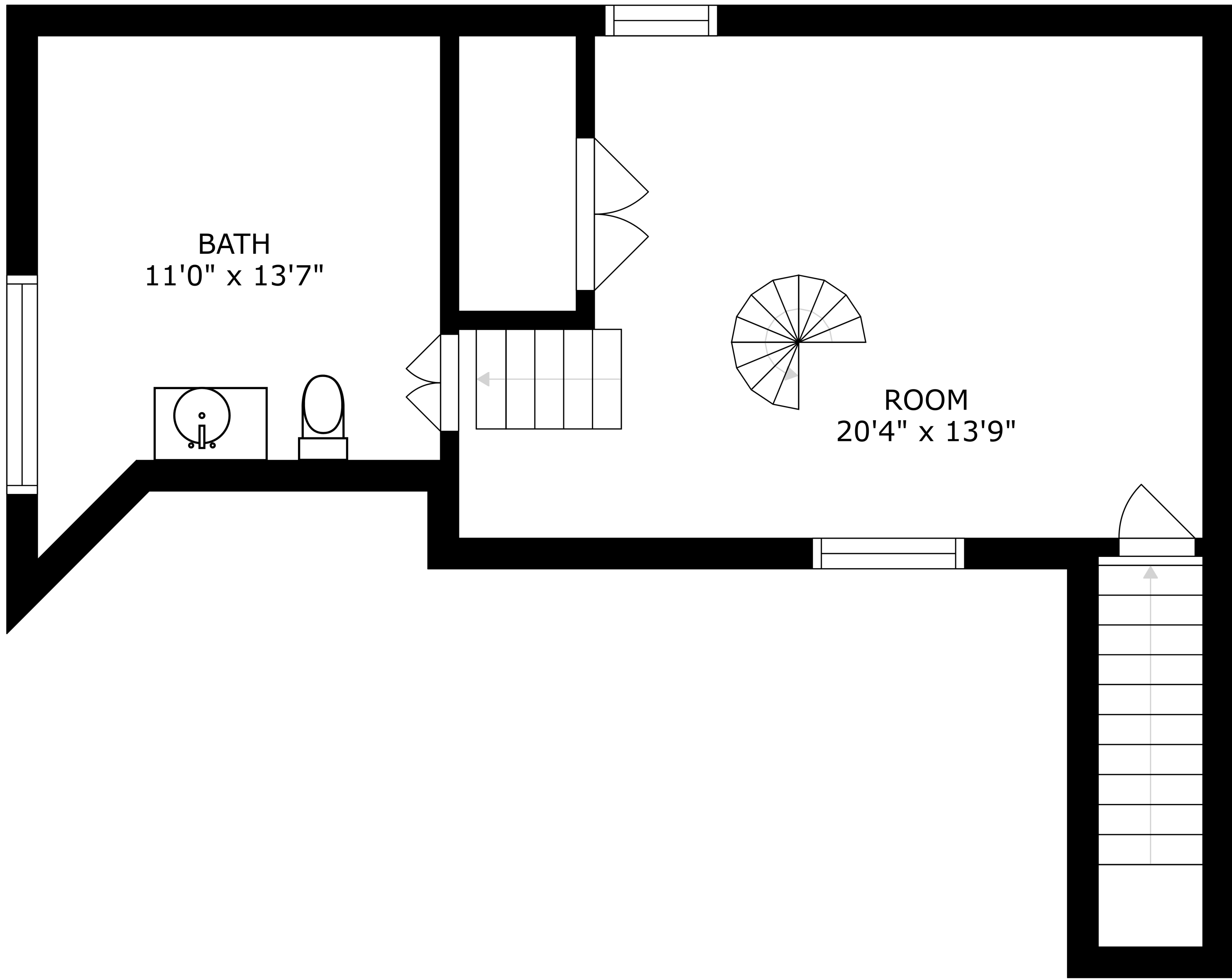


SIZES AND DIMENSIONS ARE APPROXIMATE, ACTUAL MAY VARY.

OPEN TO BELOW



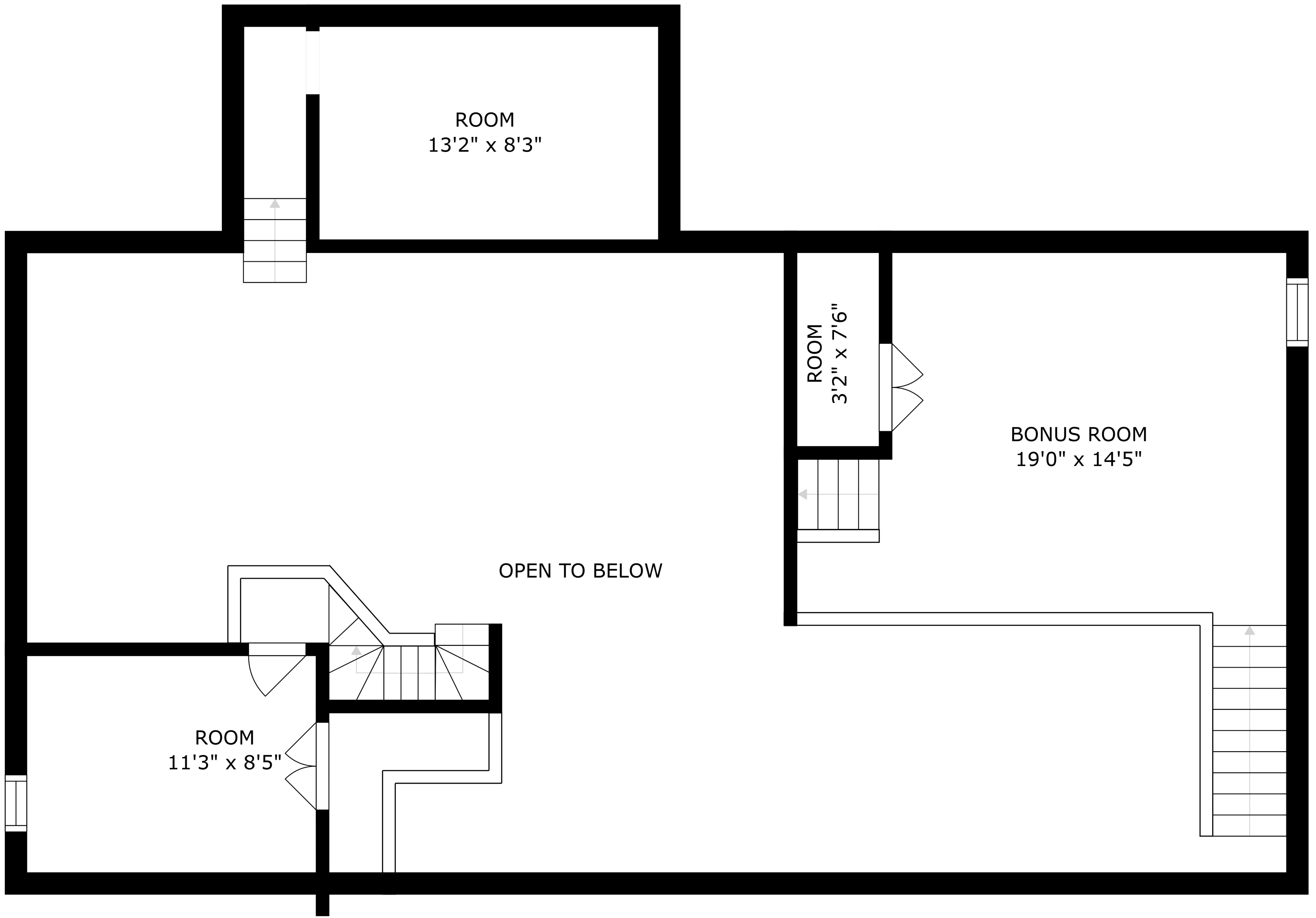
BEDROOM
11'0" x 8'0"



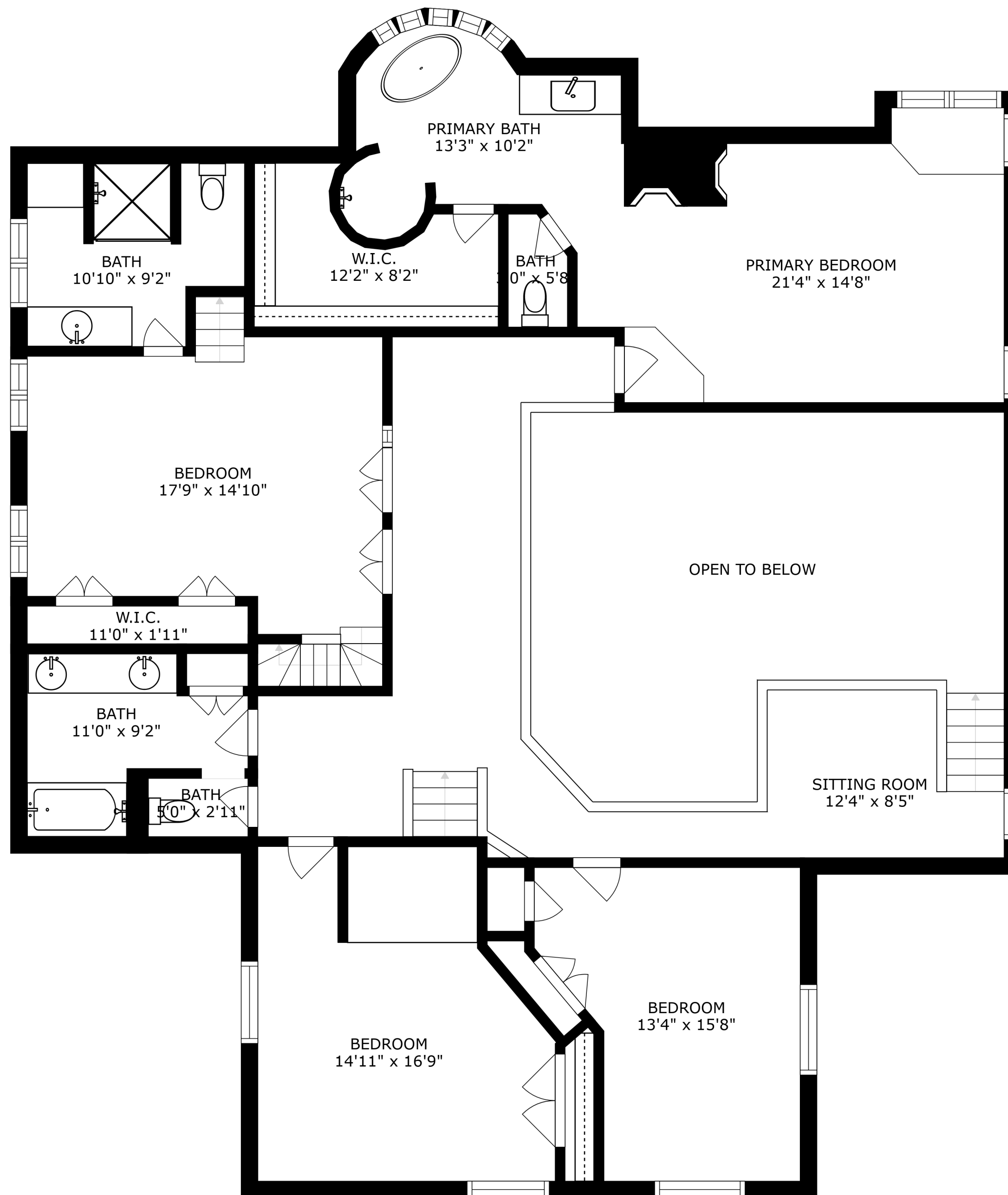
BATH
11'0" x 13'7"

ROOM
20'4" x 13'9"

SIZES AND DIMENSIONS ARE APPROXIMATE, ACTUAL MAY VARY.



SIZES AND DIMENSIONS ARE APPROXIMATE, ACTUAL MAY VARY.

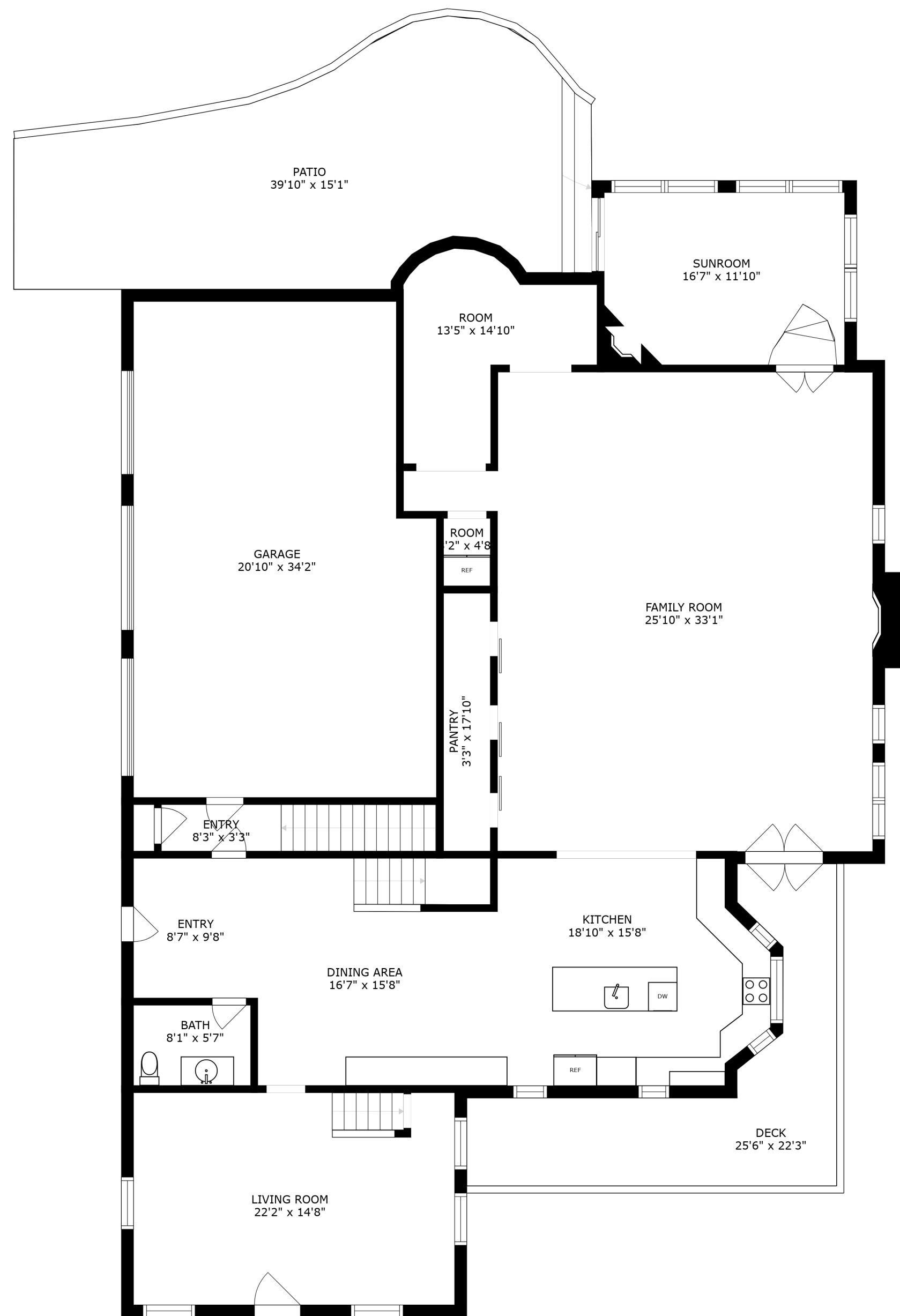


SIZES AND DIMENSIONS ARE APPROXIMATE, ACTUAL MAY VARY.

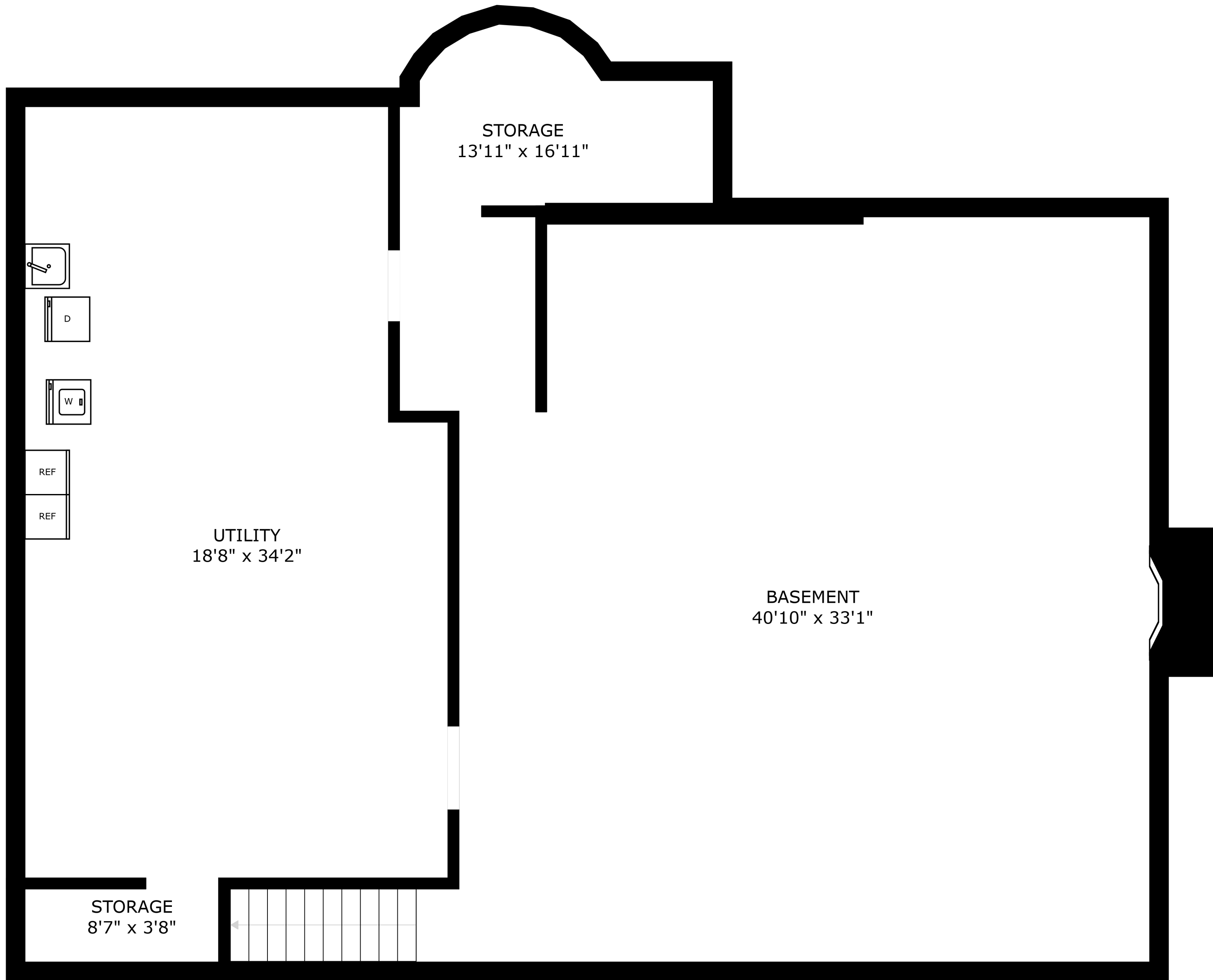


A floor plan of a rectangular room. The room is bounded by a thick black line. On the top wall, there is a window with a grid of 7 panes. A horizontal line extends from the right side of the window grid to the right wall, with a downward-pointing arrowhead. On the left wall, there is a door with a vertical line indicating the opening. On the right wall, there is a door with a vertical line indicating the opening. The room is mostly empty.

ROOM
22'1" x 14'7"



SIZES AND DIMENSIONS ARE APPROXIMATE, ACTUAL MAY VARY.



SIZES AND DIMENSIONS ARE APPROXIMATE, ACTUAL MAY VARY.