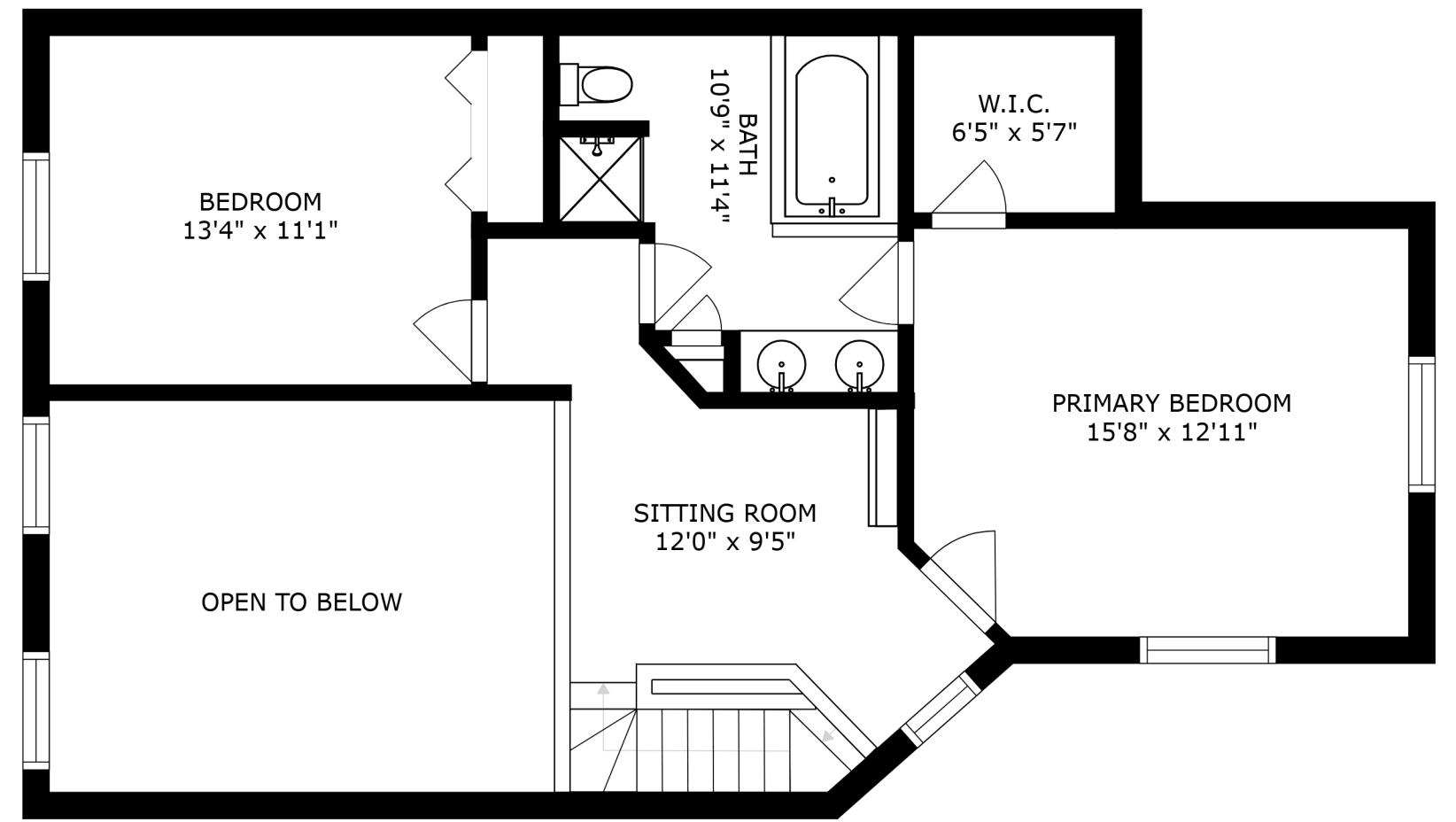
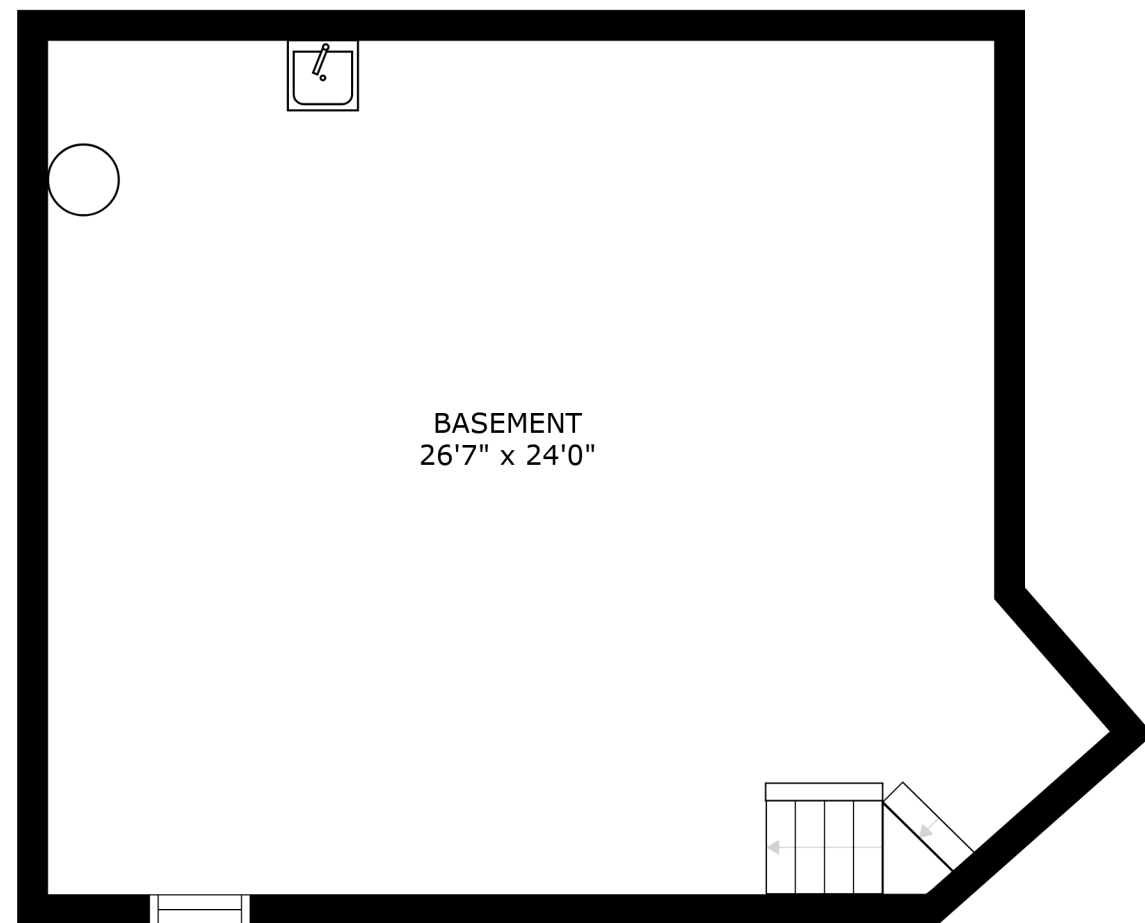


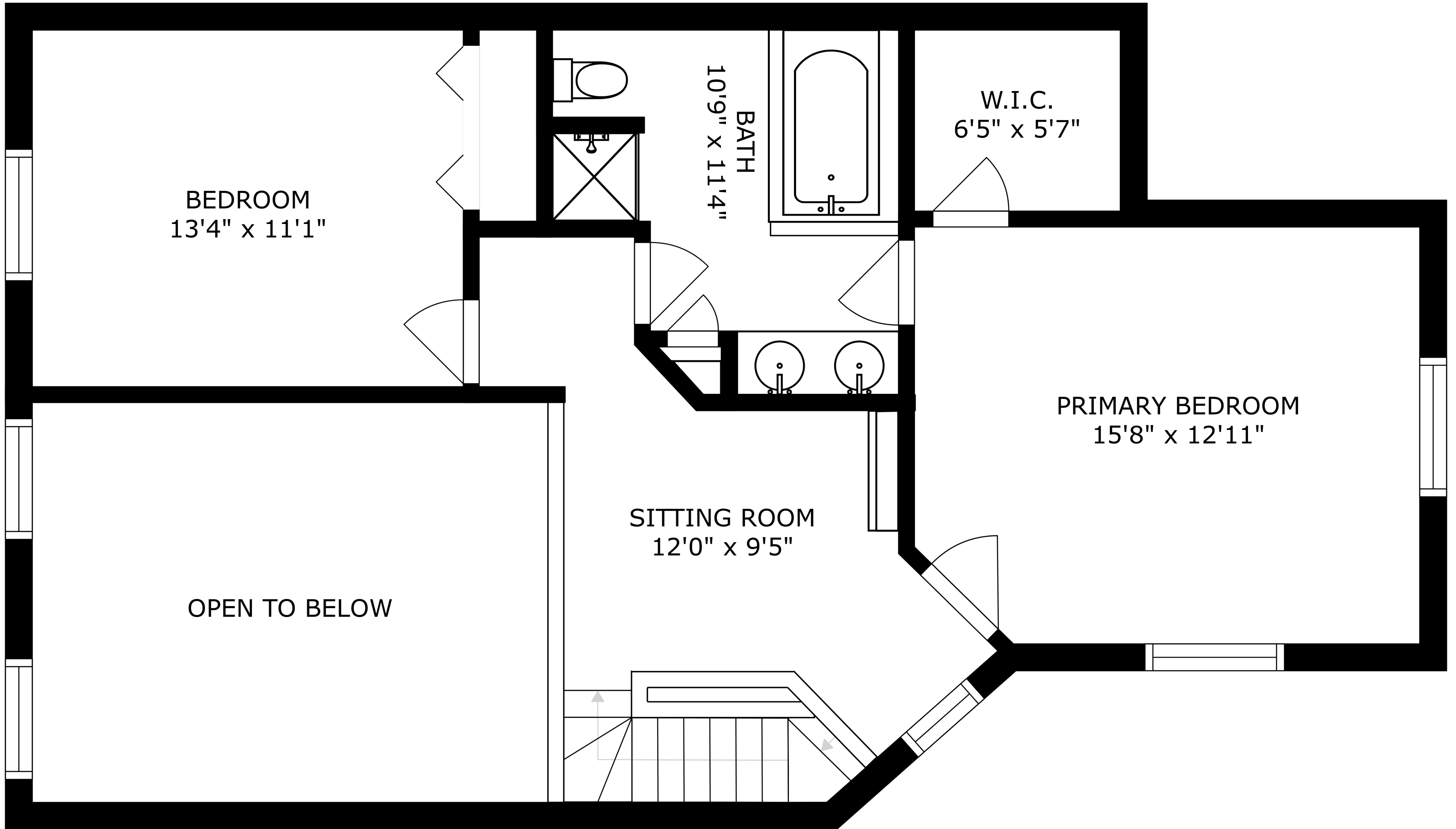
FLOOR 2



FLOOR 3



FLOOR 1



BEDROOM
13'4" x 11'1"

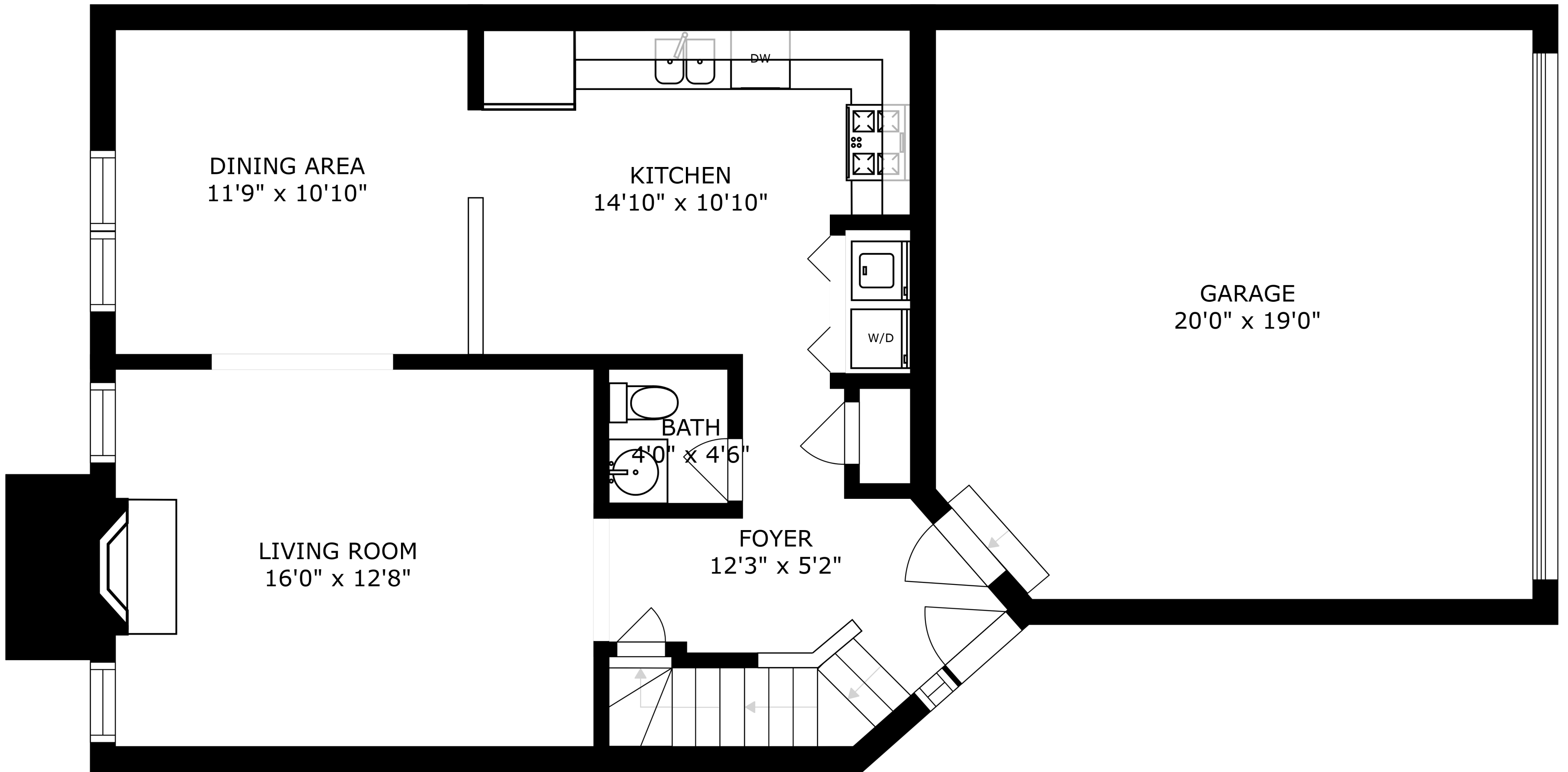
BATH
10'9" x 11'4"

W.I.C.
6'5" x 5'7"

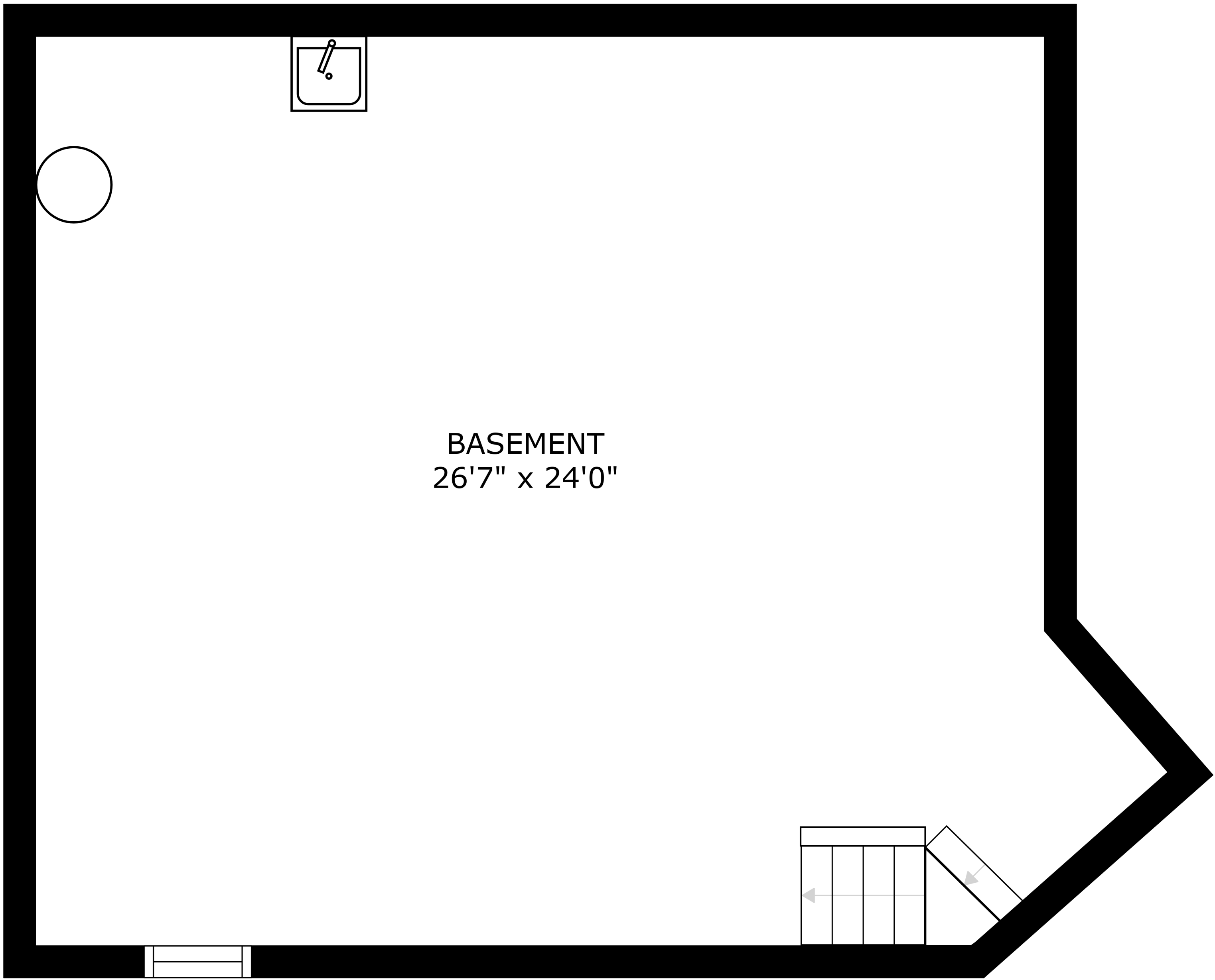
PRIMARY BEDROOM
15'8" x 12'11"

SITTING ROOM
12'0" x 9'5"

OPEN TO BELOW



SIZES AND DIMENSIONS ARE APPROXIMATE, ACTUAL MAY VARY.



BASEMENT
26'7" x 24'0"

SIZES AND DIMENSIONS ARE APPROXIMATE, ACTUAL MAY VARY.