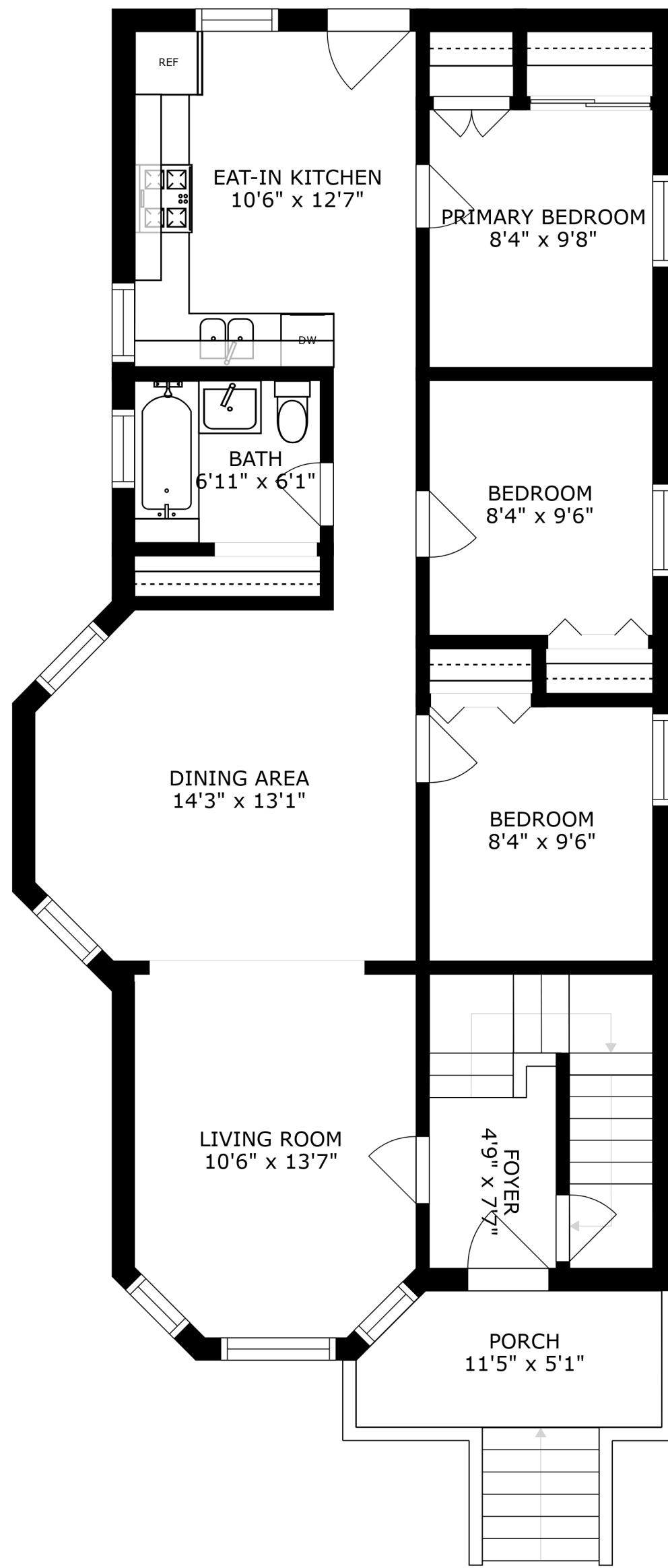


BASEMENT  
23'1" x 48'10"

STORAGE  
9'7" x 2'4"

FLOOR 1



EAT-IN KITCHEN  
10'6" x 12'7"

PRIMARY BEDROOM  
8'4" x 9'8"

DINING AREA  
14'3" x 13'1"

BEDROOM  
8'4" x 9'6"

LIVING ROOM  
10'6" x 13'7"

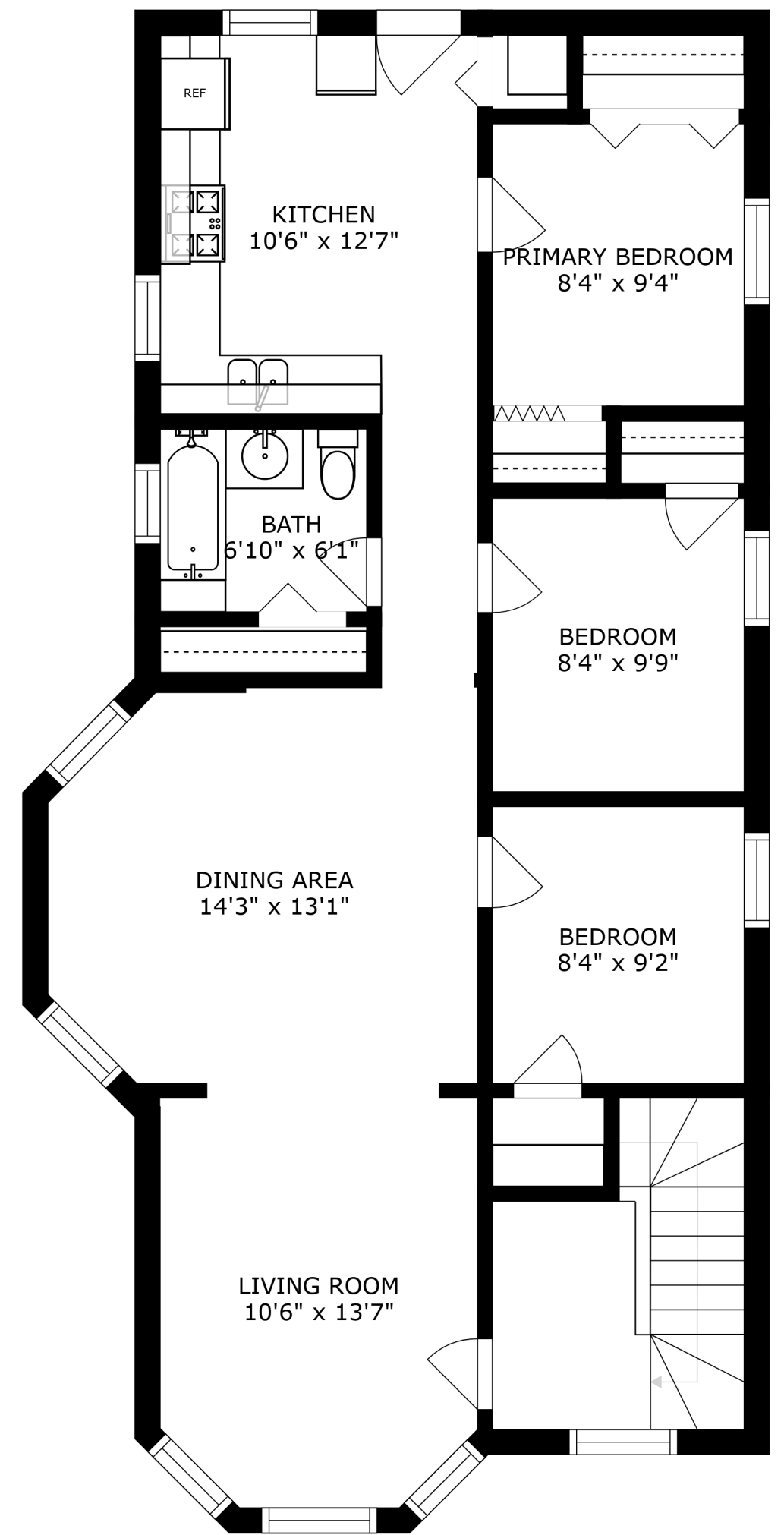
FOYER  
4'9" x 7'7"

PORCH  
11'5" x 5'1"

BATH  
6'11" x 6'1"

BEDROOM  
8'4" x 9'6"

FLOOR 2



KITCHEN  
10'6" x 12'7"

PRIMARY BEDROOM  
8'4" x 9'4"

BATH  
6'10" x 6'1"

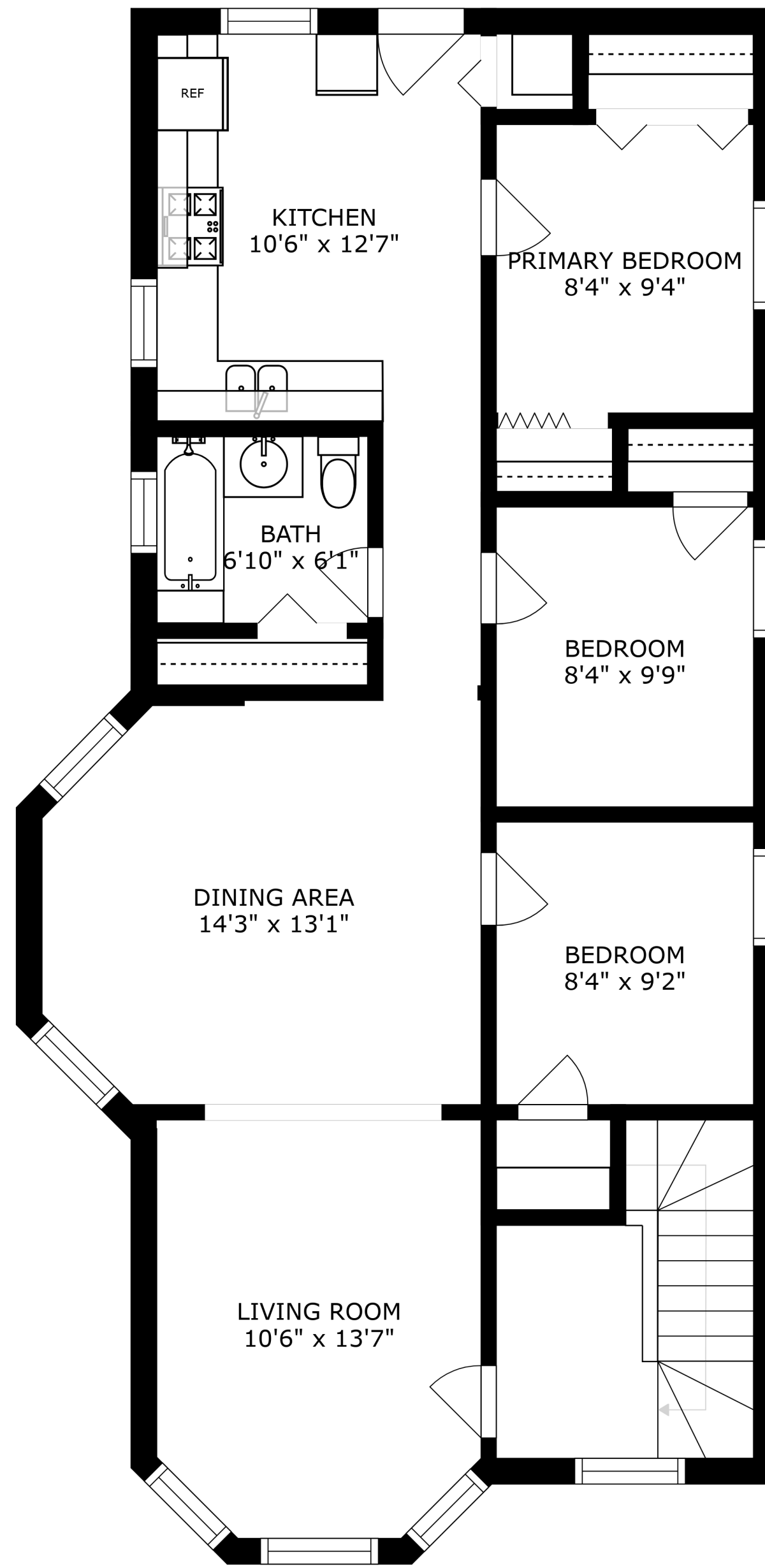
DINING AREA  
14'3" x 13'1"

BEDROOM  
8'4" x 9'9"

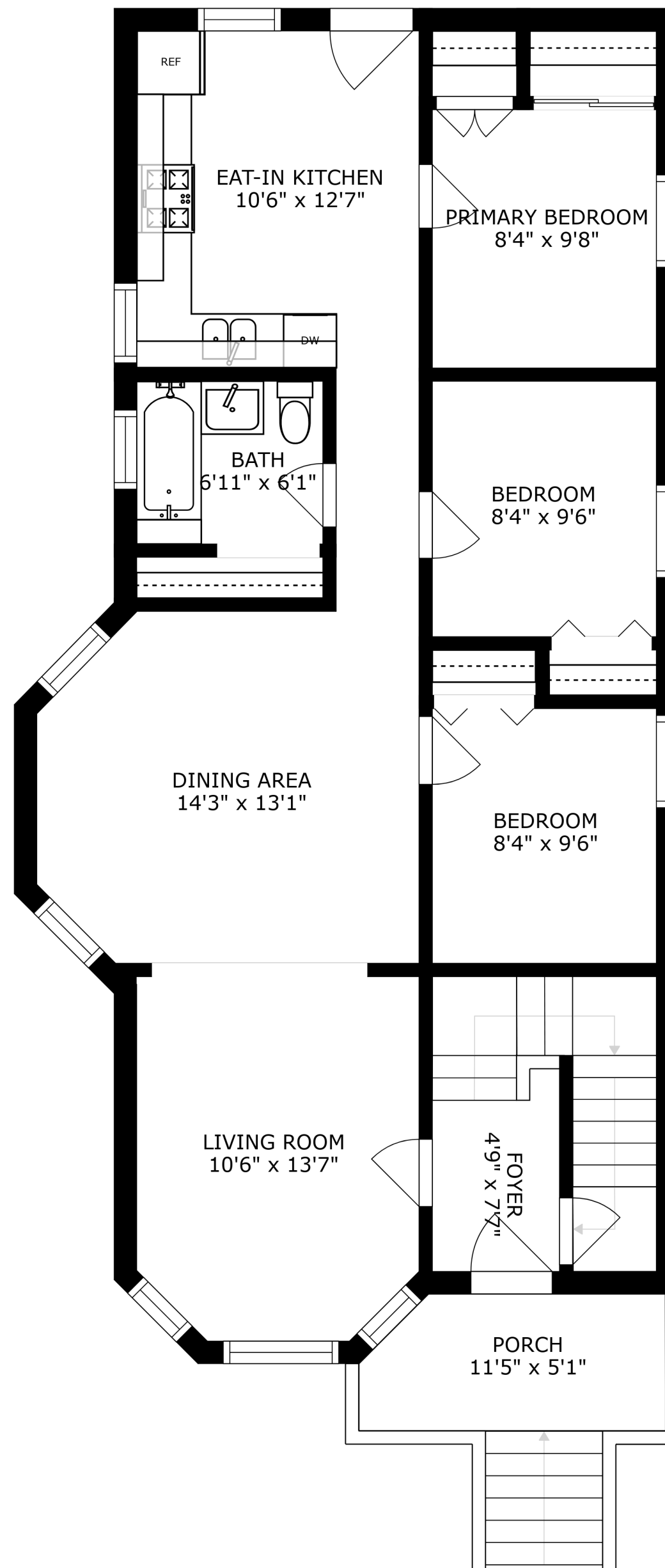
LIVING ROOM  
10'6" x 13'7"

BEDROOM  
8'4" x 9'2"

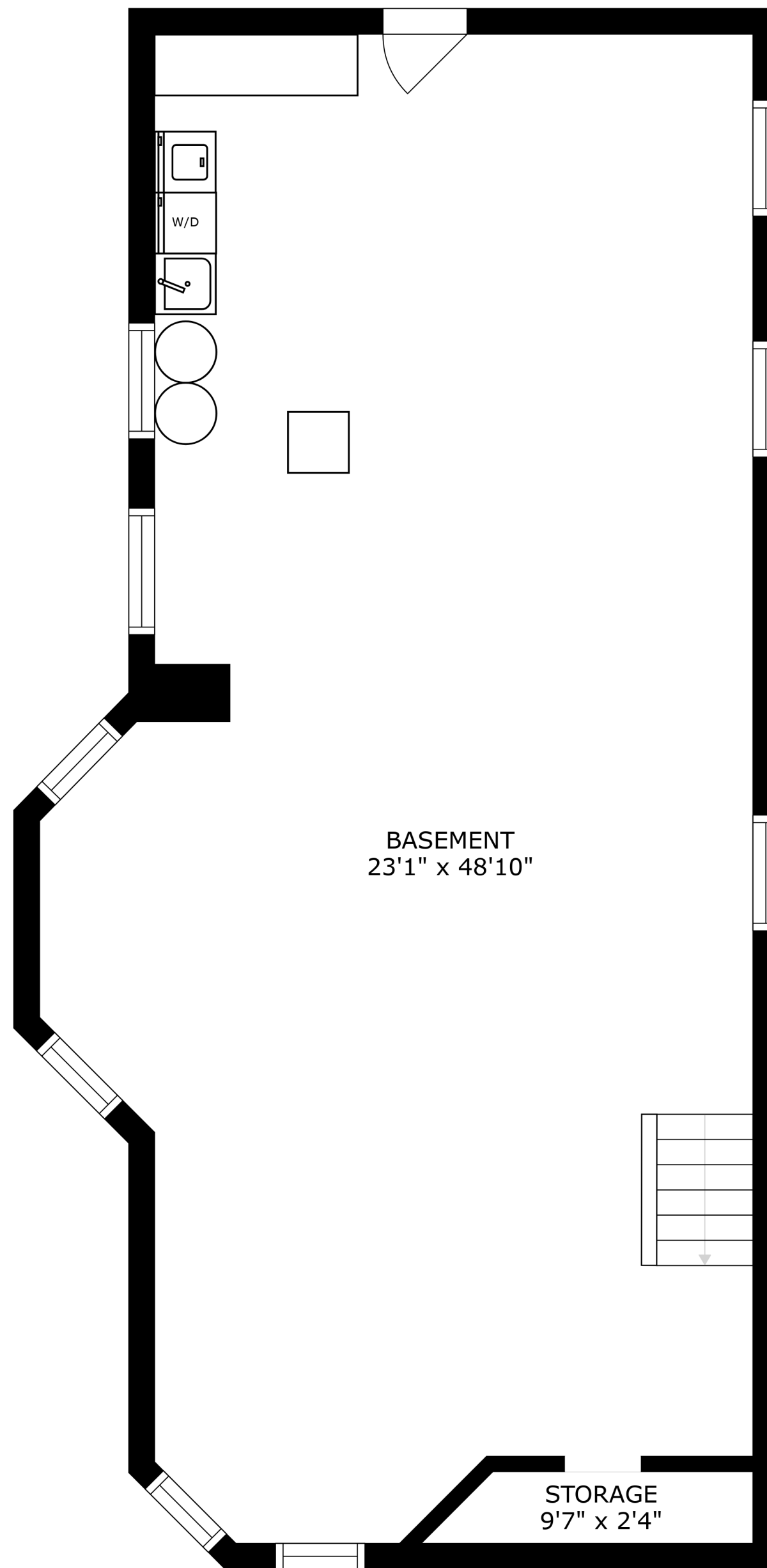
FLOOR 3



SIZES AND DIMENSIONS ARE APPROXIMATE, ACTUAL MAY VARY.



SIZES AND DIMENSIONS ARE APPROXIMATE, ACTUAL MAY VARY.



BASEMENT  
23'1" x 48'10"

STORAGE  
9'7" x 2'4"

SIZES AND DIMENSIONS ARE APPROXIMATE, ACTUAL MAY VARY.