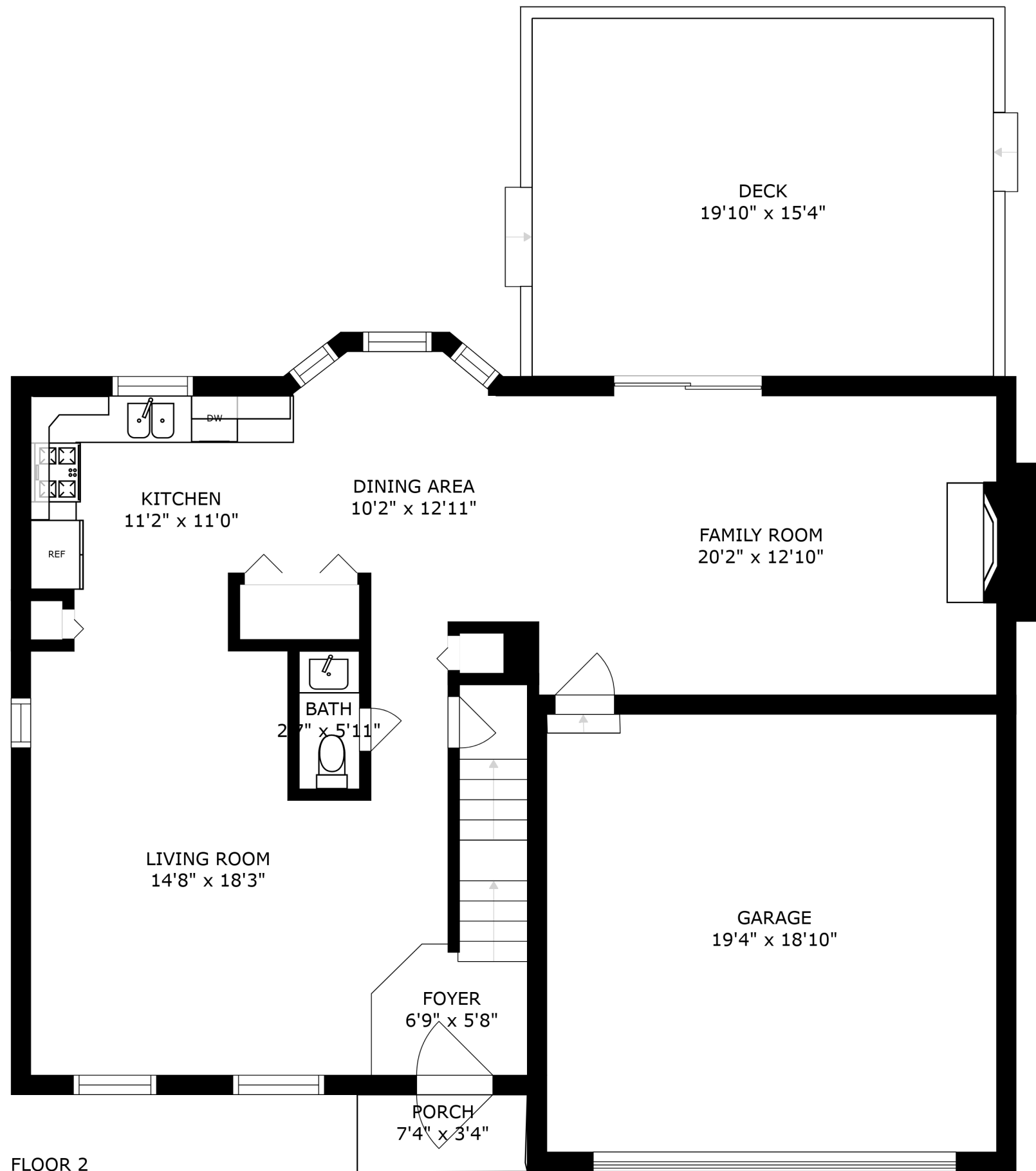


BASEMENT
21'4" x 28'8"

FLOOR 1



KITCHEN
11'2" x 11'0"

DINING AREA
10'2" x 12'11"

FAMILY ROOM
20'2" x 12'10"

LIVING ROOM
14'8" x 18'3"

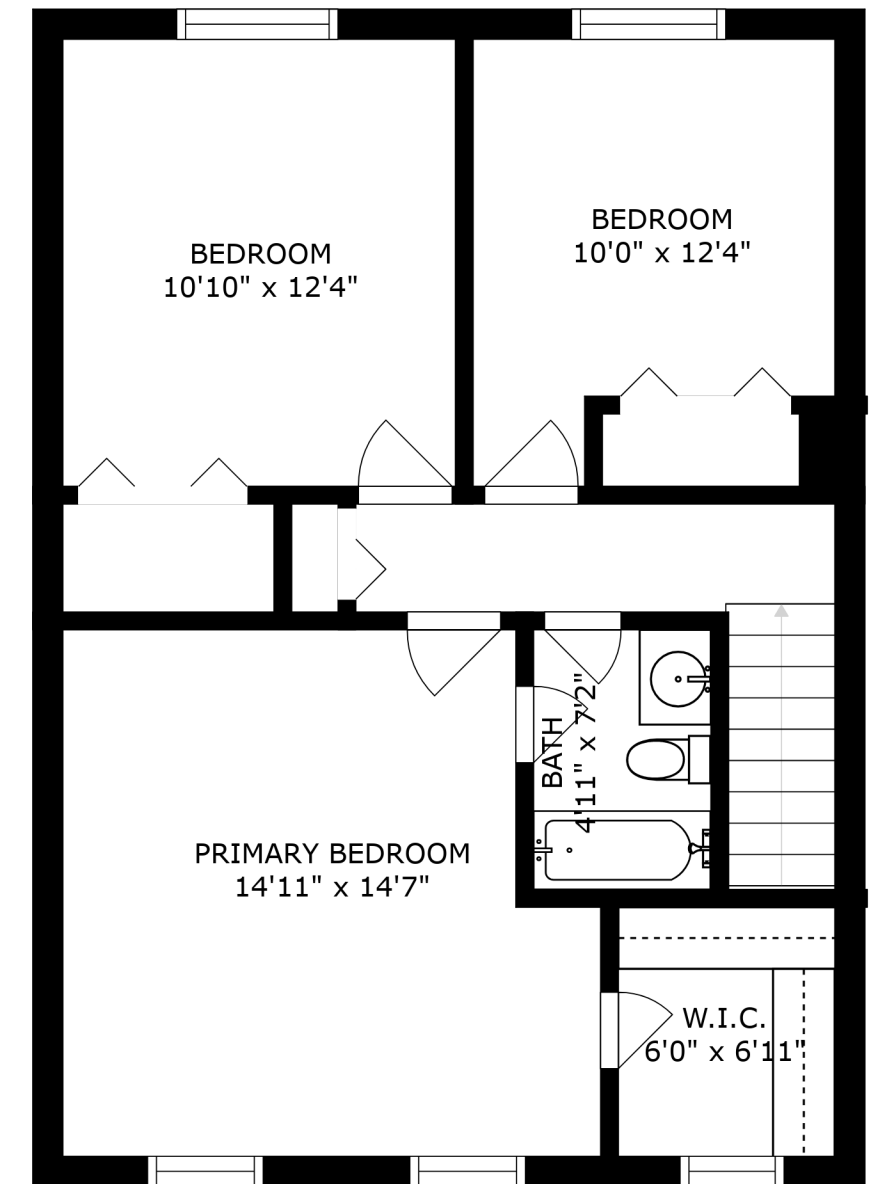
BATH
2'7" x 5'11"

GARAGE
19'4" x 18'10"

FOYER
6'9" x 5'8"

PORCH
7'4" x 3'4"

FLOOR 2



BEDROOM
10'10" x 12'4"

BEDROOM
10'0" x 12'4"

PRIMARY BEDROOM
14'11" x 14'7"

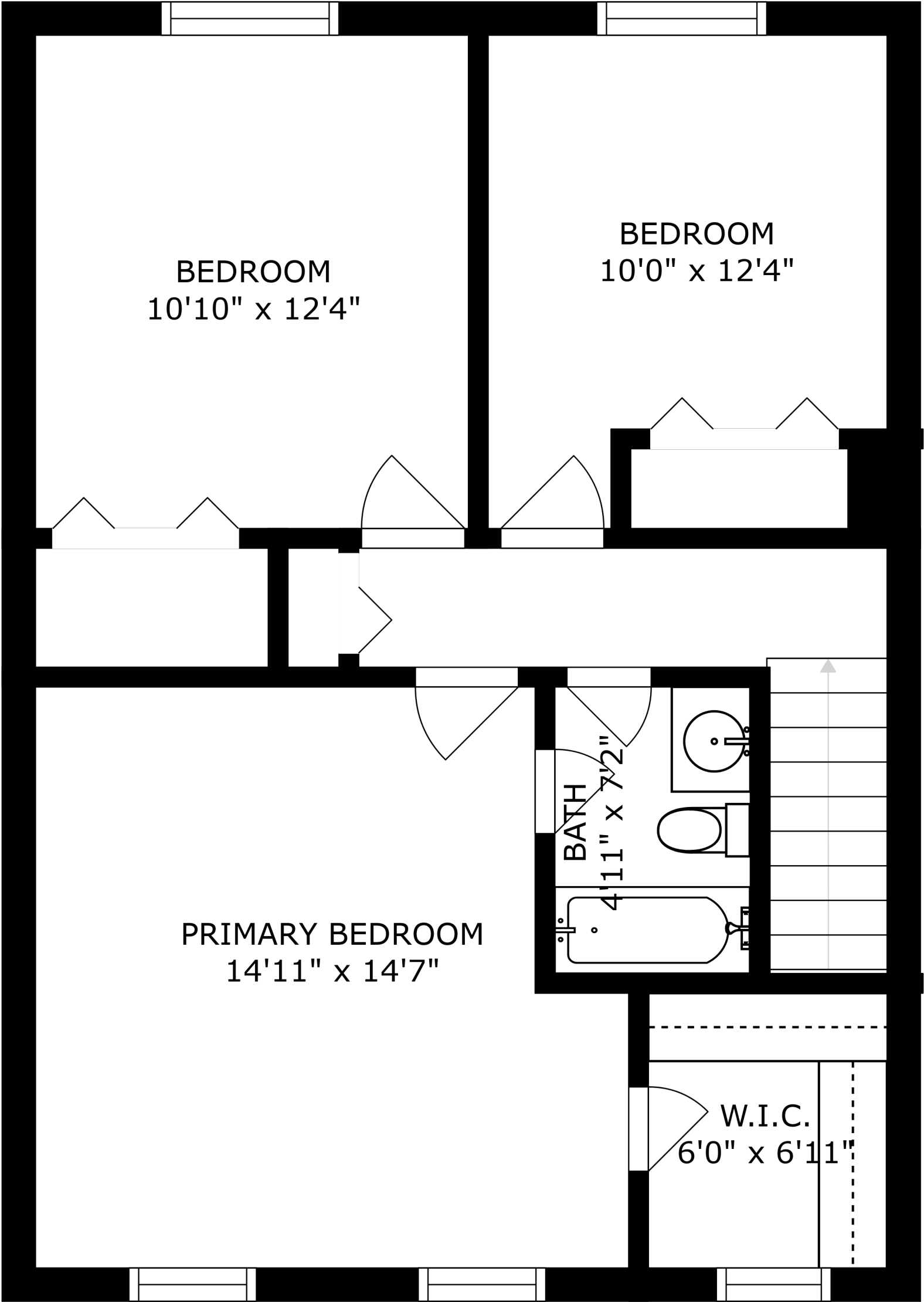
BATH
4'11" x 7'2"

W.I.C.
6'0" x 6'11"

FLOOR 3

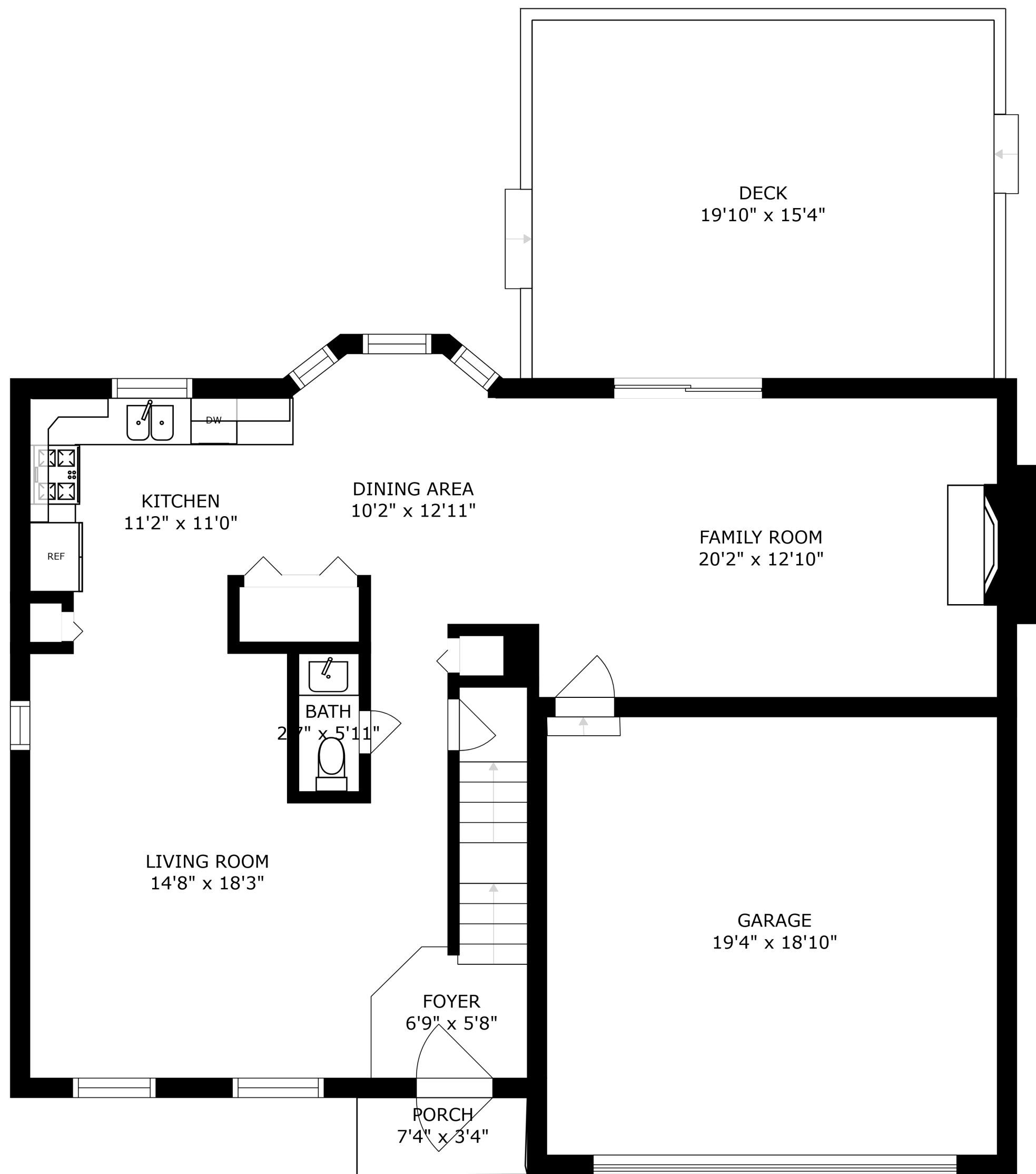
SIZES AND DIMENSIONS ARE APPROXIMATE, ACTUAL MAY VARY.





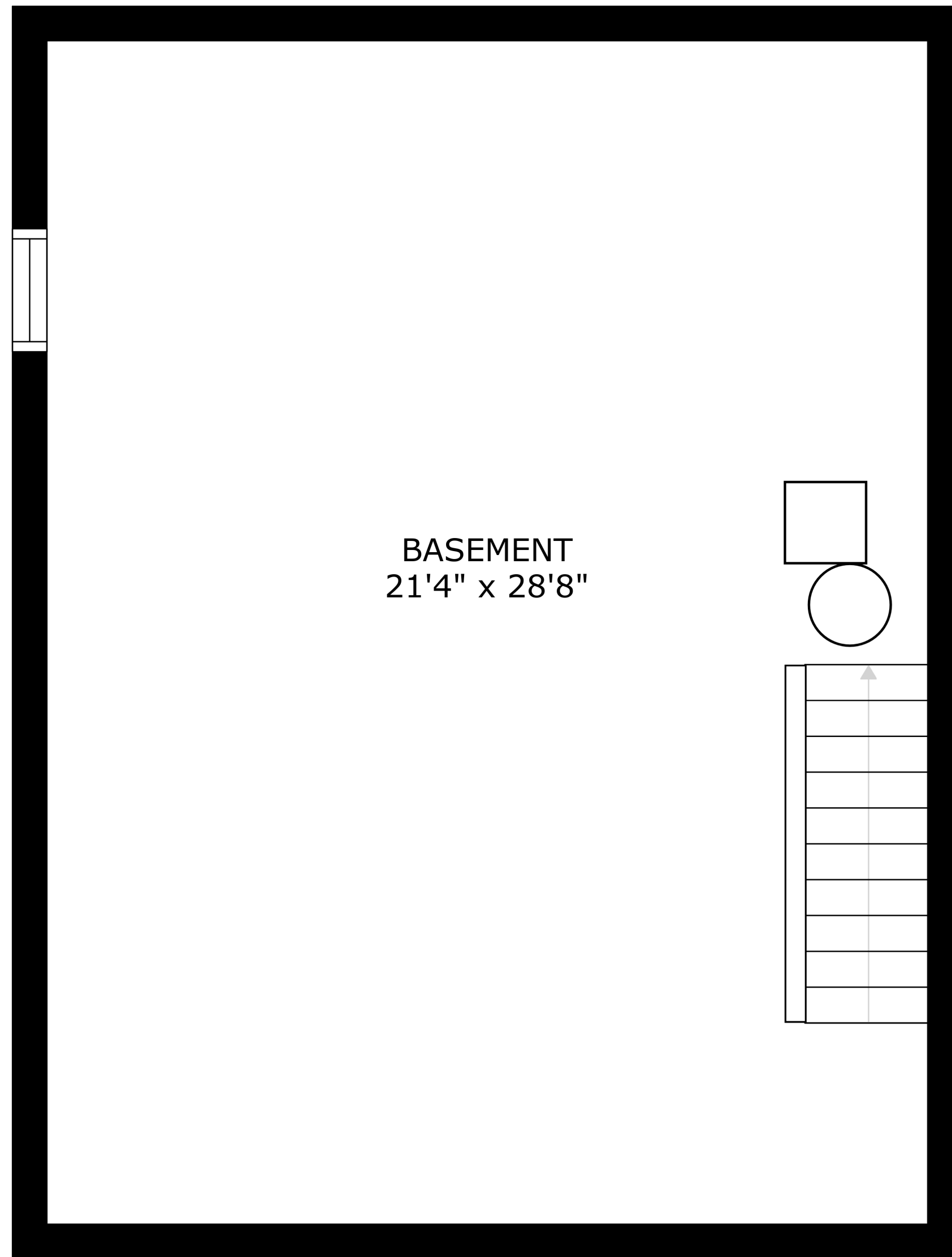
SIZES AND DIMENSIONS ARE APPROXIMATE, ACTUAL MAY VARY.





SIZES AND DIMENSIONS ARE APPROXIMATE, ACTUAL MAY VARY.





BASEMENT
21'4" x 28'8"

SIZES AND DIMENSIONS ARE APPROXIMATE, ACTUAL MAY VARY.

