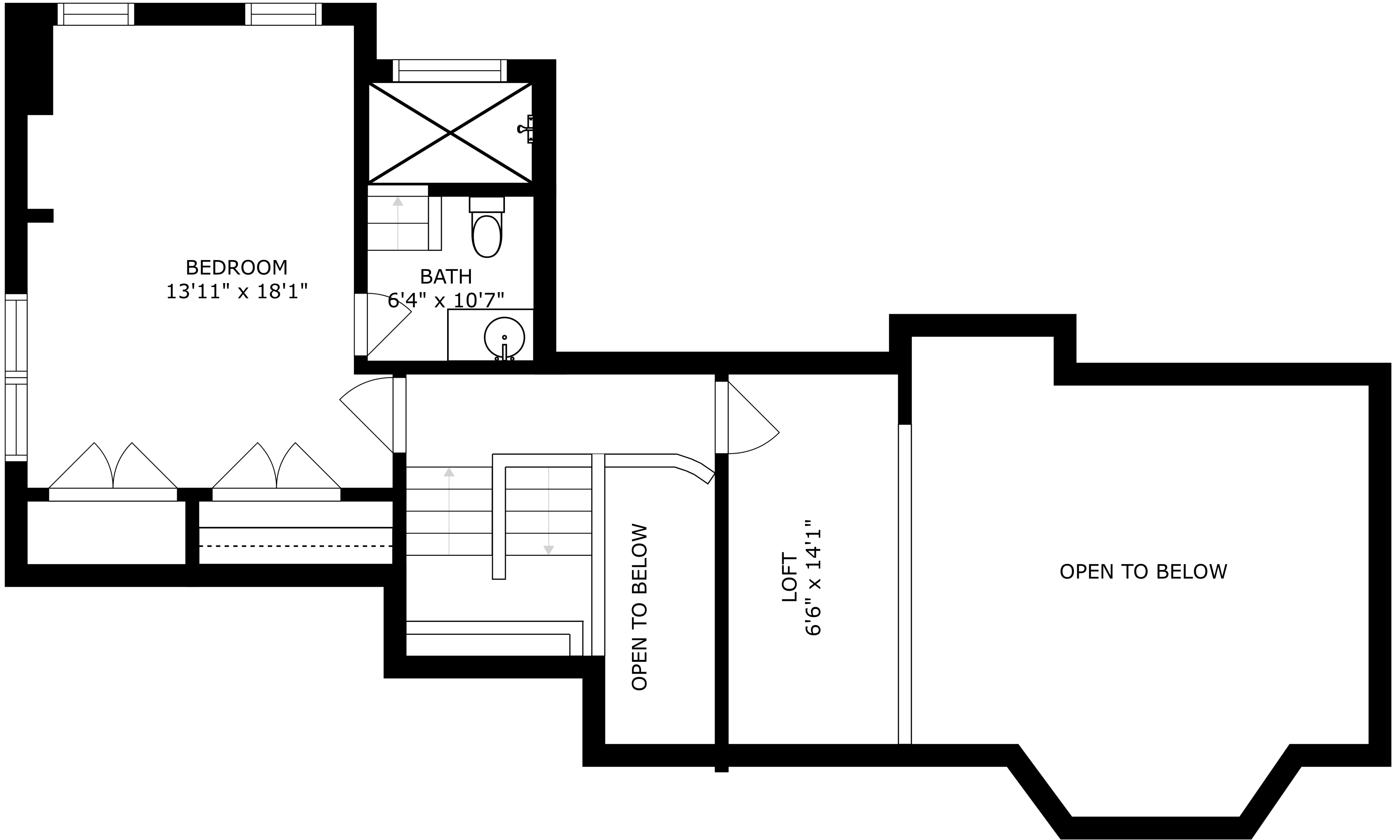


SIZES AND DIMENSIONS ARE APPROXIMATE, ACTUAL MAY VARY.



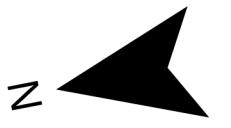
BEDROOM  
13'11" x 18'1"

BATH  
6'4" x 10'7"

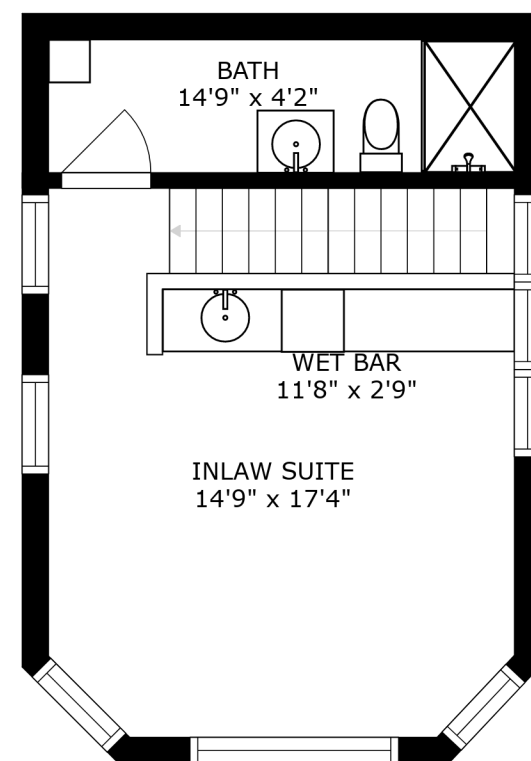
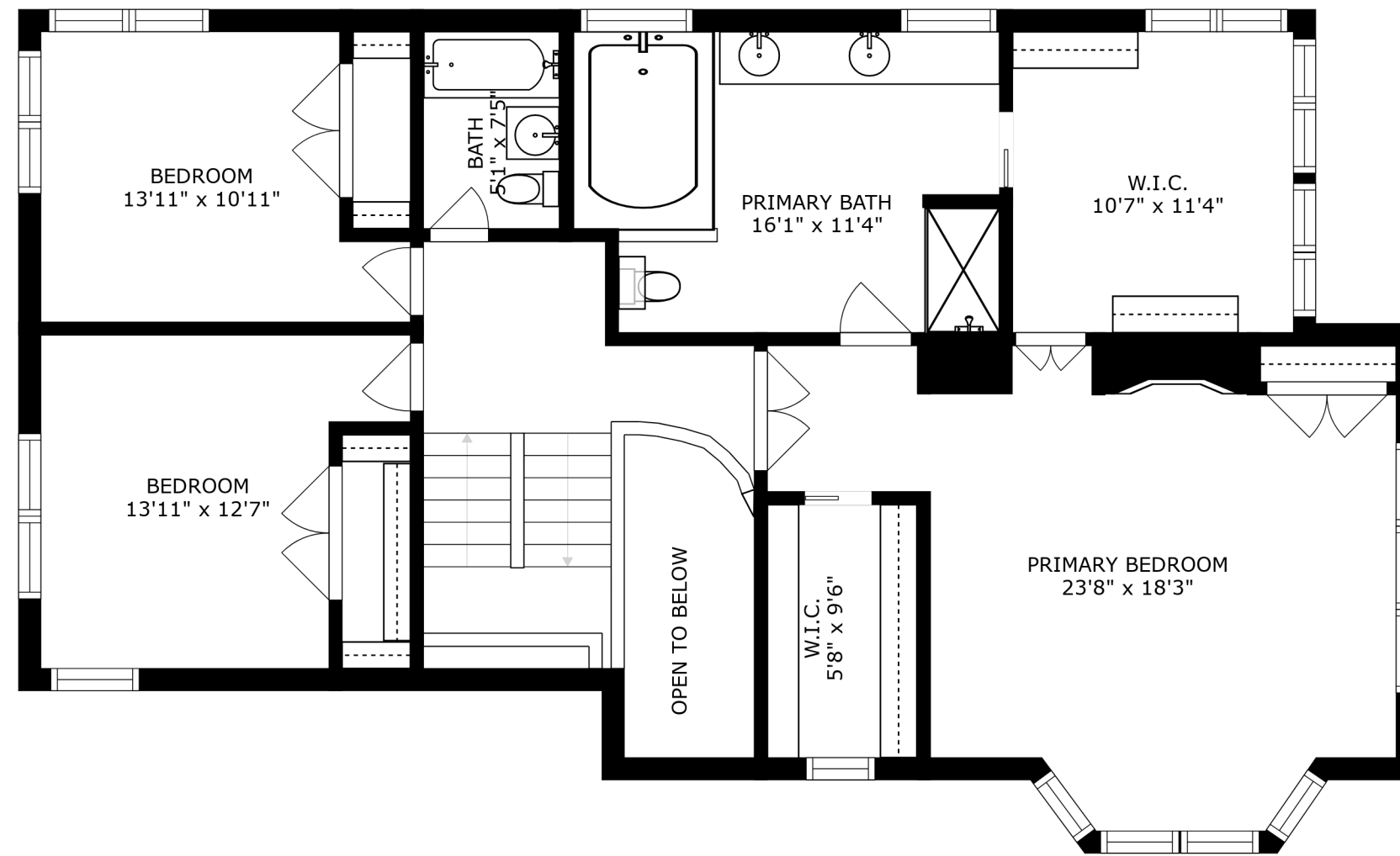
OPEN TO BELOW

LOFT  
6'6" x 14'1"

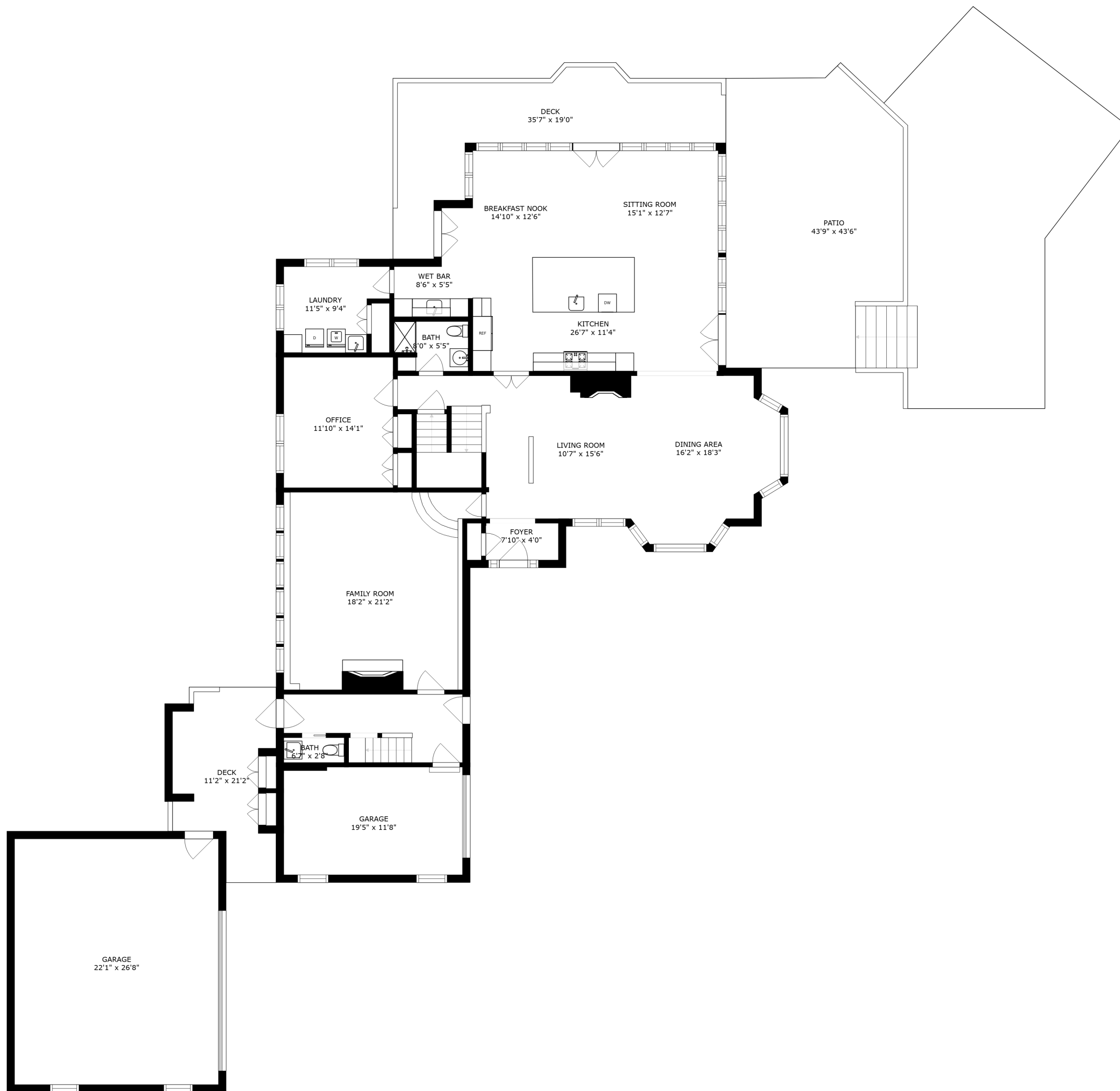
OPEN TO BELOW



SIZES AND DIMENSIONS ARE APPROXIMATE, ACTUAL MAY VARY.

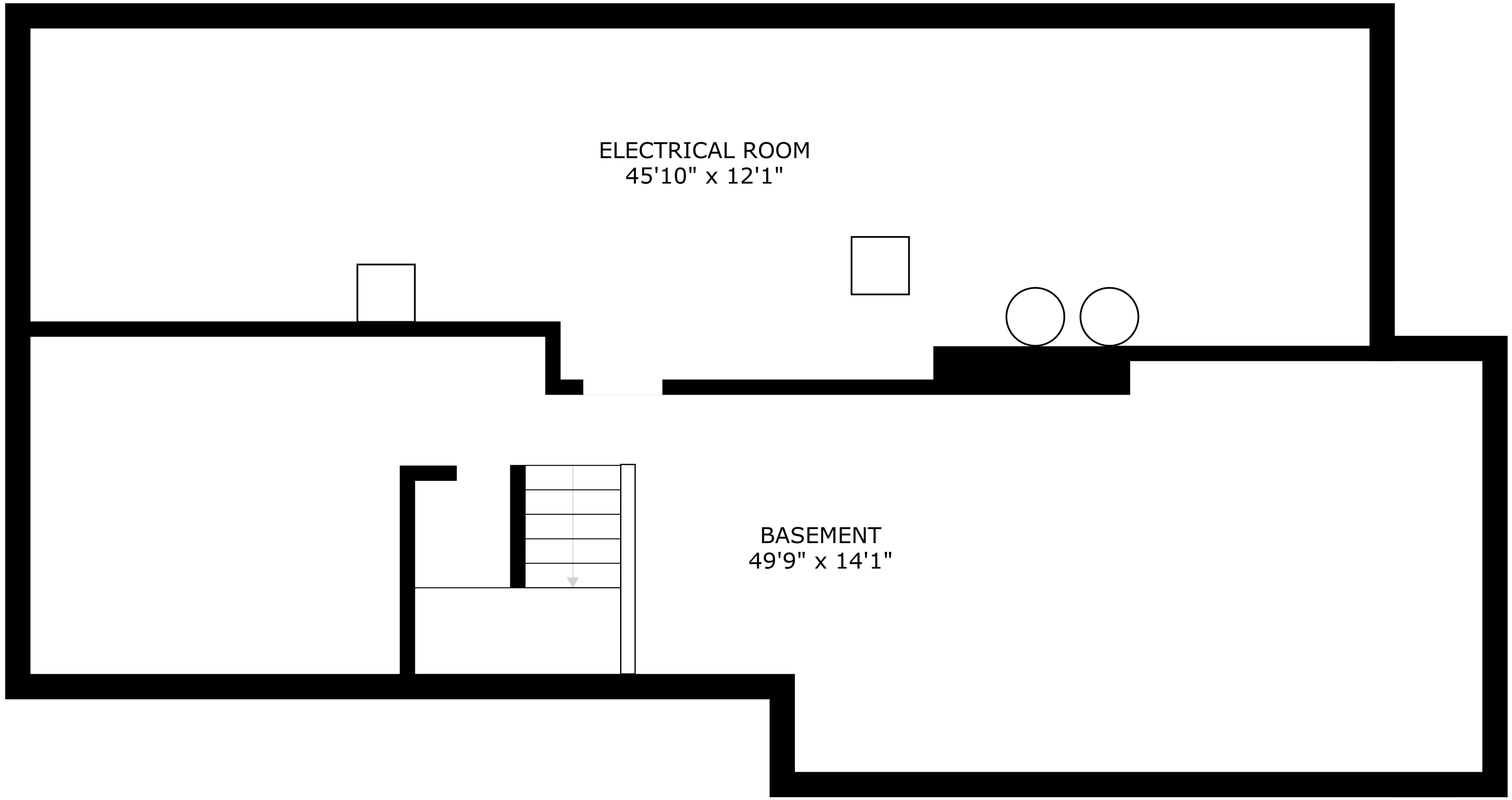


SIZES AND DIMENSIONS ARE APPROXIMATE, ACTUAL MAY VARY.



SIZES AND DIMENSIONS ARE APPROXIMATE, ACTUAL MAY VARY.





ELECTRICAL ROOM  
45'10" x 12'1"

BASEMENT  
49'9" x 14'1"

SIZES AND DIMENSIONS ARE APPROXIMATE, ACTUAL MAY VARY.

