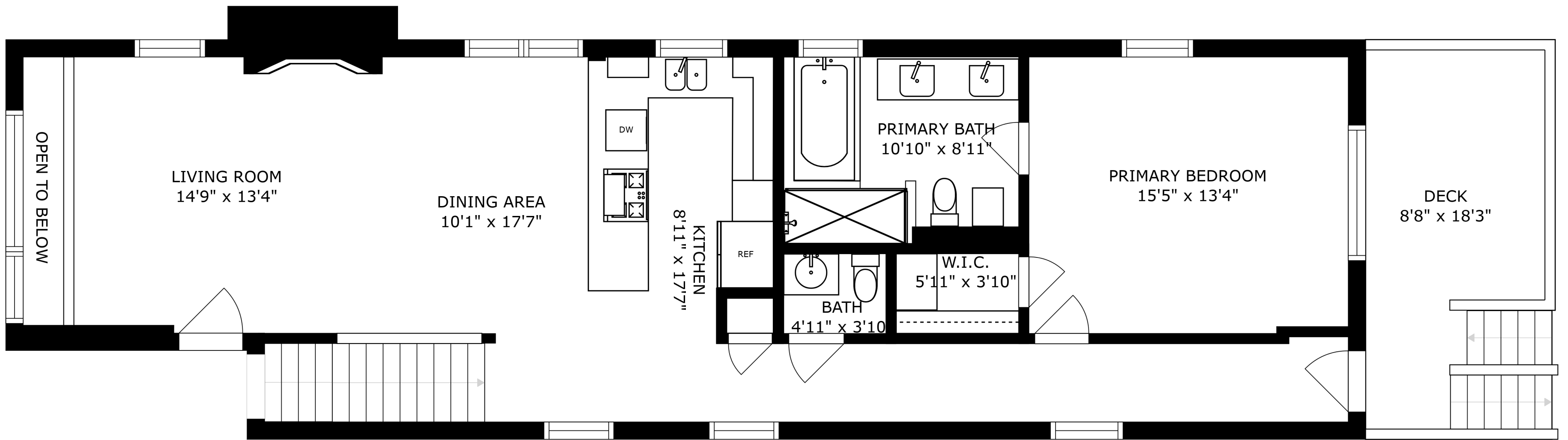


SIZES AND DIMENSIONS ARE APPROXIMATE, ACTUAL MAY VARY.



OPEN TO BELOW

LIVING ROOM
14'9" x 13'4"

DINING AREA
10'1" x 17'7"

KITCHEN
8'11" x 17'7"

PRIMARY BATH
10'10" x 8'11"

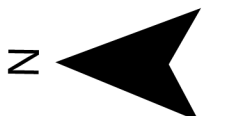
PRIMARY BEDROOM
15'5" x 13'4"

DECK
8'8" x 18'3"

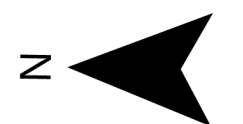
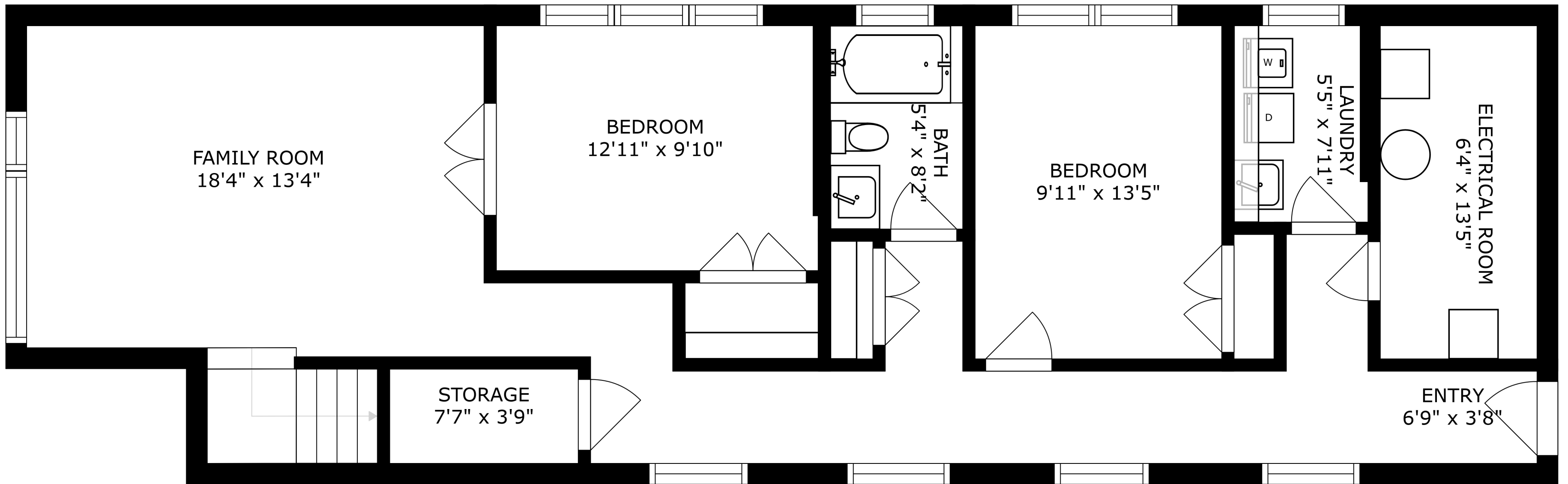
REF

BATH
4'11" x 3'10"

W.I.C.
5'11" x 3'10"



SIZES AND DIMENSIONS ARE APPROXIMATE, ACTUAL MAY VARY.



SIZES AND DIMENSIONS ARE APPROXIMATE, ACTUAL MAY VARY.