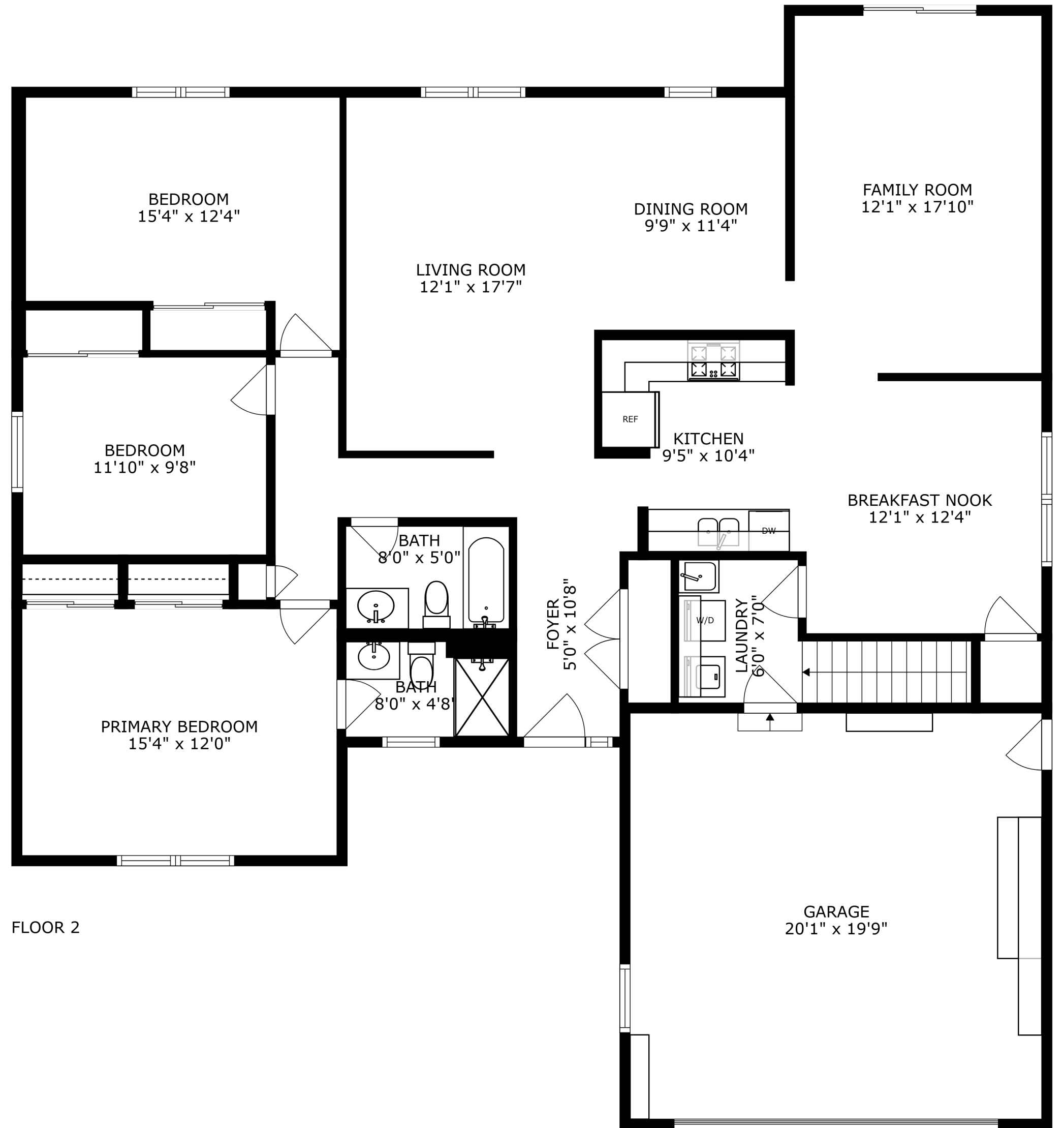


BASEMENT
33'1" x 32'10"

FLOOR 1



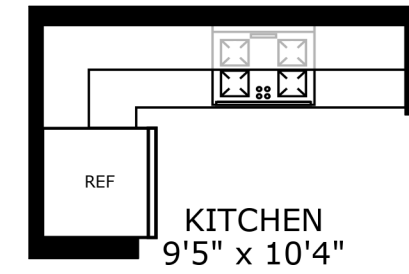
BEDROOM
15'4" x 12'4"

DINING ROOM
9'9" x 11'4"

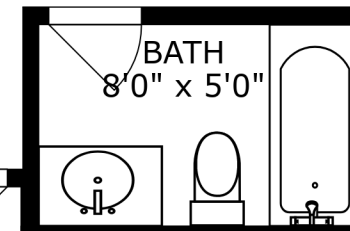
FAMILY ROOM
12'1" x 17'10"

LIVING ROOM
12'1" x 17'7"

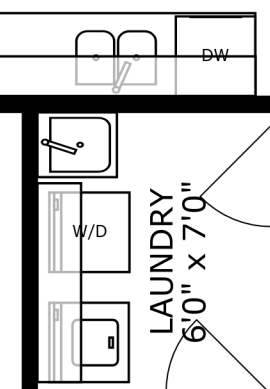
BEDROOM
11'10" x 9'8"



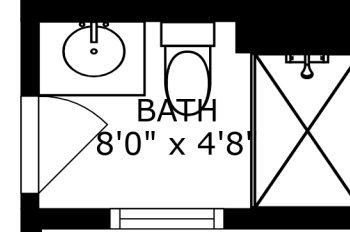
BREAKFAST NOOK
12'1" x 12'4"



FOYER
5'0" x 10'8"

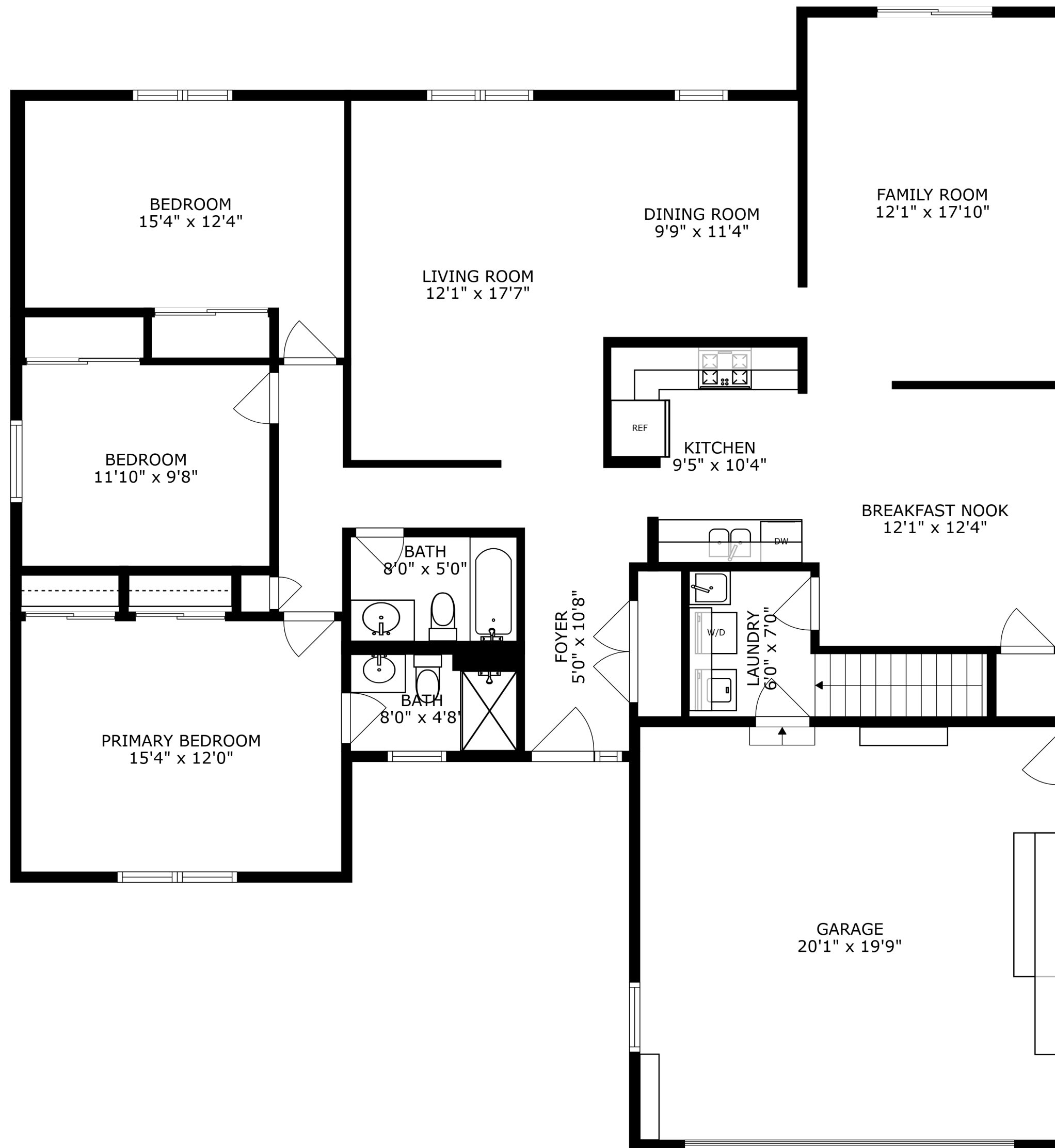


PRIMARY BEDROOM
15'4" x 12'0"

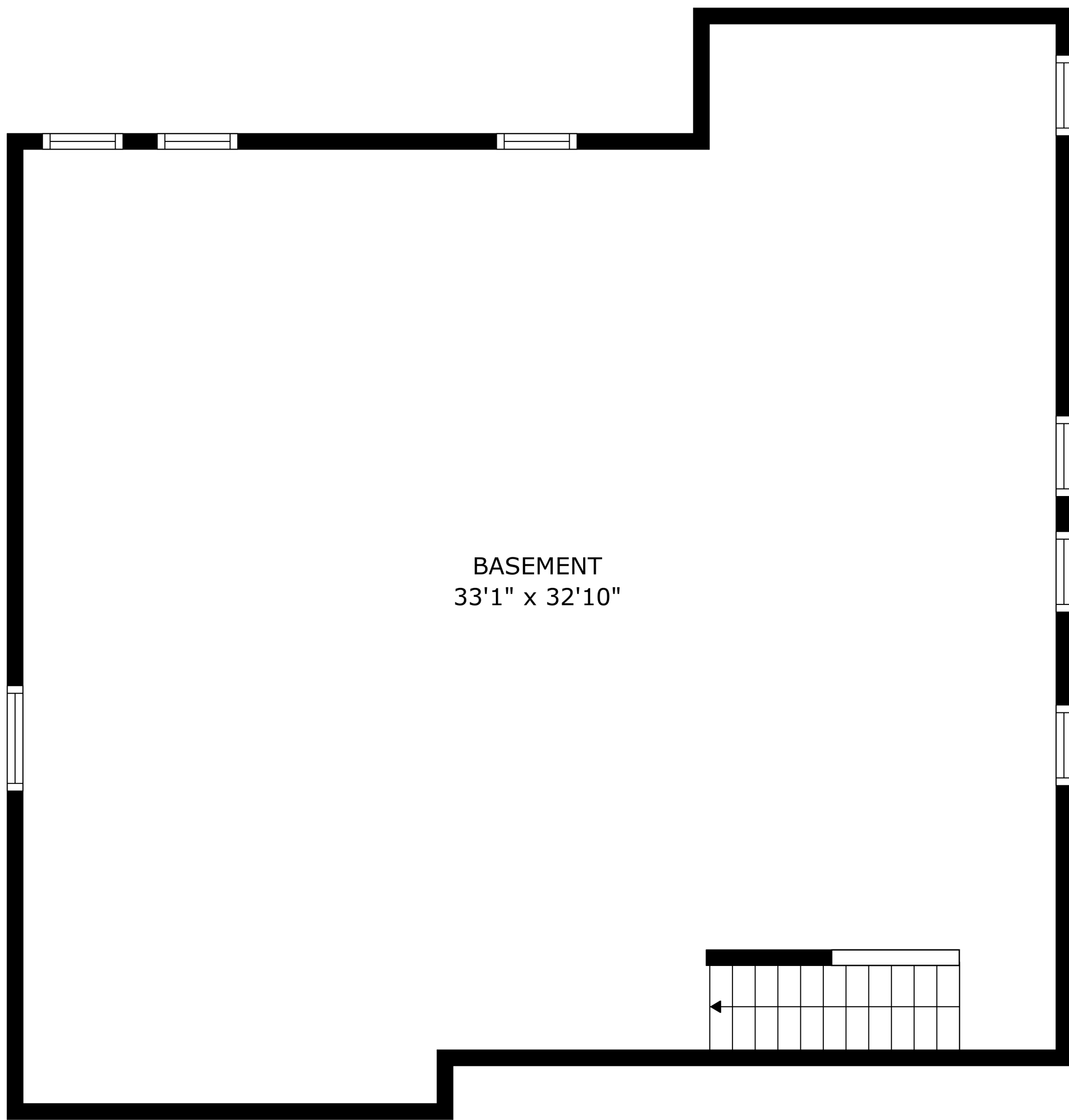


GARAGE
20'1" x 19'9"

FLOOR 2



SIZES AND DIMENSIONS ARE APPROXIMATE, ACTUAL MAY VARY.



BASEMENT
33'1" x 32'10"

SIZES AND DIMENSIONS ARE APPROXIMATE, ACTUAL MAY VARY.