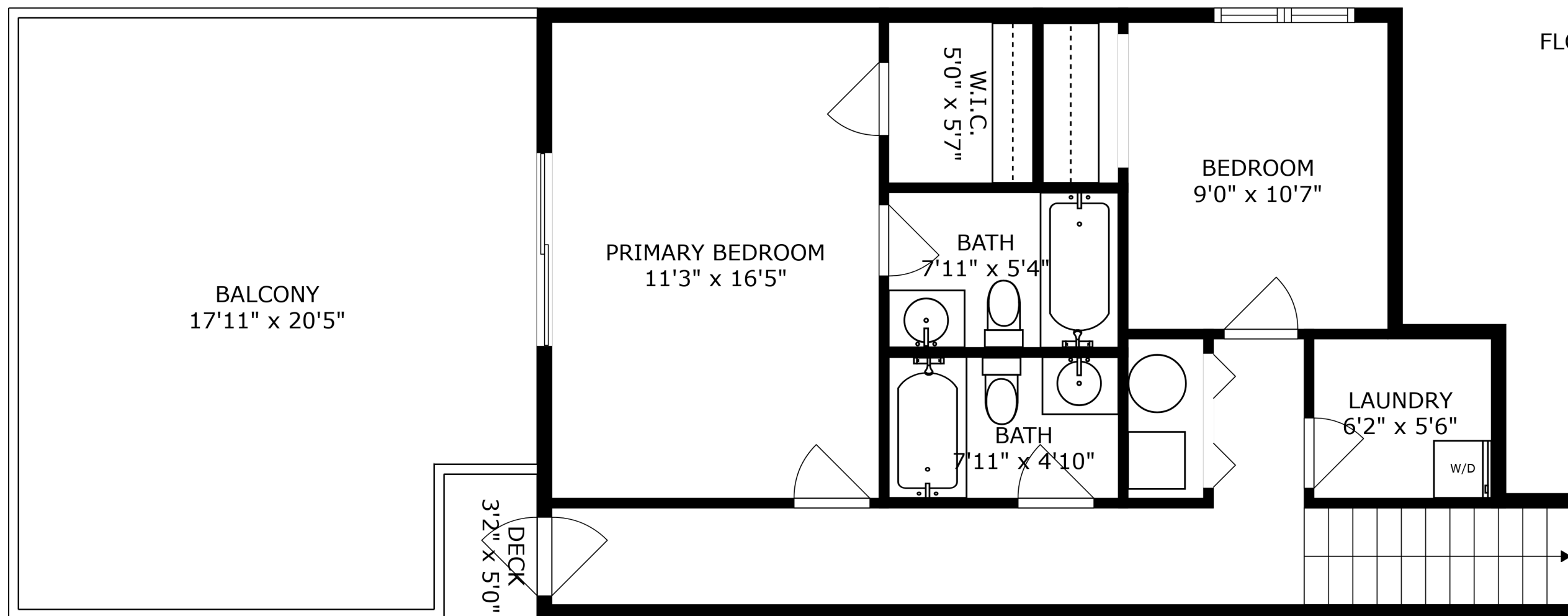
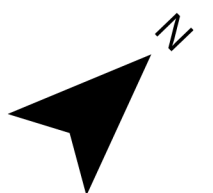


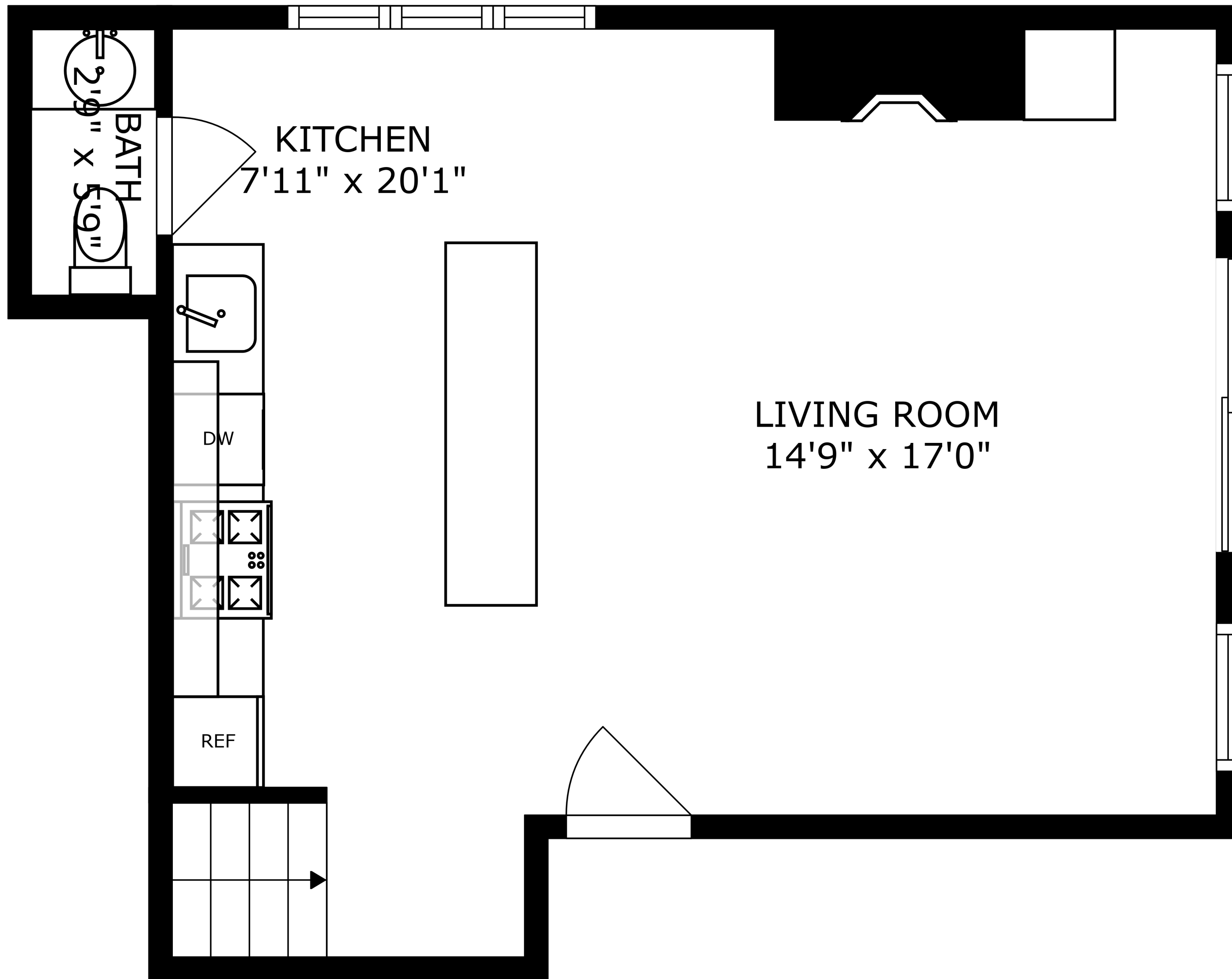
FLOOR 2



FLOOR 1

SIZES AND DIMENSIONS ARE APPROXIMATE, ACTUAL MAY VARY.





KITCHEN
7'11" x 20'1"

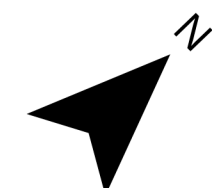
LIVING ROOM
14'9" x 17'0"

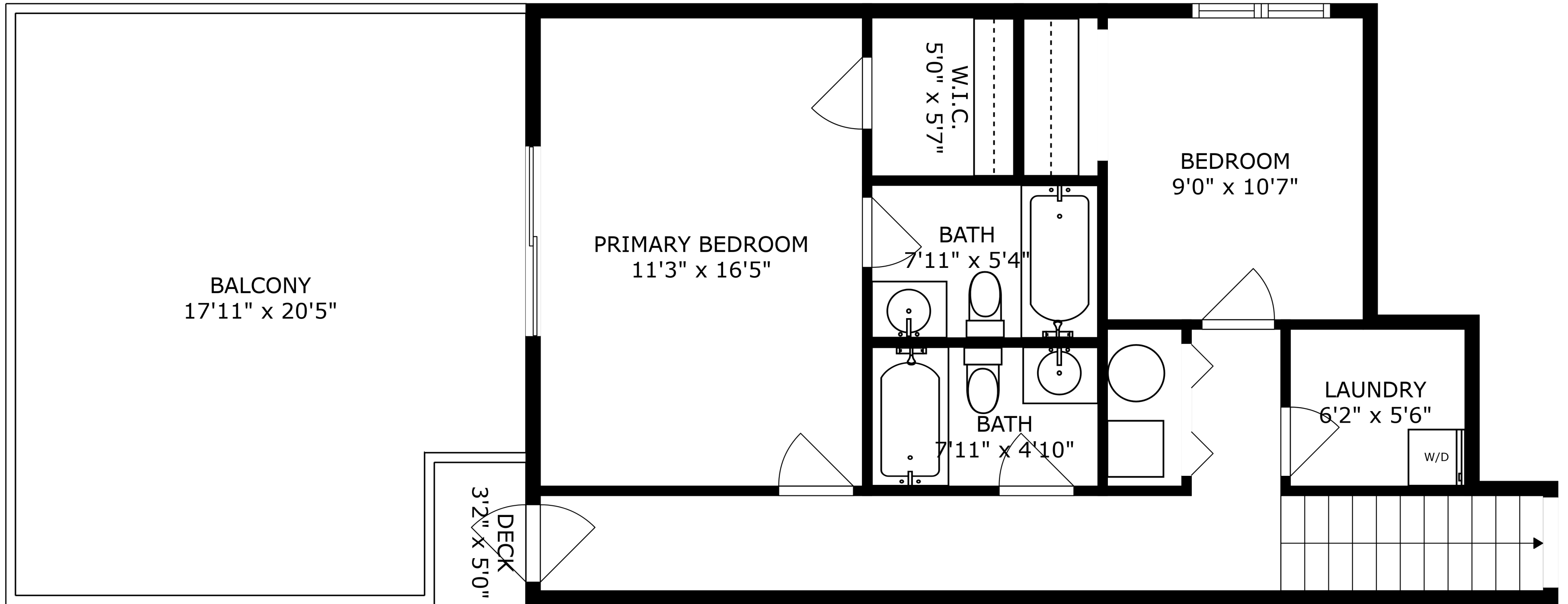
BATH
2'9" x 5'9"

DW

REF

SIZES AND DIMENSIONS ARE APPROXIMATE, ACTUAL MAY VARY.





SIZES AND DIMENSIONS ARE APPROXIMATE, ACTUAL MAY VARY.

