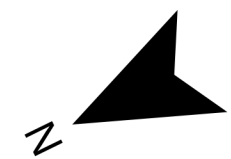
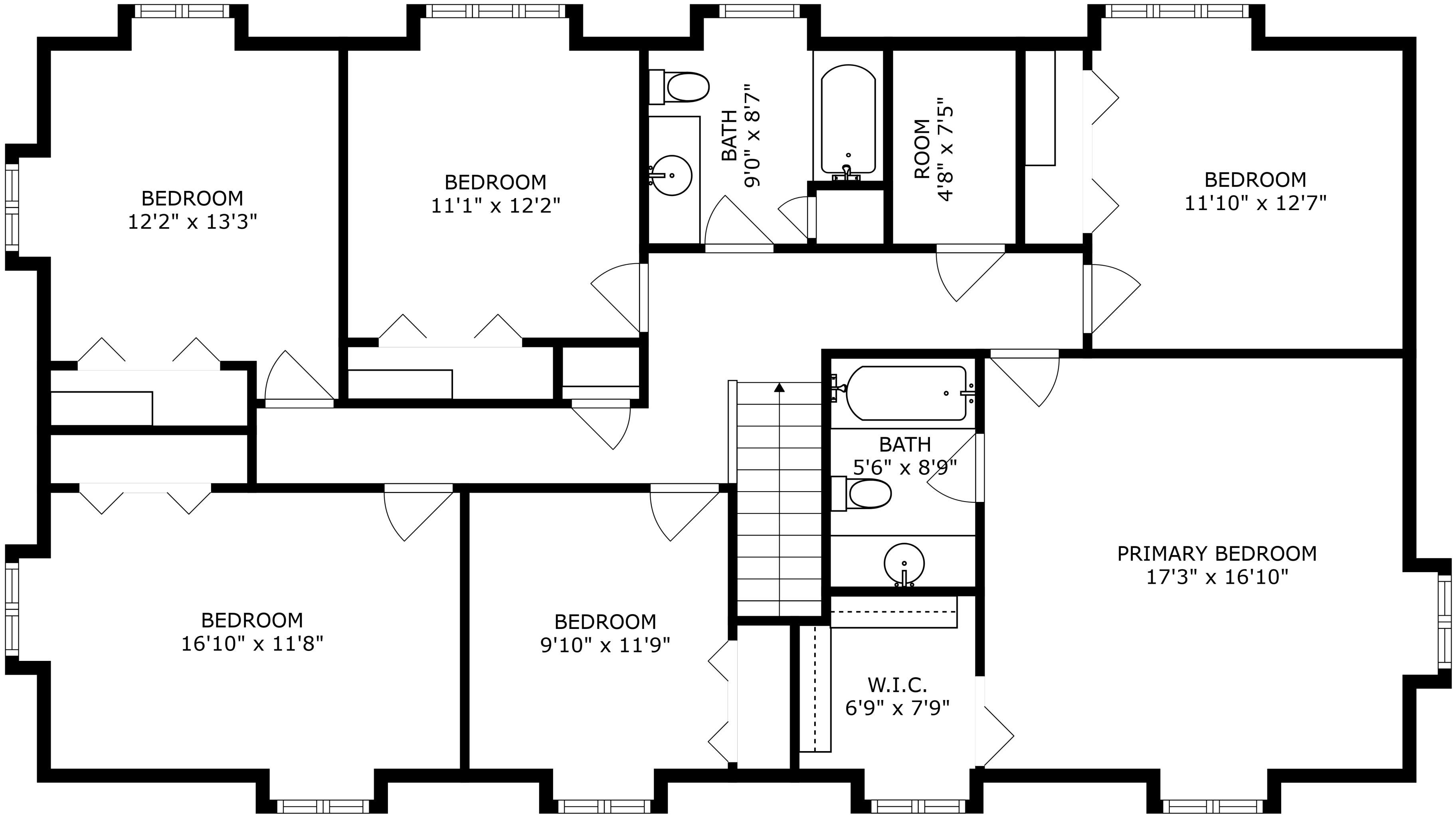


SIZES AND DIMENSIONS ARE APPROXIMATE, ACTUAL MAY VARY.





BEDROOM
12'2" x 13'3"

BEDROOM
11'1" x 12'2"

BATH
9'0" x 8'7"

ROOM
4'8" x 7'5"

BEDROOM
11'10" x 12'7"

BATH
5'6" x 8'9"

PRIMARY BEDROOM
17'3" x 16'10"

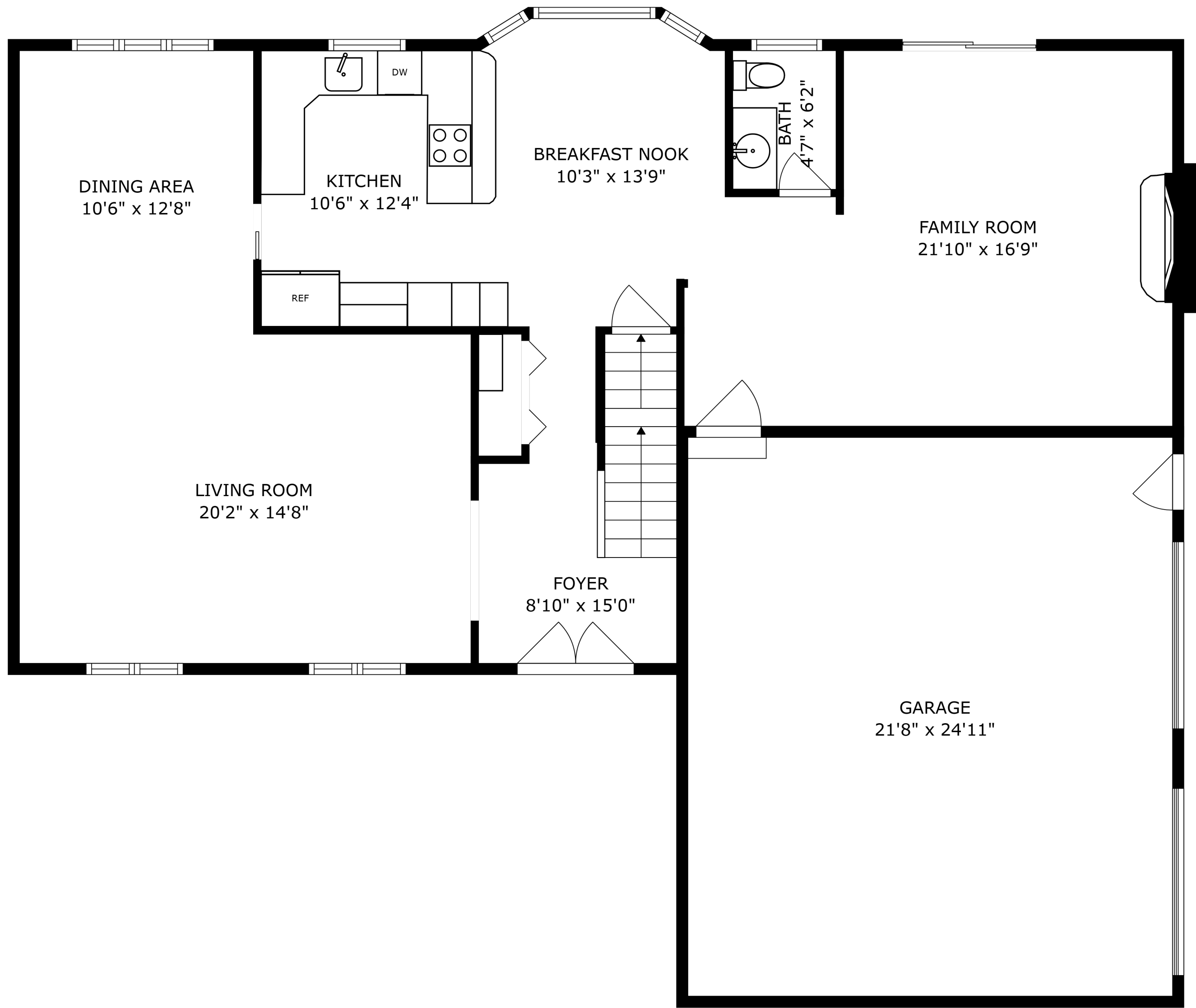
BEDROOM
16'10" x 11'8"

BEDROOM
9'10" x 11'9"

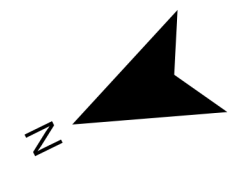
W.I.C.
6'9" x 7'9"

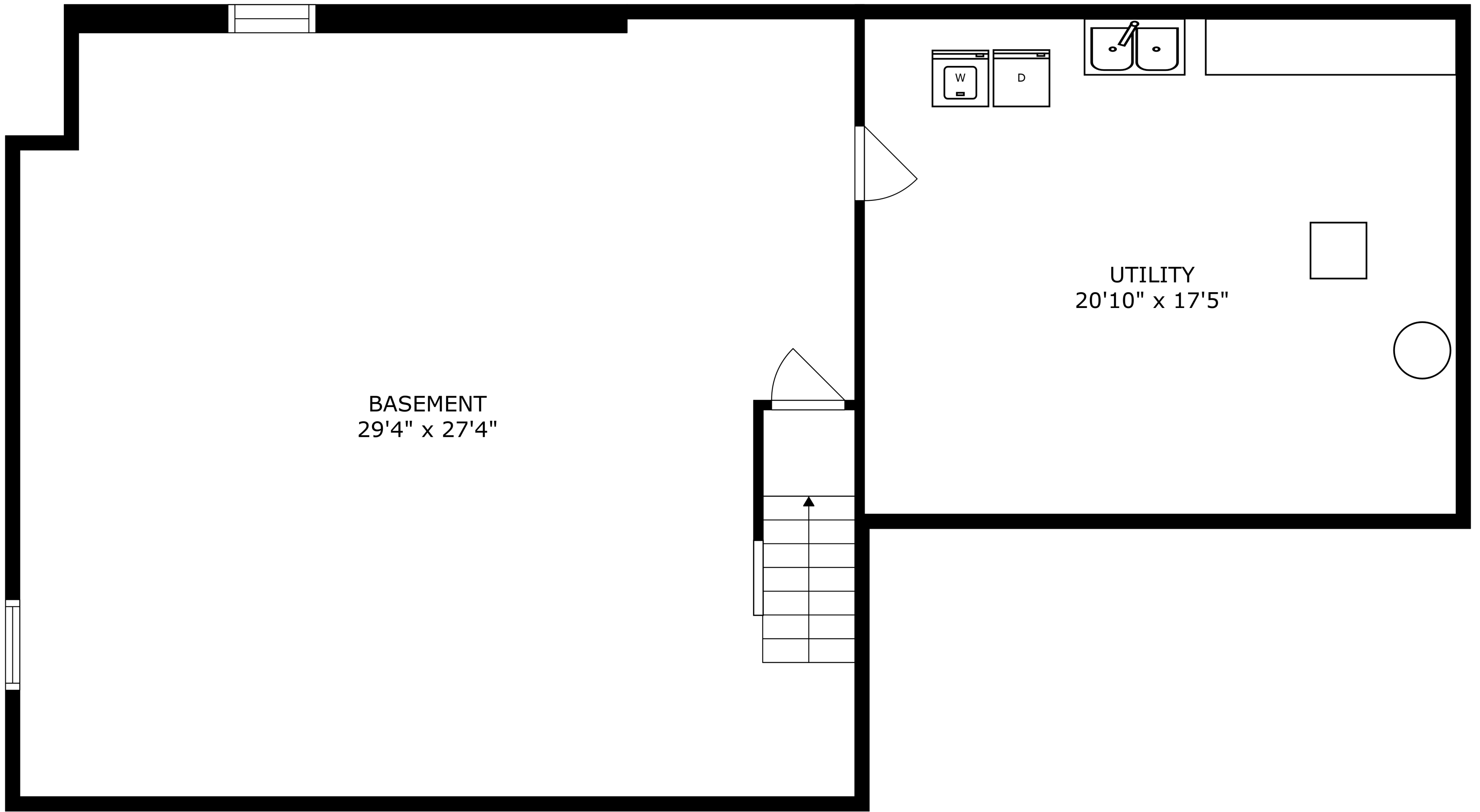
SIZES AND DIMENSIONS ARE APPROXIMATE, ACTUAL MAY VARY.





SIZES AND DIMENSIONS ARE APPROXIMATE, ACTUAL MAY VARY.





BASEMENT
29'4" x 27'4"

UTILITY
20'10" x 17'5"

