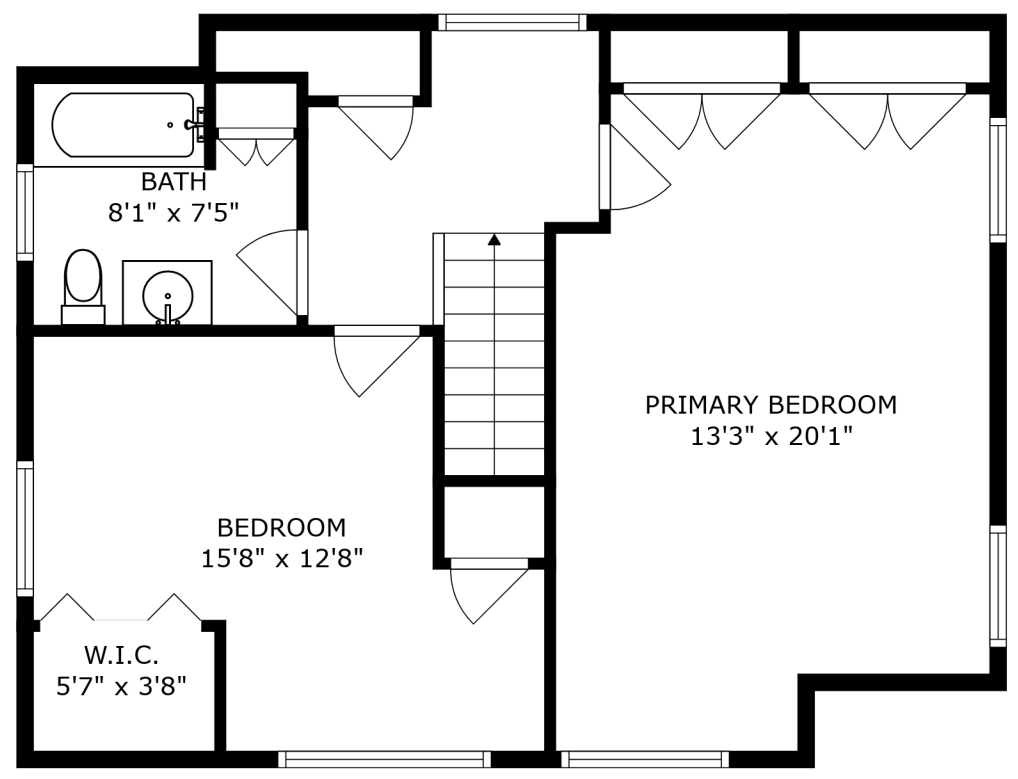
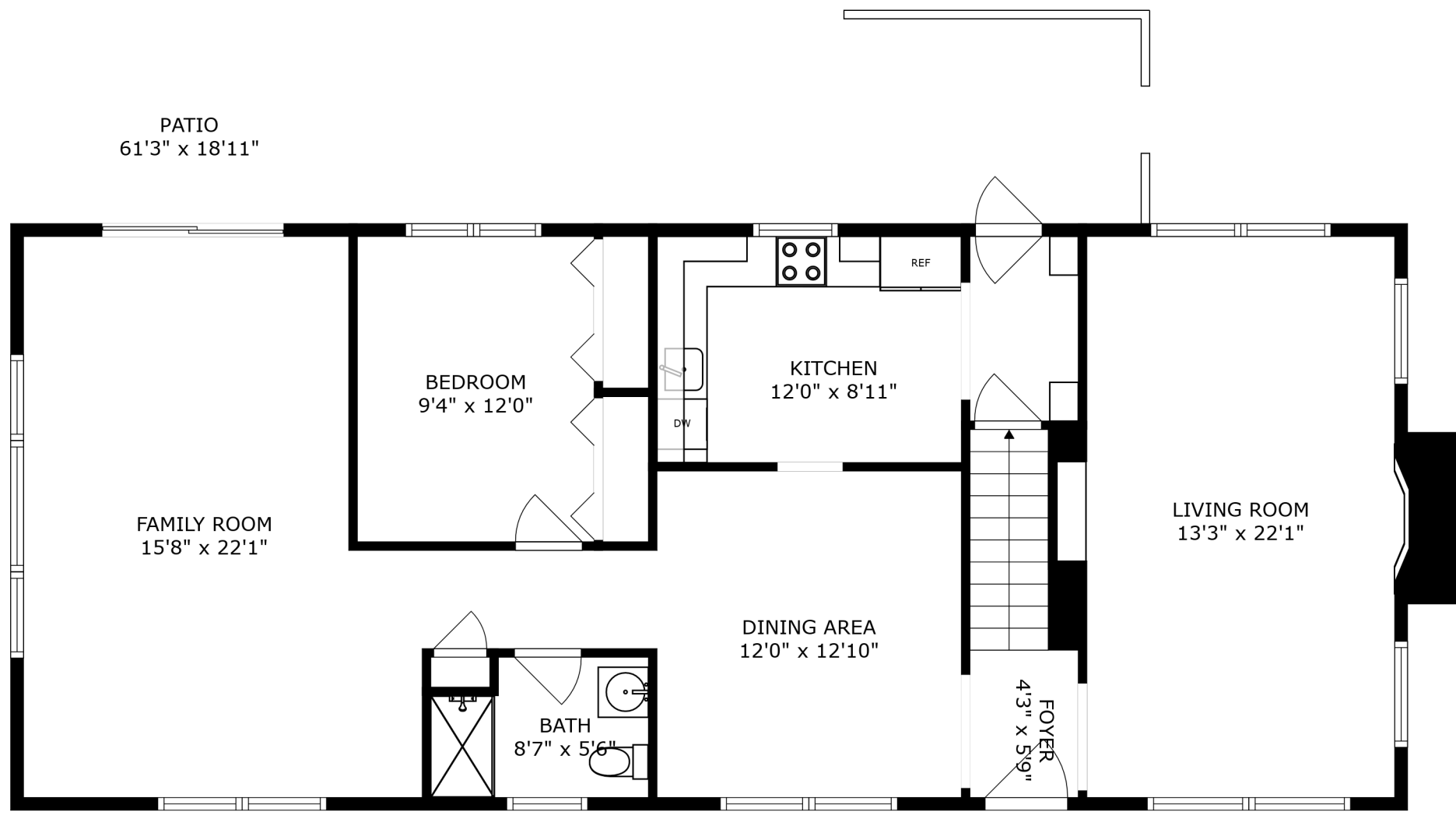
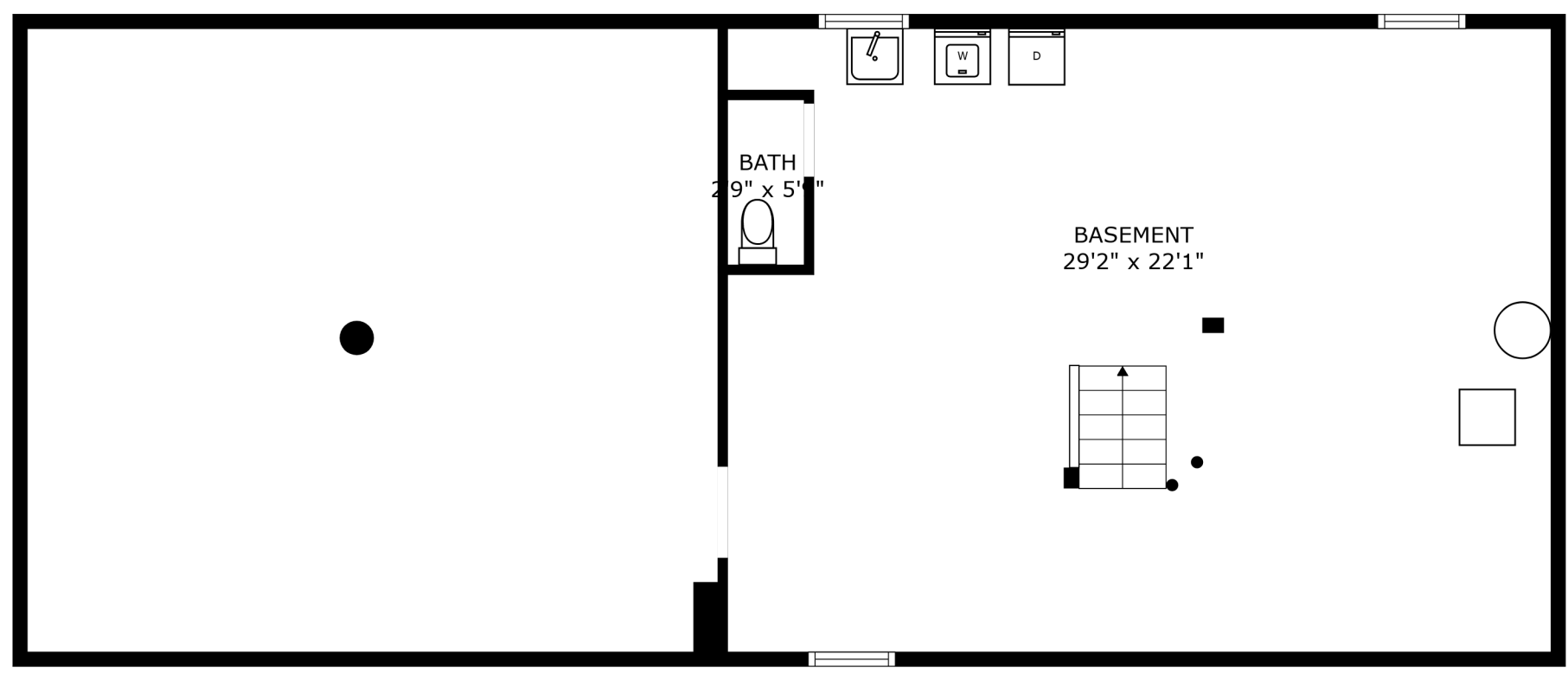


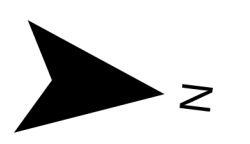
FLOOR 2



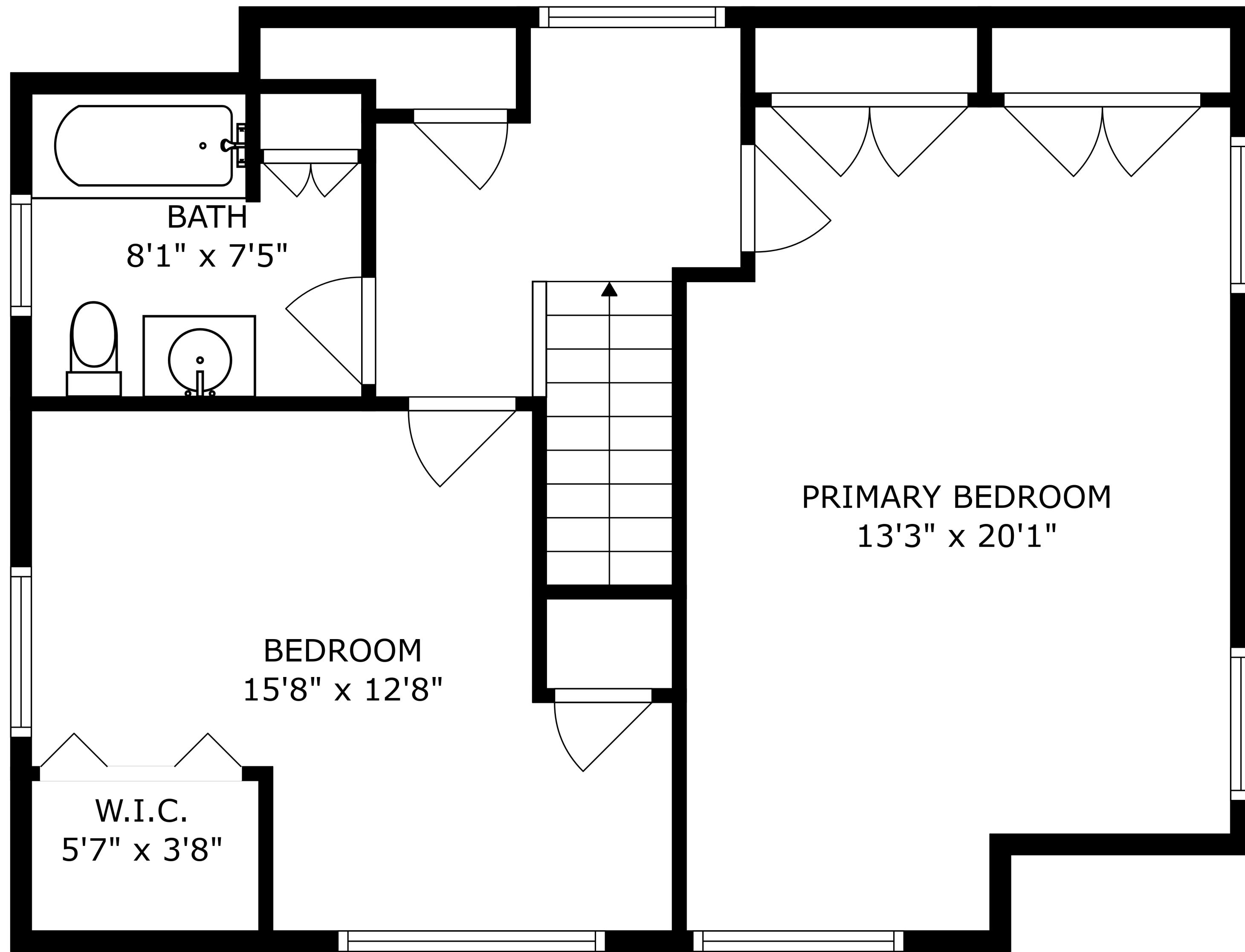
FLOOR 3



FLOOR 1



SIZES AND DIMENSIONS ARE APPROXIMATE, ACTUAL MAY VARY.



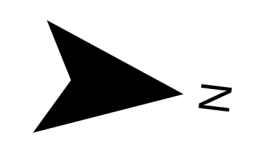
BATH  
8'1" x 7'5"

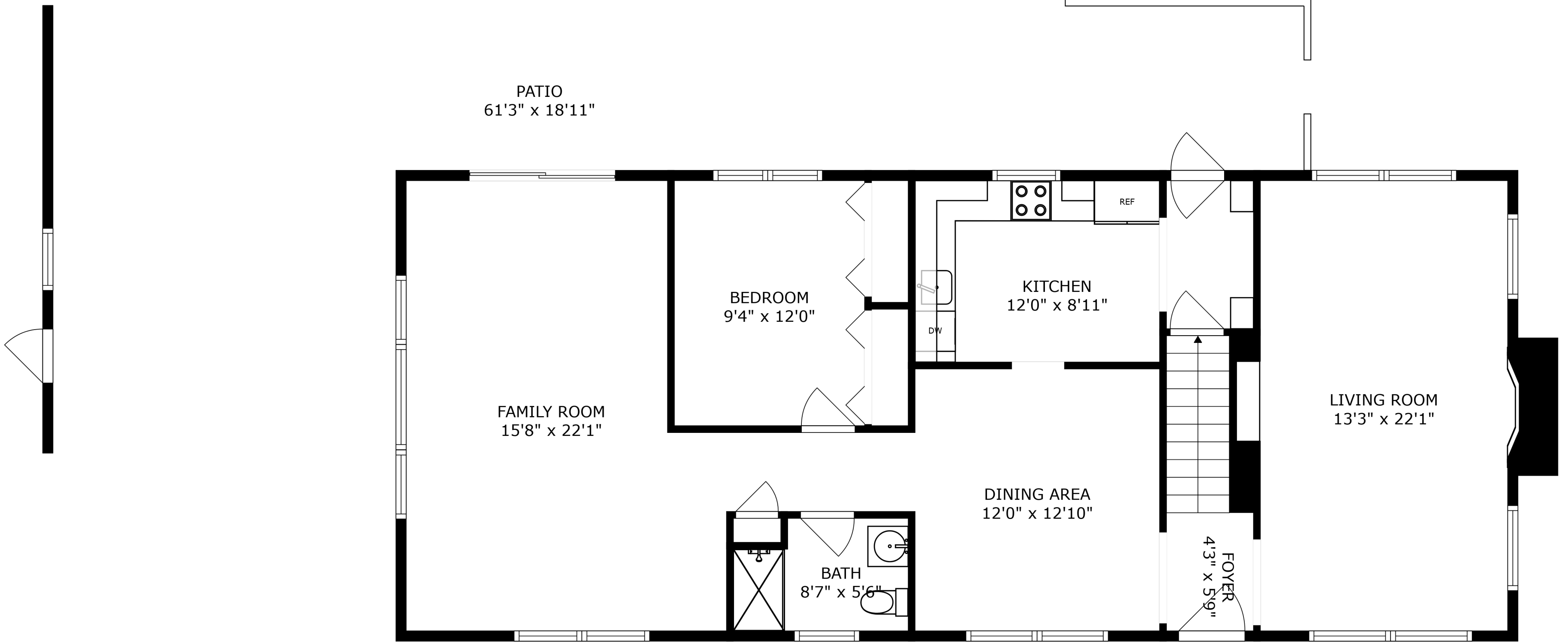
BEDROOM  
15'8" x 12'8"

W.I.C.  
5'7" x 3'8"

PRIMARY BEDROOM  
13'3" x 20'1"

SIZES AND DIMENSIONS ARE APPROXIMATE, ACTUAL MAY VARY.





PATIO  
61'3" x 18'11"

BEDROOM  
9'4" x 12'0"

KITCHEN  
12'0" x 8'11"

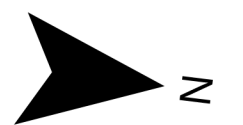
LIVING ROOM  
13'3" x 22'1"

FAMILY ROOM  
15'8" x 22'1"

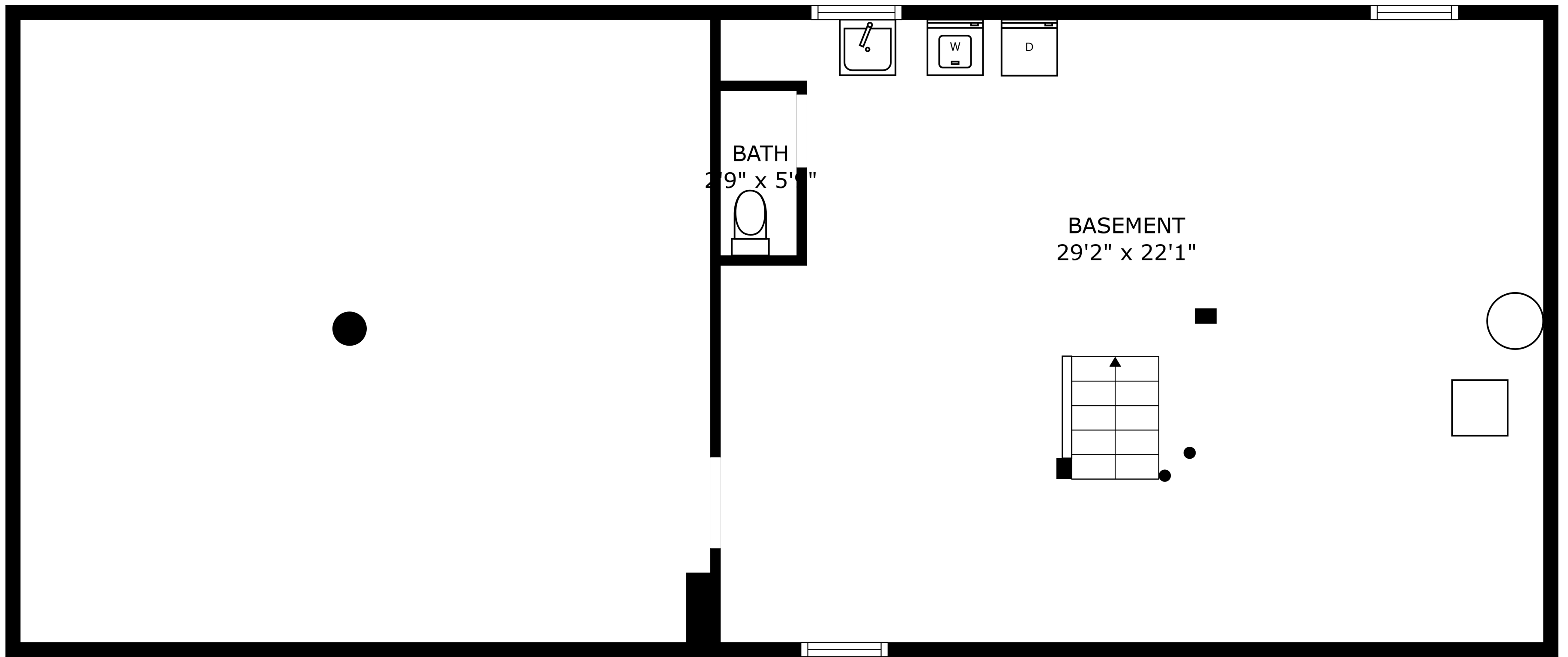
DINING AREA  
12'0" x 12'10"

BATH  
8'7" x 5'6"

FOYER  
4'3" x 5'9"



SIZES AND DIMENSIONS ARE APPROXIMATE, ACTUAL MAY VARY.



SIZES AND DIMENSIONS ARE APPROXIMATE, ACTUAL MAY VARY.

