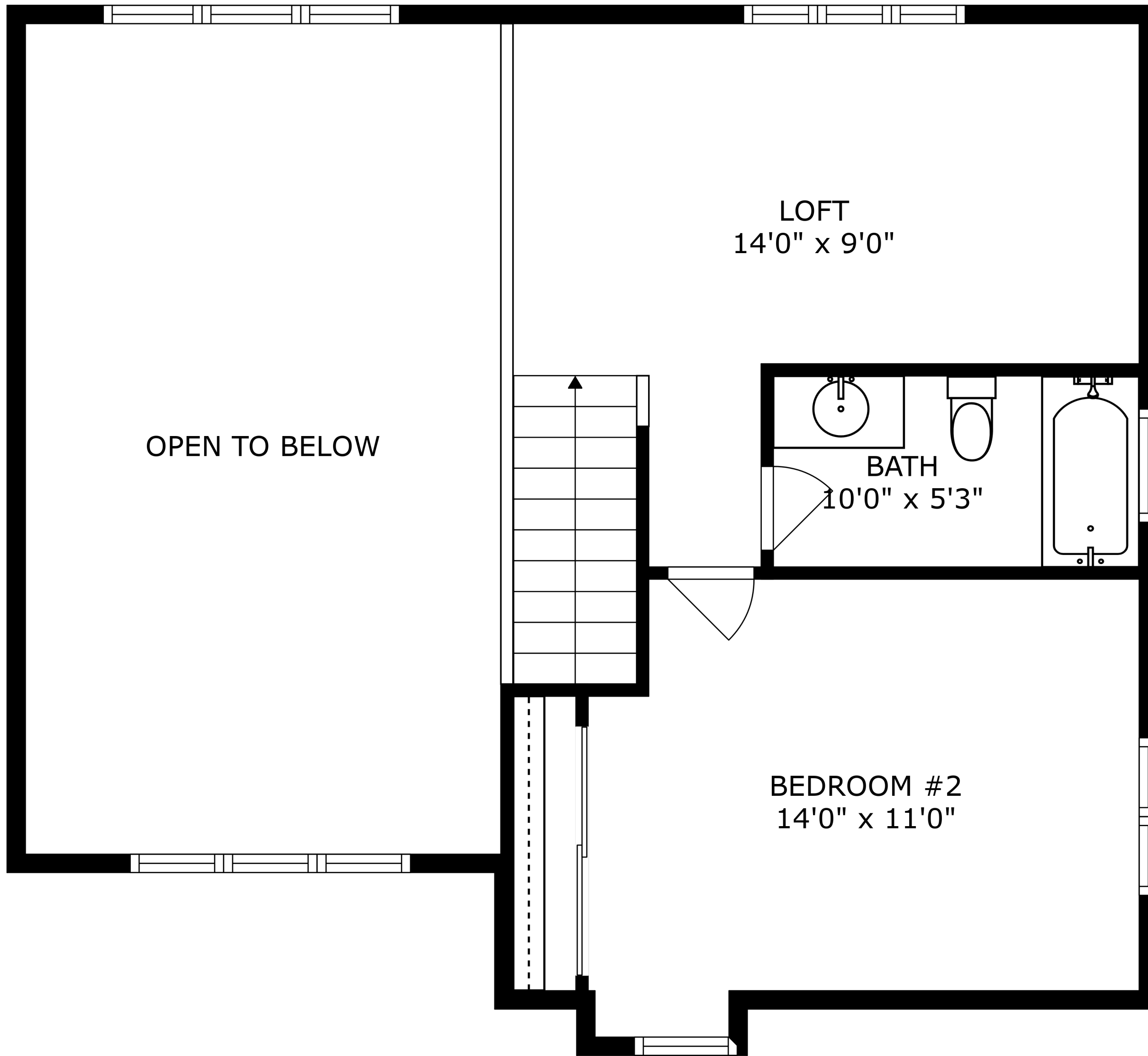


SIZES AND DIMENSIONS ARE APPROXIMATE, ACTUAL MAY VARY.





OPEN TO BELOW

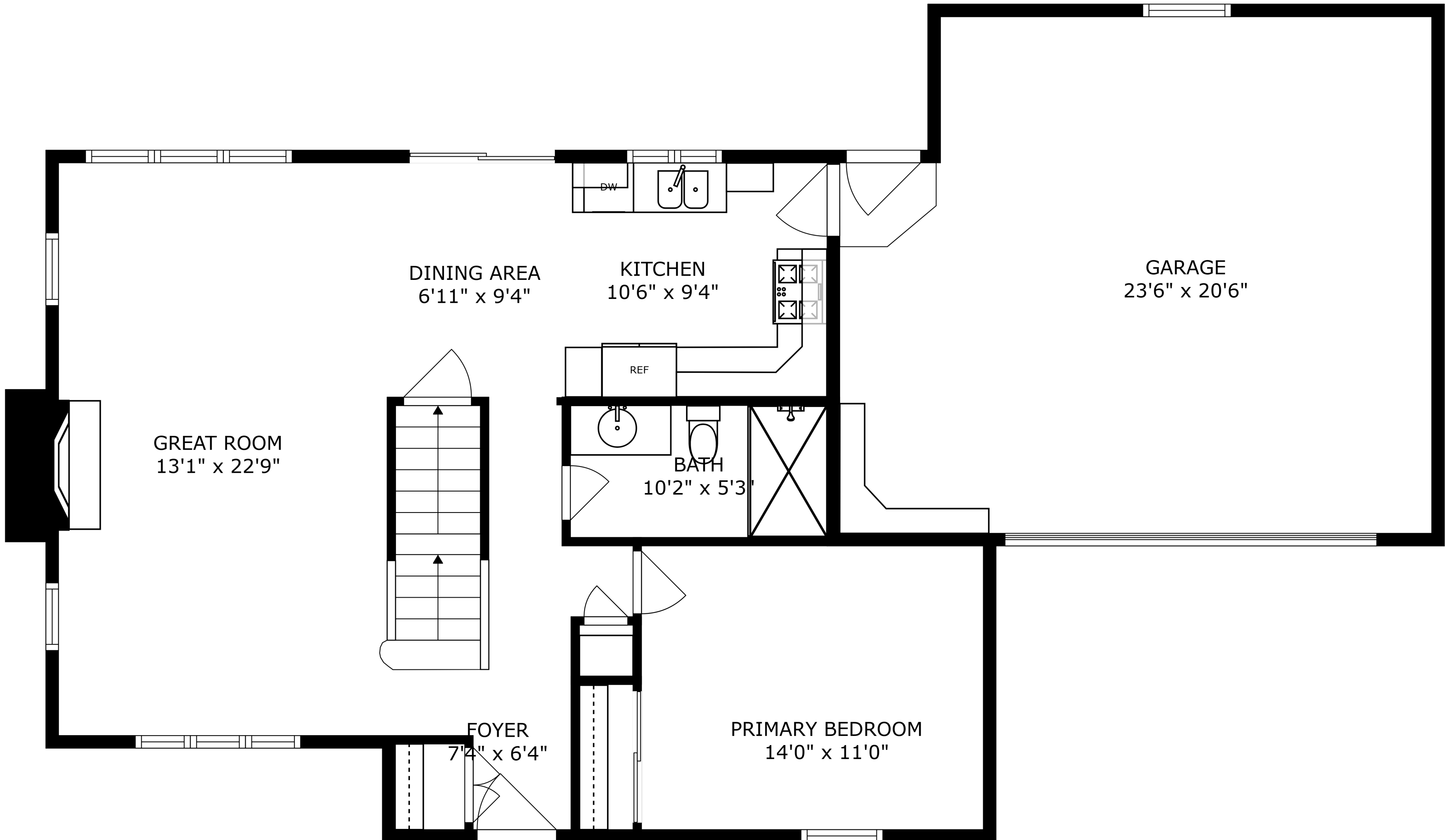
LOFT
14'0" x 9'0"

BATH
10'0" x 5'3"

BEDROOM #2
14'0" x 11'0"

SIZES AND DIMENSIONS ARE APPROXIMATE, ACTUAL MAY VARY.





GREAT ROOM
13'1" x 22'9"

DINING AREA
6'11" x 9'4"

KITCHEN
10'6" x 9'4"

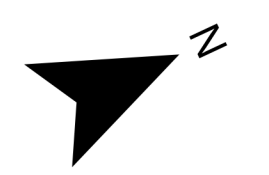
GARAGE
23'6" x 20'6"

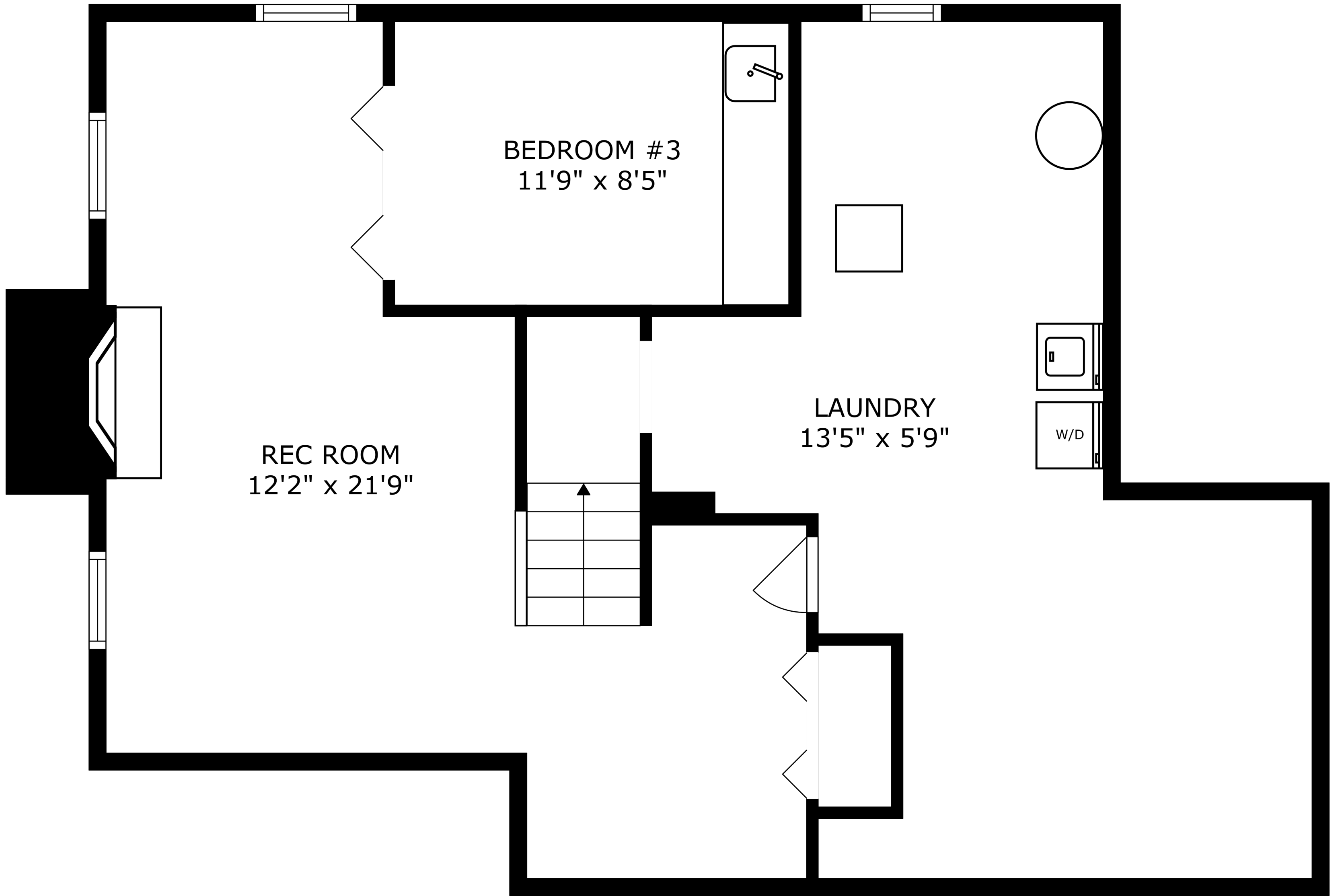
BATH
10'2" x 5'3"

FOYER
7'4" x 6'4"

PRIMARY BEDROOM
14'0" x 11'0"

SIZES AND DIMENSIONS ARE APPROXIMATE, ACTUAL MAY VARY.





SIZES AND DIMENSIONS ARE APPROXIMATE, ACTUAL MAY VARY.

