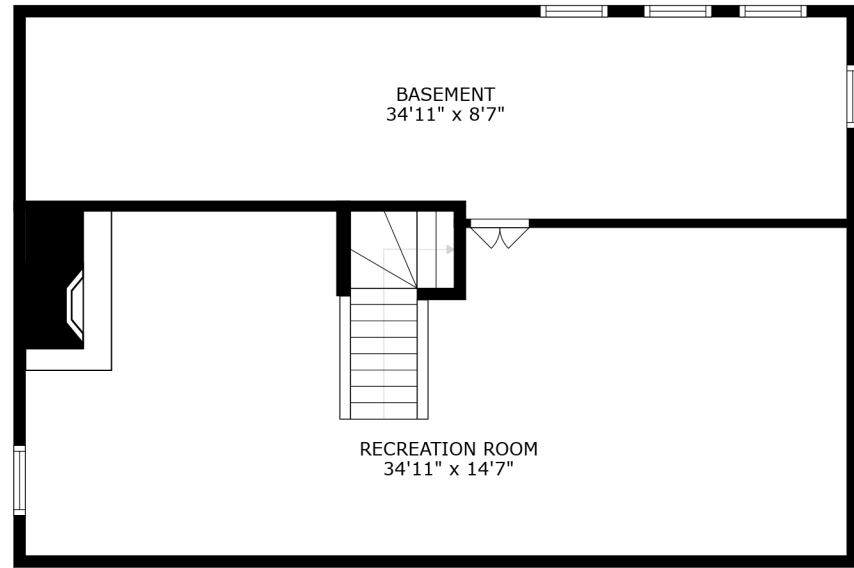
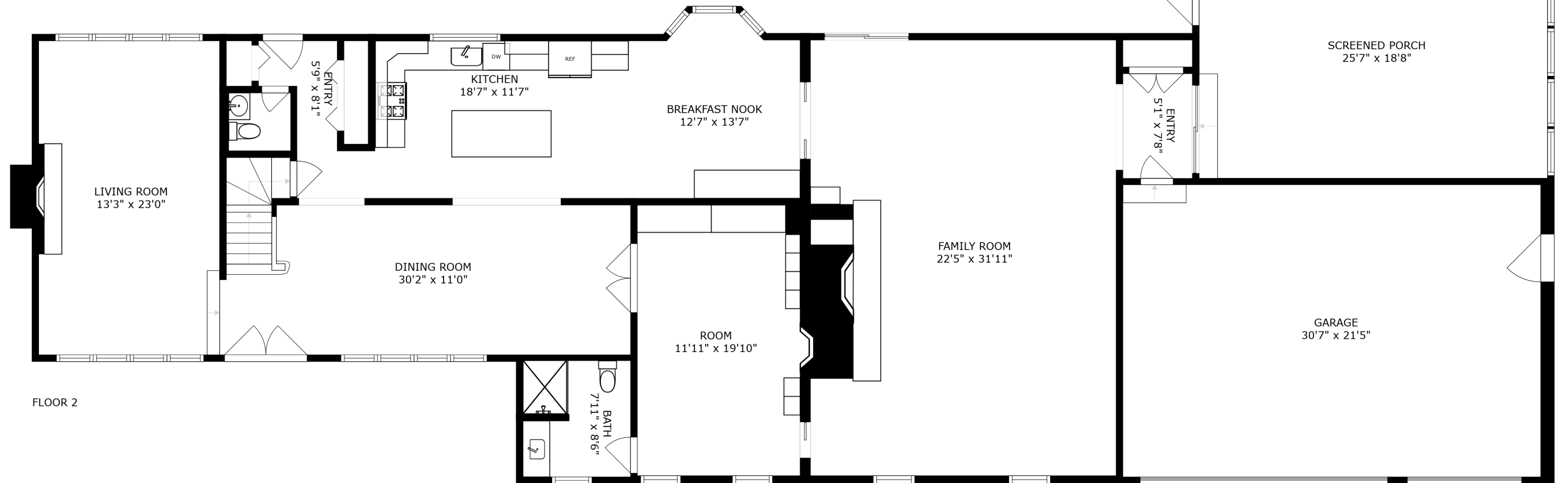


FLOOR 3

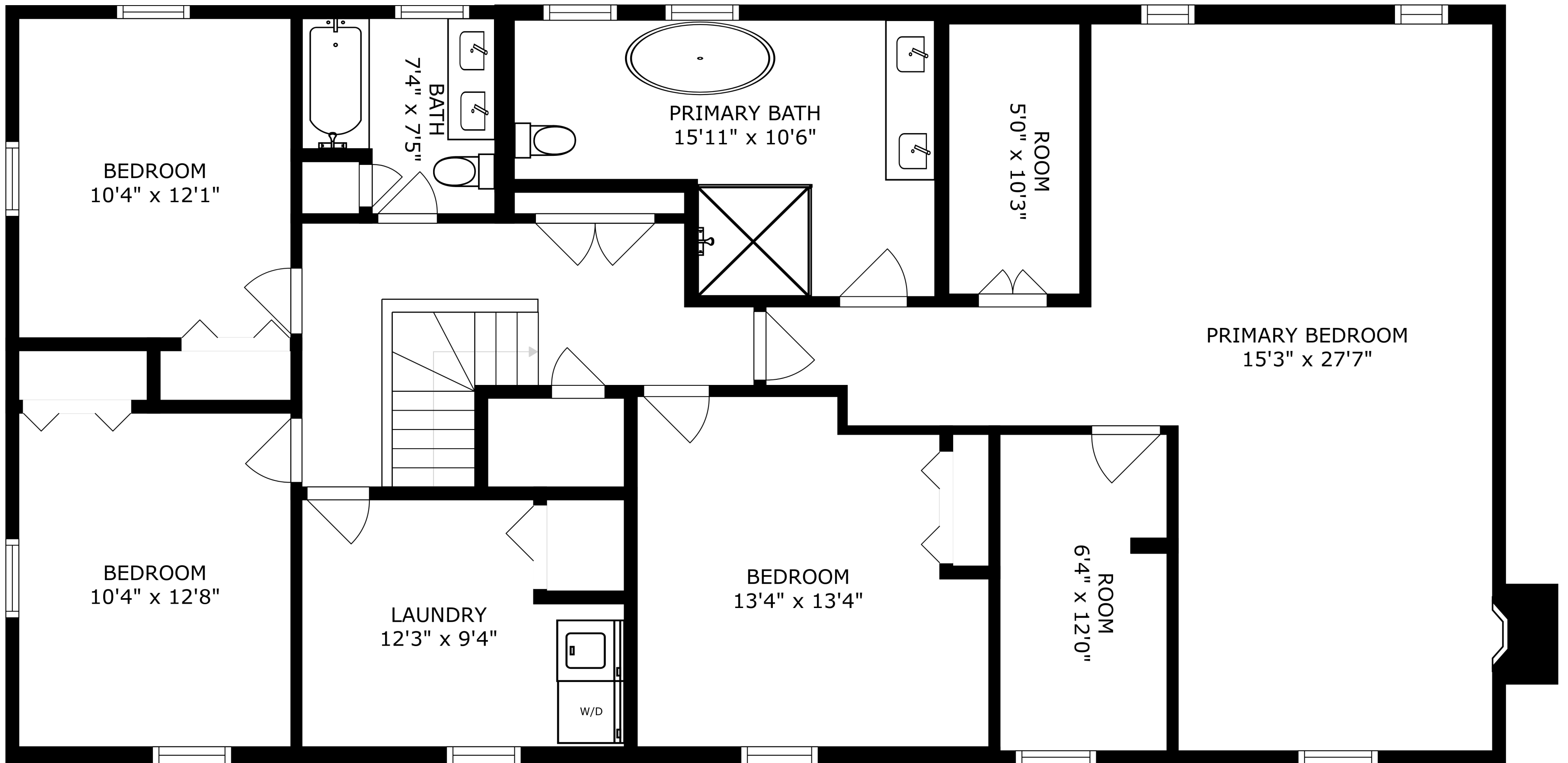


FLOOR 1

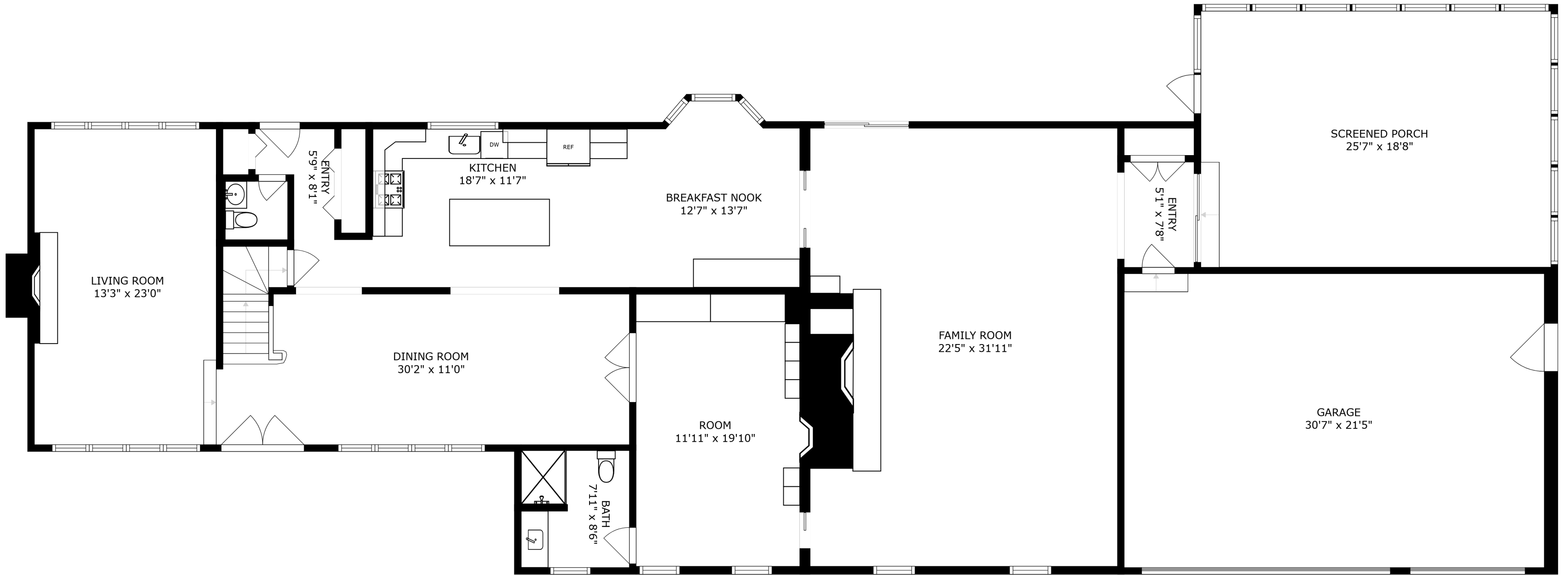


FLOOR 2

SIZES AND DIMENSIONS ARE APPROXIMATE, ACTUAL MAY VARY.



SIZES AND DIMENSIONS ARE APPROXIMATE, ACTUAL MAY VARY.



SIZES AND DIMENSIONS ARE APPROXIMATE, ACTUAL MAY VARY.



A floor plan diagram showing two rooms. The top room is labeled 'BASEMENT' with dimensions '34'11" x 8'7"'. The bottom room is labeled 'RECREATION ROOM' with dimensions '34'11" x 14'7"'. A staircase is located between the two rooms, with an arrow pointing from the recreation room to the basement. The basement has a door on the left wall. The recreation room has a door on the left wall and a window on the right wall. The walls are represented by thick black lines. The staircase is shown with horizontal lines for steps and a vertical line for the railing. The door is shown with a simple outline and a handle. The window is shown with a simple outline and a handle.

BASEMENT
34'11" x 8'7"

RECREATION ROOM
34'11" x 14'7"