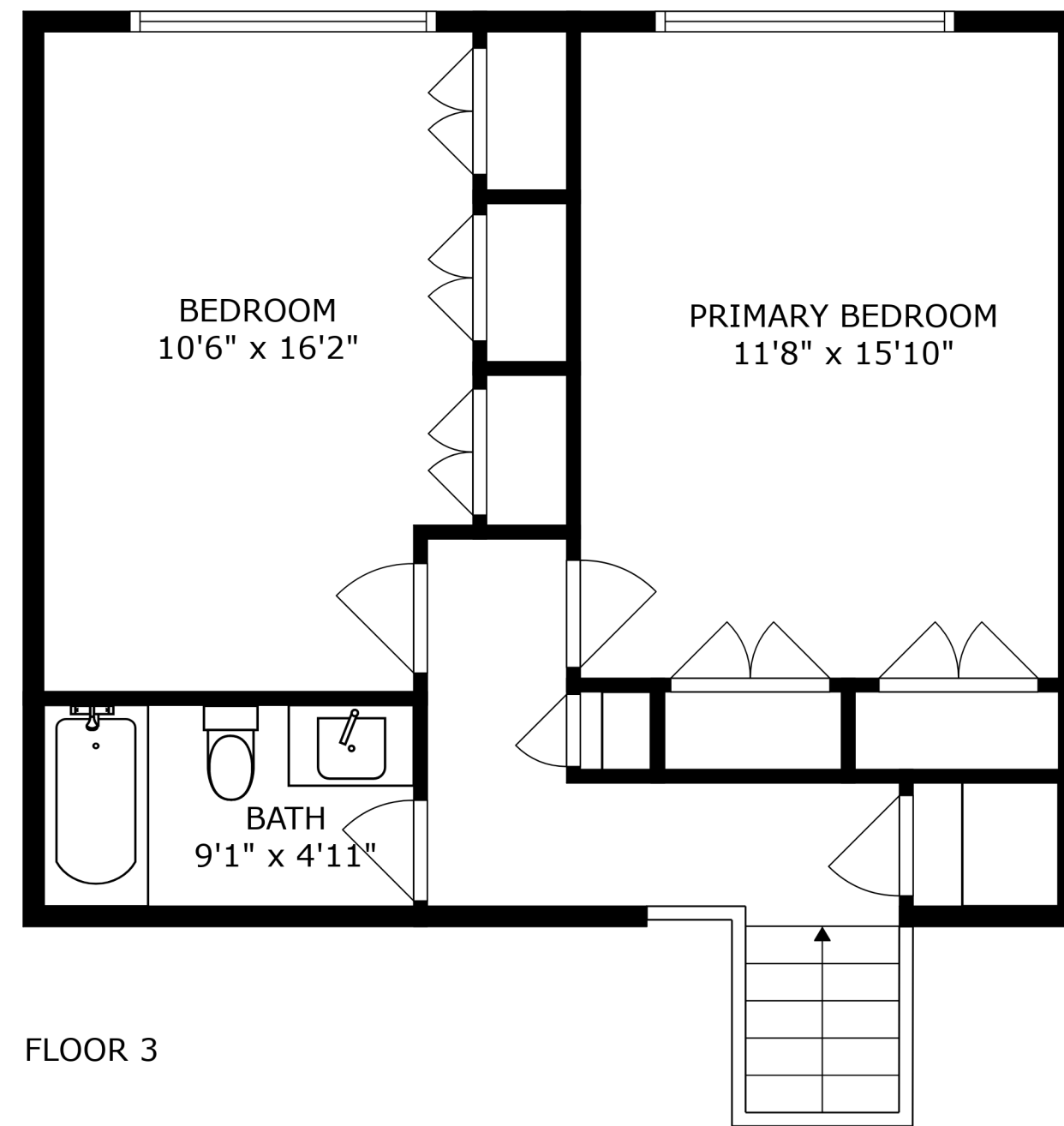
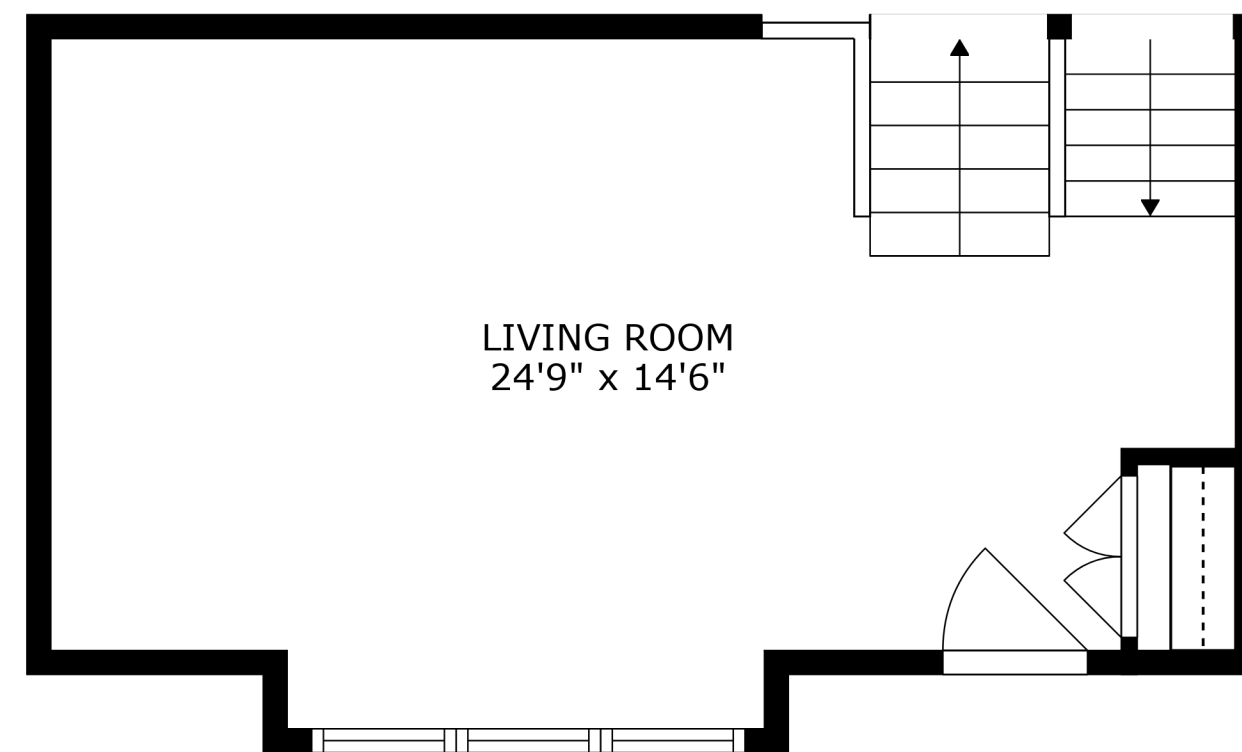


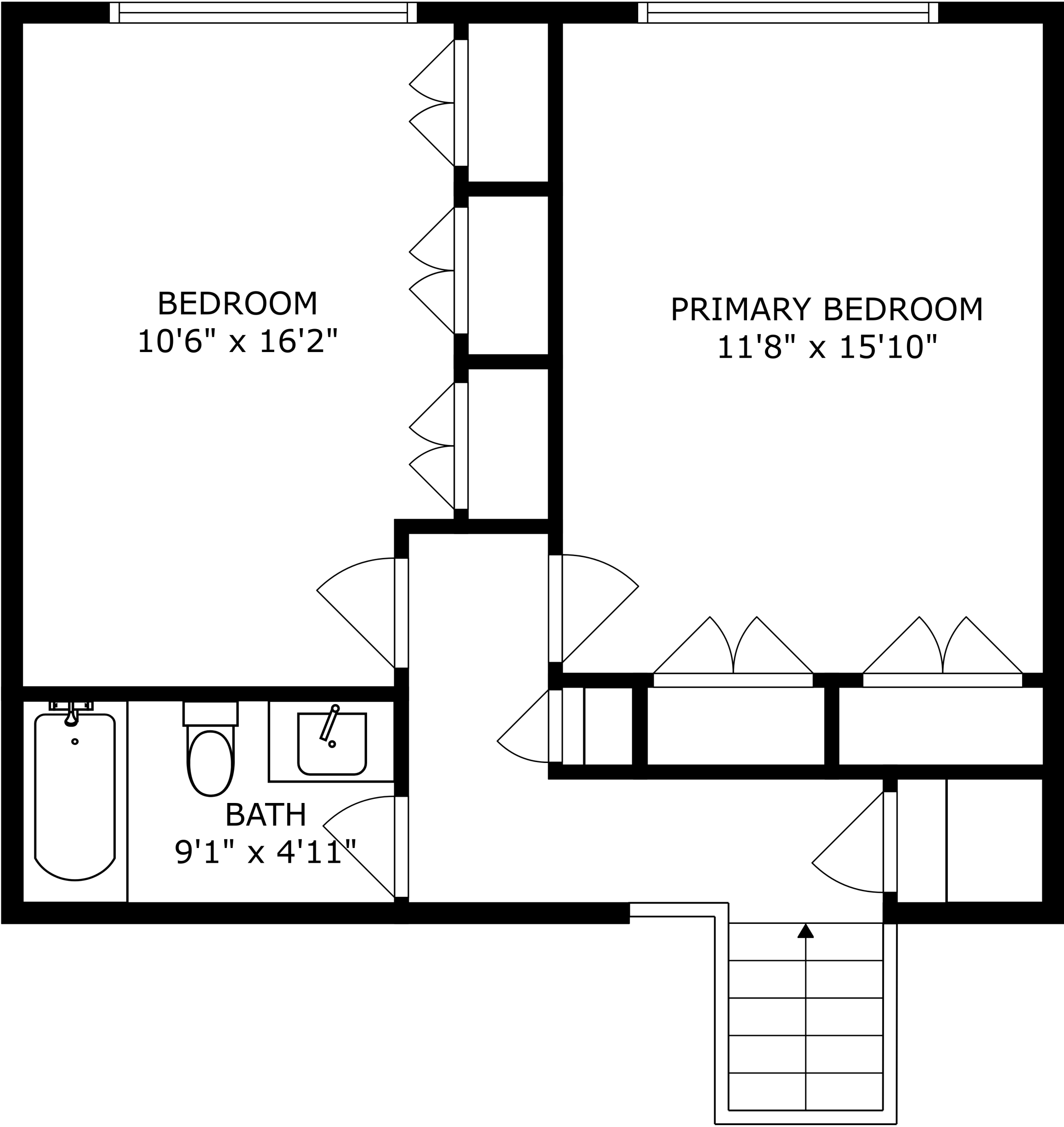
FLOOR 1



FLOOR 3



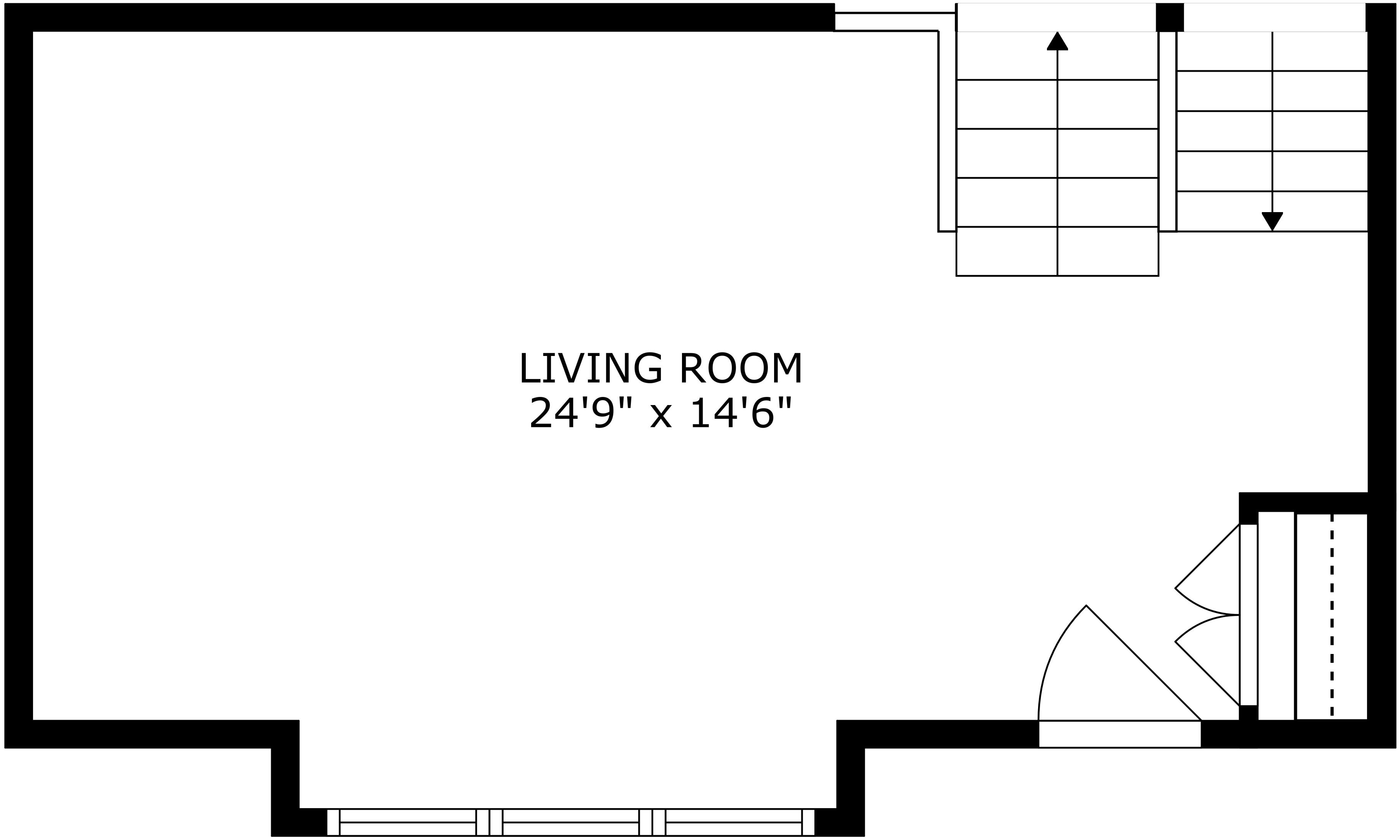
FLOOR 2



BEDROOM
10'6" x 16'2"

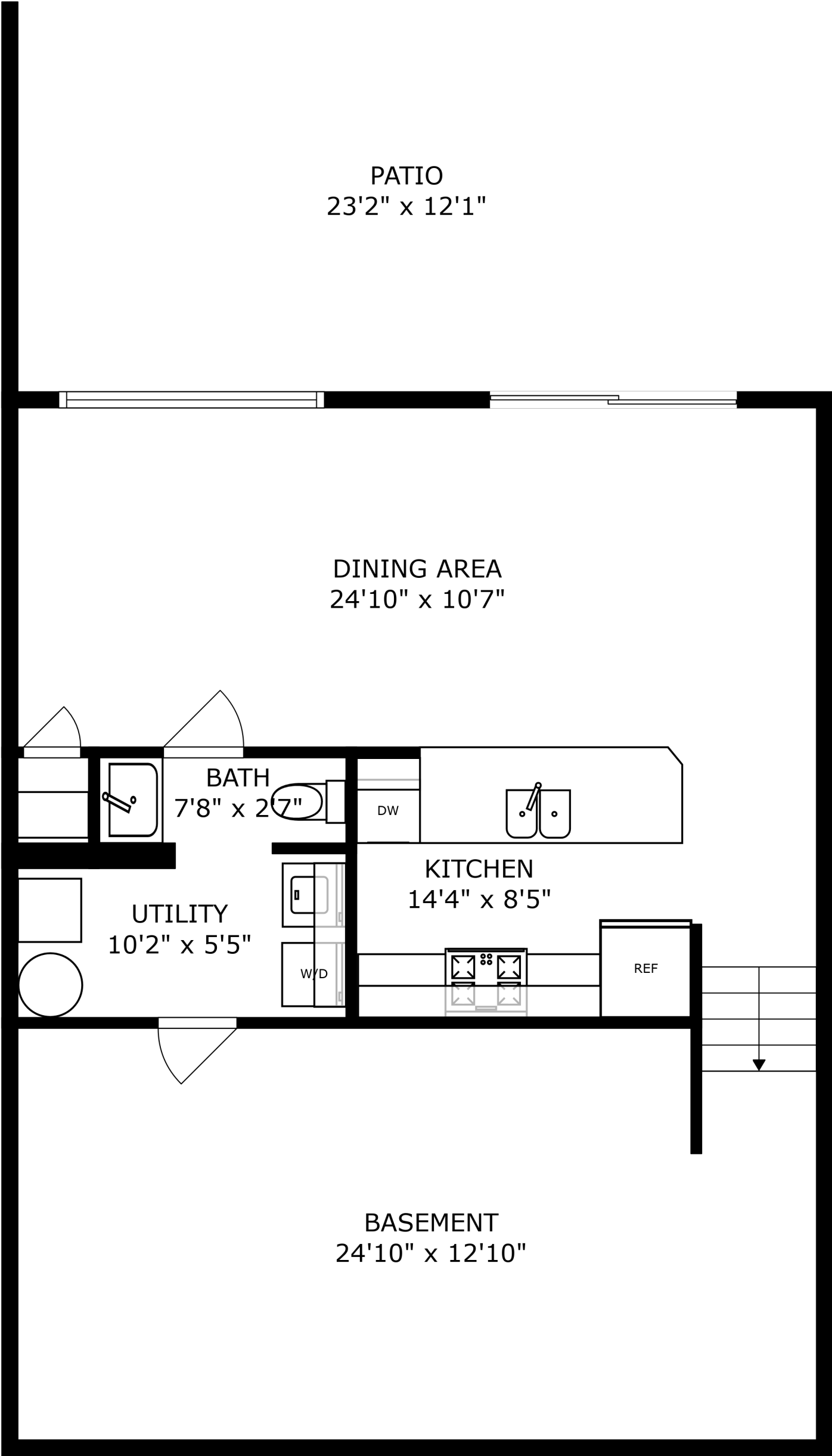
PRIMARY BEDROOM
11'8" x 15'10"

BATH
9'1" x 4'11"



LIVING ROOM
24'9" x 14'6"

SIZES AND DIMENSIONS ARE APPROXIMATE, ACTUAL MAY VARY.



PATIO
23'2" x 12'1"

DINING AREA
24'10" x 10'7"

BATH
7'8" x 2'7"

UTILITY
10'2" x 5'5"

KITCHEN
14'4" x 8'5"

BASEMENT
24'10" x 12'10"

SIZES AND DIMENSIONS ARE APPROXIMATE, ACTUAL MAY VARY.