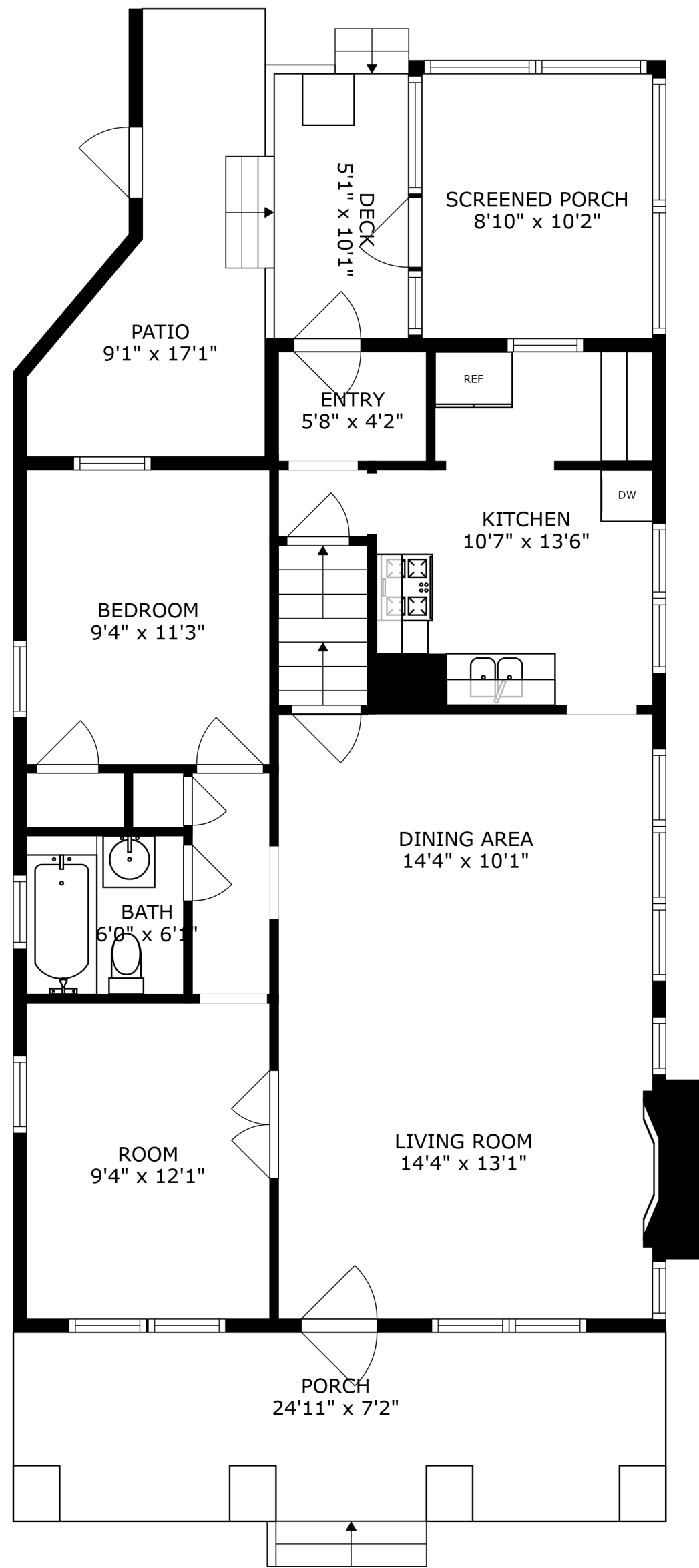
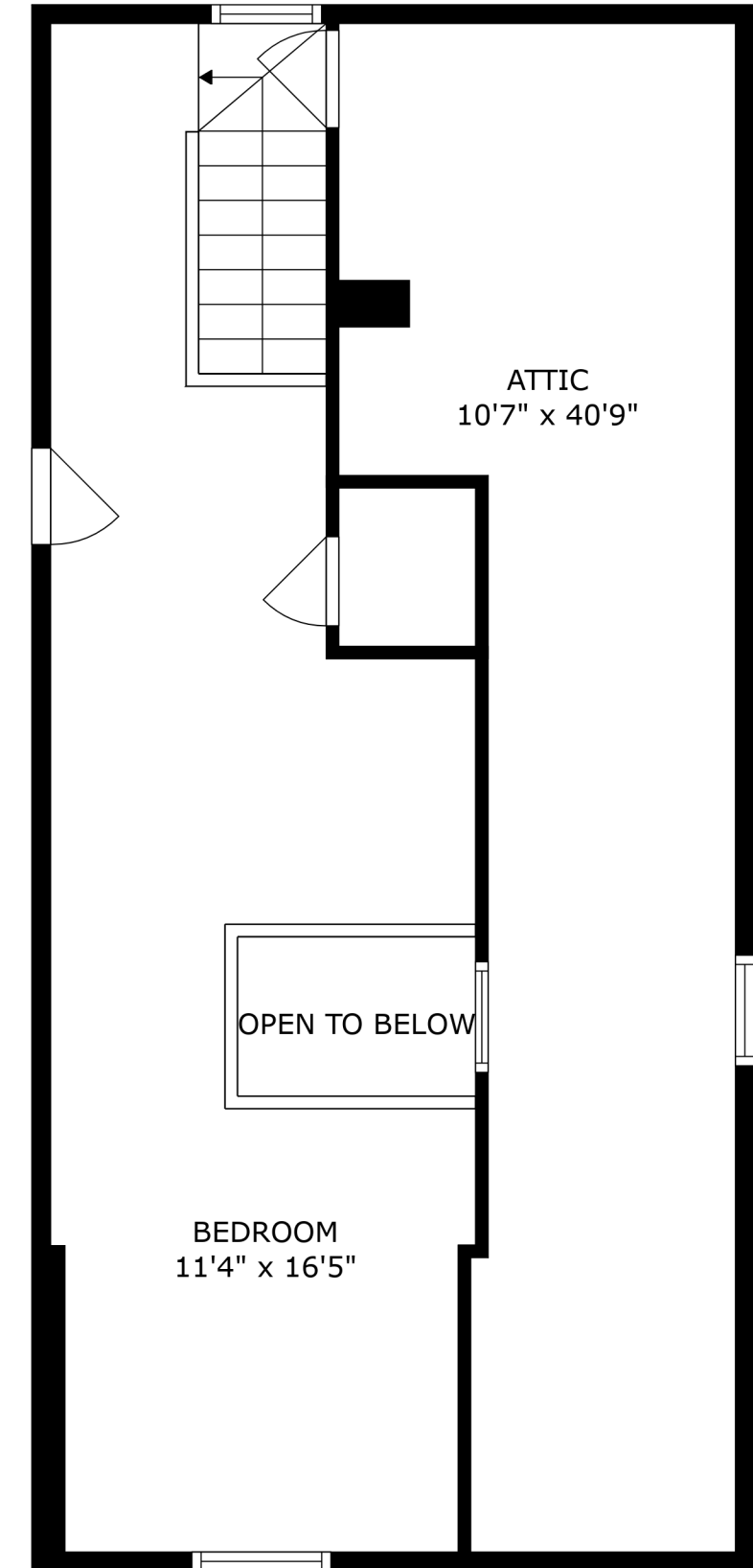


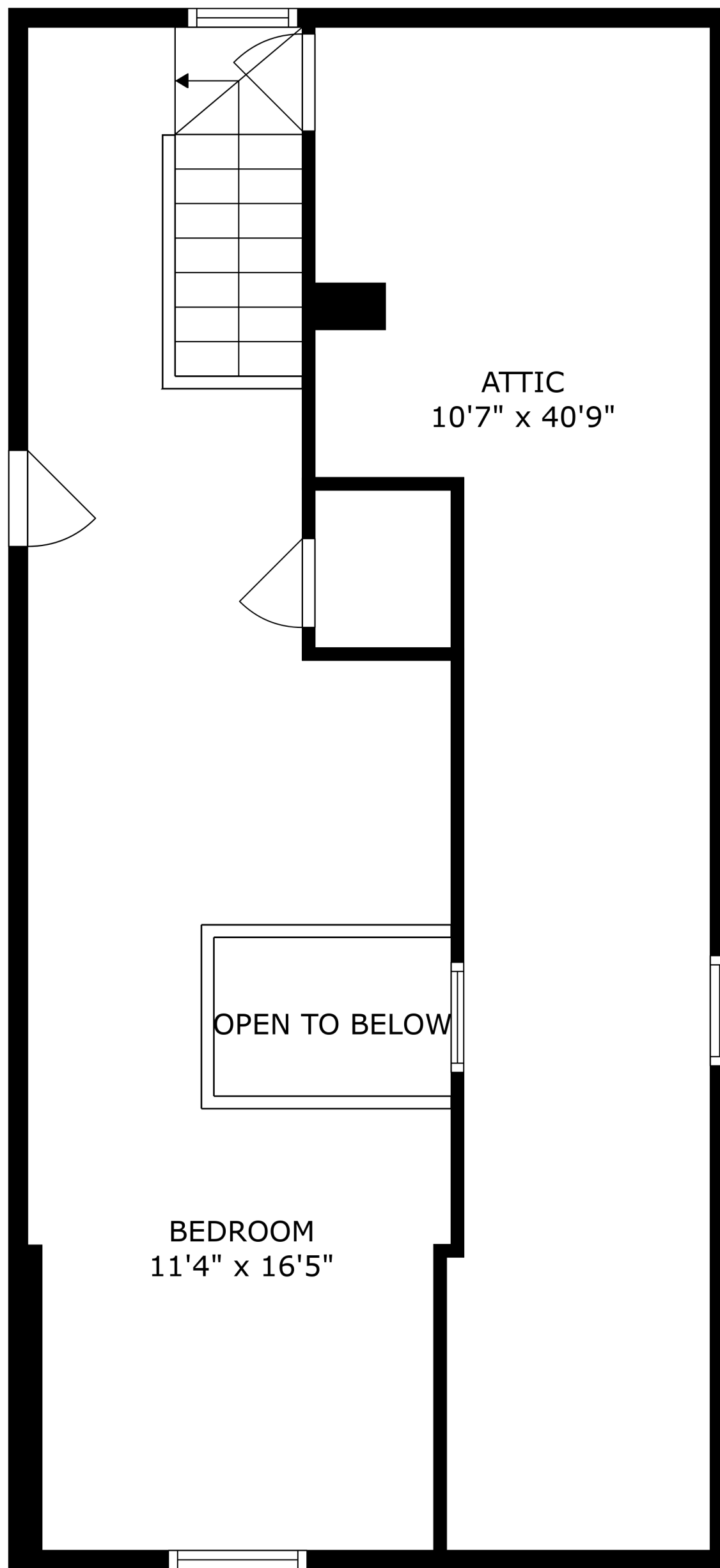
FLOOR 1



FLOOR 2



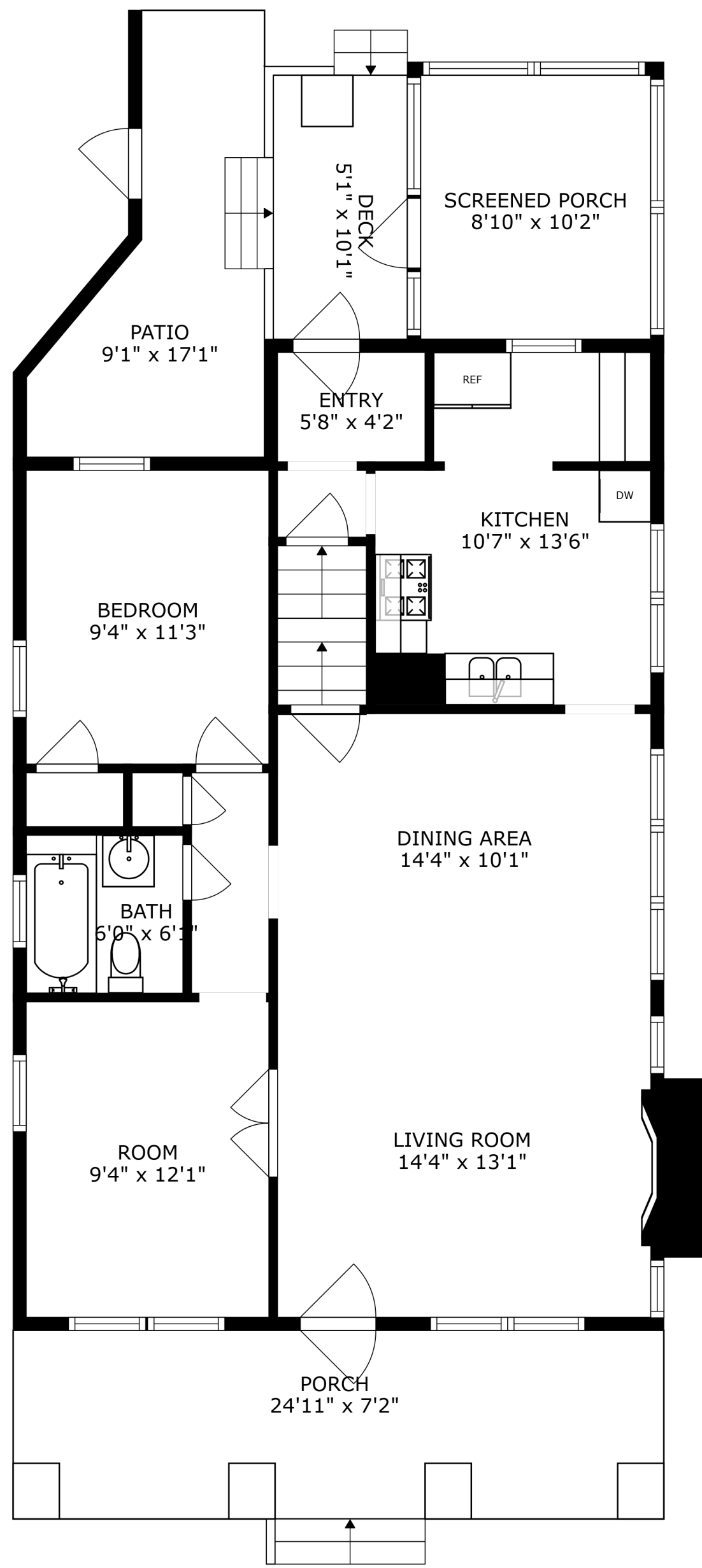
FLOOR 3



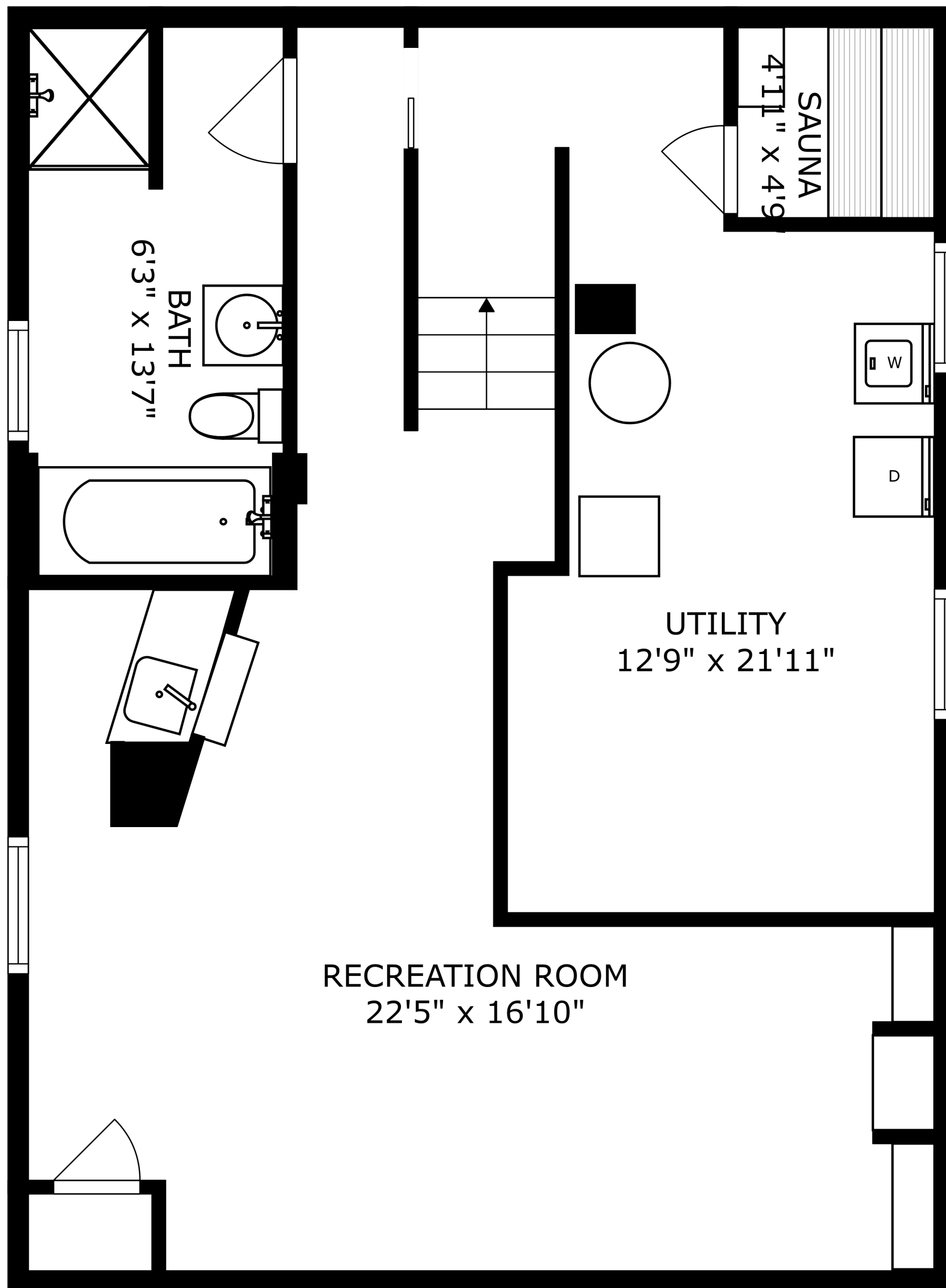
ATTIC
10'7" x 40'9"

OPEN TO BELOW

BEDROOM
11'4" x 16'5"



SIZES AND DIMENSIONS ARE APPROXIMATE, ACTUAL MAY VARY.



SIZES AND DIMENSIONS ARE APPROXIMATE, ACTUAL MAY VARY.