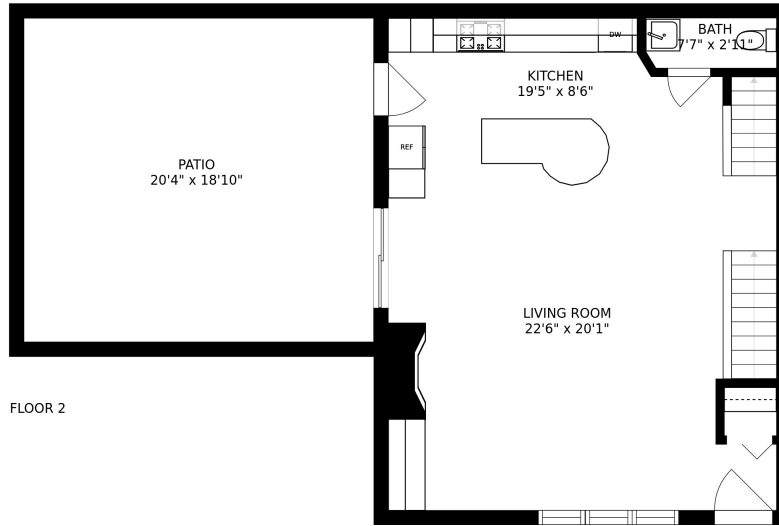
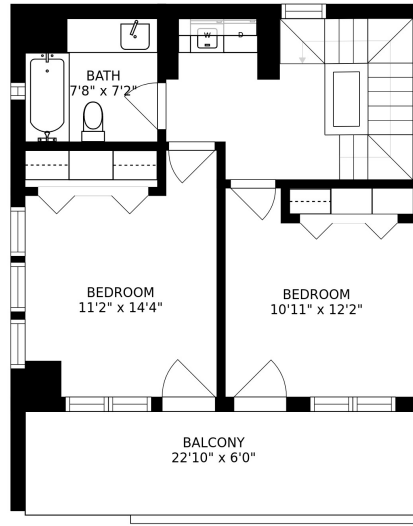


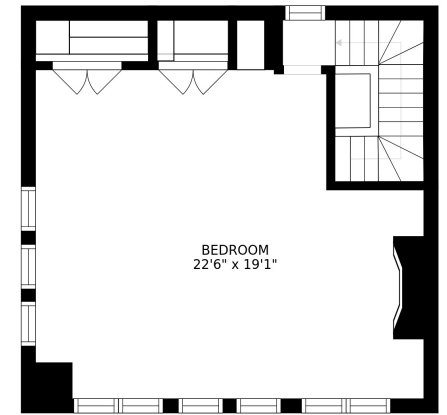
FLOOR 1



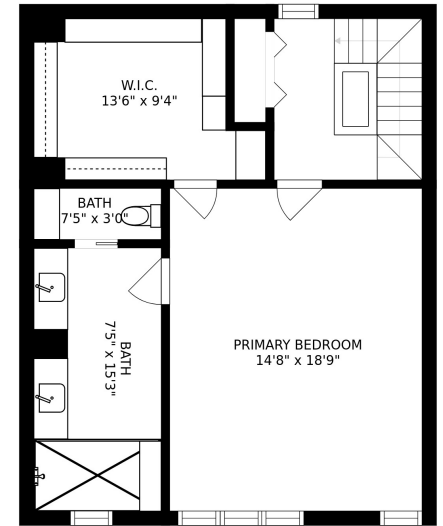
FLOOR 2



FLOOR 4

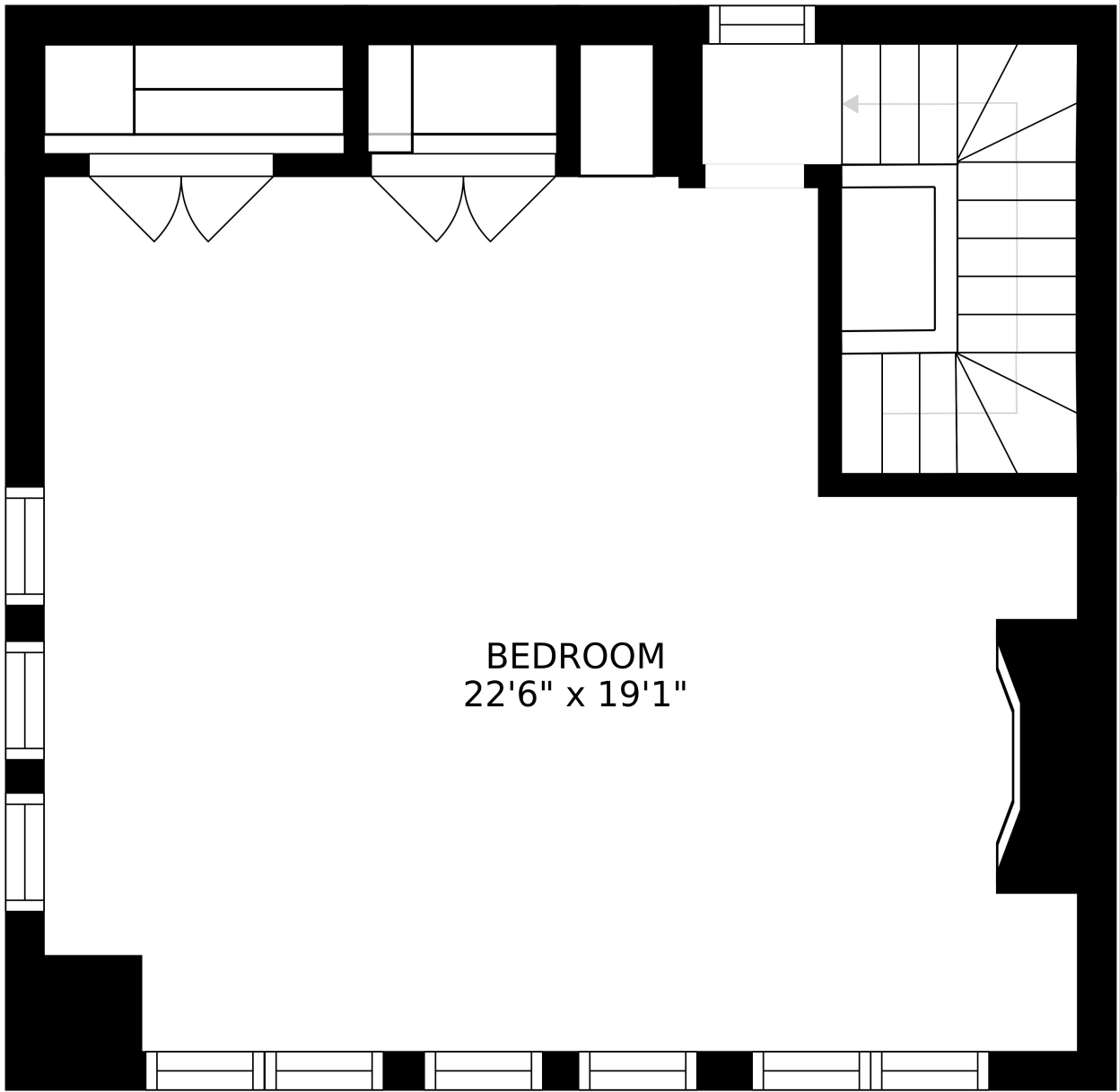


FLOOR 5

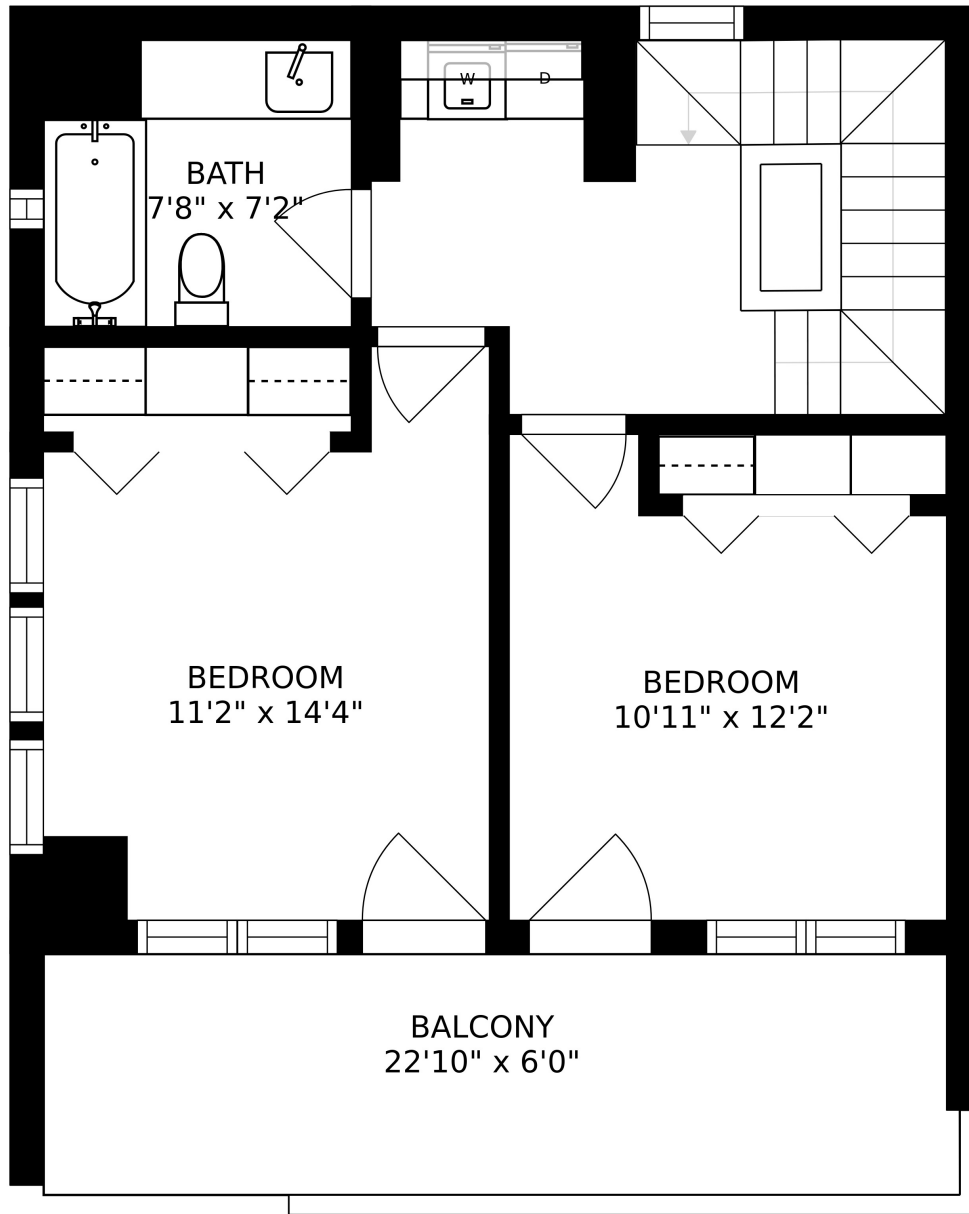


FLOOR 3

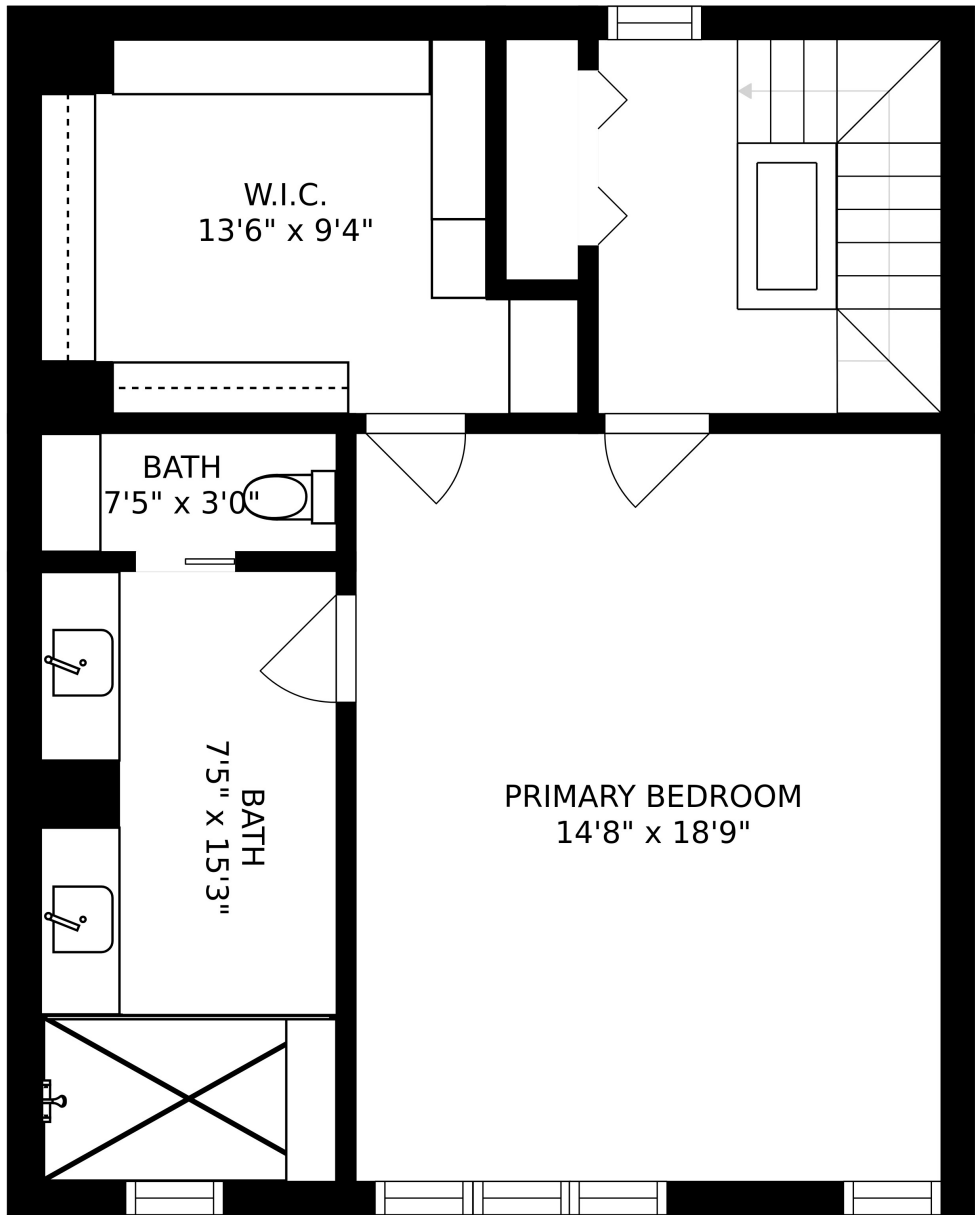
SIZES AND DIMENSIONS ARE APPROXIMATE, ACTUAL MAY VARY.



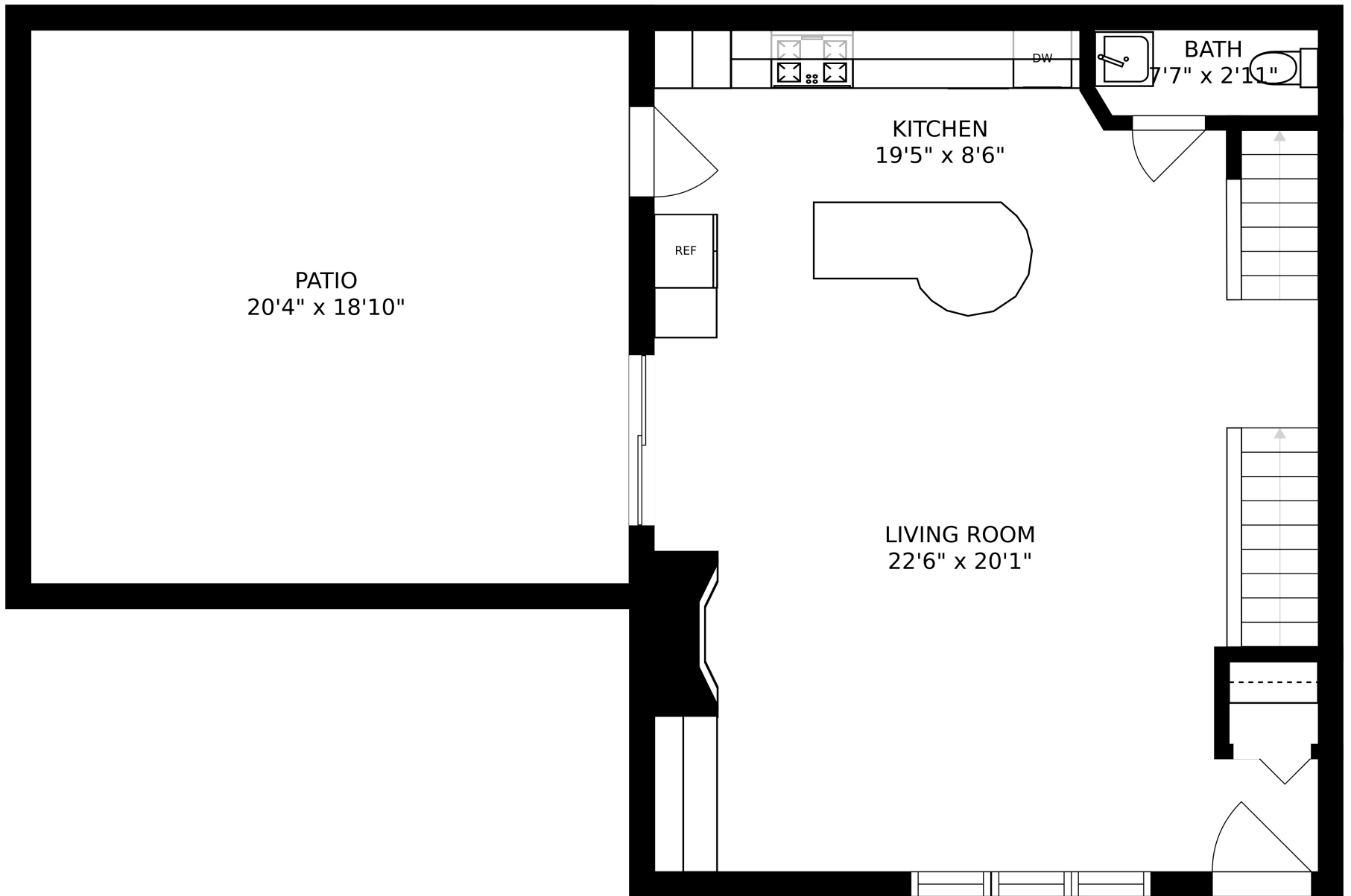
SIZES AND DIMENSIONS ARE APPROXIMATE, ACTUAL MAY VARY.



SIZES AND DIMENSIONS ARE APPROXIMATE, ACTUAL MAY VARY.



SIZES AND DIMENSIONS ARE APPROXIMATE, ACTUAL MAY VARY.



PATIO  
20'4" x 18'10"

KITCHEN  
19'5" x 8'6"

LIVING ROOM  
22'6" x 20'1"

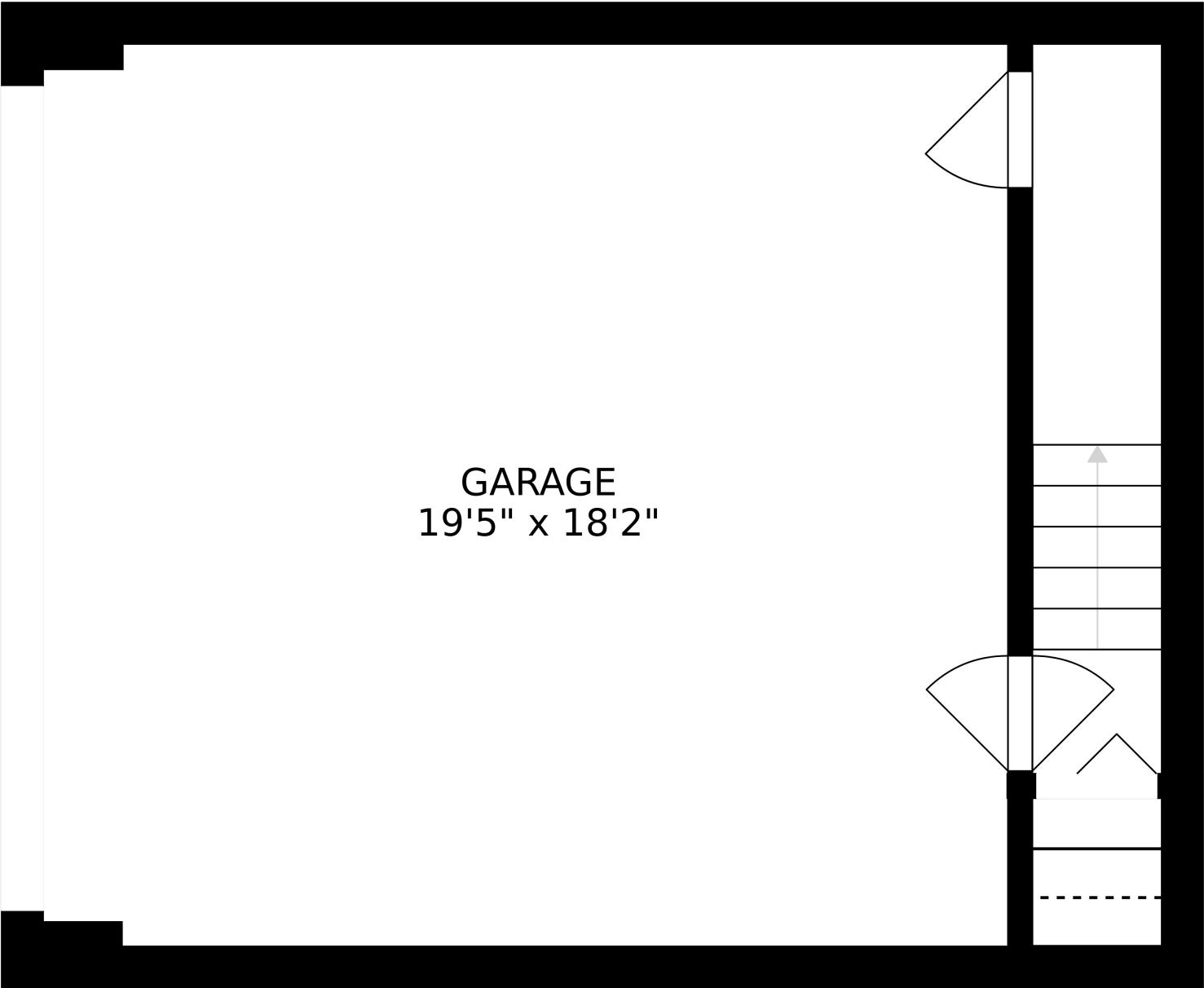
BATH

7'7" x 2'11"

REF

DW

SIZES AND DIMENSIONS ARE APPROXIMATE, ACTUAL MAY VARY.



SIZES AND DIMENSIONS ARE APPROXIMATE, ACTUAL MAY VARY.