

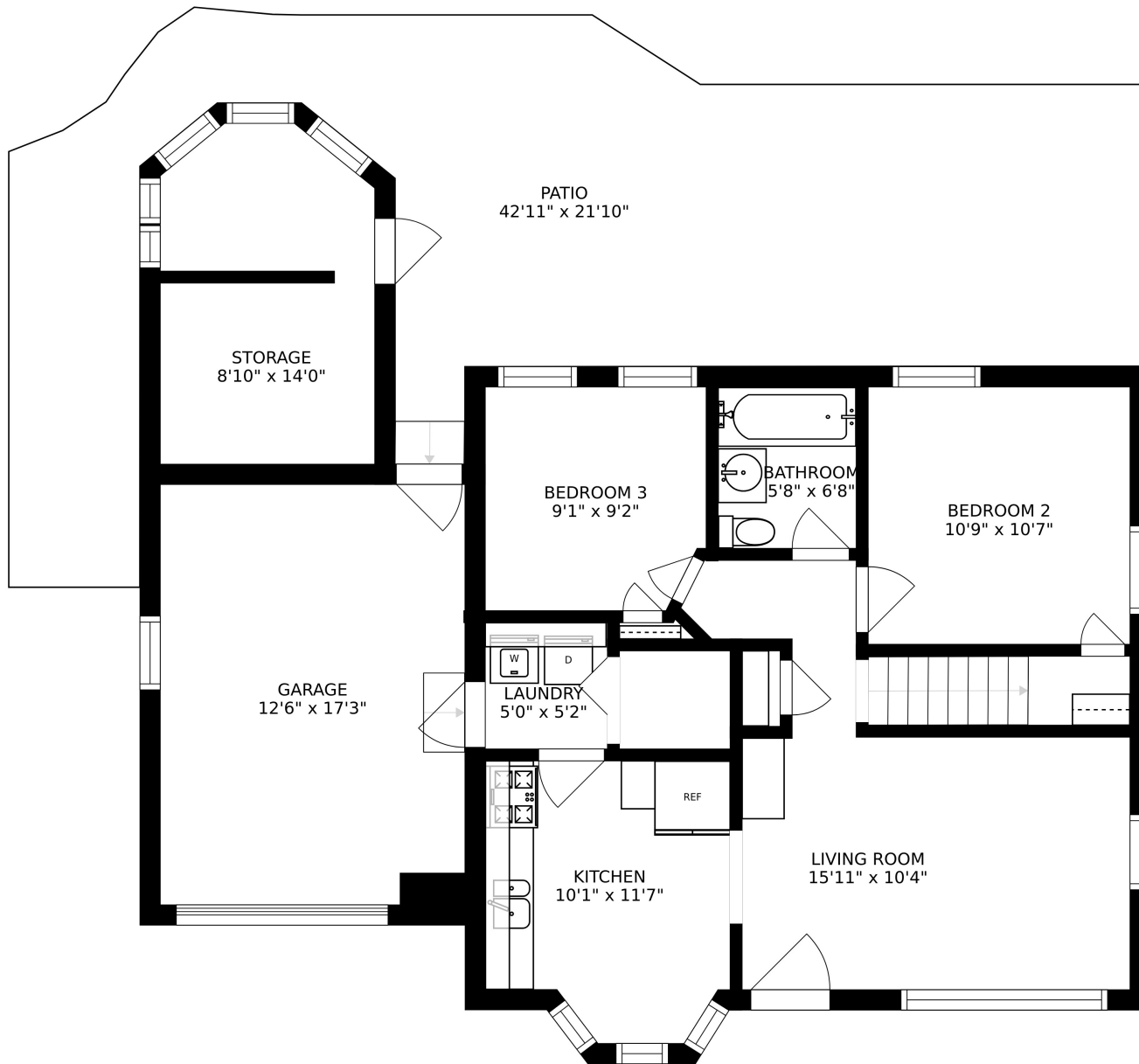
SIZES AND DIMENSIONS ARE APPROXIMATE, ACTUAL MAY VARY.

A floor plan showing a primary bedroom and a walk-in closet. The primary bedroom is on the left, measuring 26'6" x 15'10", and contains a black square representing a bed. The walk-in closet is on the right, measuring 10'0" x 6'5", and contains a closet system with a sliding door. The room is enclosed by a thick black border representing the walls. There are windows on the left and right walls, and a door on the right wall leading to the closet.

PRIMARY BEDROOM
26'6" x 15'10"

WALK IN CLOSET
10'0" x 6'5"

SIZES AND DIMENSIONS ARE APPROXIMATE, ACTUAL MAY VARY.



SIZES AND DIMENSIONS ARE APPROXIMATE, ACTUAL MAY VARY.