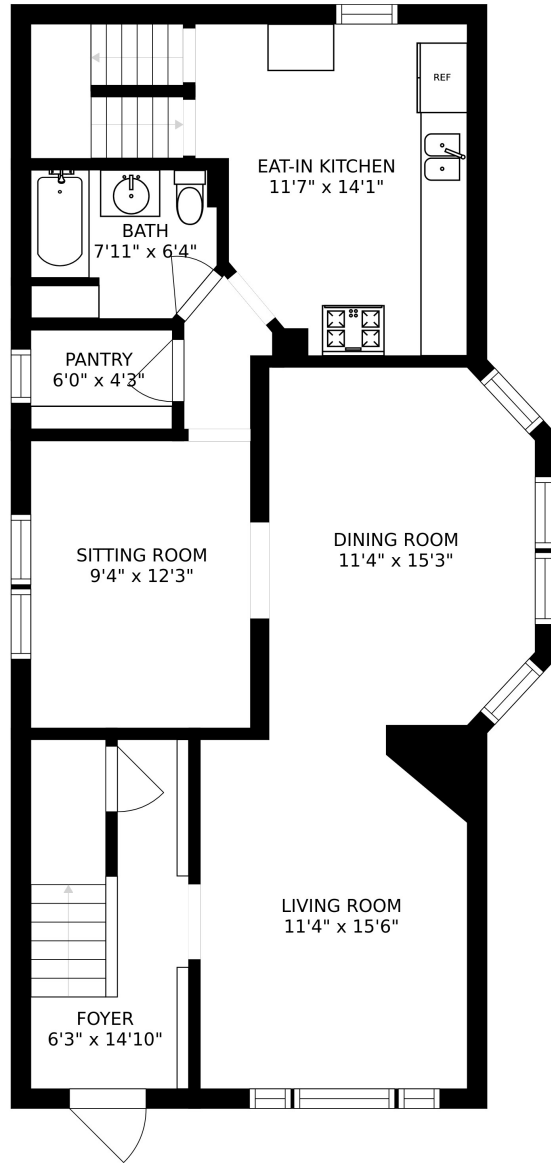


BASEMENT  
17'7" x 44'10"

FLOOR 1



EAT-IN KITCHEN  
11'7" x 14'1"

BATH  
7'11" x 6'4"

PANTRY  
6'0" x 4'3"

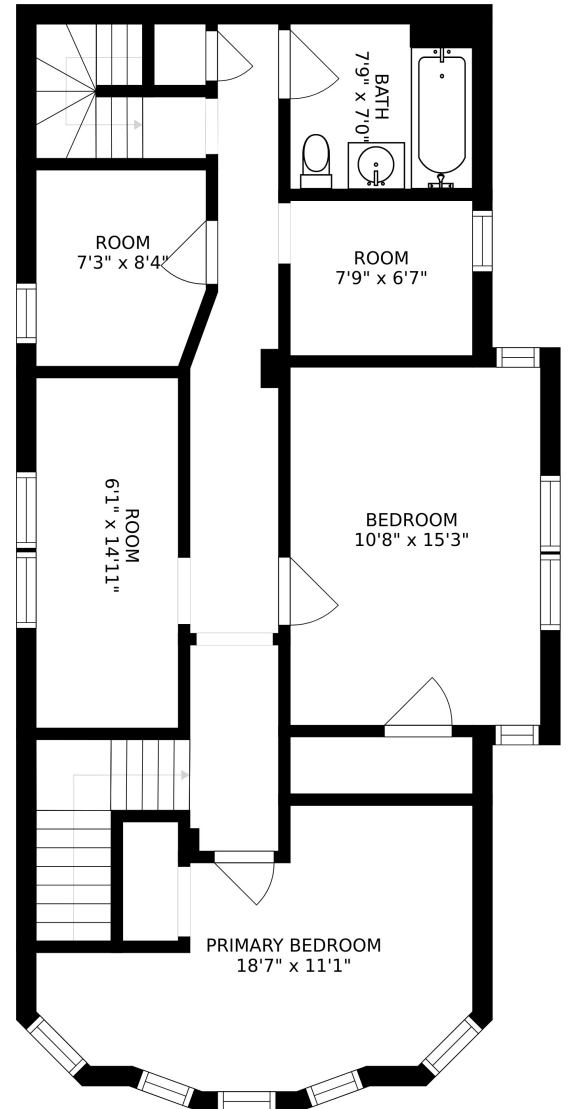
SITTING ROOM  
9'4" x 12'3"

DINING ROOM  
11'4" x 15'3"

LIVING ROOM  
11'4" x 15'6"

FOYER  
6'3" x 14'10"

FLOOR 2



BATH  
7'9" x 7'0"

ROOM  
7'3" x 8'4"

ROOM  
7'9" x 6'7"

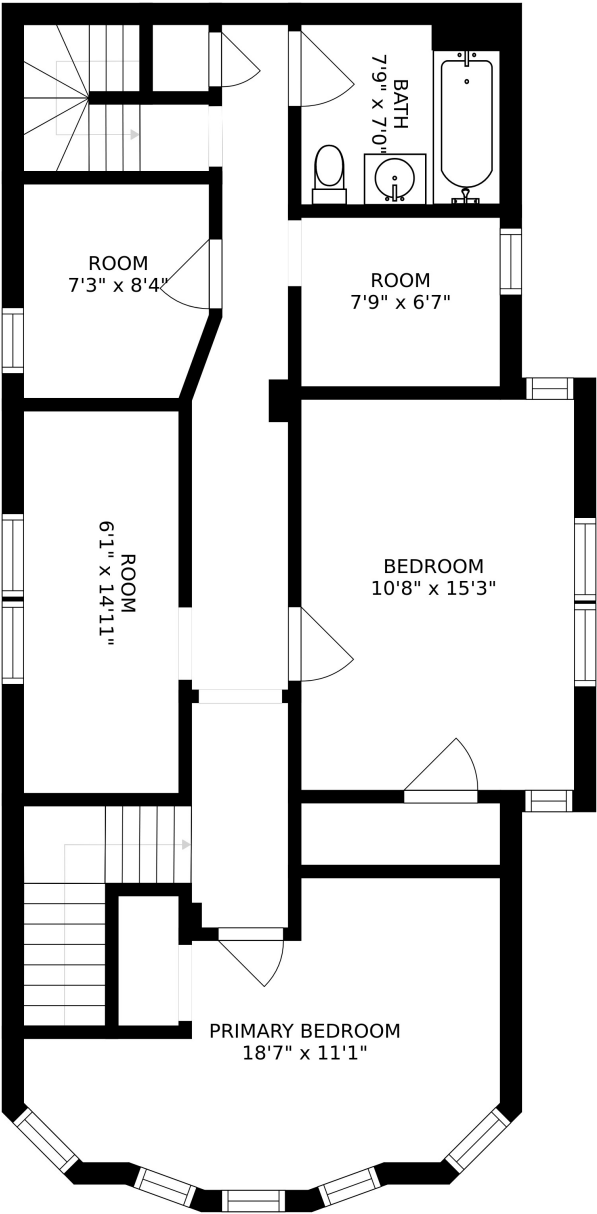
ROOM  
6'1" x 14'11"

BEDROOM  
10'8" x 15'3"

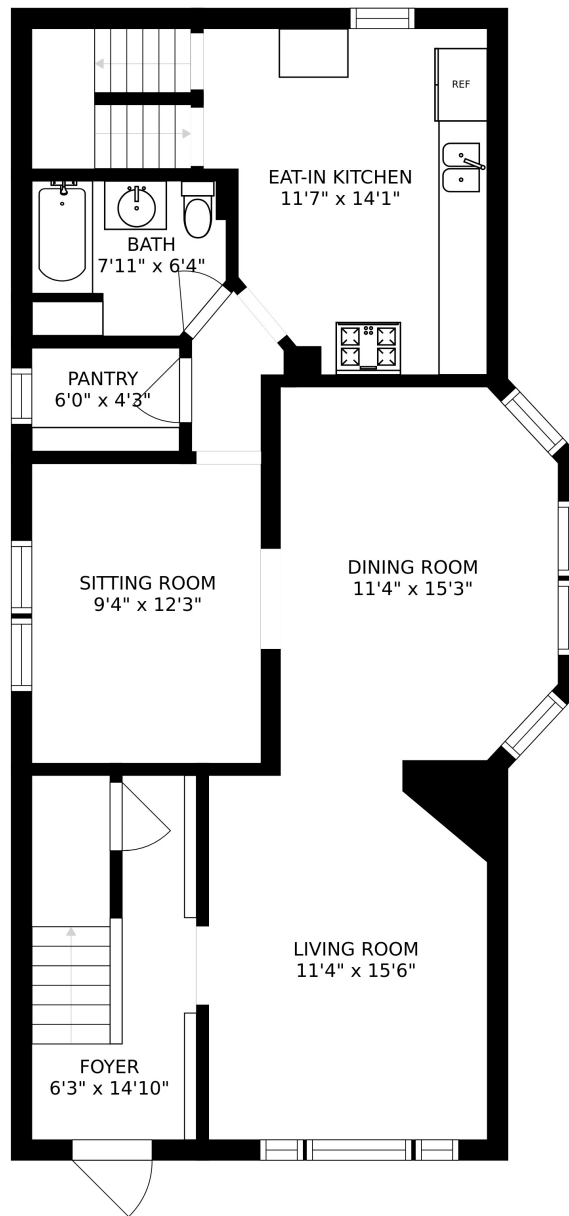
PRIMARY BEDROOM  
18'7" x 11'1"

FLOOR 3

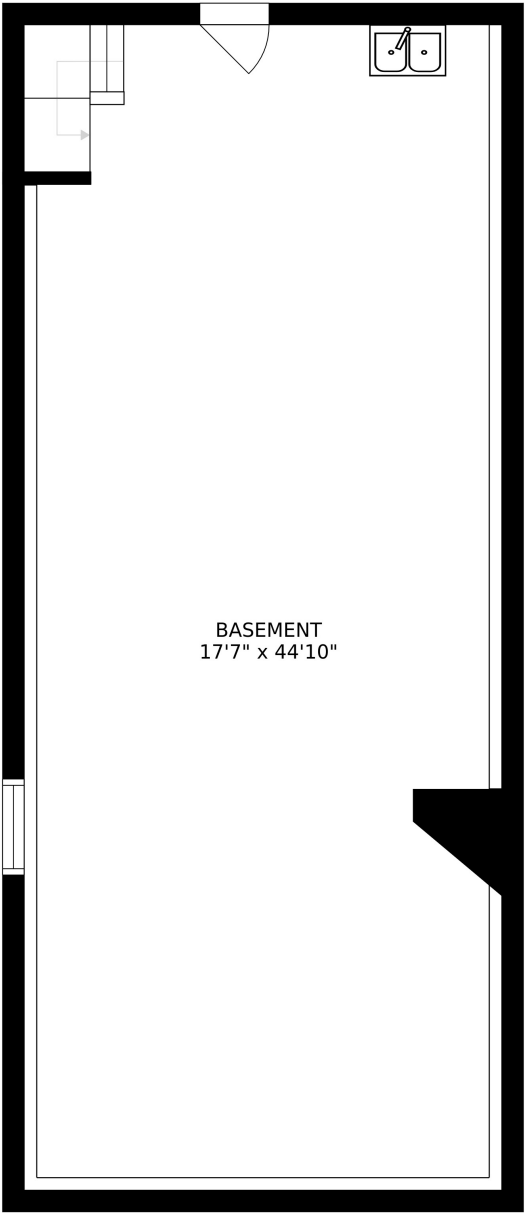
SIZES AND DIMENSIONS ARE APPROXIMATE, ACTUAL MAY VARY.



SIZES AND DIMENSIONS ARE APPROXIMATE, ACTUAL MAY VARY.



SIZES AND DIMENSIONS ARE APPROXIMATE, ACTUAL MAY VARY.



SIZES AND DIMENSIONS ARE APPROXIMATE, ACTUAL MAY VARY.