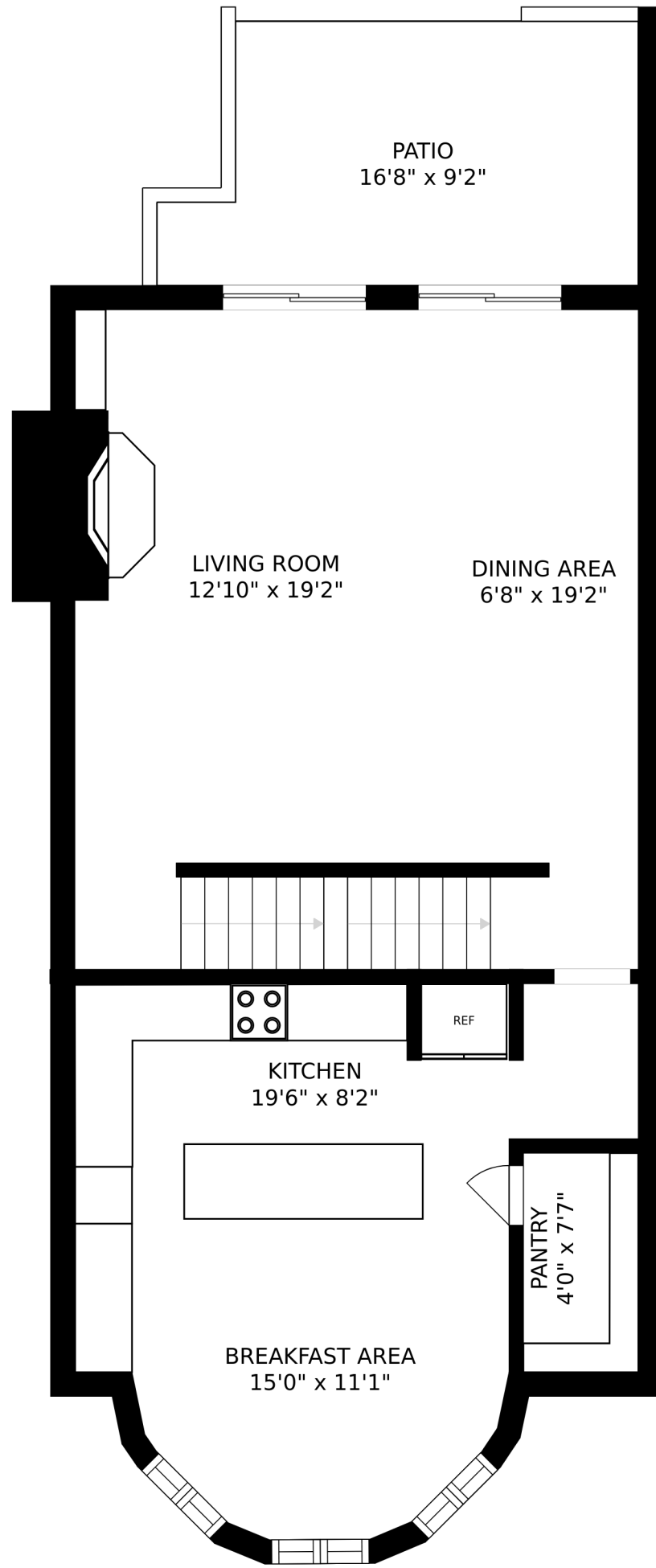
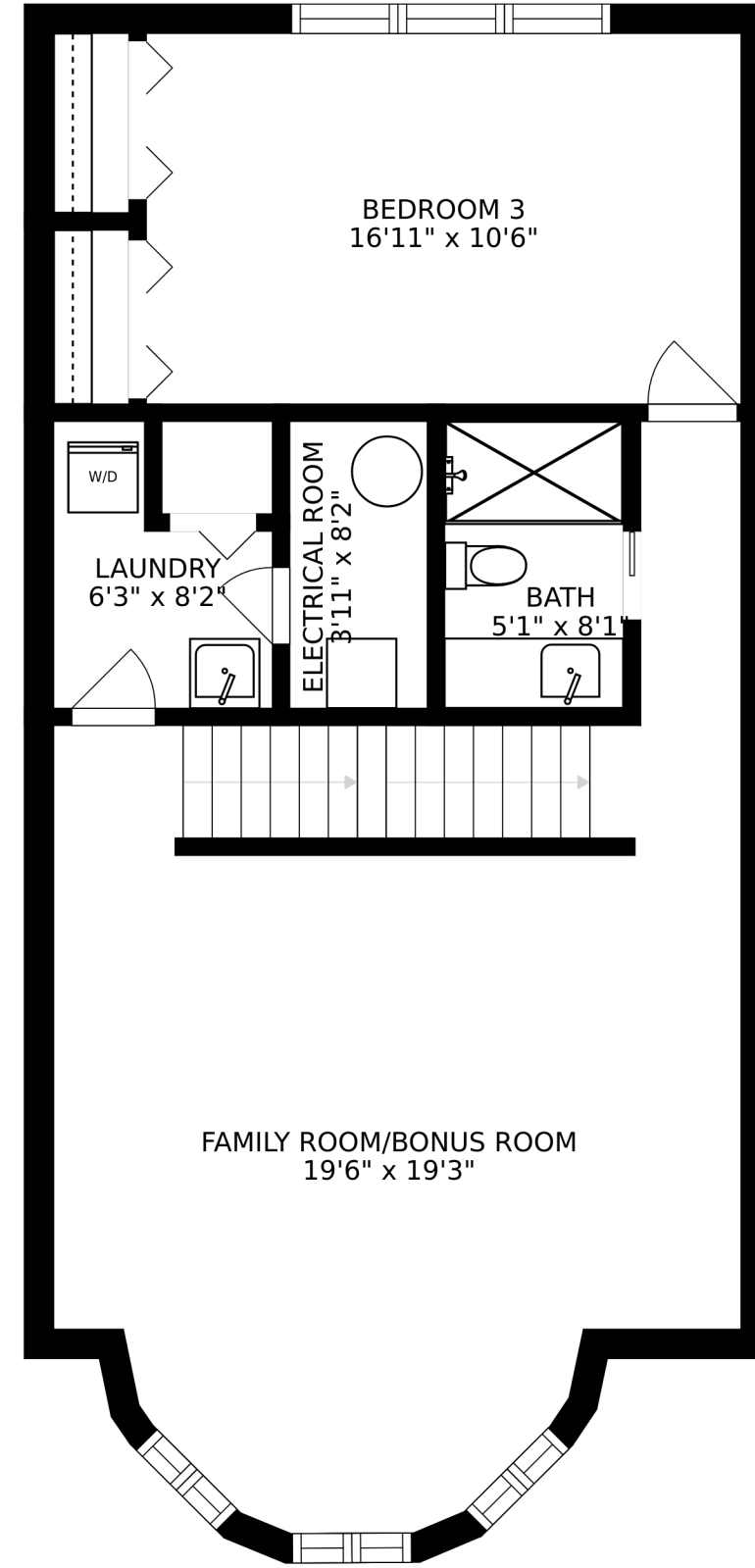


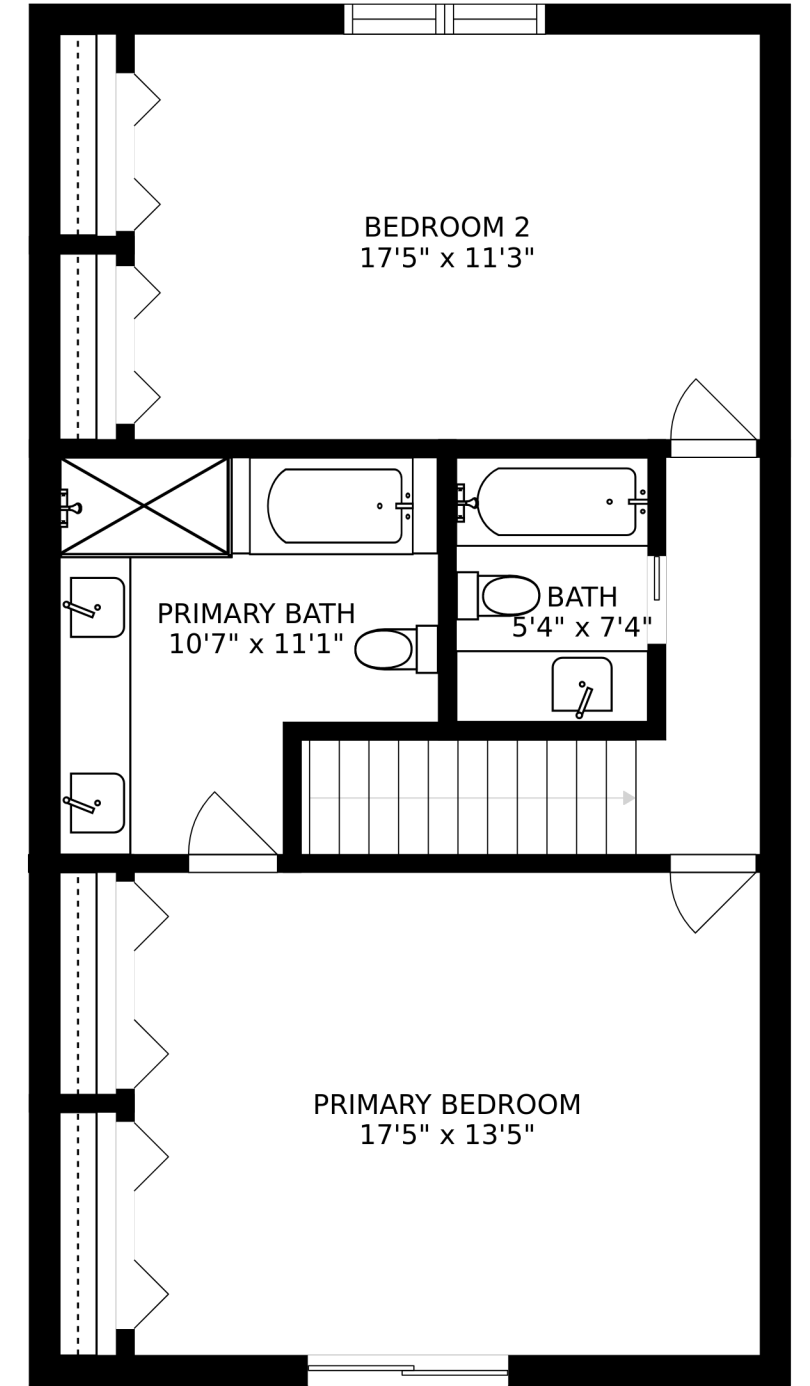
FLOOR 1



FLOOR 2

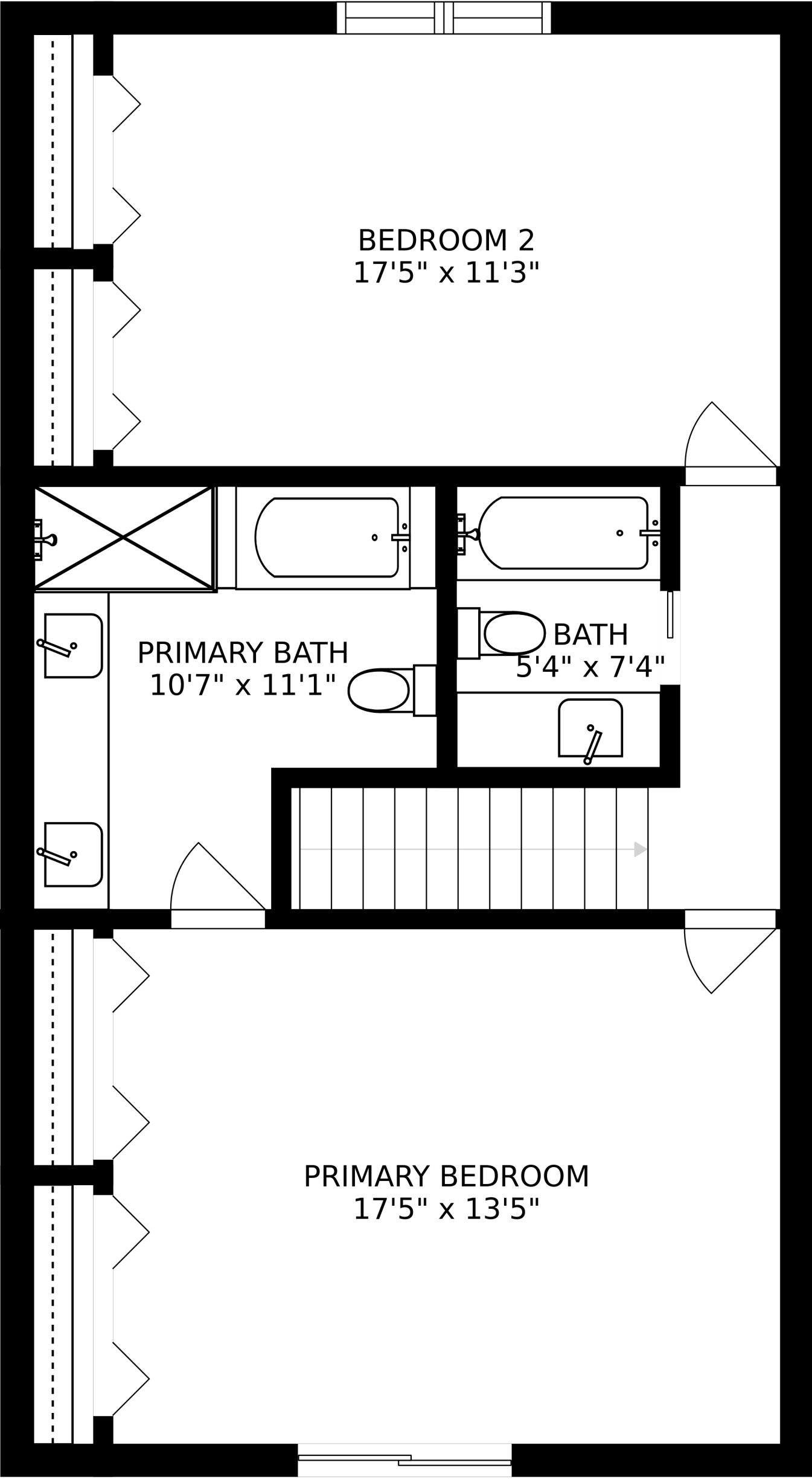


FLOOR 3



FLOOR 4

SIZES AND DIMENSIONS ARE APPROXIMATE, ACTUAL MAY VARY.

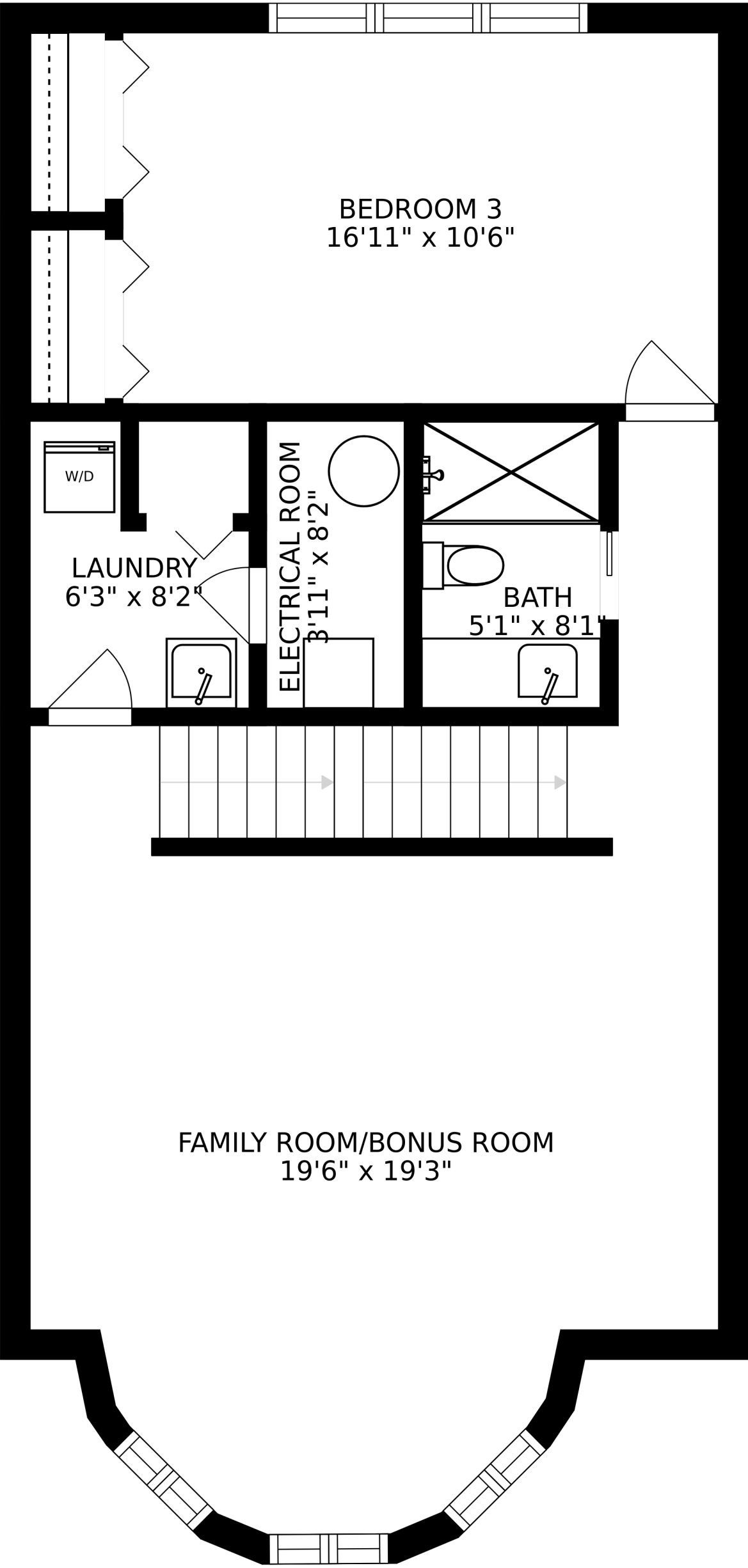


BEDROOM 2
17'5" x 11'3"

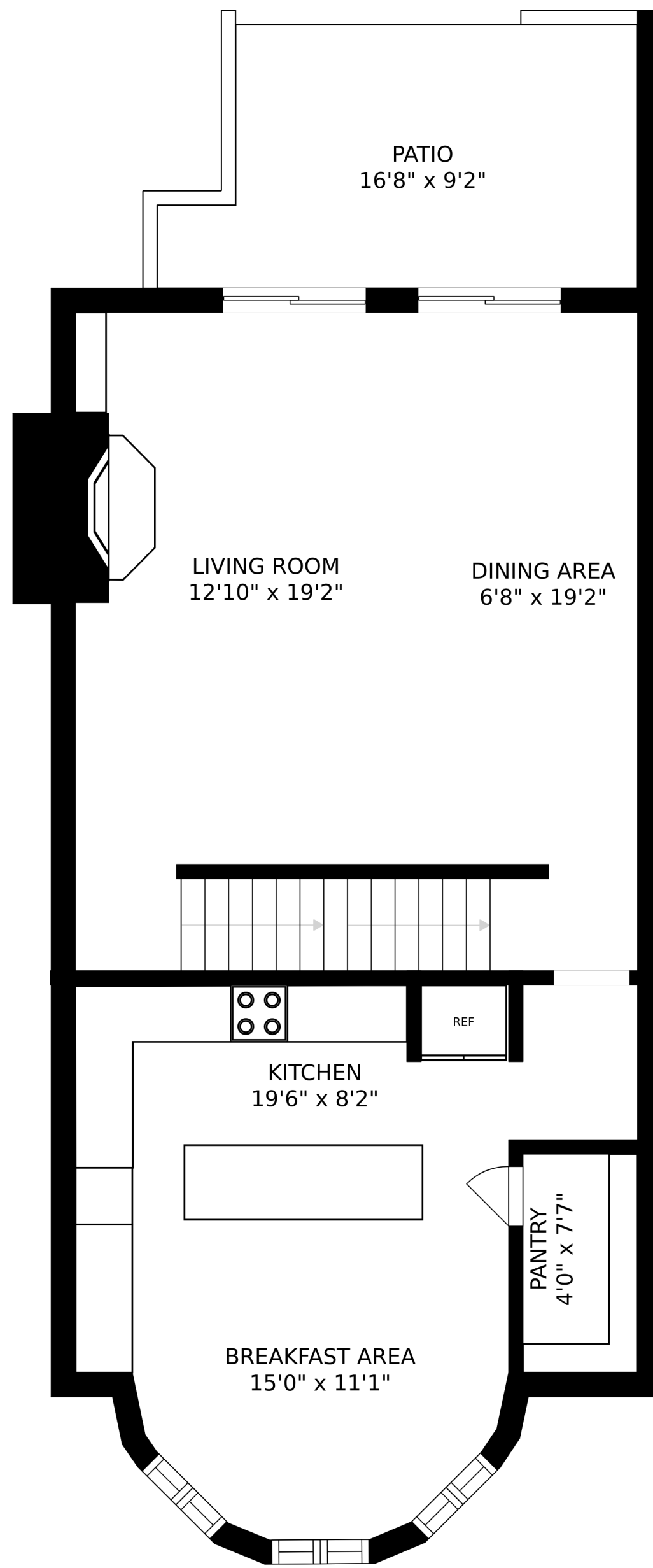
PRIMARY BATH
10'7" x 11'1"

BATH
5'4" x 7'4"

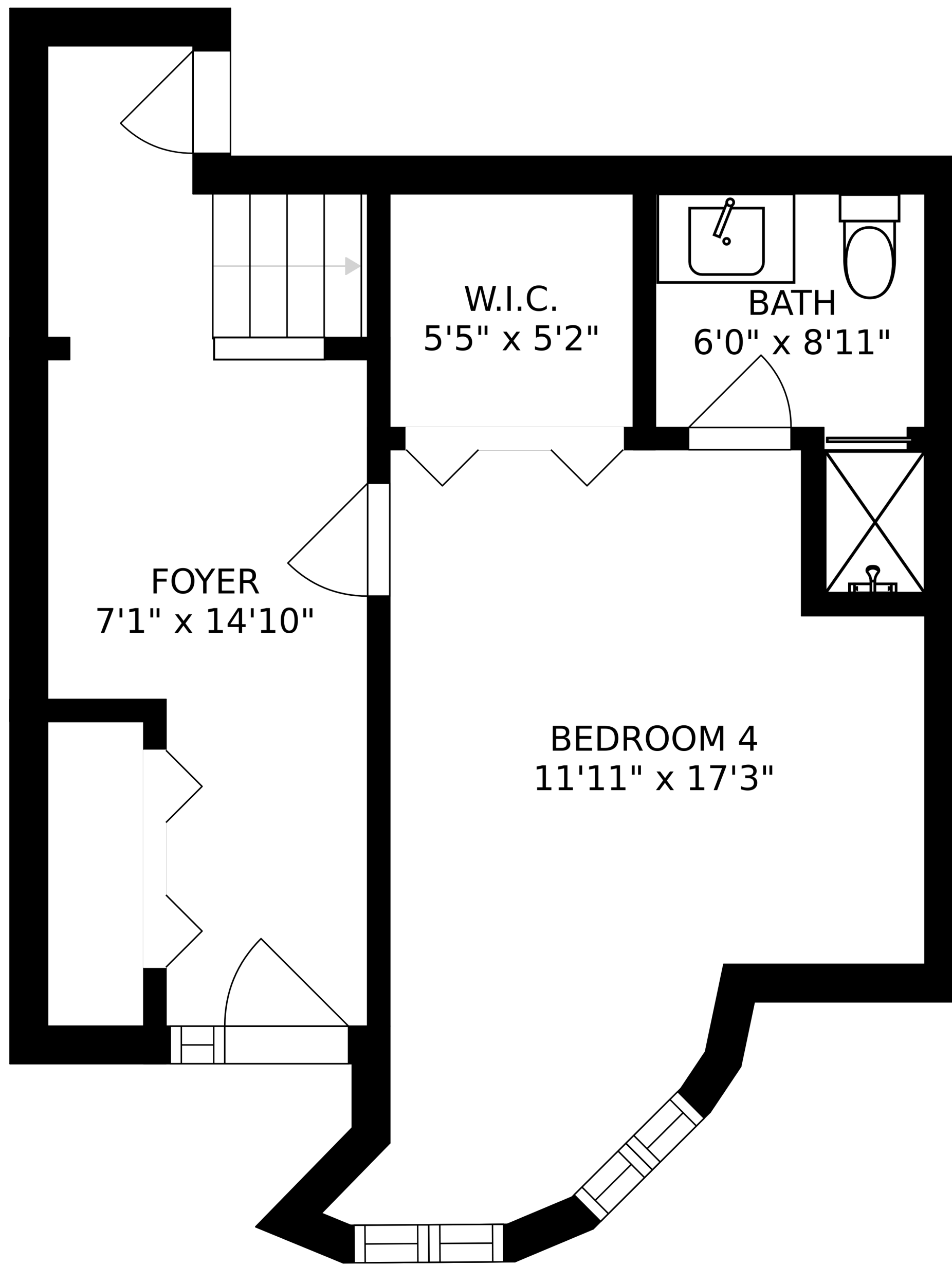
PRIMARY BEDROOM
17'5" x 13'5"



SIZES AND DIMENSIONS ARE APPROXIMATE, ACTUAL MAY VARY.



SIZES AND DIMENSIONS ARE APPROXIMATE, ACTUAL MAY VARY.



FOYER
7'1" x 14'10"

W.I.C.
5'5" x 5'2"

BATH
6'0" x 8'11"

BEDROOM 4
11'11" x 17'3"