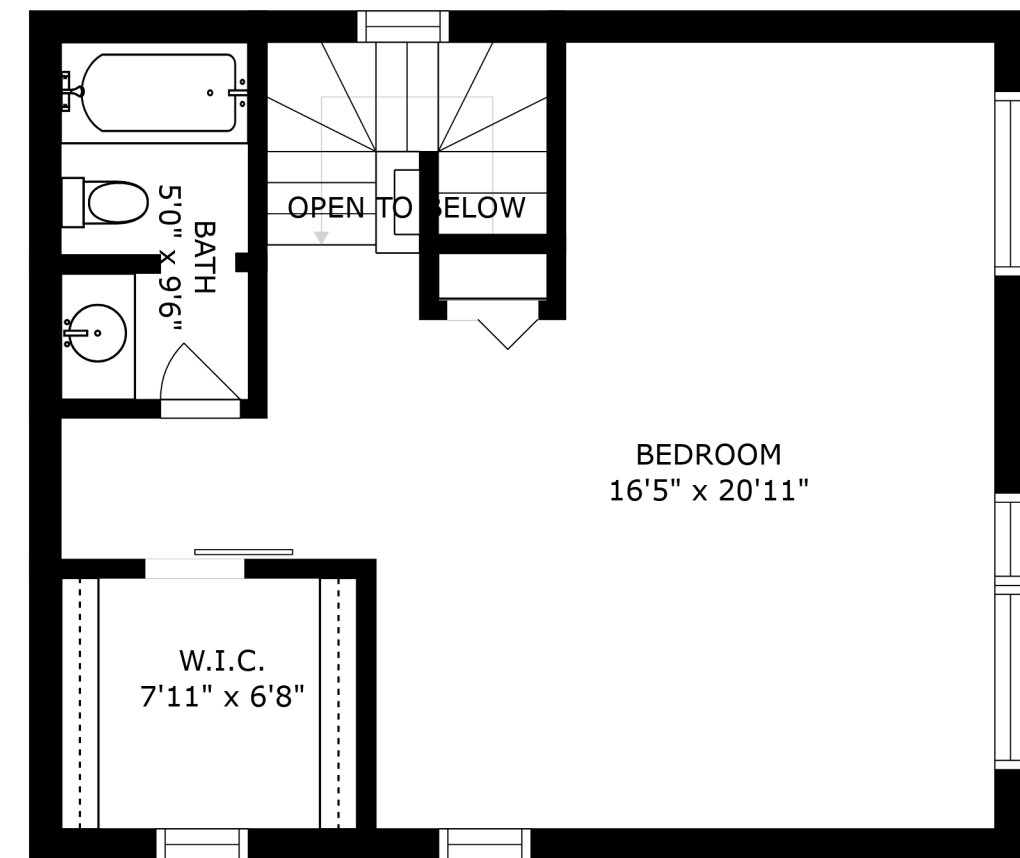
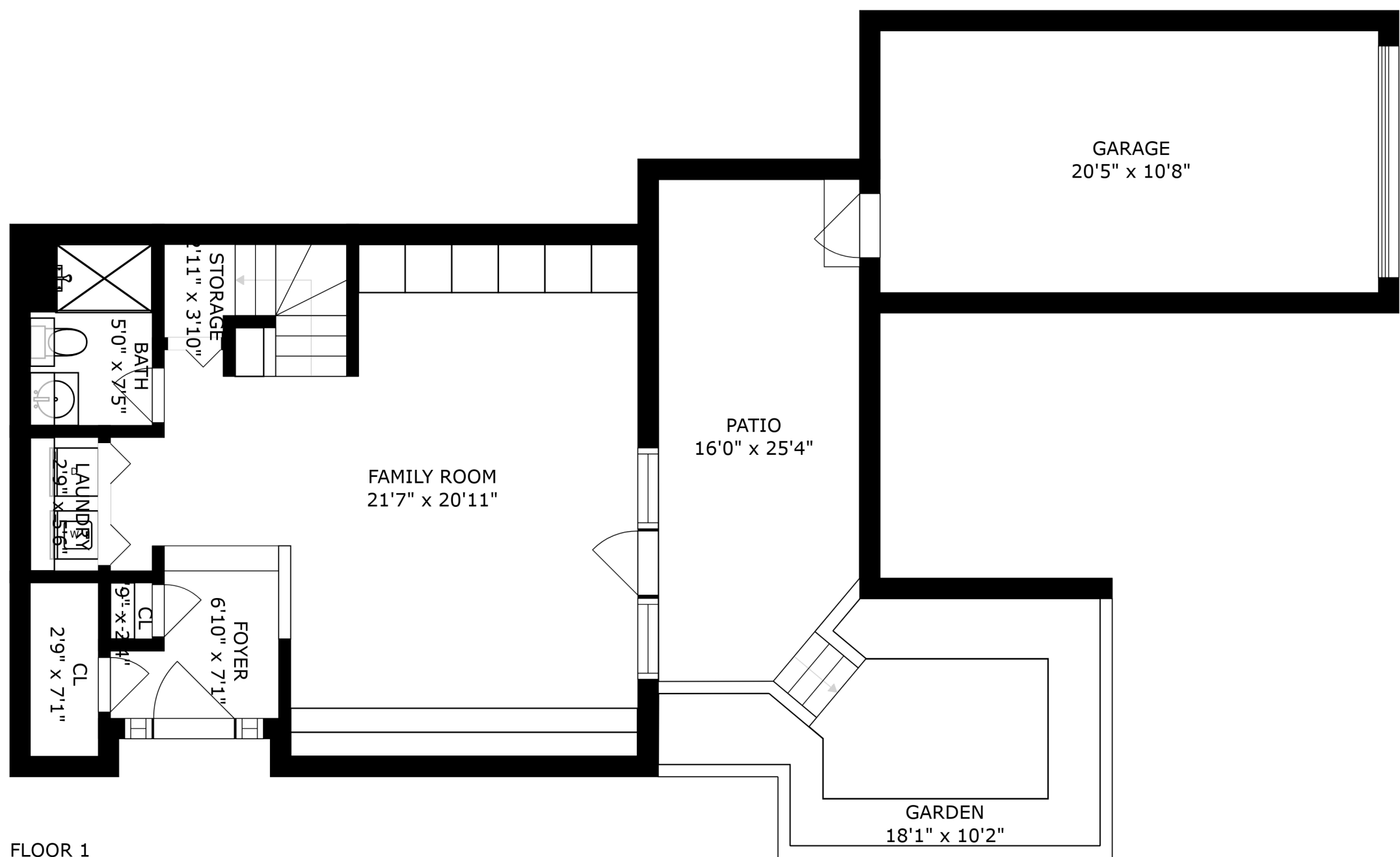


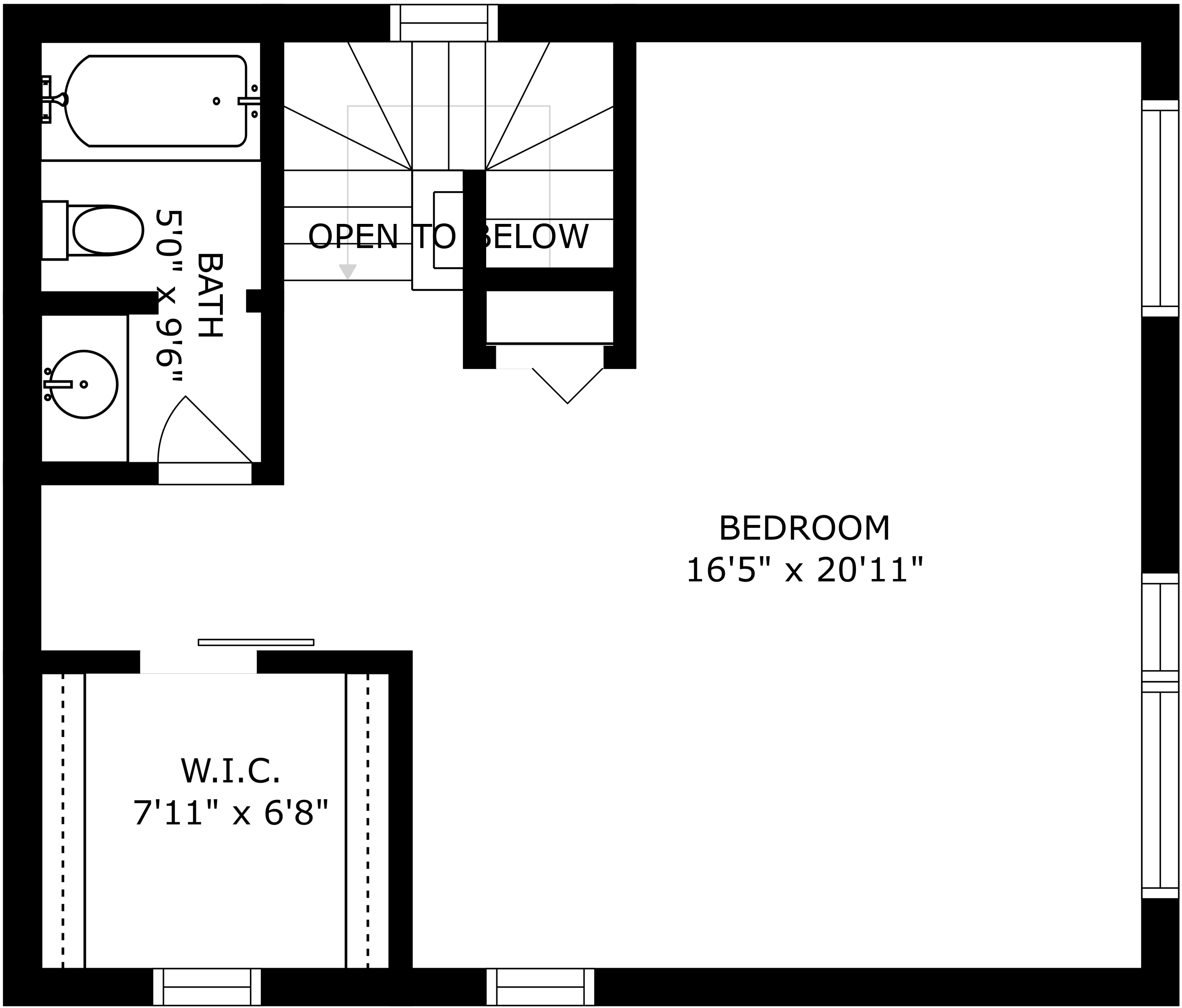
FLOOR 2



FLOOR 3



FLOOR 1

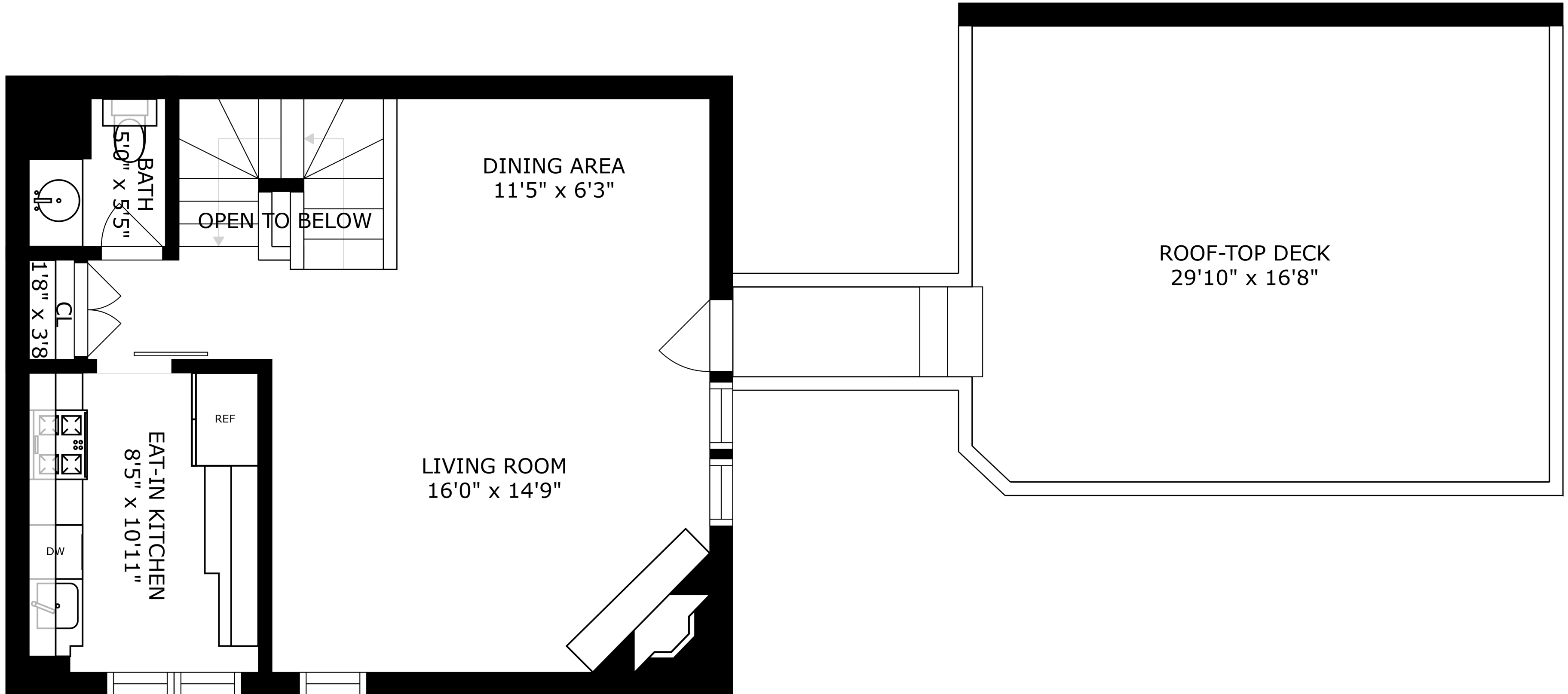


W.I.C.
7'11" x 6'8"

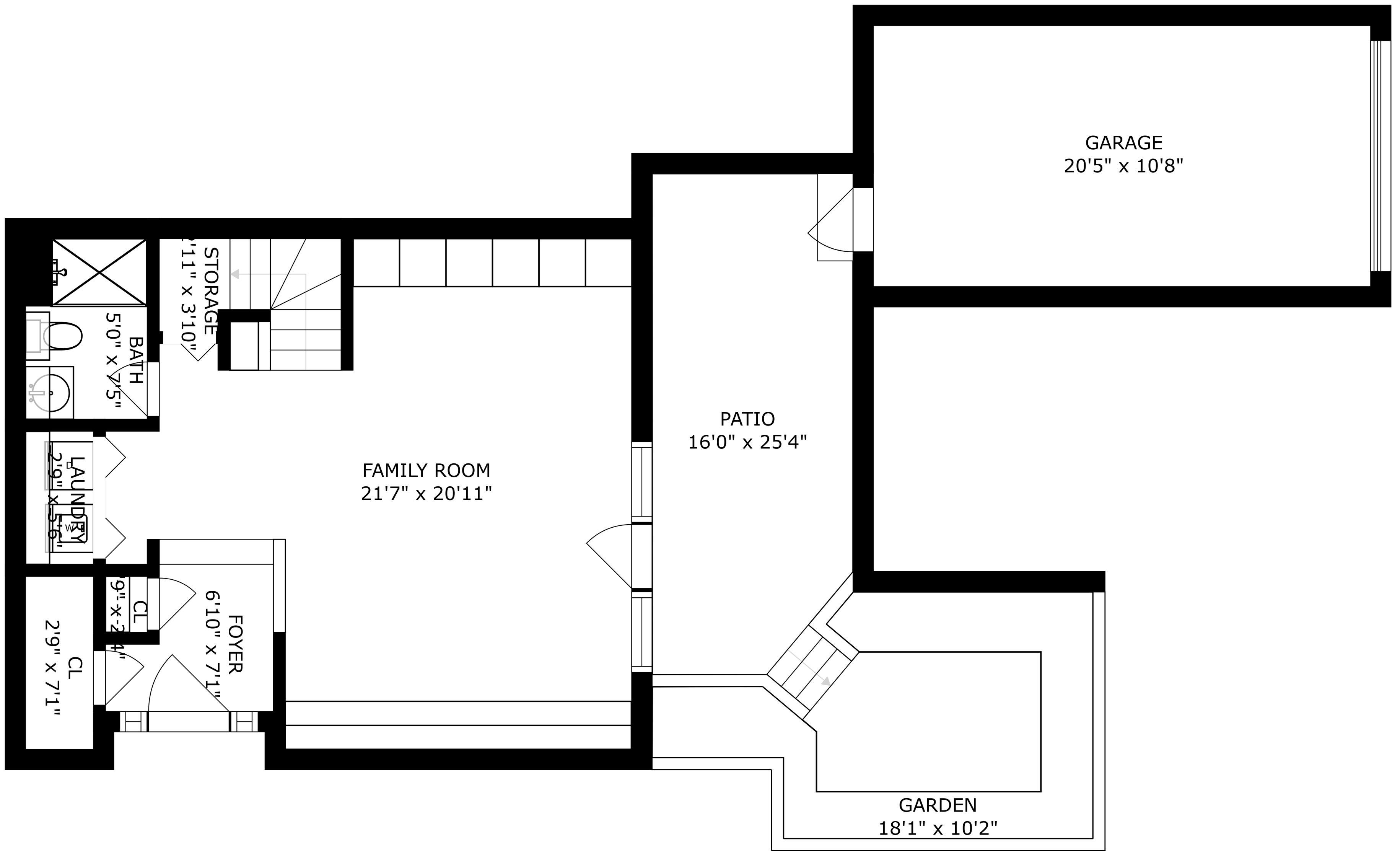
OPEN TO BELOW

BEDROOM
16'5" x 20'11"

BATH
5'0" x 9'6"



SIZES AND DIMENSIONS ARE APPROXIMATE, ACTUAL MAY VARY.



SIZES AND DIMENSIONS ARE APPROXIMATE, ACTUAL MAY VARY.