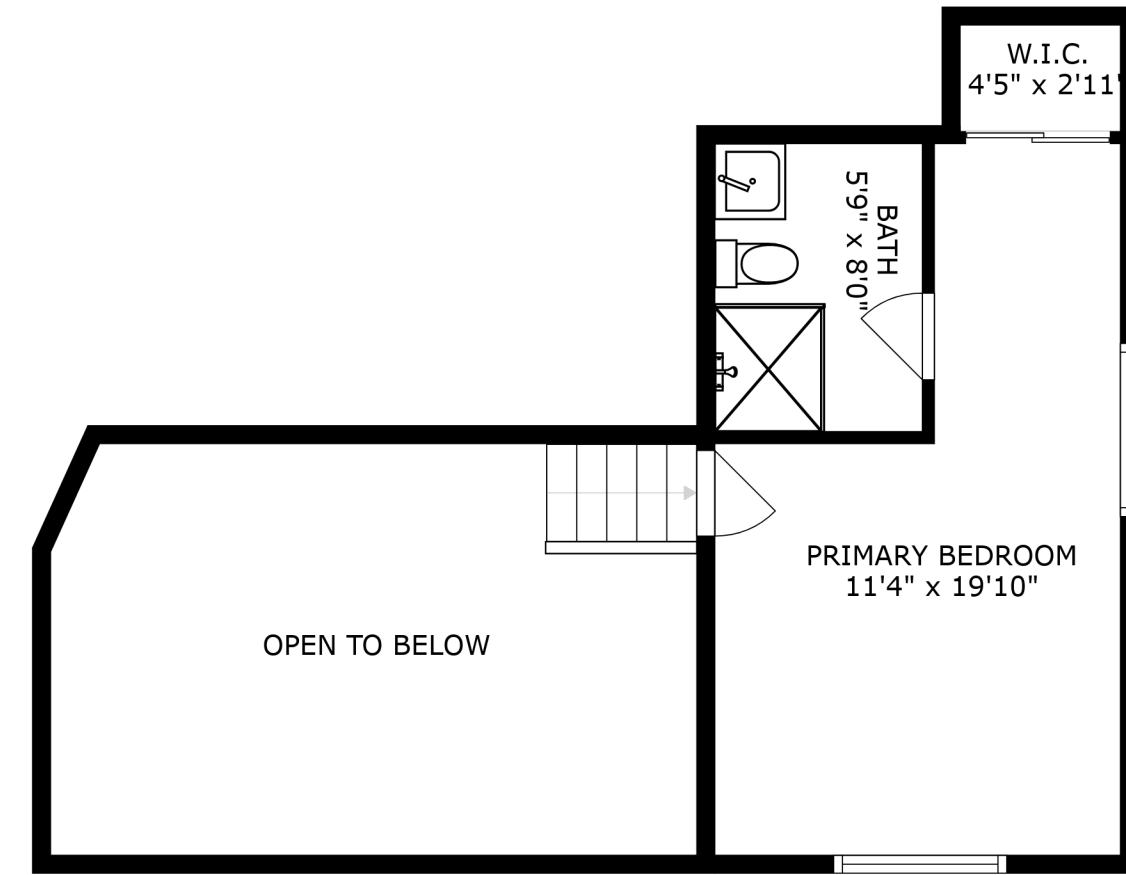
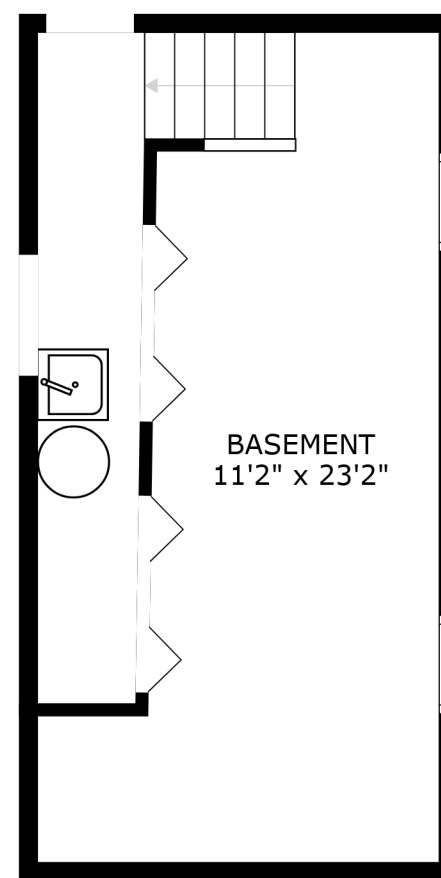


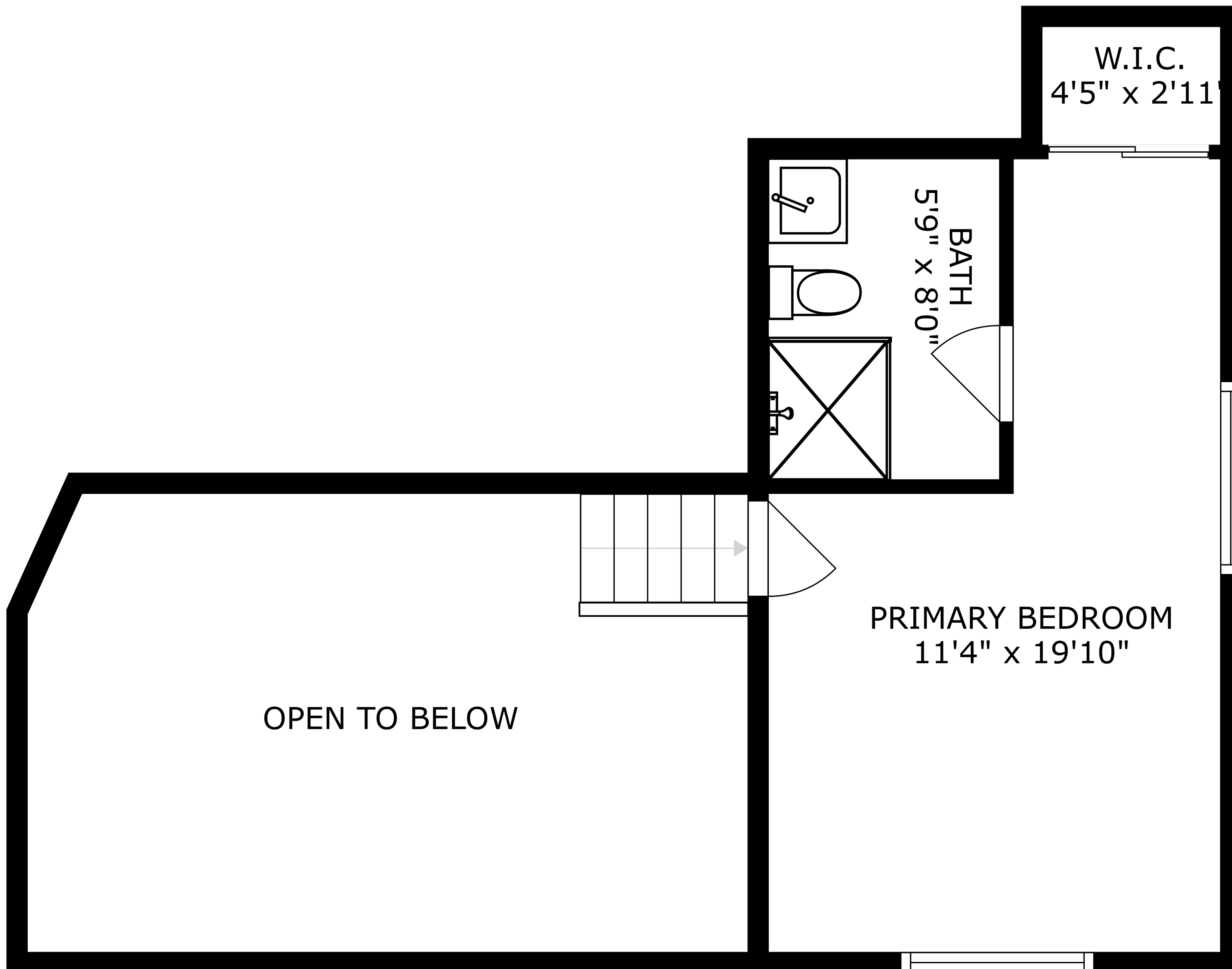
FLOOR 2



FLOOR 3



FLOOR 1

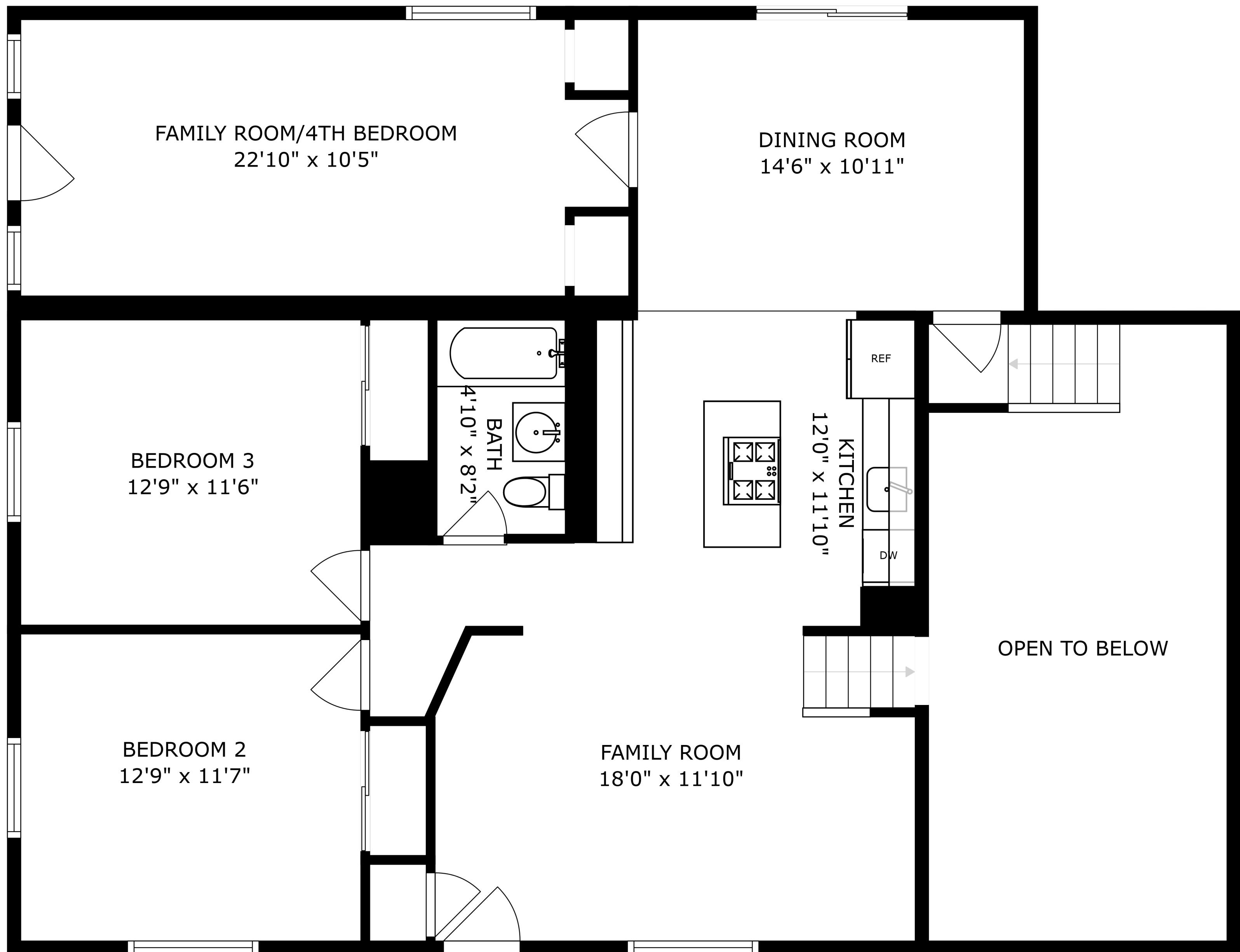


OPEN TO BELOW

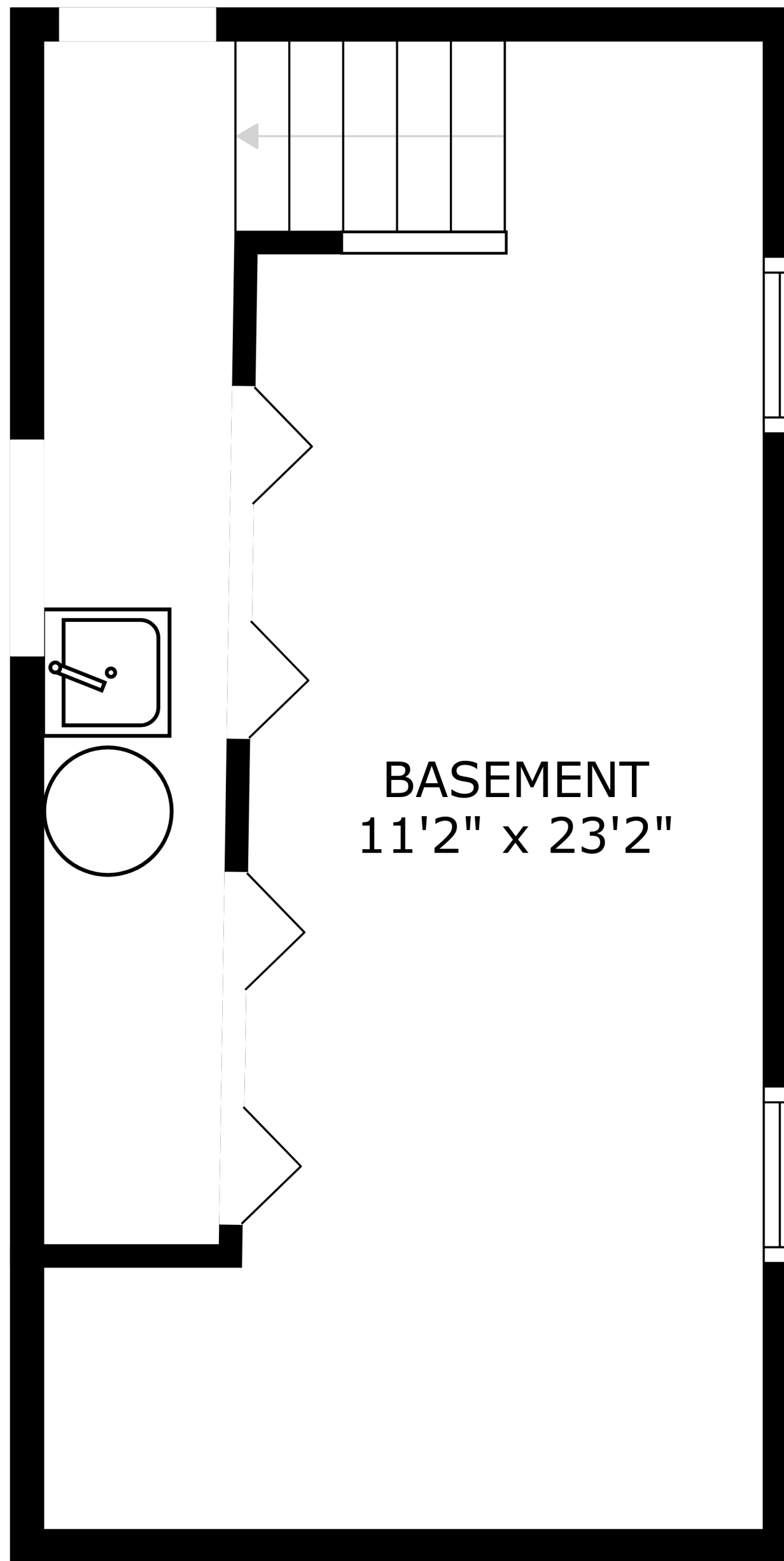
PRIMARY BEDROOM
11'4" x 19'10"

BATH
5'9" x 8'0"

W.I.C.
4'5" x 2'11"



SIZES AND DIMENSIONS ARE APPROXIMATE, ACTUAL MAY VARY.



BASEMENT
11'2" x 23'2"