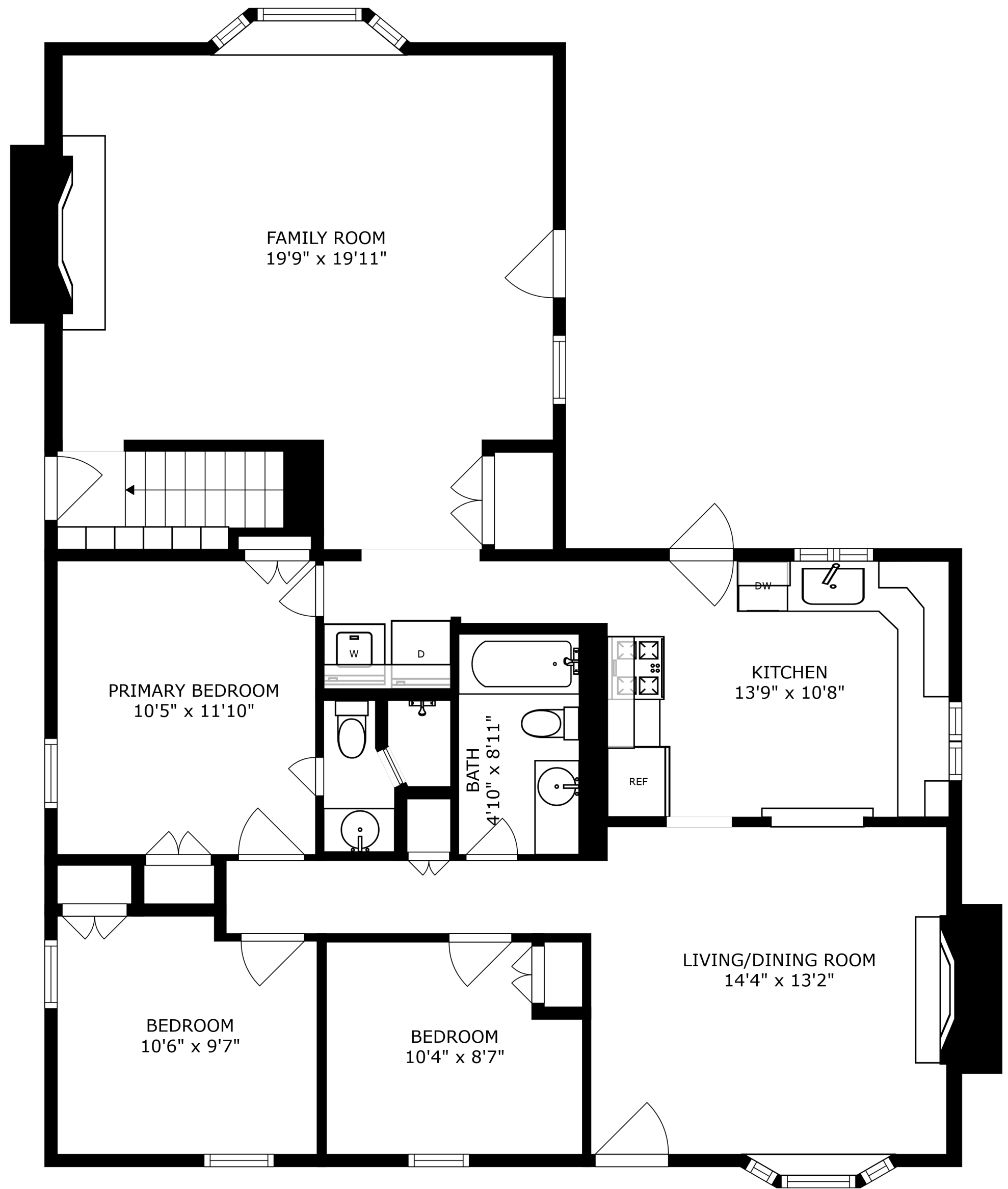


BASEMENT  
19'0" x 18'7"

FLOOR 1



FAMILY ROOM  
19'9" x 19'11"

PRIMARY BEDROOM  
10'5" x 11'10"

KITCHEN  
13'9" x 10'8"

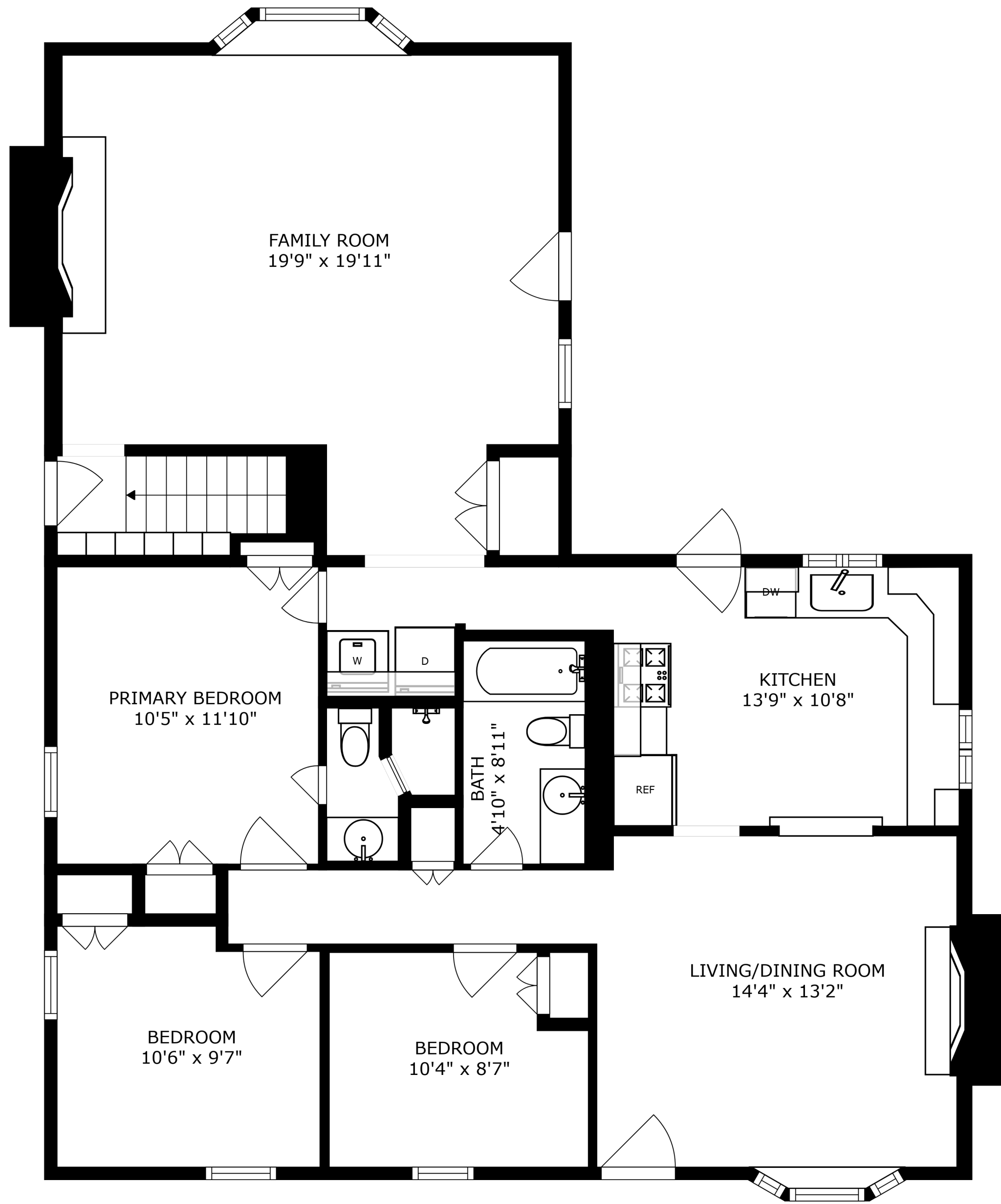
BATH  
4'10" x 8'11"

LIVING/DINING ROOM  
14'4" x 13'2"

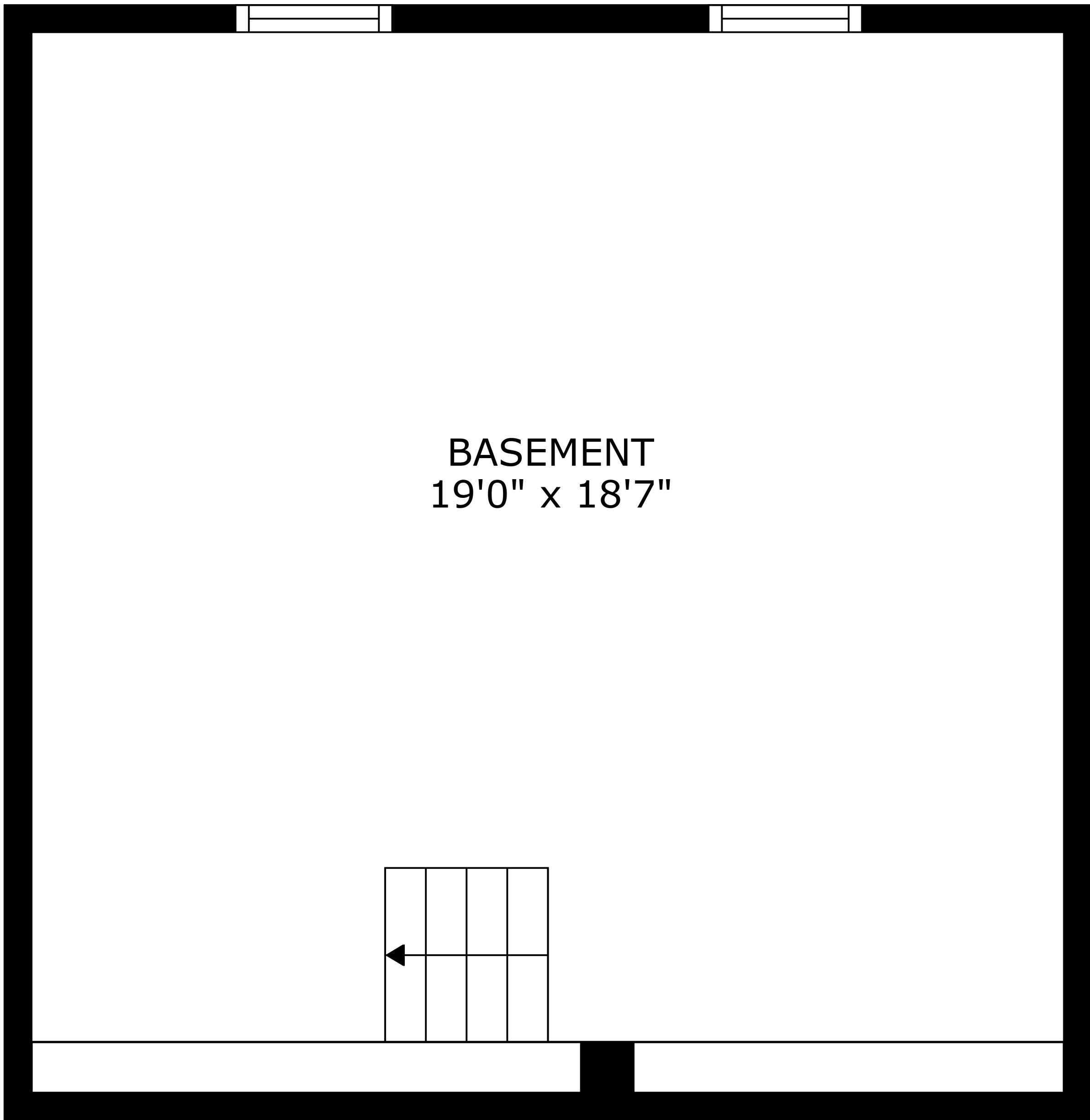
BEDROOM  
10'6" x 9'7"

BEDROOM  
10'4" x 8'7"

FLOOR 2



SIZES AND DIMENSIONS ARE APPROXIMATE, ACTUAL MAY VARY.



BASEMENT  
19'0" x 18'7"