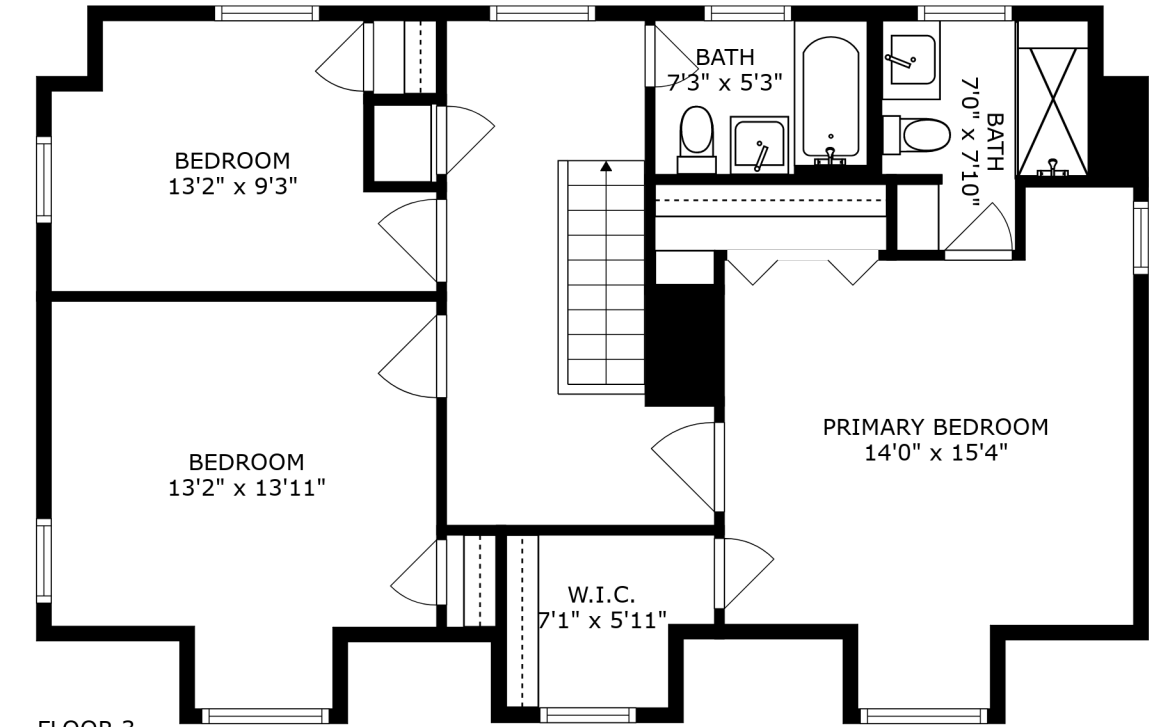
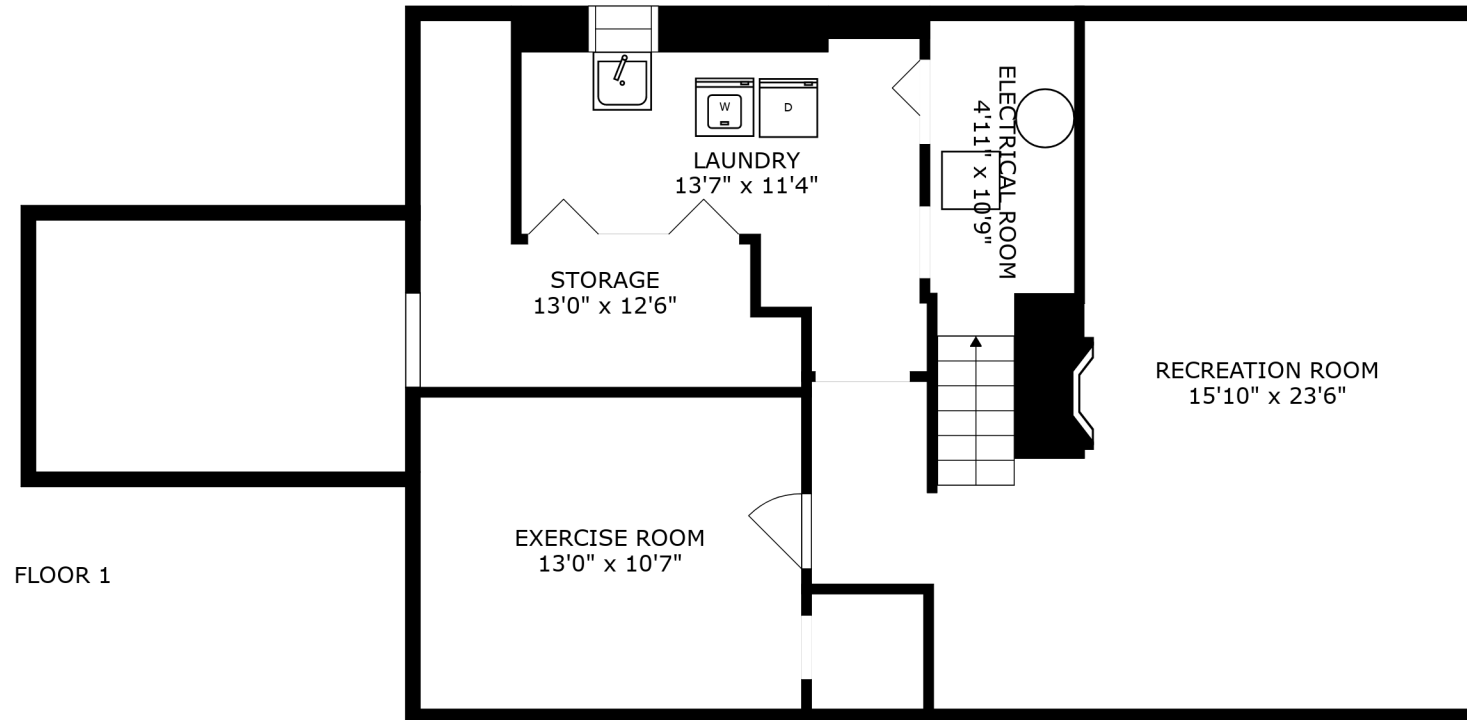


FLOOR 2

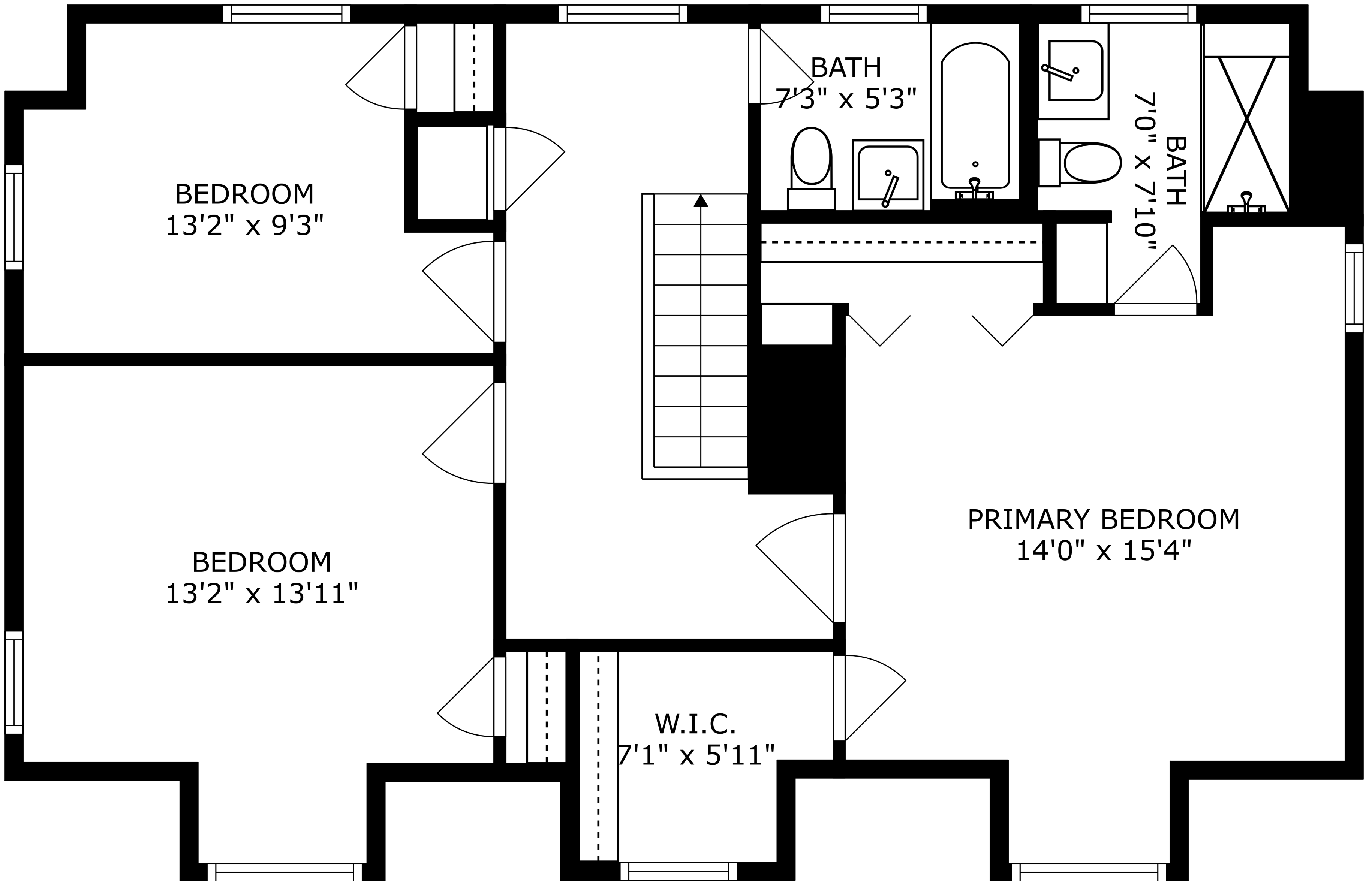
PATIO
12'11" x 25'4"



FLOOR 3



FLOOR 1



BEDROOM
13'2" x 9'3"

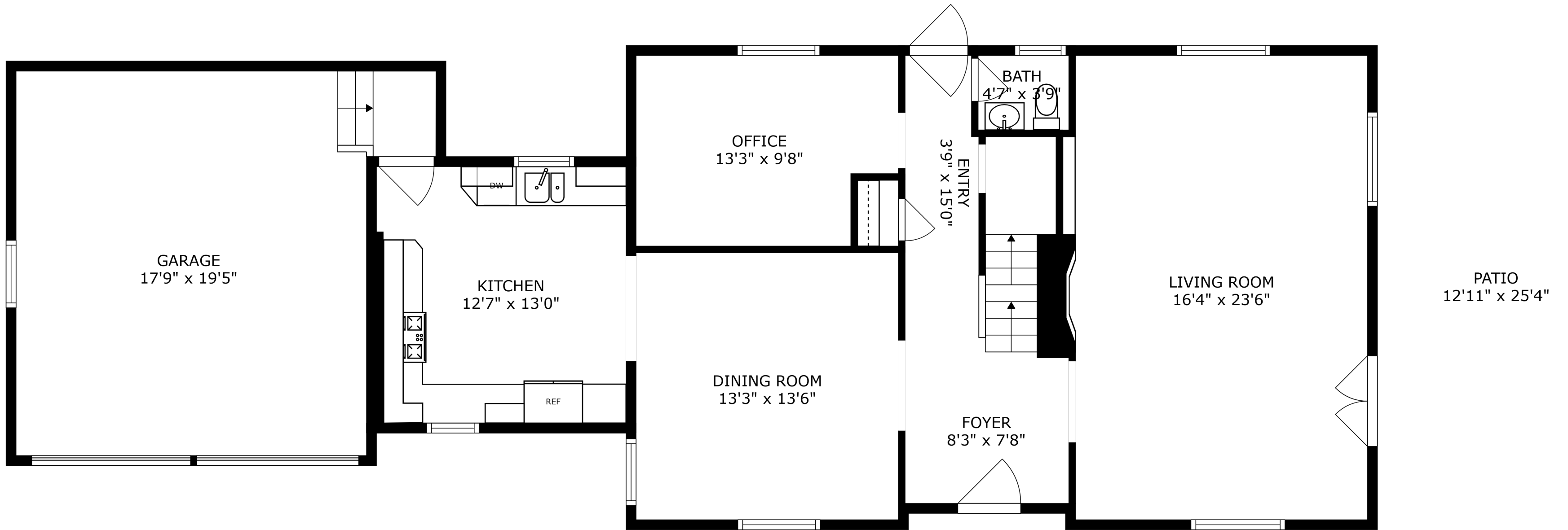
BEDROOM
13'2" x 13'11"

W.I.C.
7'1" x 5'11"

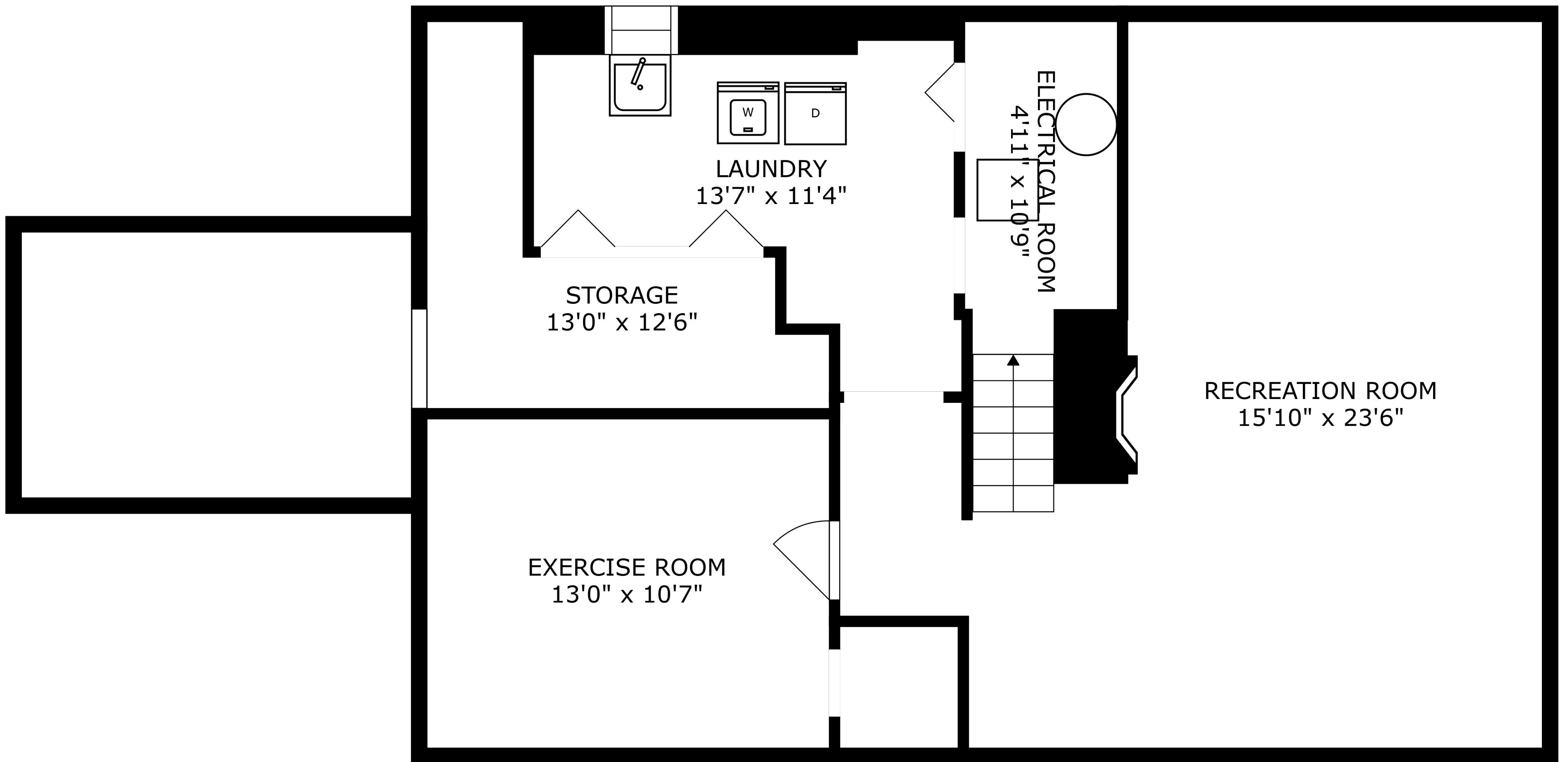
BATH
7'3" x 5'3"

BATH
7'0" x 7'10"

PRIMARY BEDROOM
14'0" x 15'4"



SIZES AND DIMENSIONS ARE APPROXIMATE, ACTUAL MAY VARY.



SIZES AND DIMENSIONS ARE APPROXIMATE, ACTUAL MAY VARY.