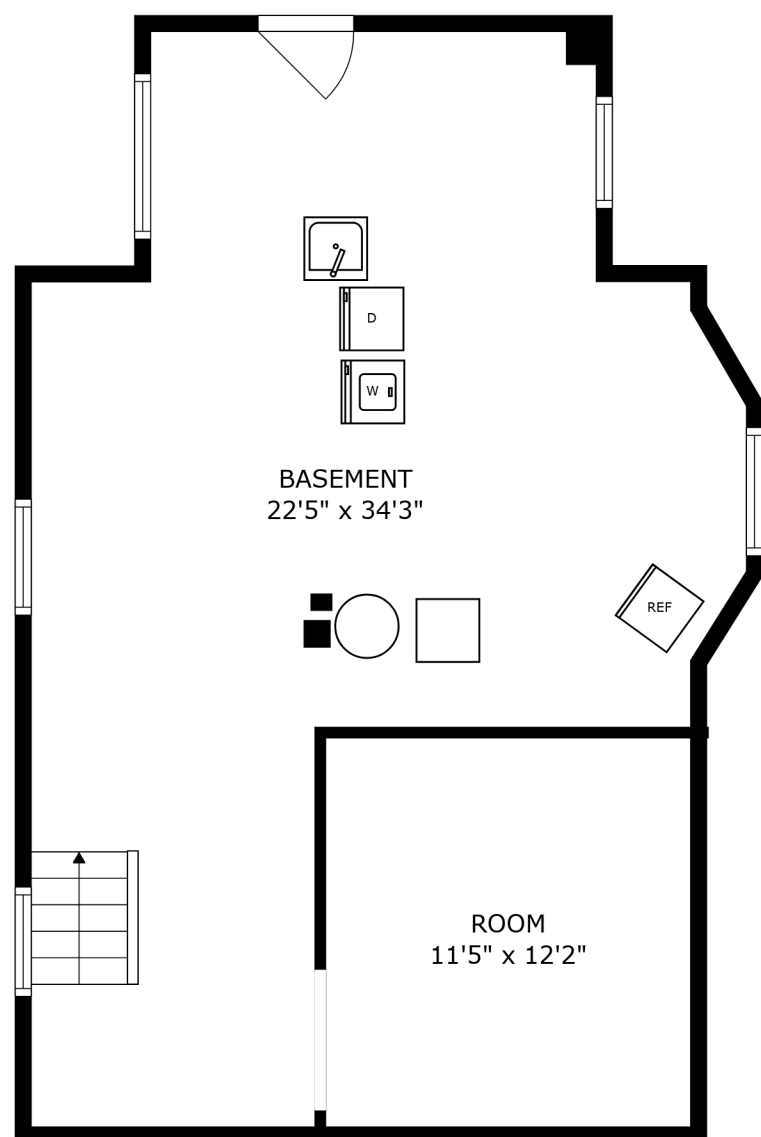
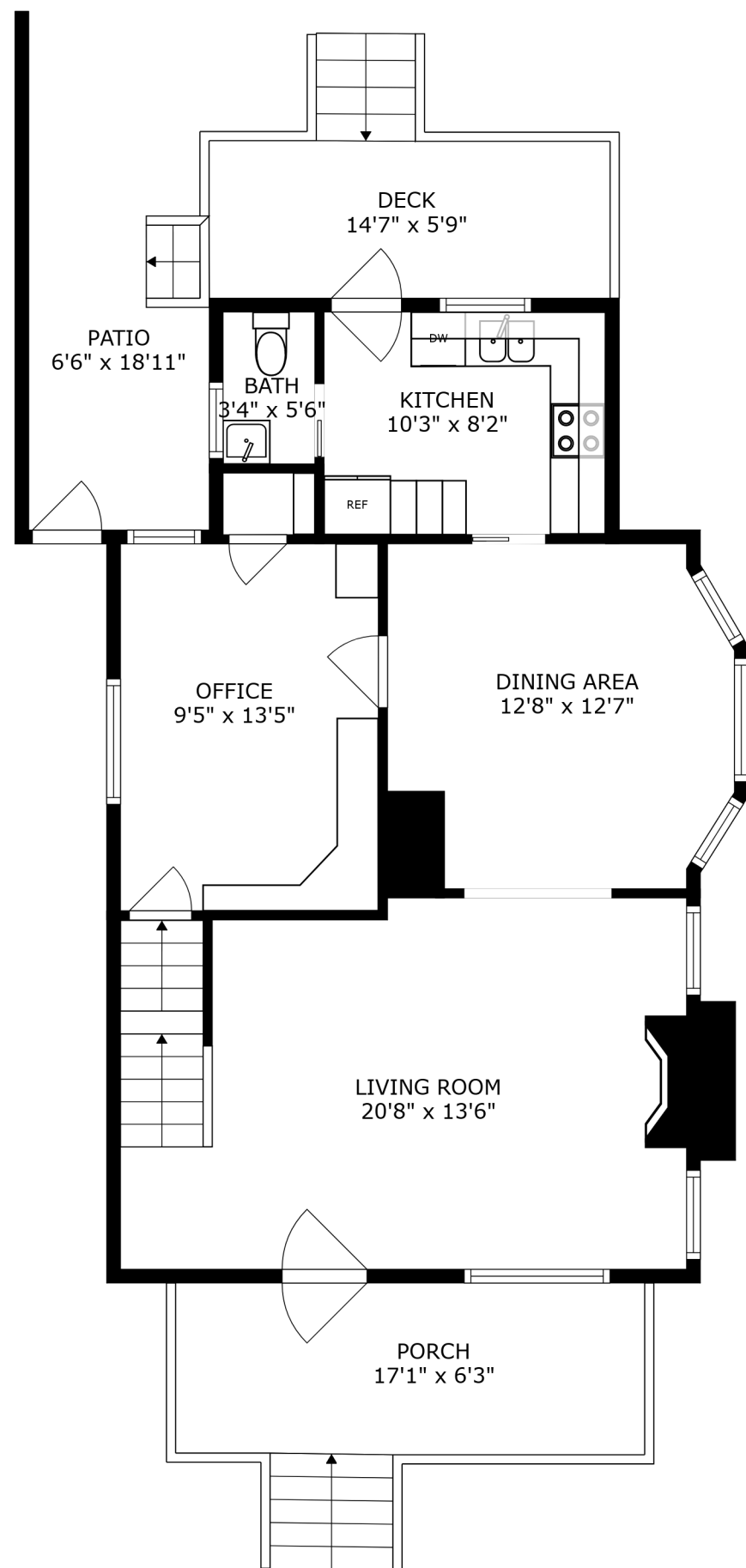


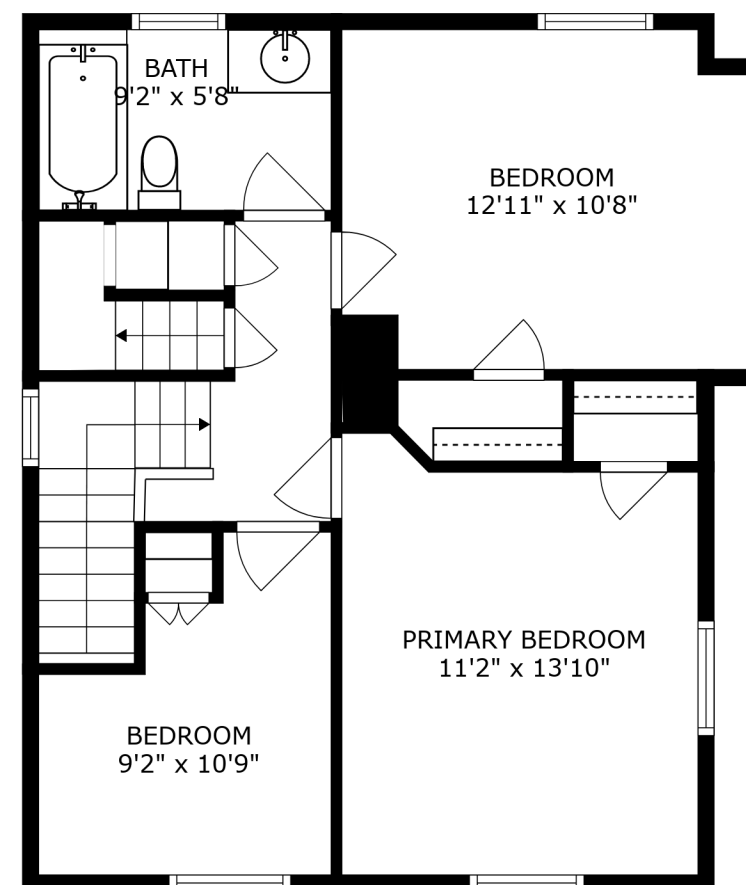
PATIO
14'0" x 22'8"



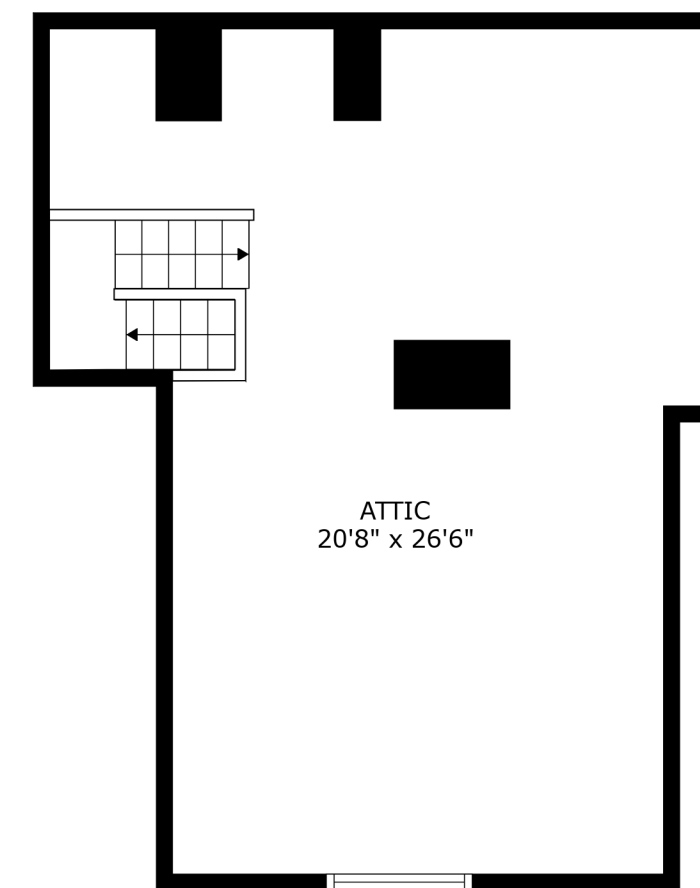
FLOOR 1



FLOOR 2

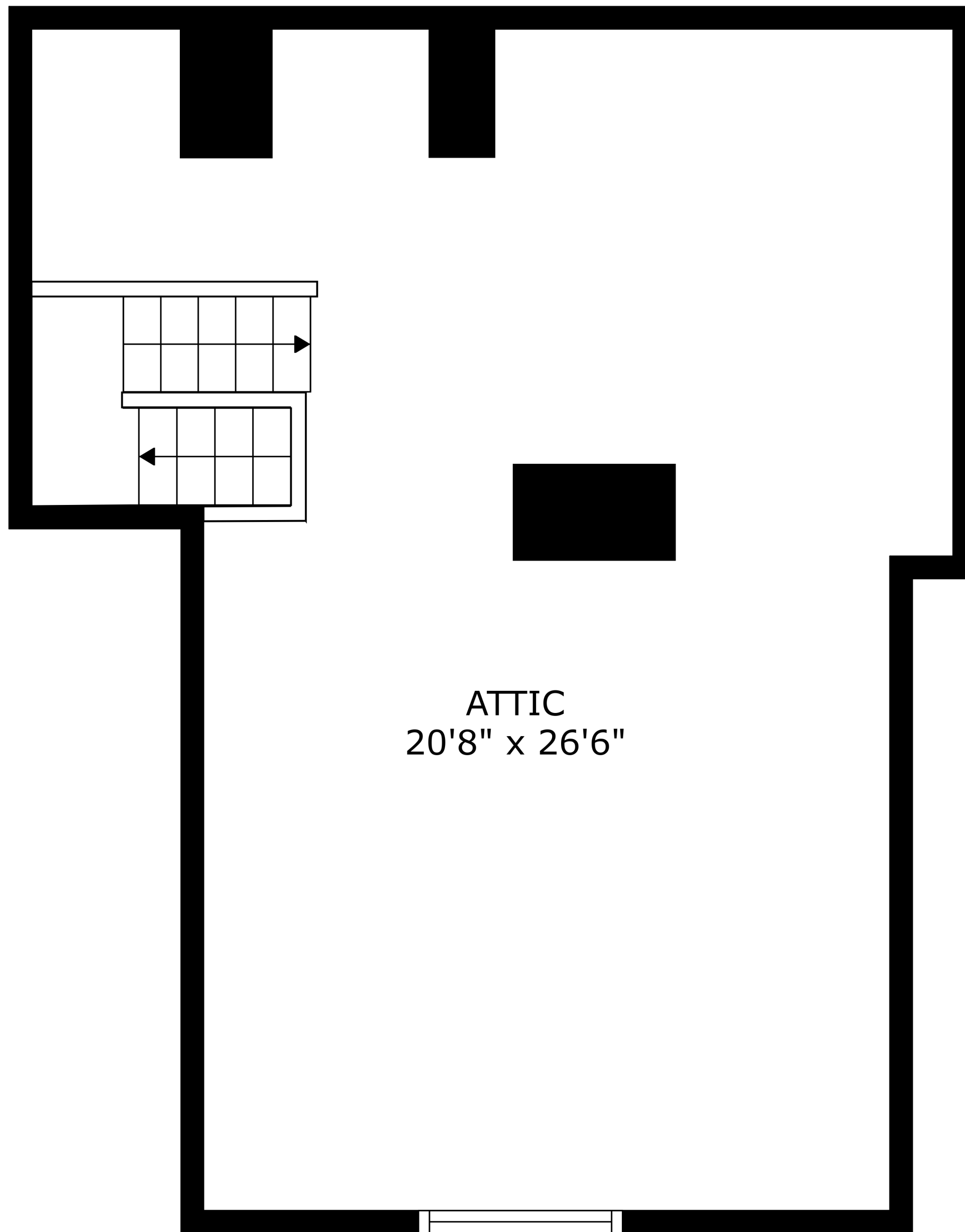


FLOOR 3

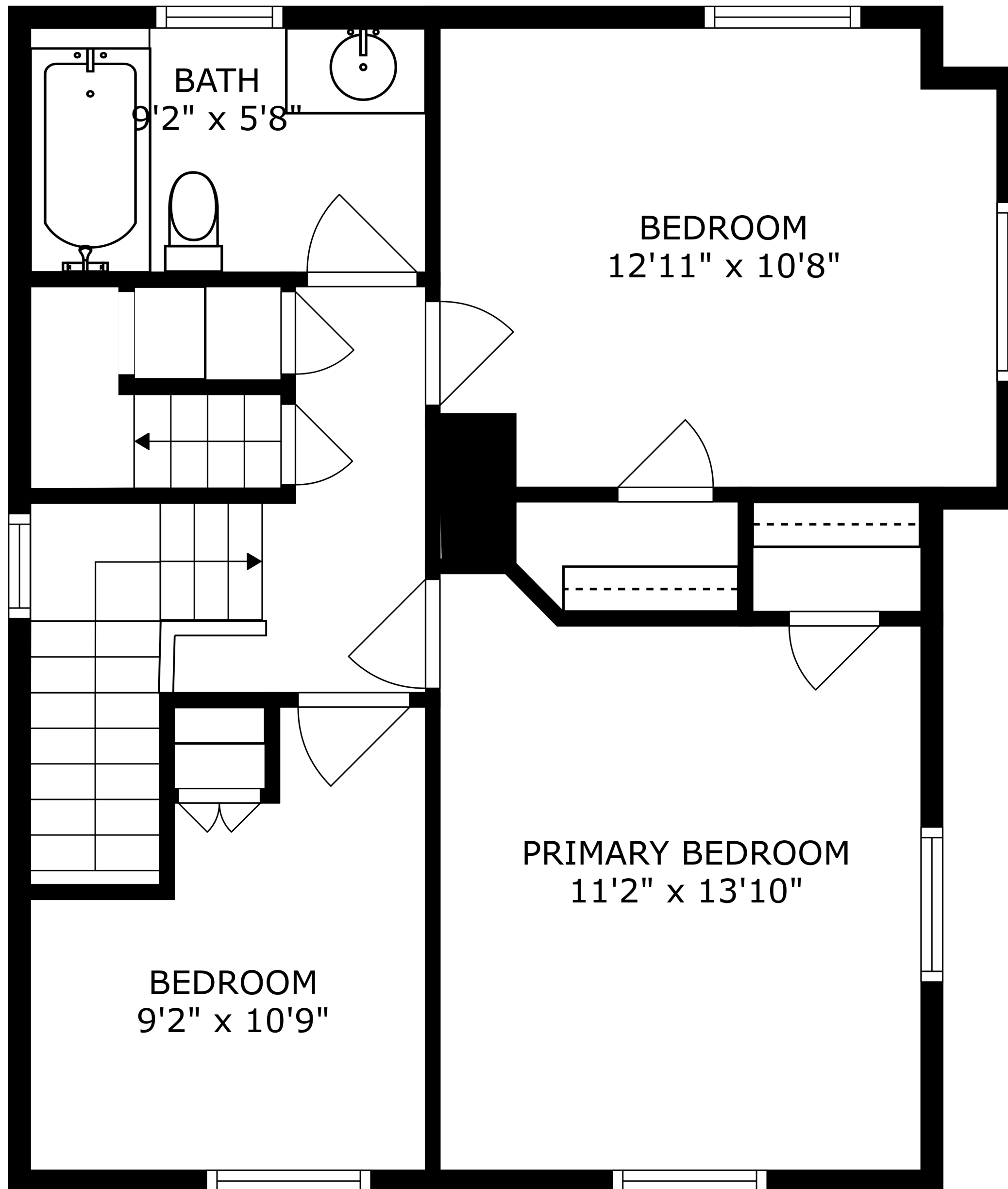


FLOOR 4

SIZES AND DIMENSIONS ARE APPROXIMATE, ACTUAL MAY VARY.



ATTIC
20'8" x 26'6"



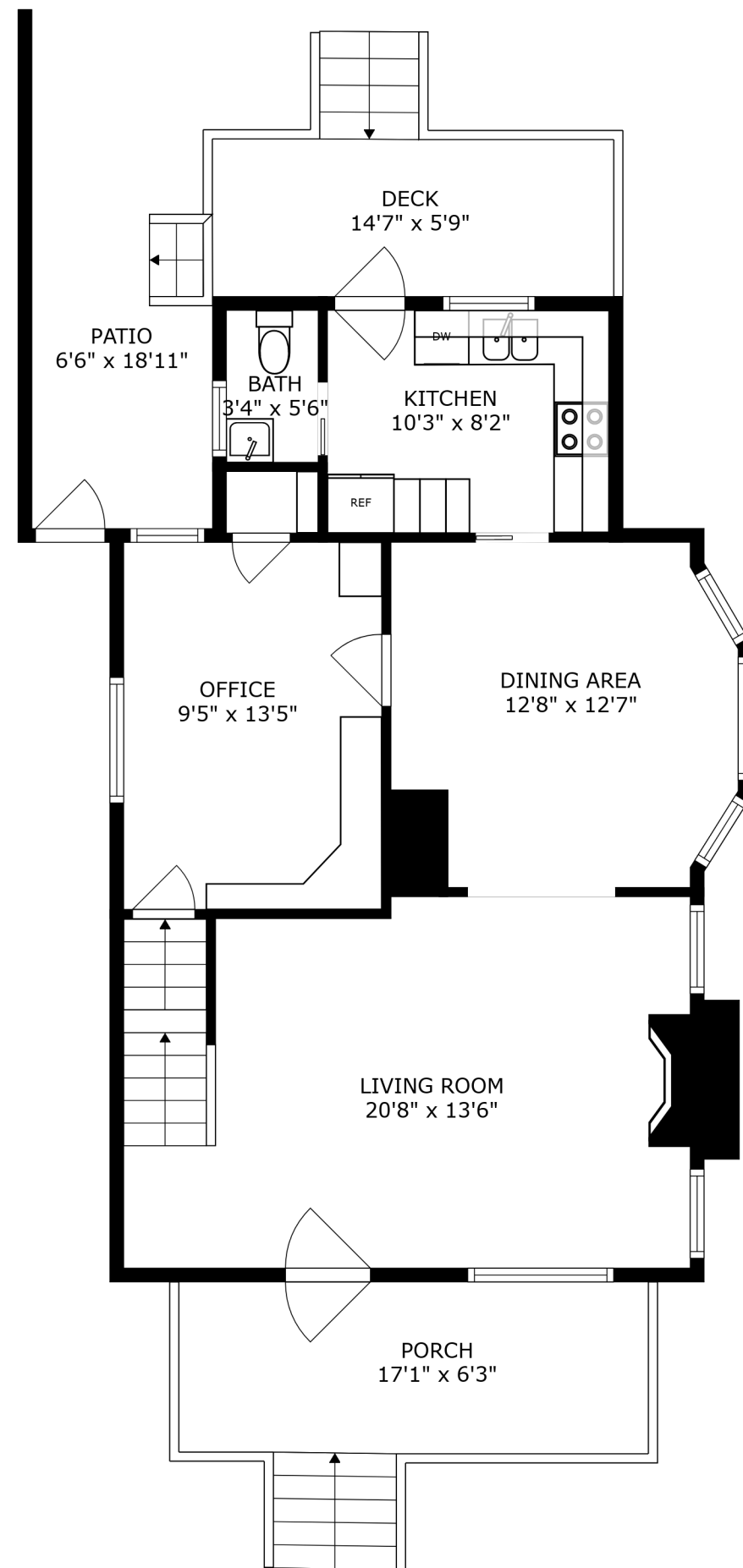
BATH
9'2" x 5'8"

BEDROOM
12'11" x 10'8"

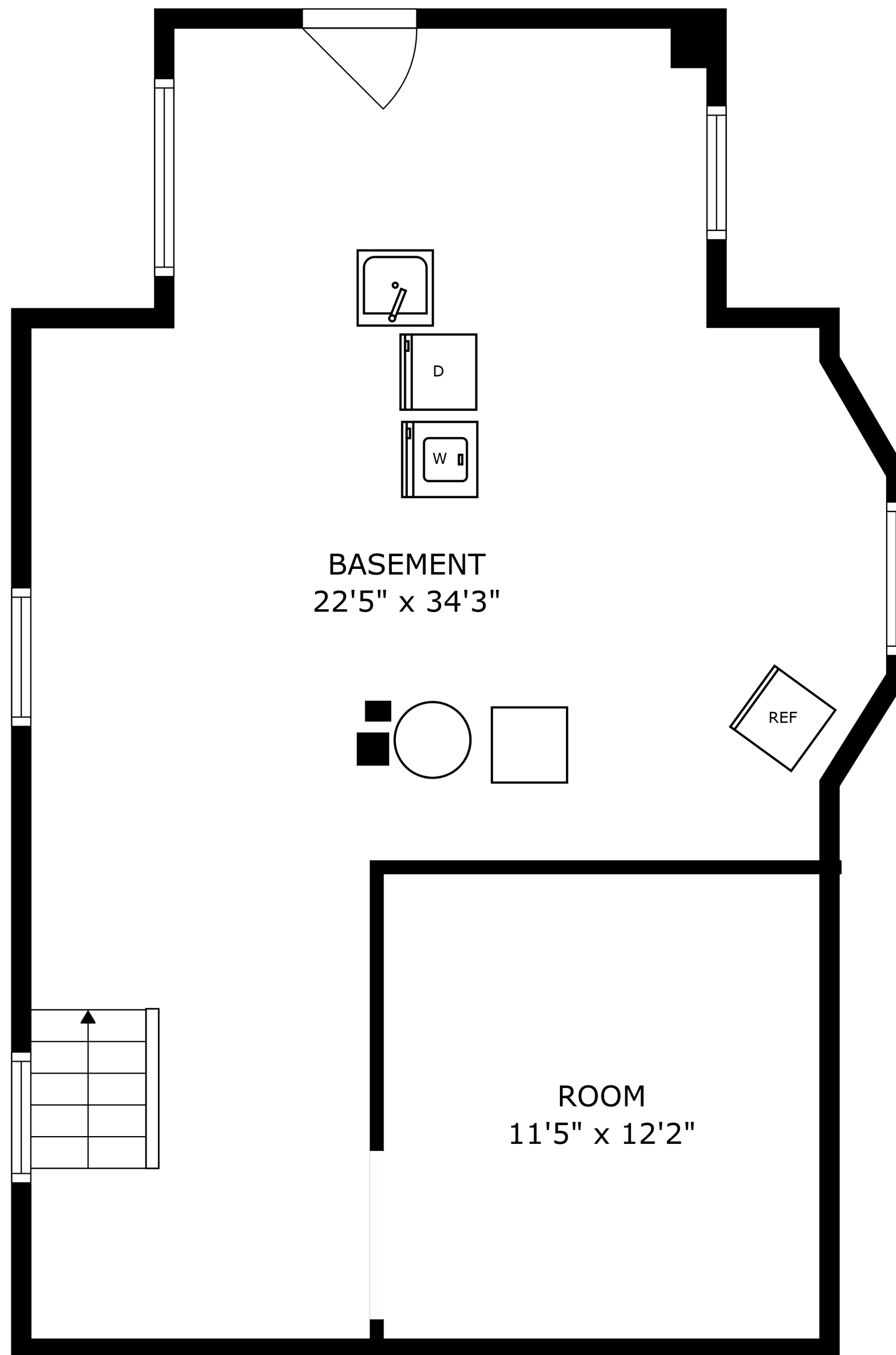
BEDROOM
9'2" x 10'9"

PRIMARY BEDROOM
11'2" x 13'10"

PATIO
14'0" x 22'8"



SIZES AND DIMENSIONS ARE APPROXIMATE, ACTUAL MAY VARY.



BASEMENT
22'5" x 34'3"

ROOM
11'5" x 12'2"

SIZES AND DIMENSIONS ARE APPROXIMATE, ACTUAL MAY VARY.