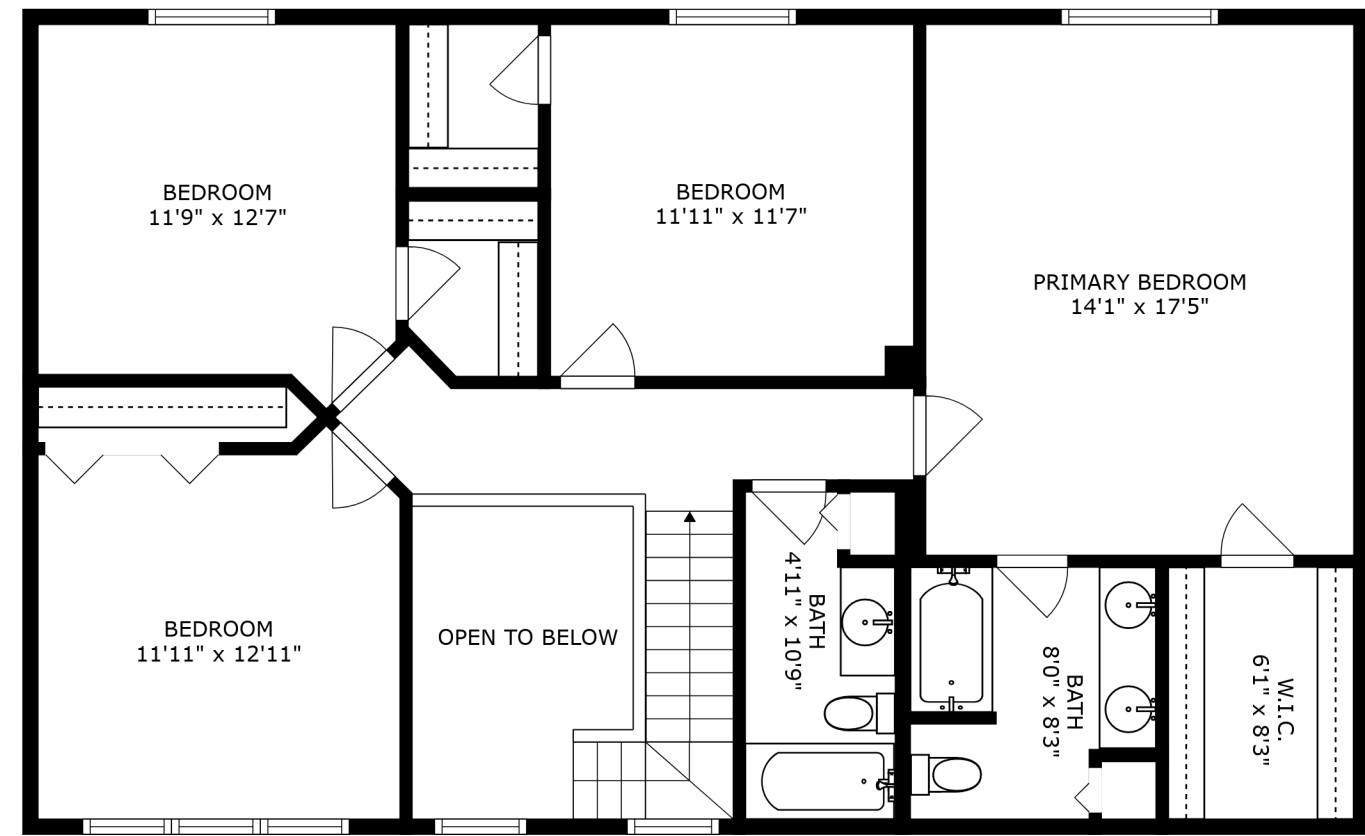
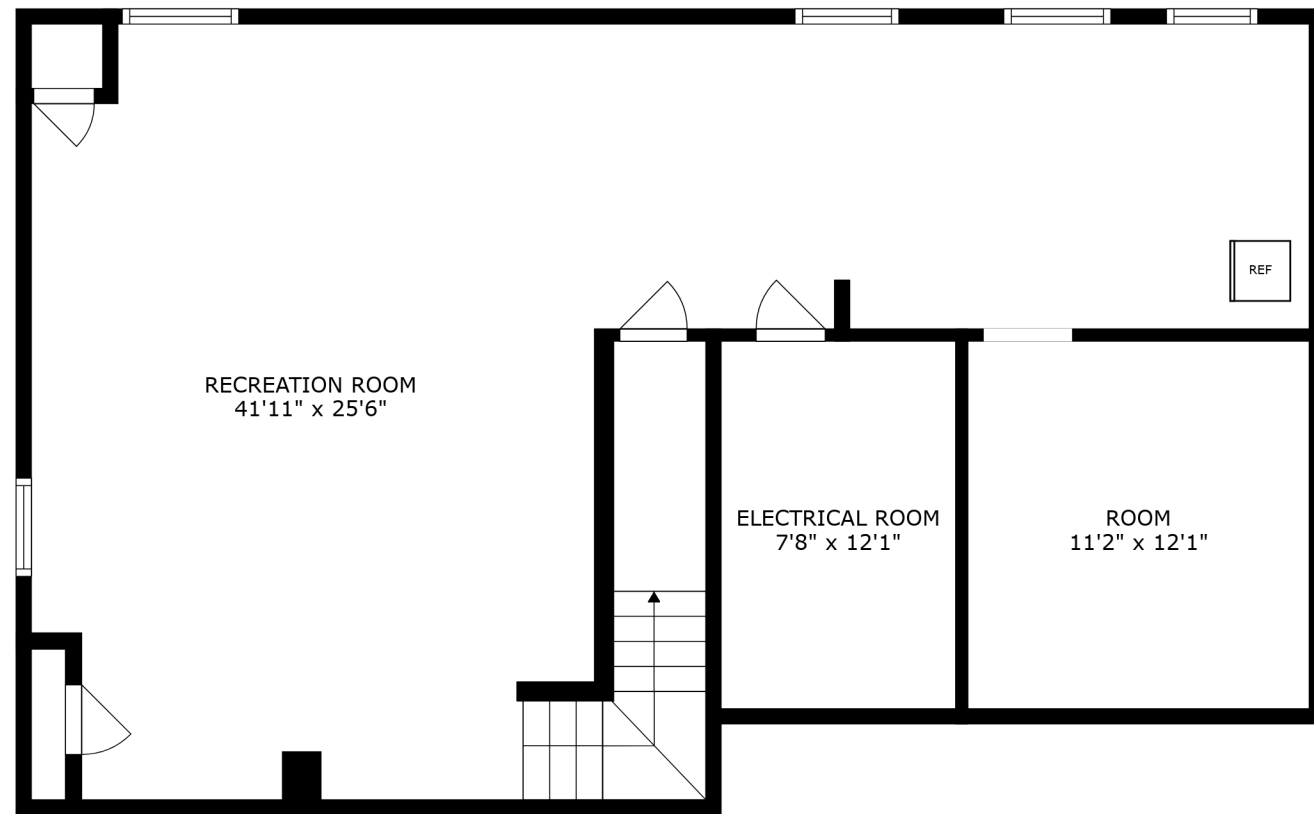


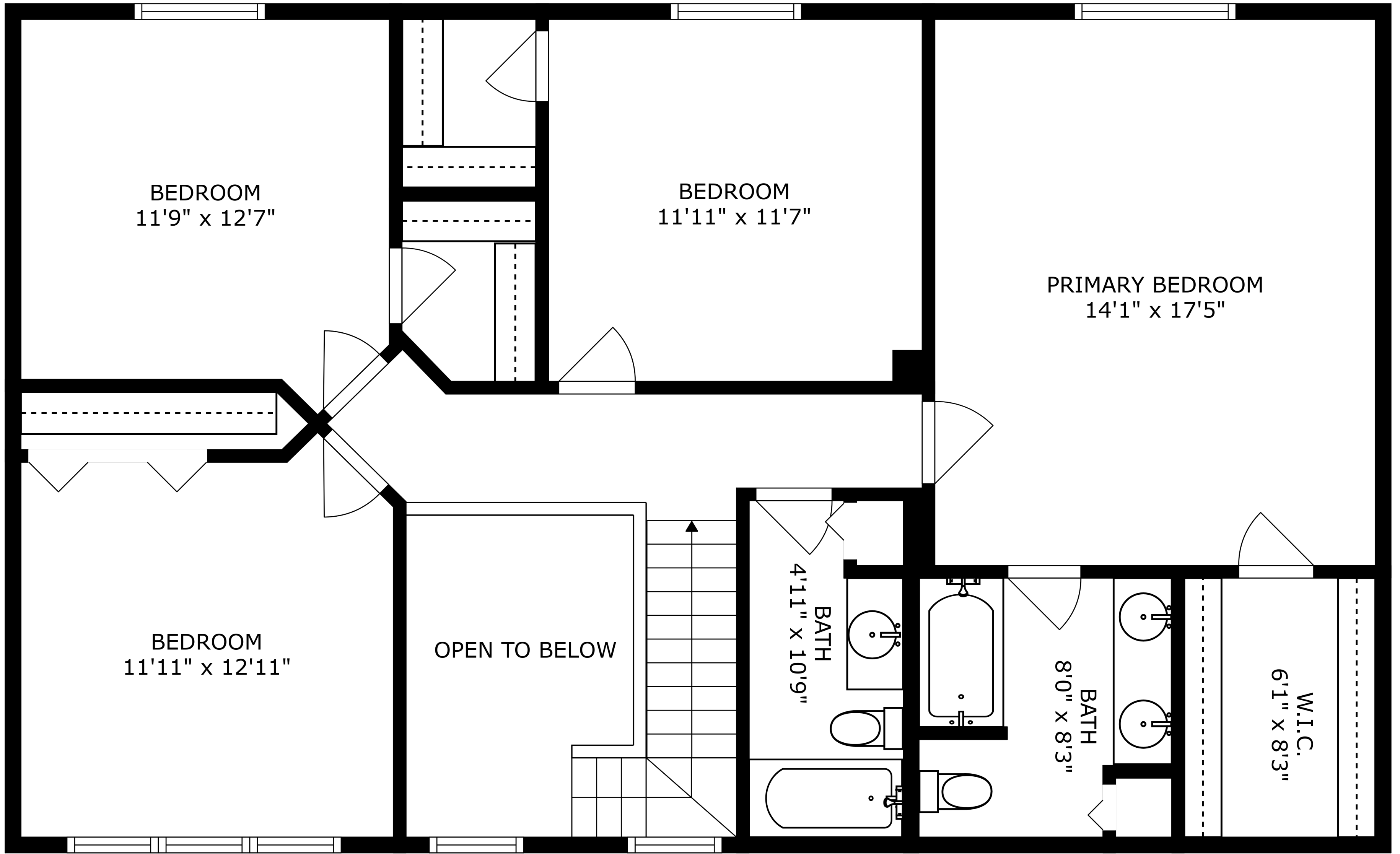
FLOOR 2



FLOOR 3



FLOOR 1



BEDROOM  
11'9" x 12'7"

BEDROOM  
11'11" x 11'7"

PRIMARY BEDROOM  
14'1" x 17'5"

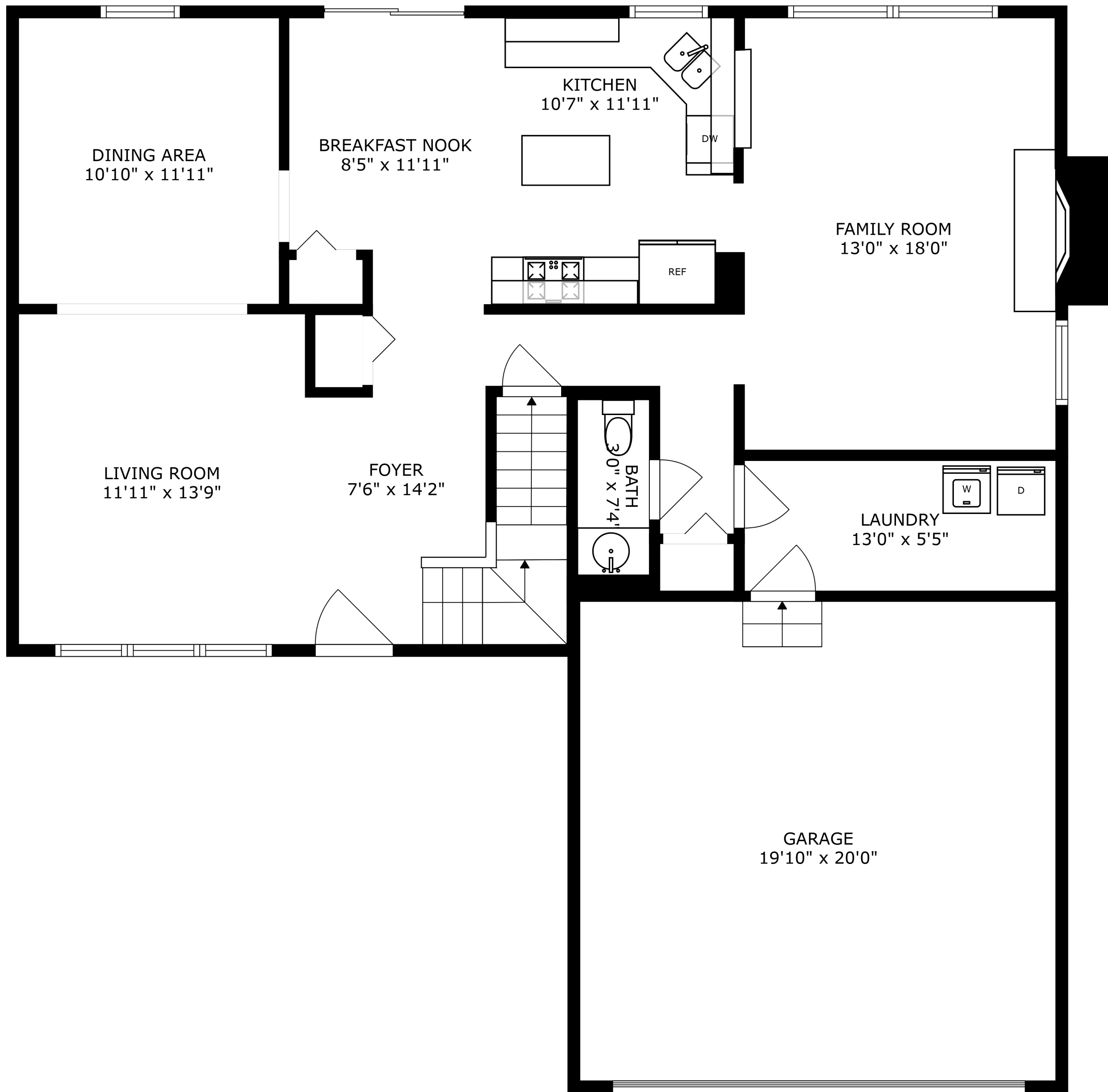
BEDROOM  
11'11" x 12'11"

OPEN TO BELOW

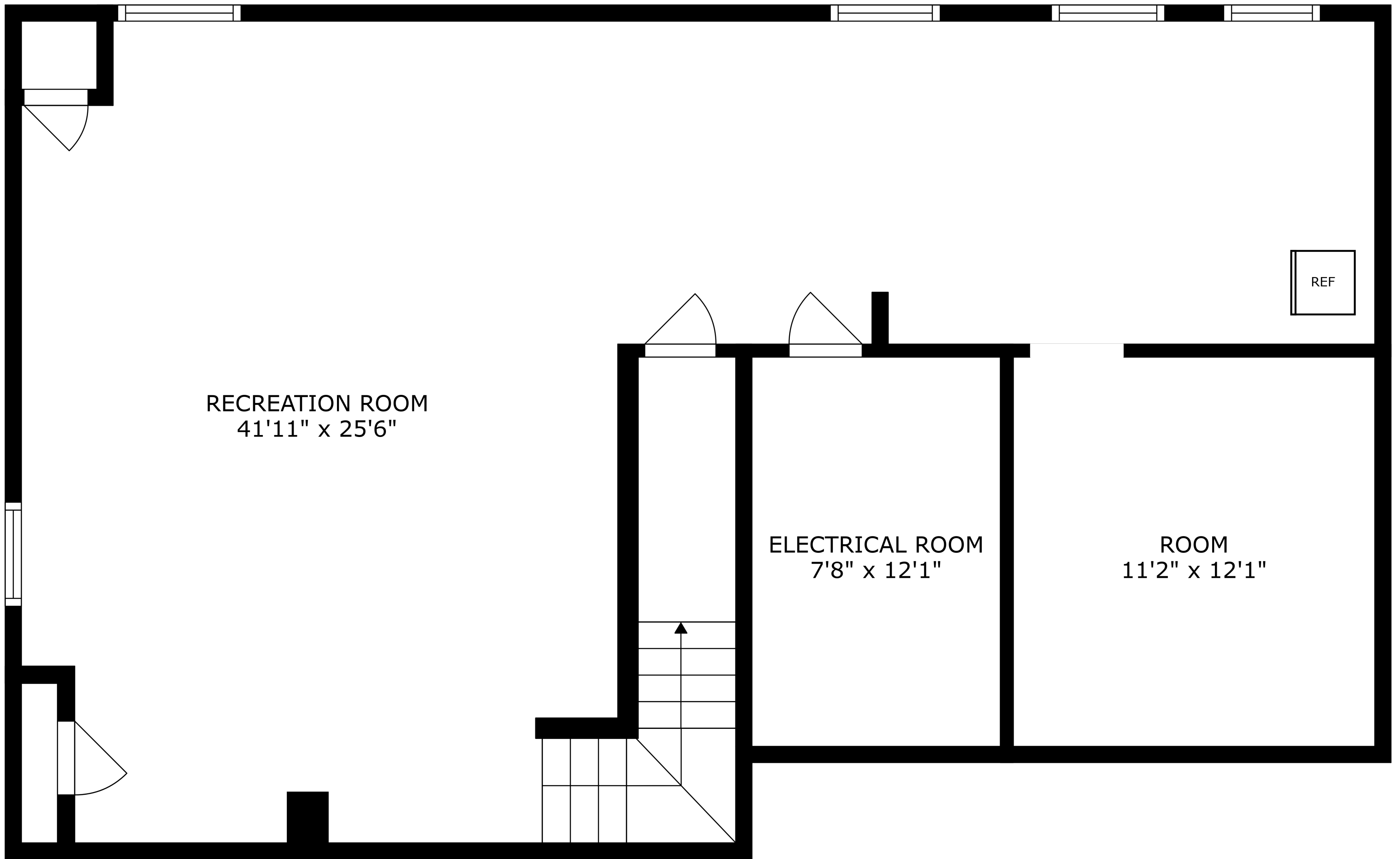
BATH  
4'11" x 10'9"

BATH  
8'0" x 8'3"

W.I.C.  
6'1" x 8'3"



SIZES AND DIMENSIONS ARE APPROXIMATE, ACTUAL MAY VARY.



SIZES AND DIMENSIONS ARE APPROXIMATE, ACTUAL MAY VARY.