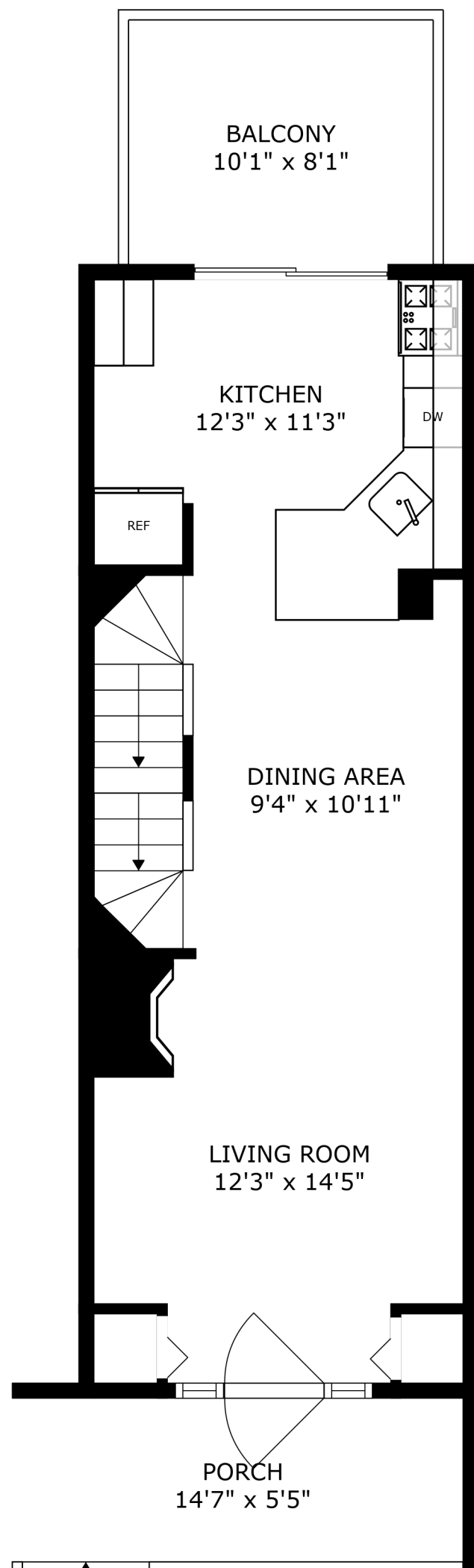
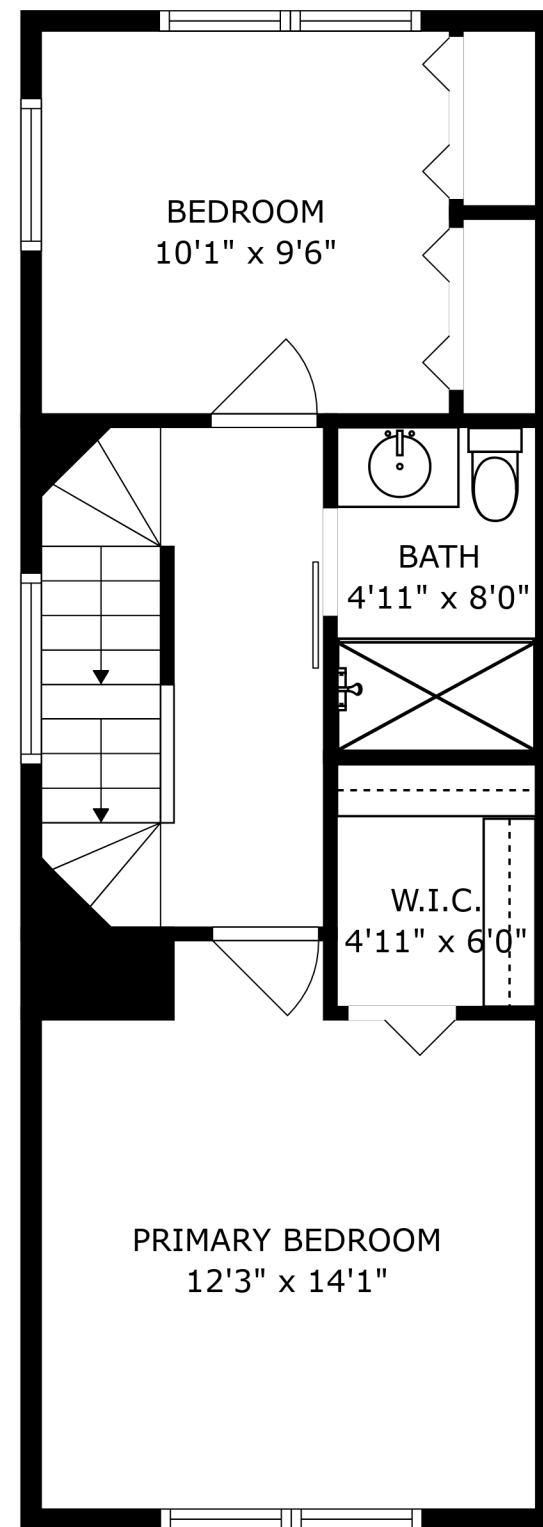


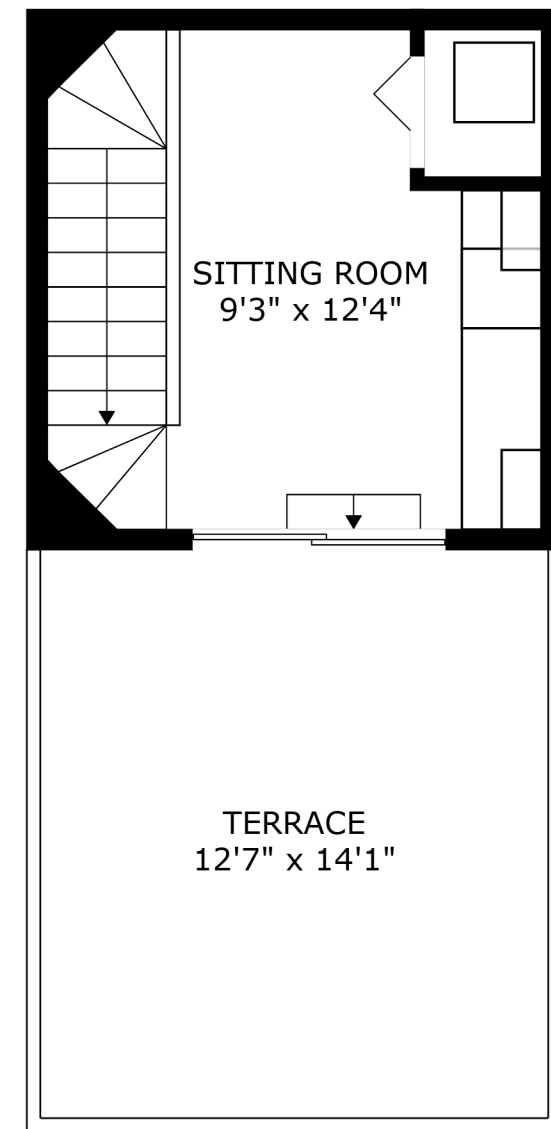
FLOOR 1



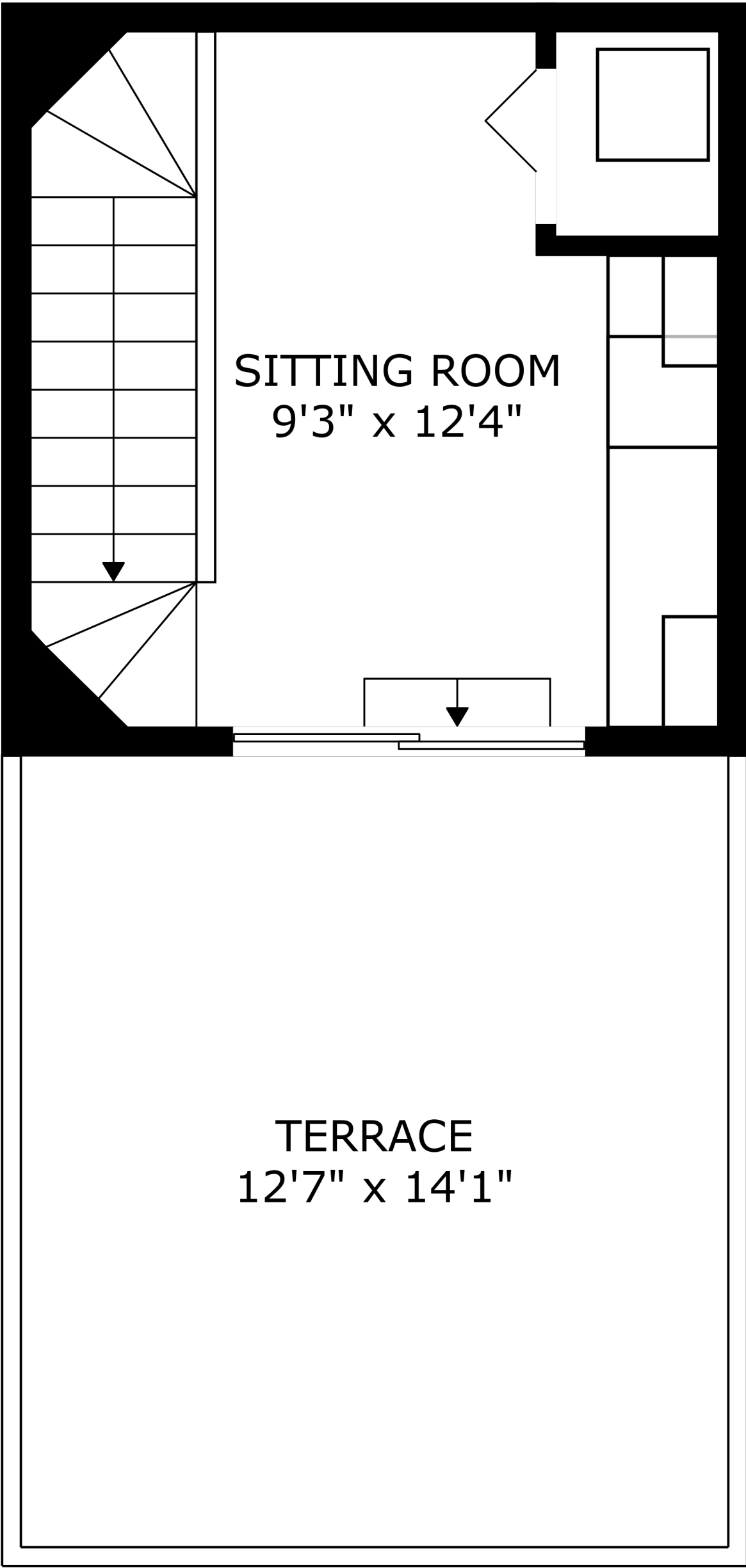
FLOOR 2



FLOOR 3

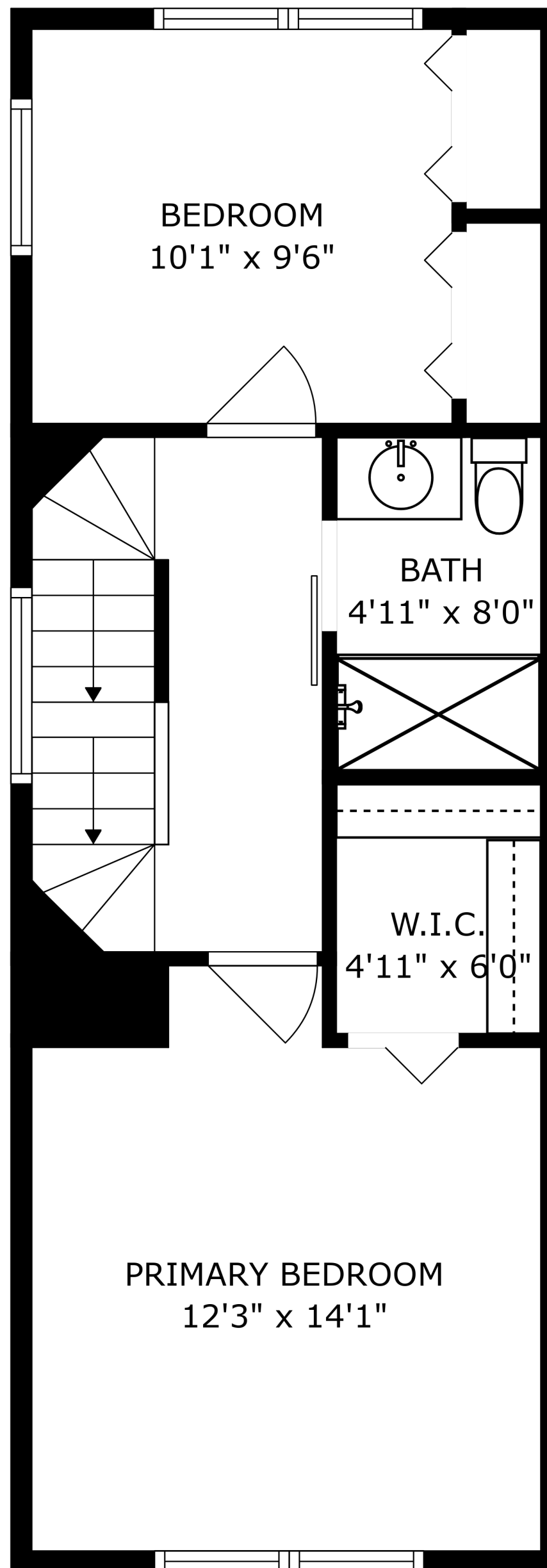


FLOOR 4

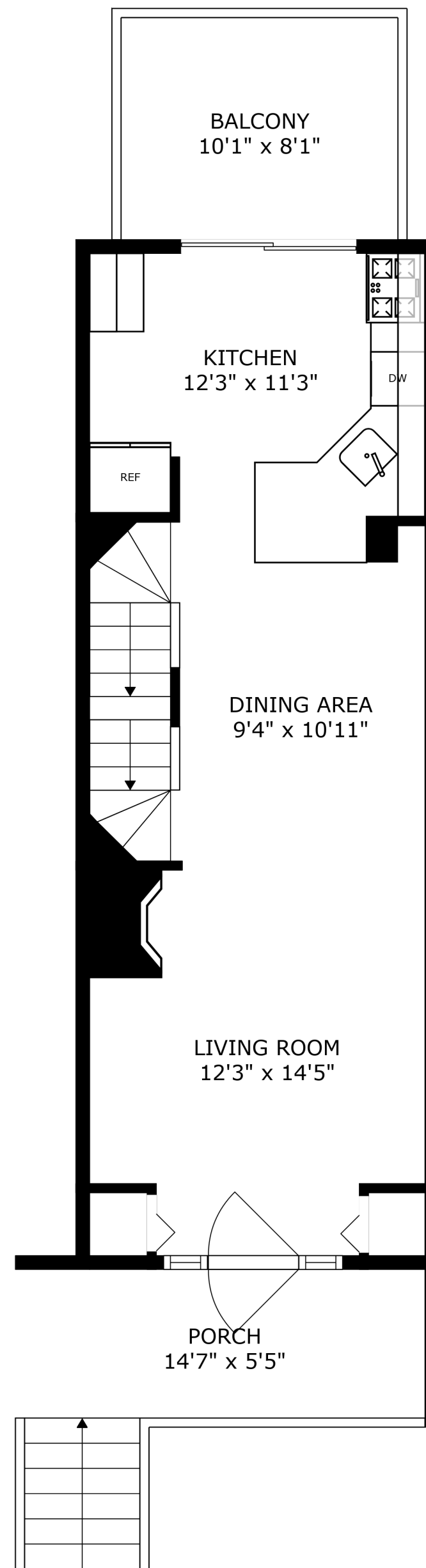


SITTING ROOM  
9'3" x 12'4"

TERRACE  
12'7" x 14'1"



SIZES AND DIMENSIONS ARE APPROXIMATE, ACTUAL MAY VARY.



SIZES AND DIMENSIONS ARE APPROXIMATE, ACTUAL MAY VARY.

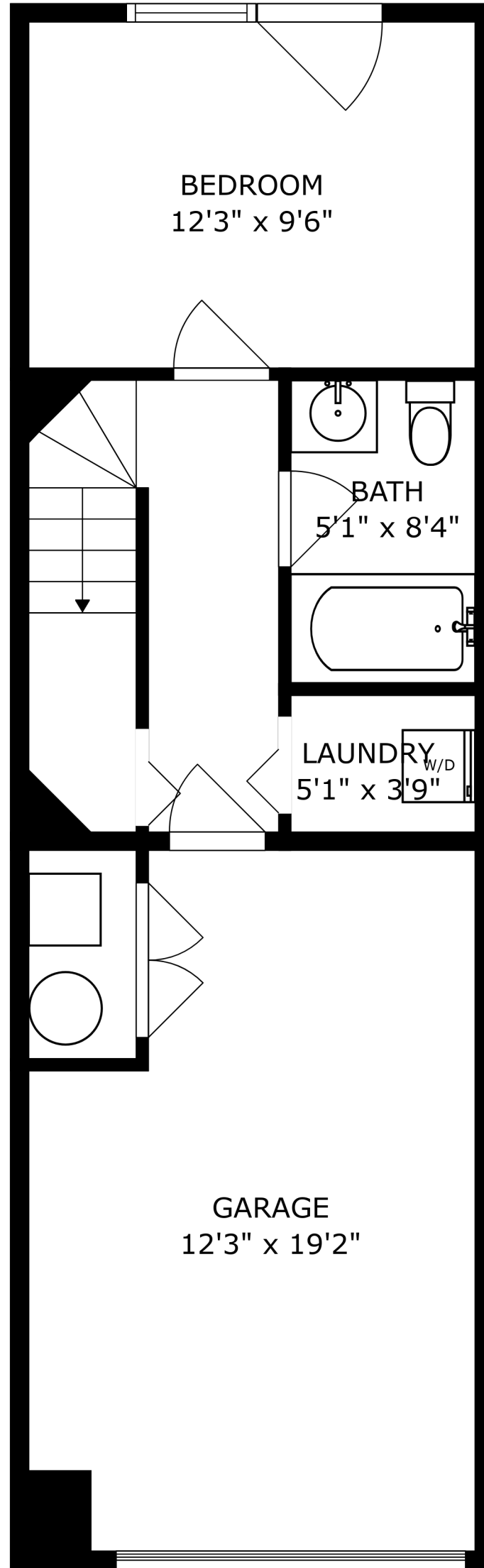
PATIO  
8'5" x 4'7"

BEDROOM  
12'3" x 9'6"

BATH  
5'1" x 8'4"

LAUNDRY  
5'1" x 3'9"  
W/D

GARAGE  
12'3" x 19'2"



SIZES AND DIMENSIONS ARE APPROXIMATE, ACTUAL MAY VARY.