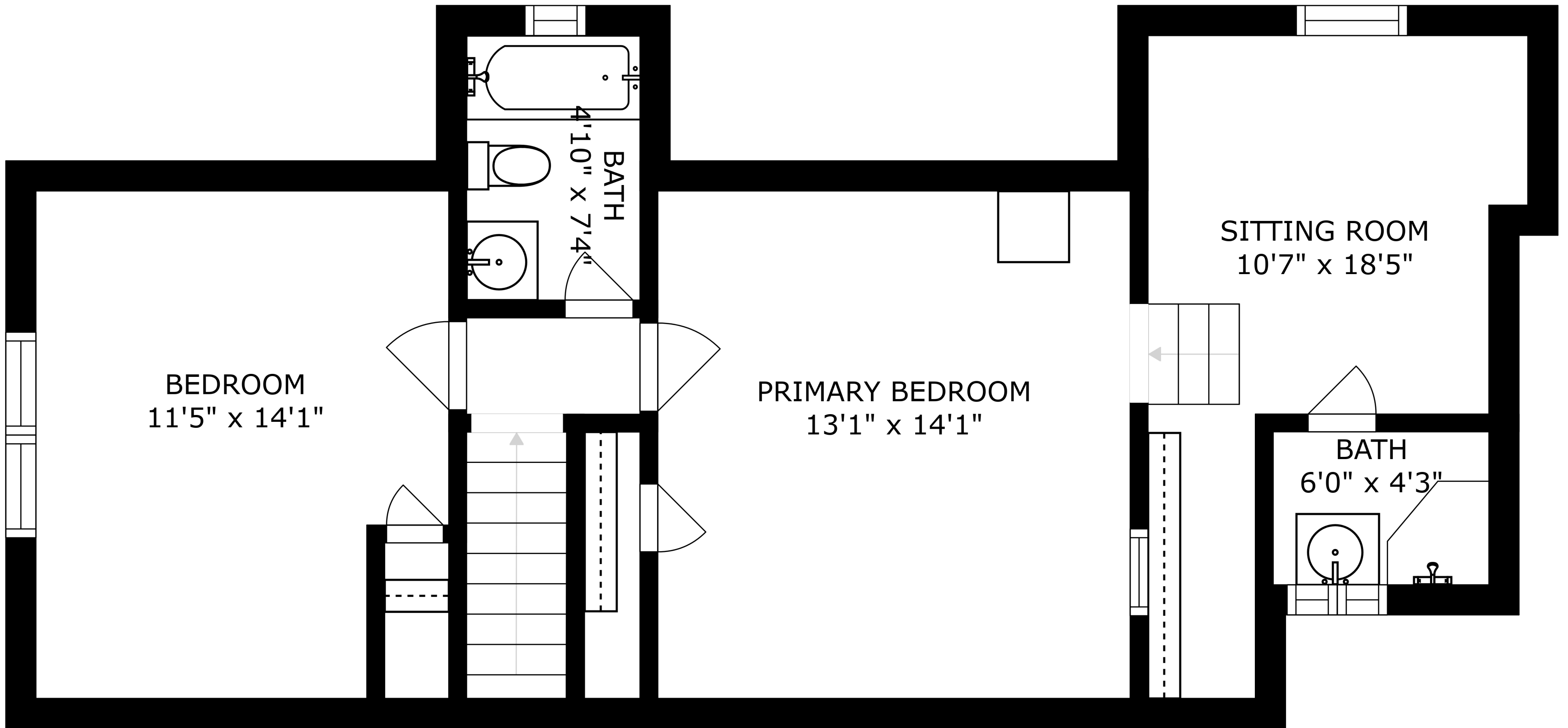


SIZES AND DIMENSIONS ARE APPROXIMATE, ACTUAL MAY VARY.



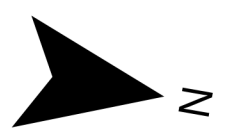
BEDROOM  
11'5" x 14'1"

PRIMARY BEDROOM  
13'1" x 14'1"

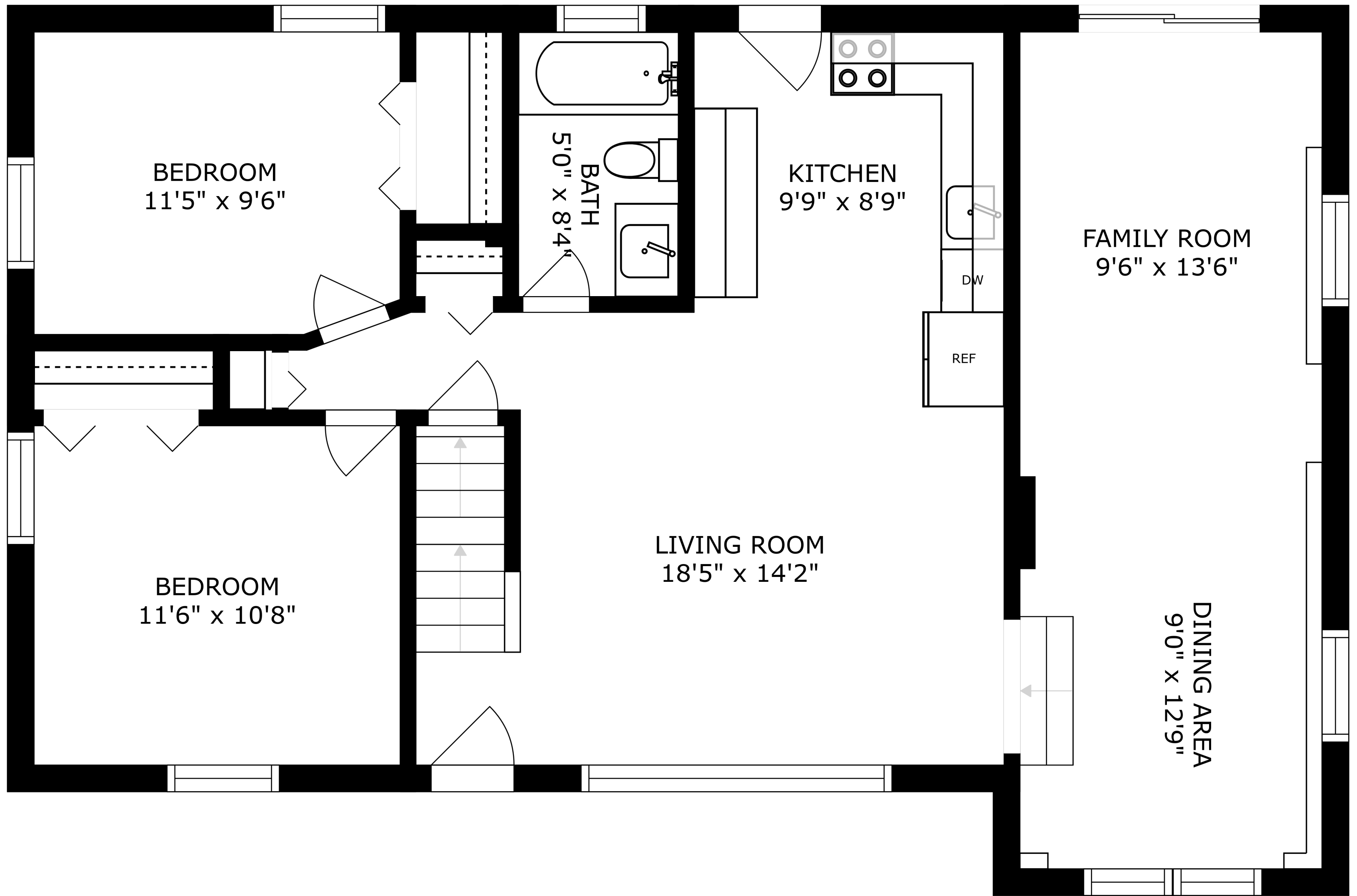
SITTING ROOM  
10'7" x 18'5"

BATH  
4'10" x 7'4"

BATH  
6'0" x 4'3"

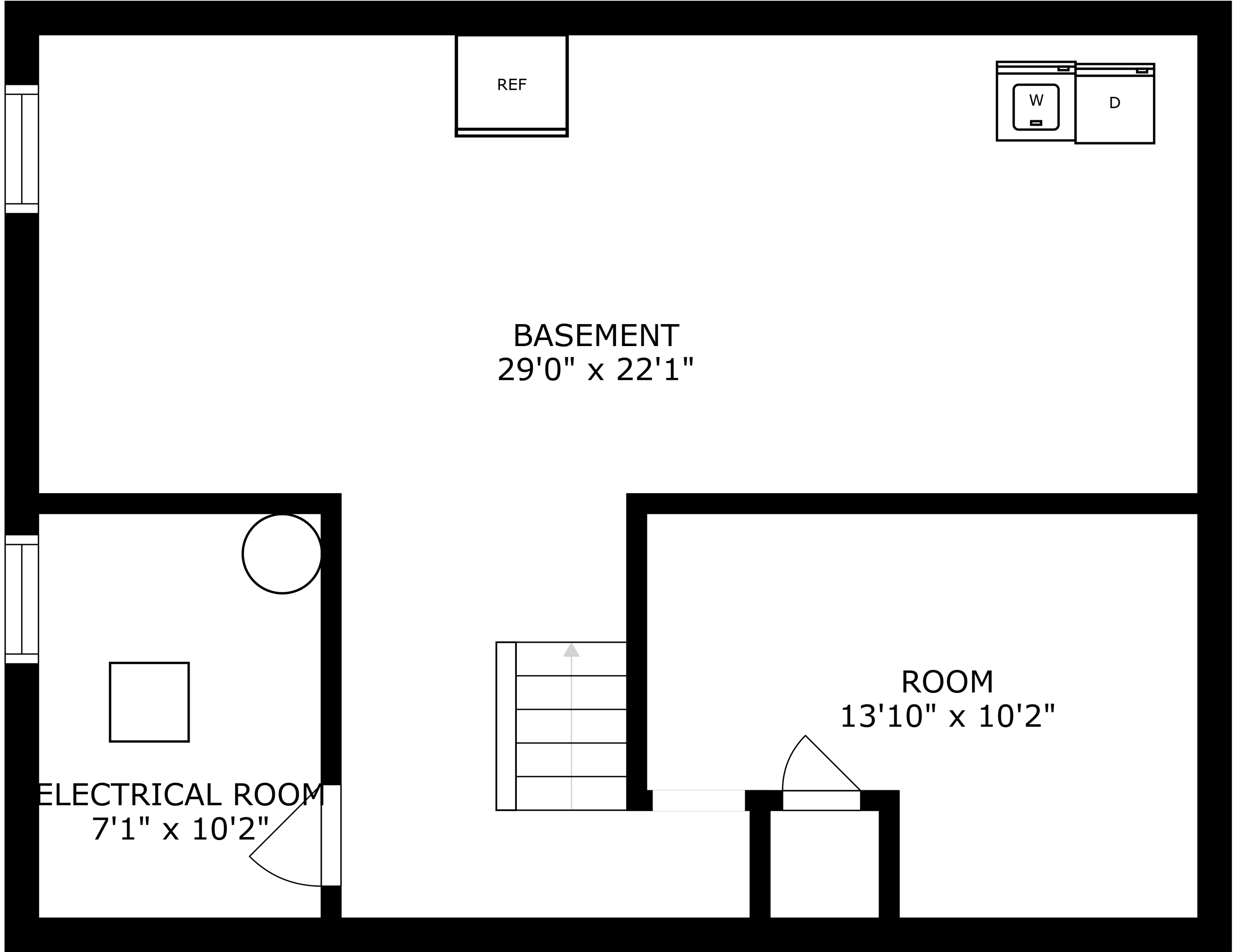


SIZES AND DIMENSIONS ARE APPROXIMATE, ACTUAL MAY VARY.



SIZES AND DIMENSIONS ARE APPROXIMATE, ACTUAL MAY VARY.





BASEMENT  
29'0" x 22'1"

ELECTRICAL ROOM  
7'1" x 10'2"

ROOM  
13'10" x 10'2"

SIZES AND DIMENSIONS ARE APPROXIMATE, ACTUAL MAY VARY.

