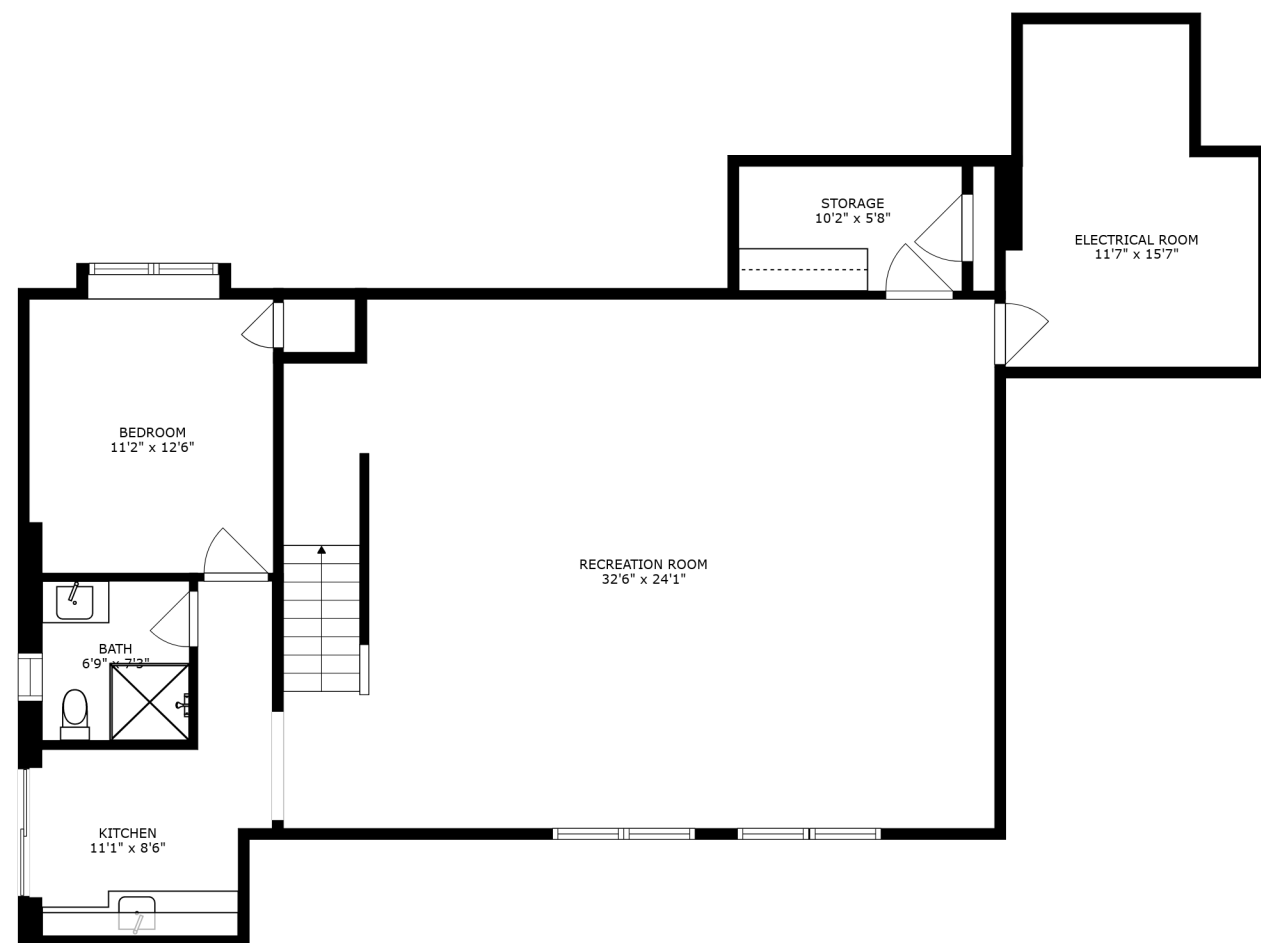
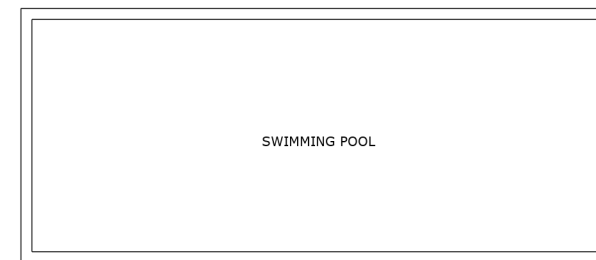
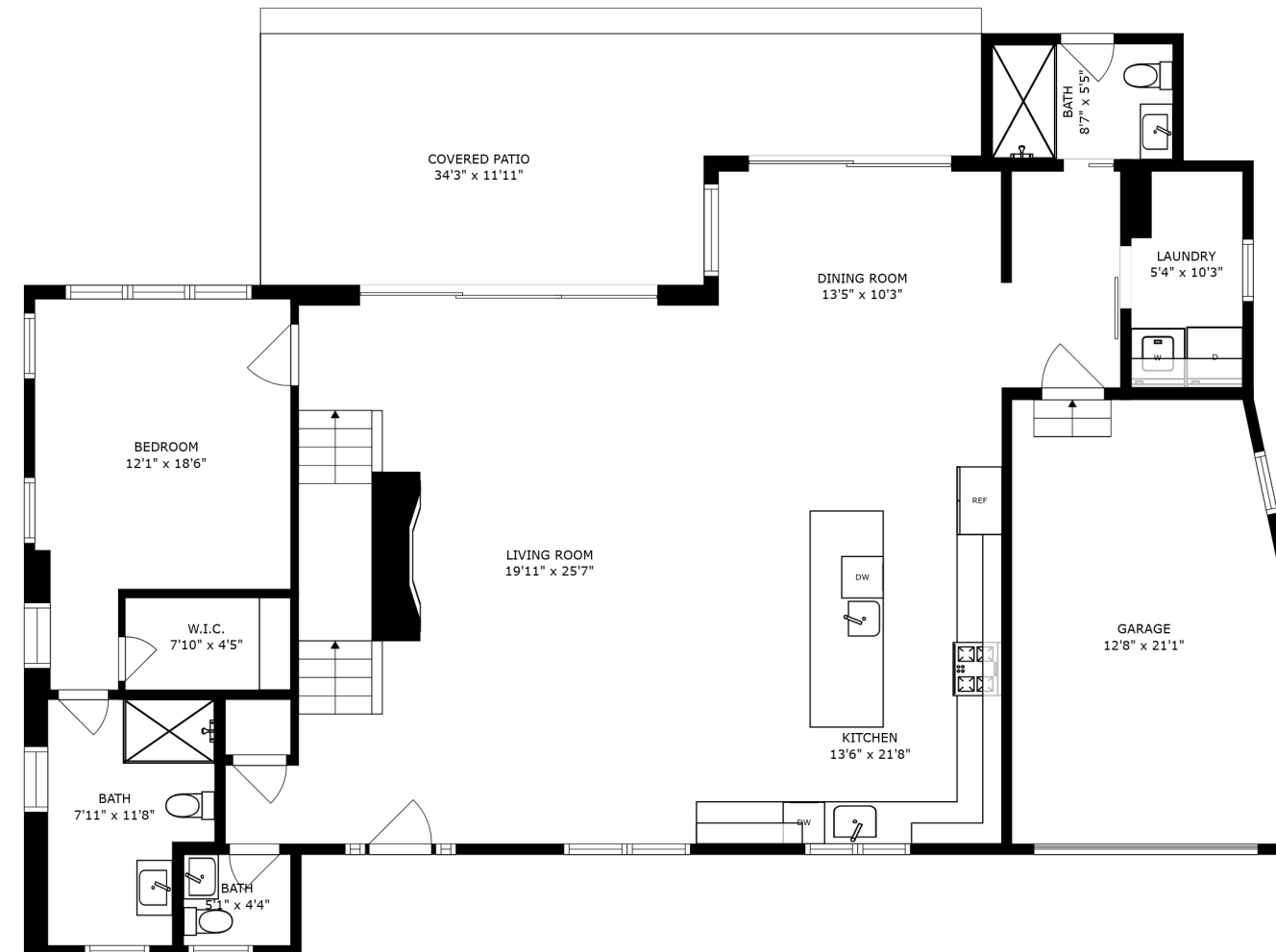


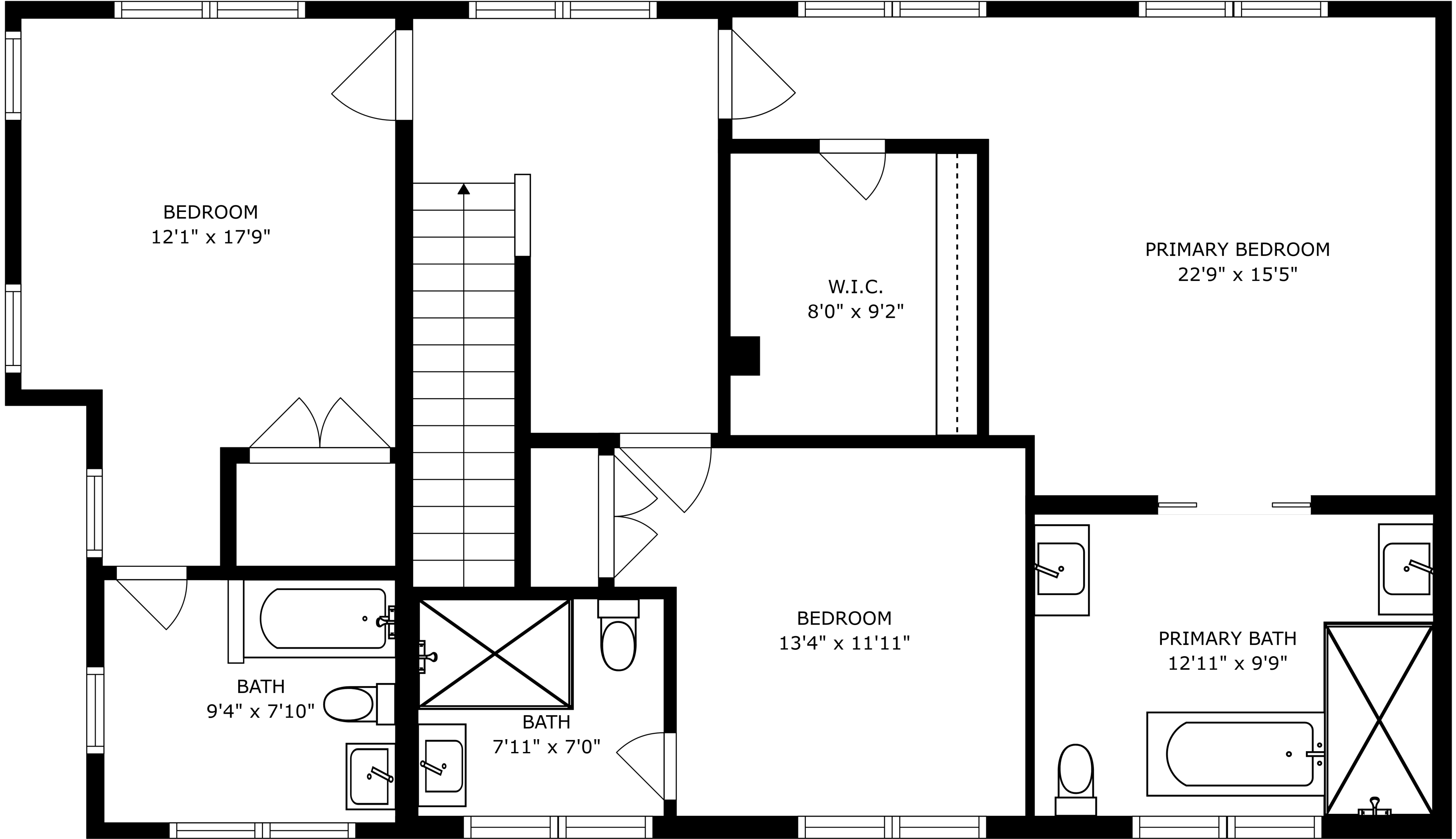
FLOOR 3



FLOOR 1



FLOOR 2



BEDROOM
12'1" x 17'9"

PRIMARY BEDROOM
22'9" x 15'5"

W.I.C.
8'0" x 9'2"

BEDROOM
13'4" x 11'11"

BATH
9'4" x 7'10"

PRIMARY BATH
12'11" x 9'9"

BATH
7'11" x 7'0"

