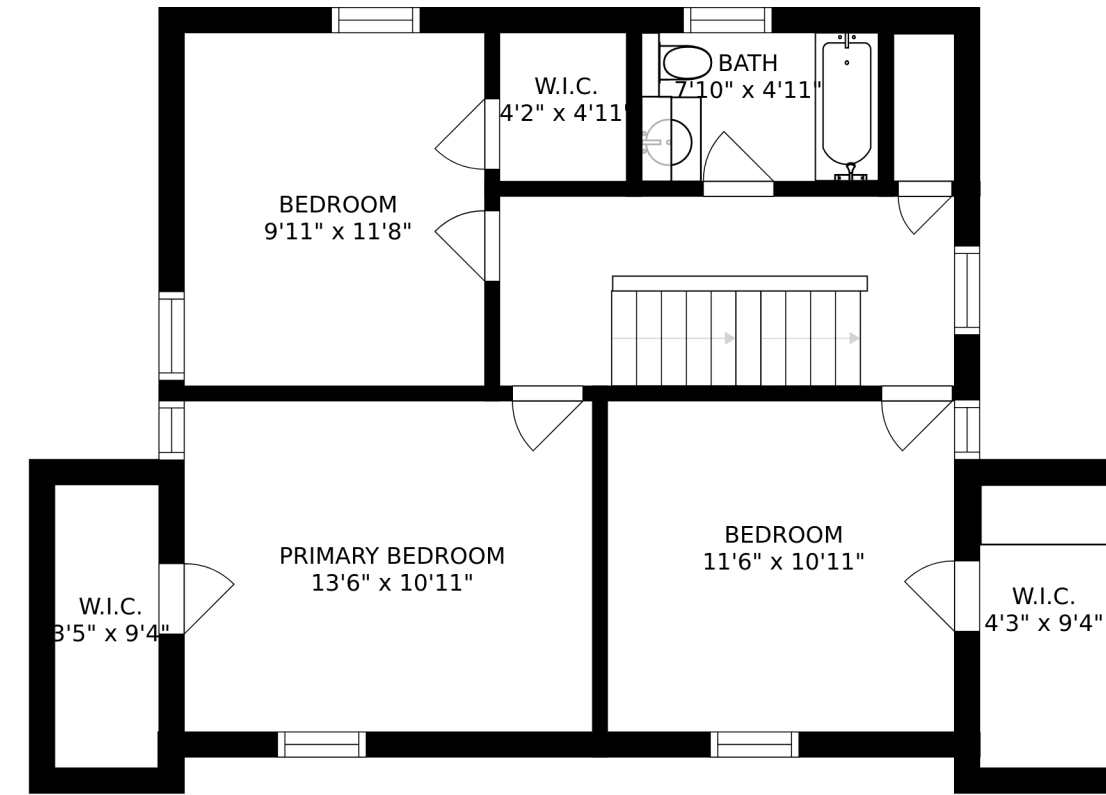
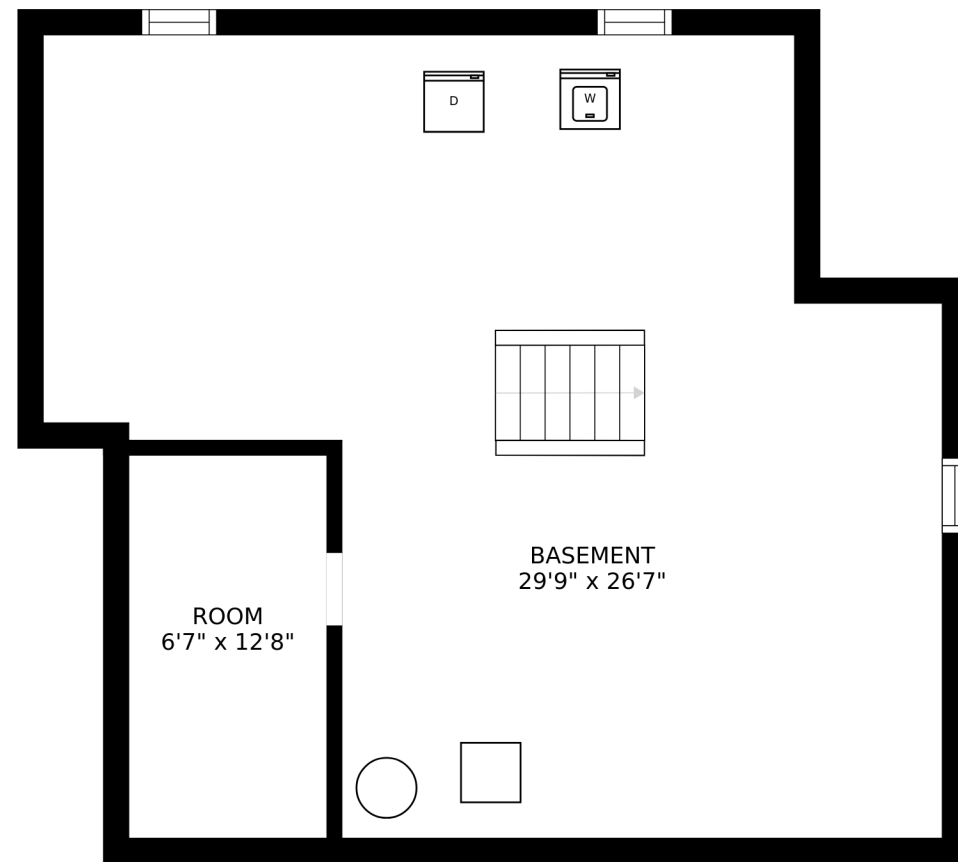


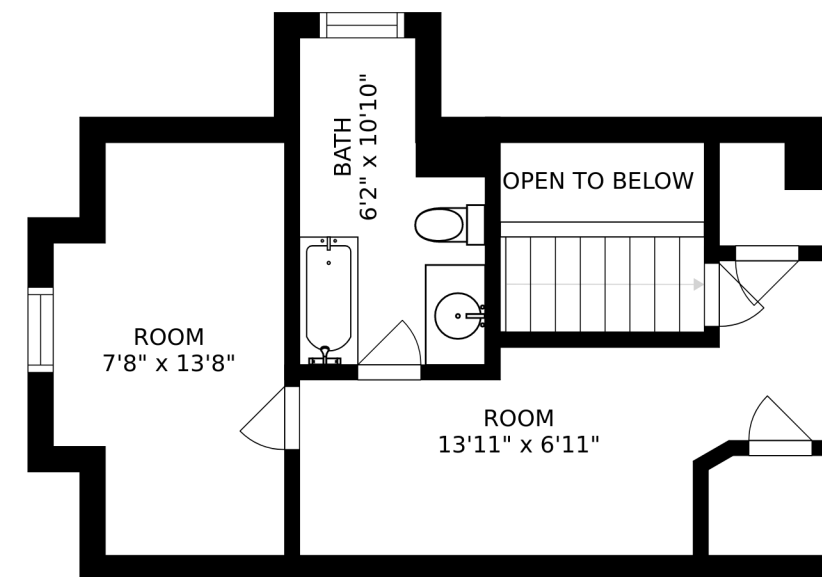
FLOOR 2



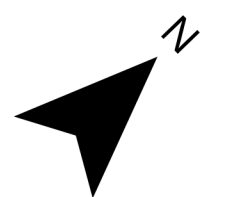
FLOOR 3

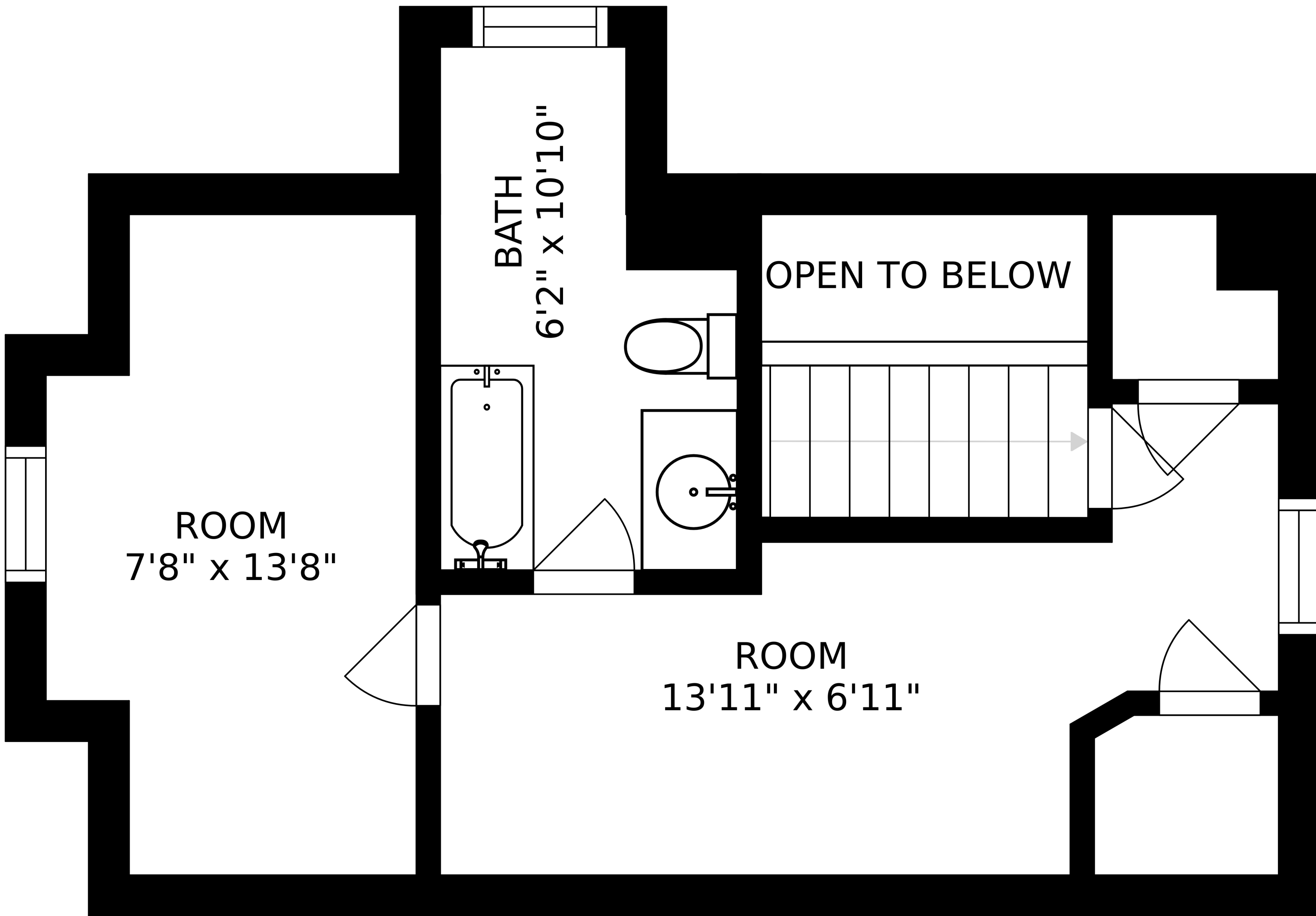


FLOOR 1



FLOOR 4



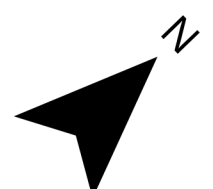


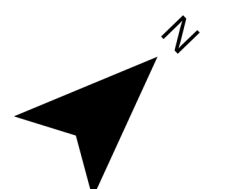
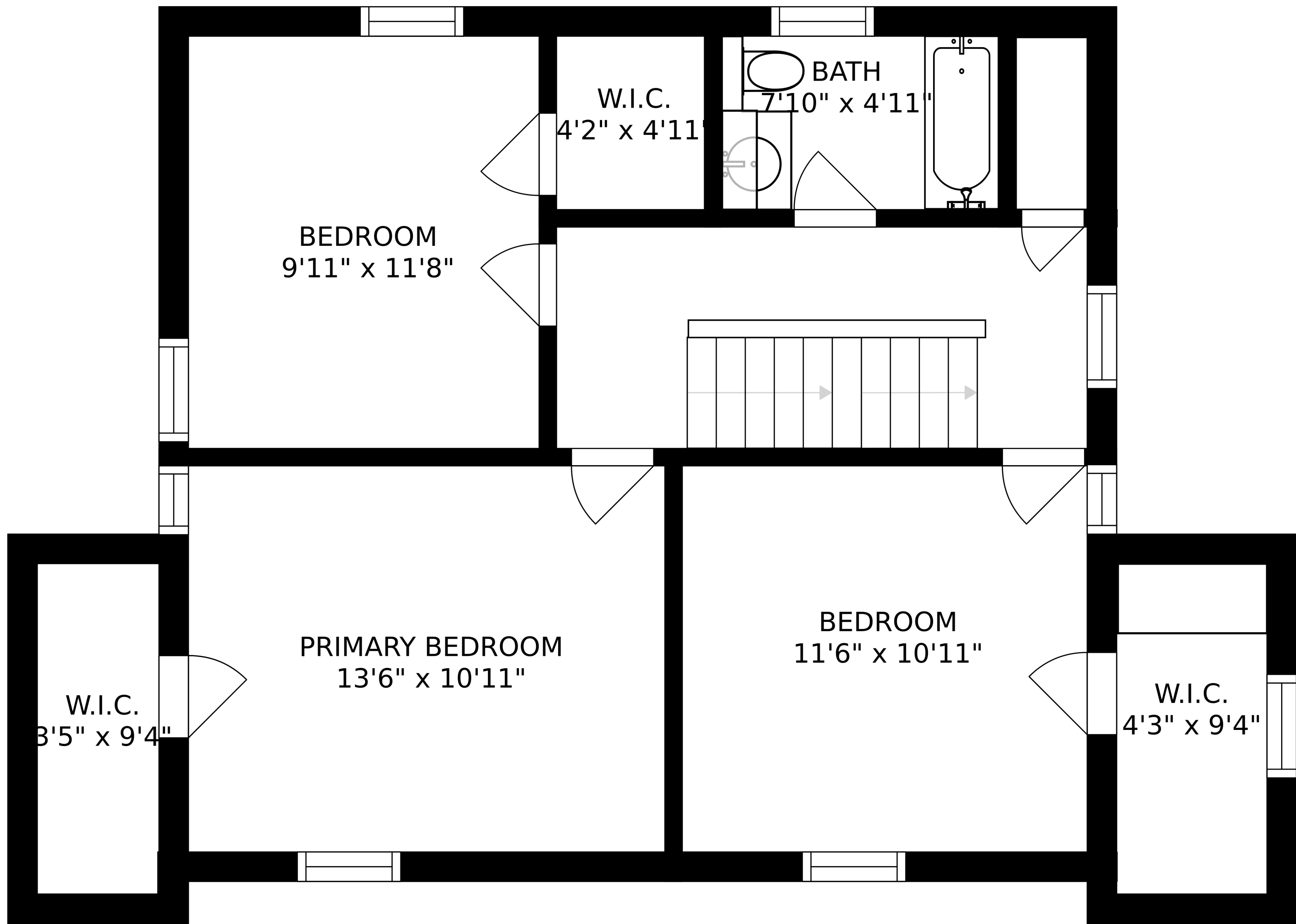
ROOM  
7'8" x 13'8"

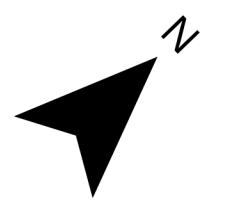
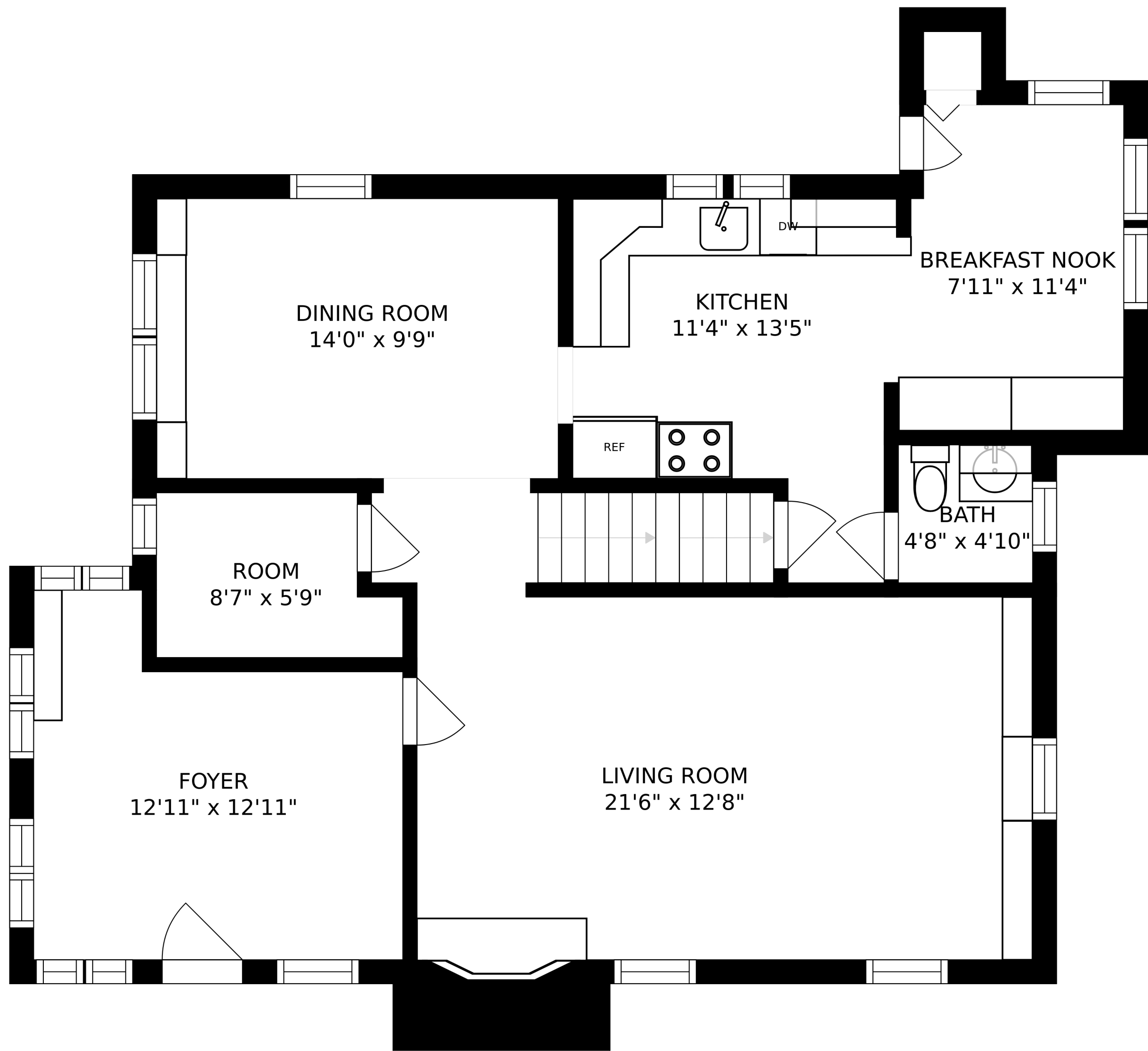
BATH  
6'2" x 10'10"

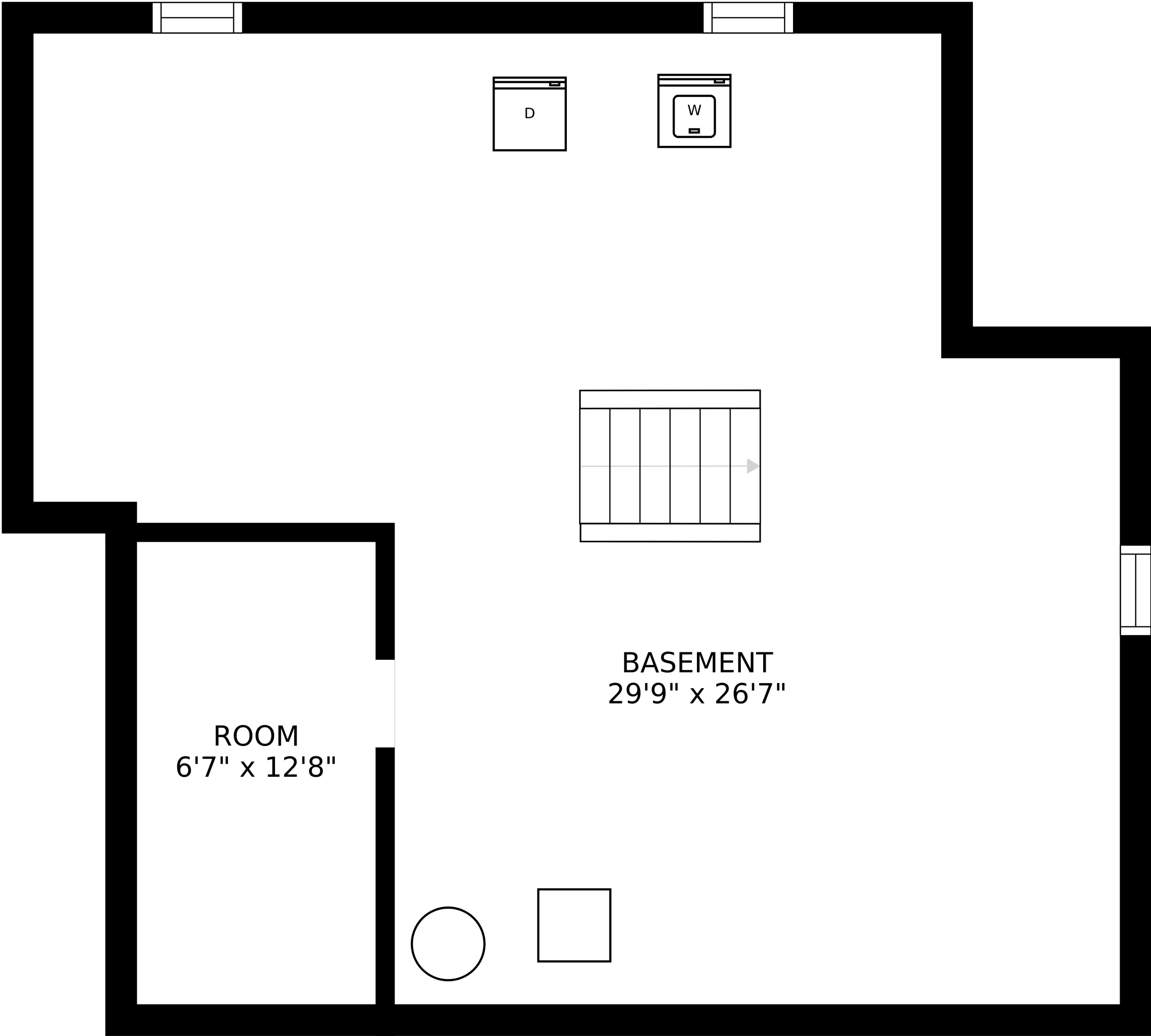
OPEN TO BELOW

ROOM  
13'11" x 6'11"









ROOM  
6'7" x 12'8"

BASEMENT  
29'9" x 26'7"

