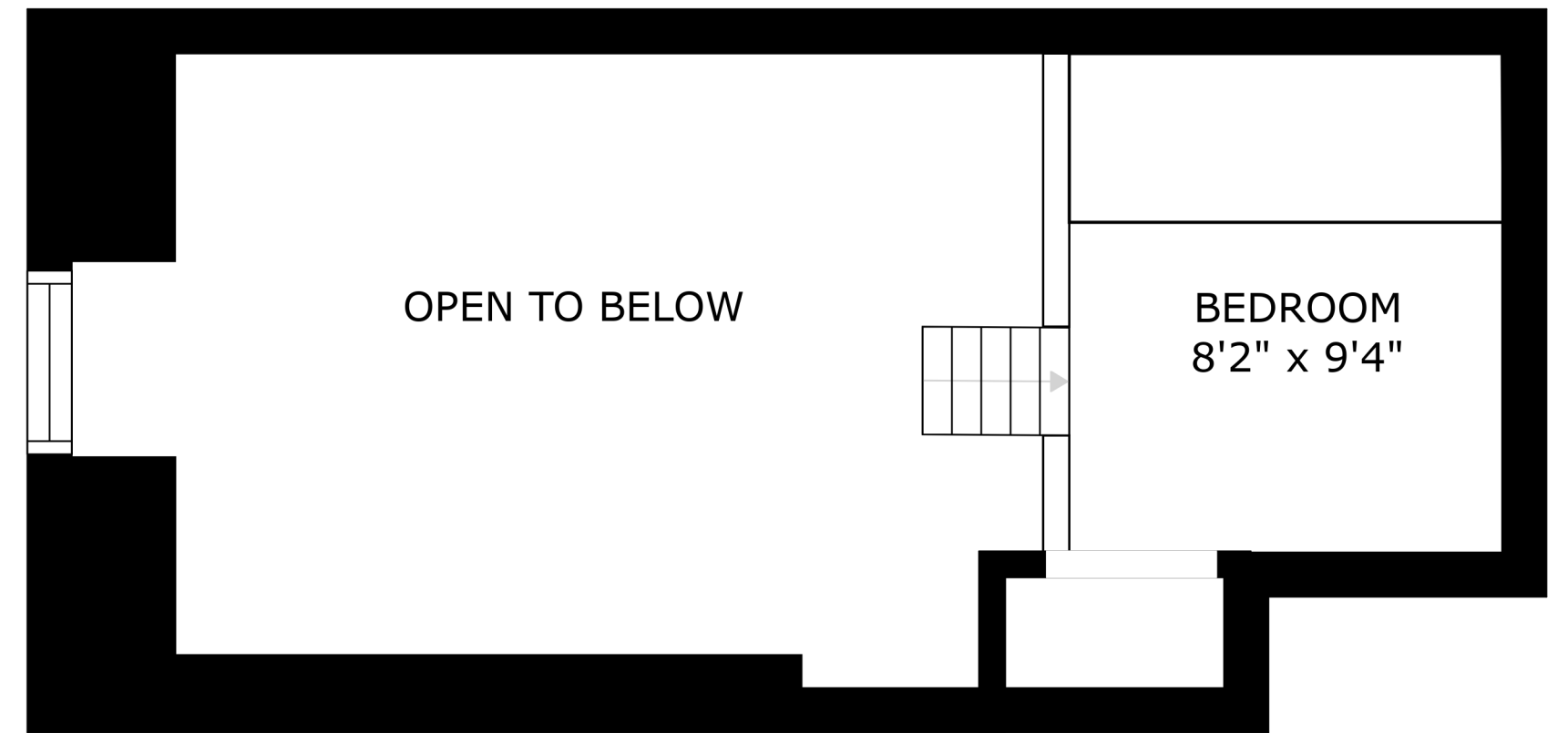
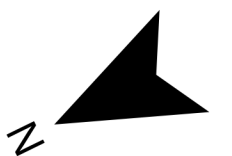


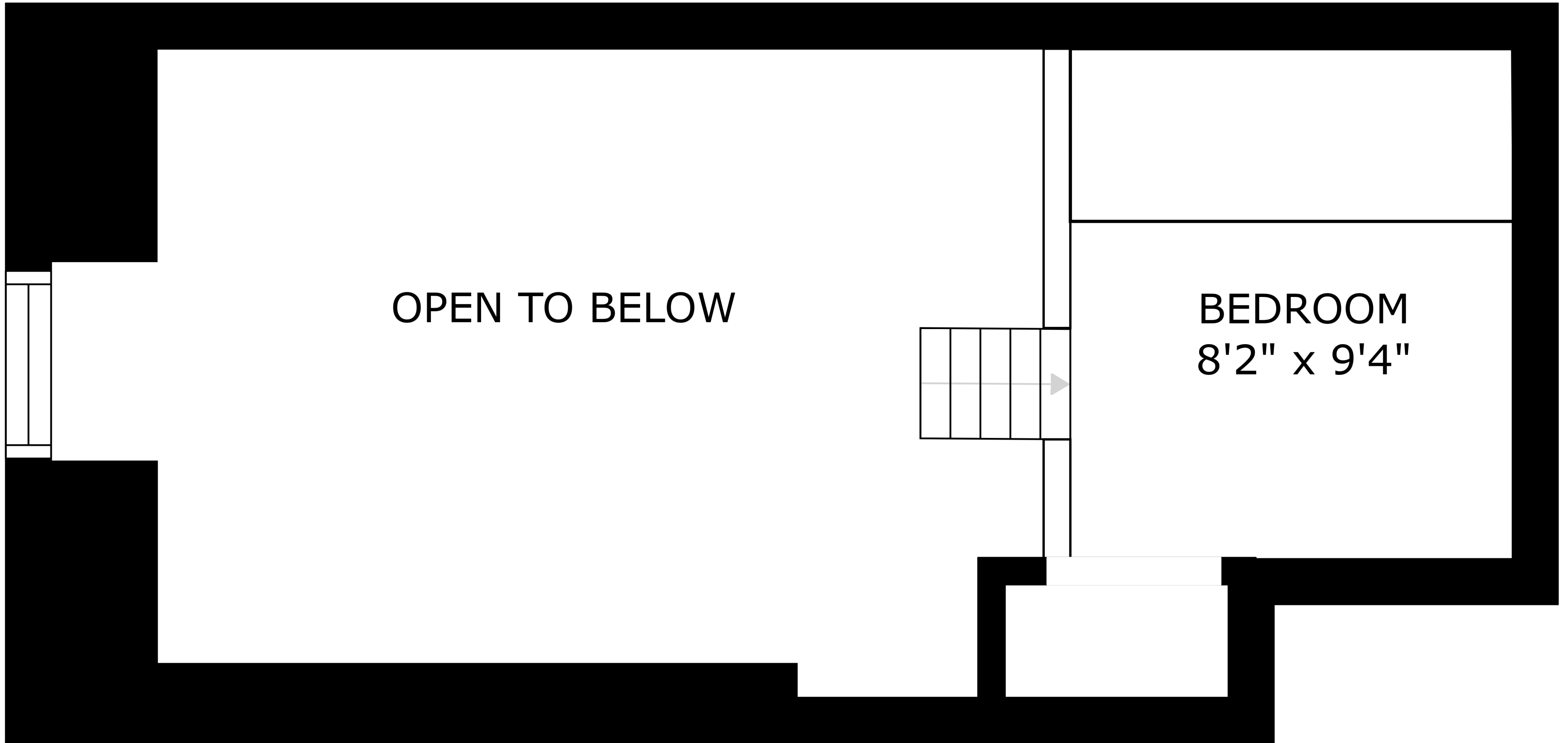
FLOOR 1



FLOOR 2

SIZES AND DIMENSIONS ARE APPROXIMATE, ACTUAL MAY VARY.

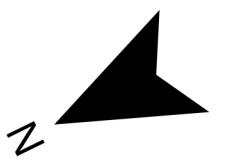


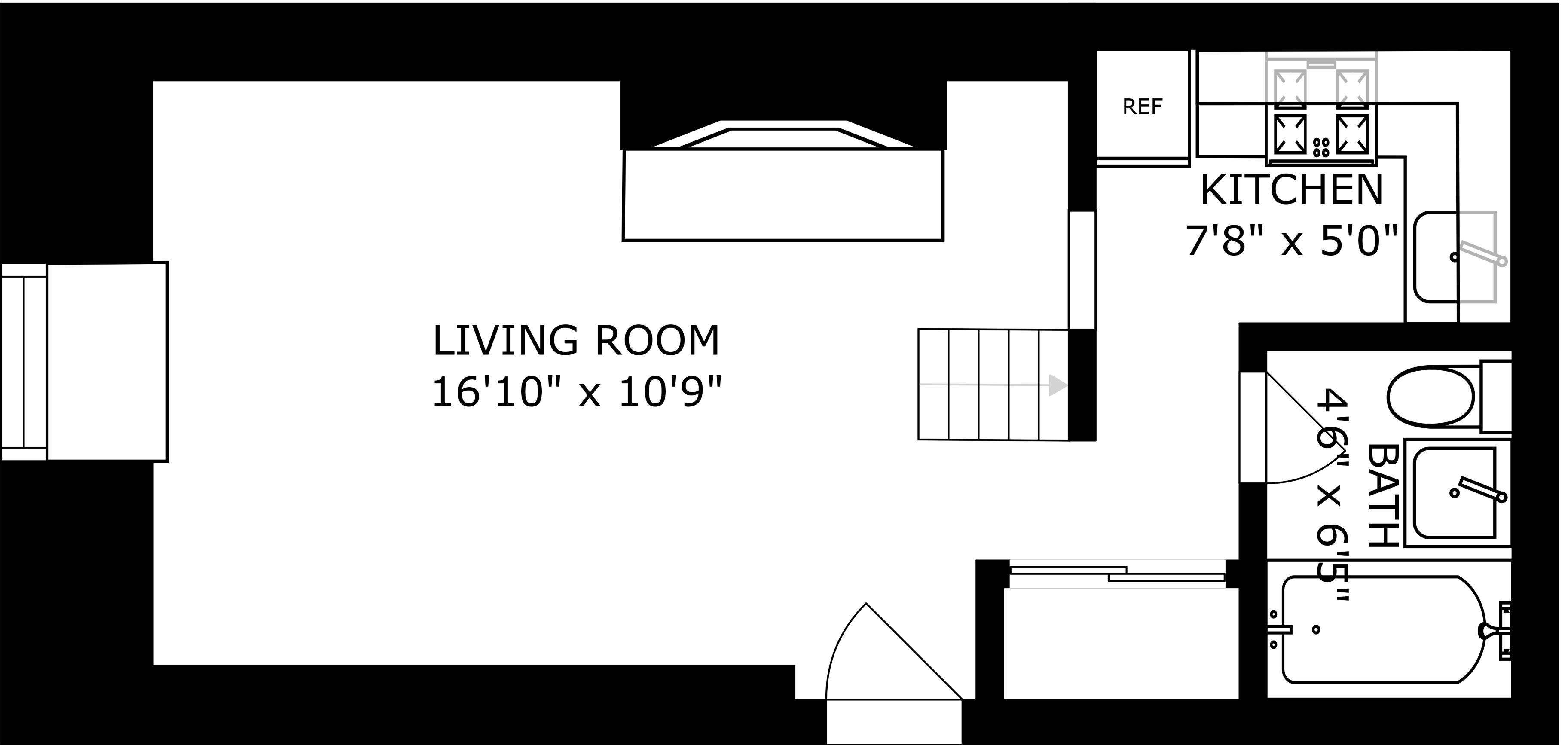


OPEN TO BELOW

BEDROOM
8'2" x 9'4"

SIZES AND DIMENSIONS ARE APPROXIMATE, ACTUAL MAY VARY.





LIVING ROOM
16'10" x 10'9"

KITCHEN
7'8" x 5'0"

BATH
4'6" x 6'5"

REF

SIZES AND DIMENSIONS ARE APPROXIMATE, ACTUAL MAY VARY.

