

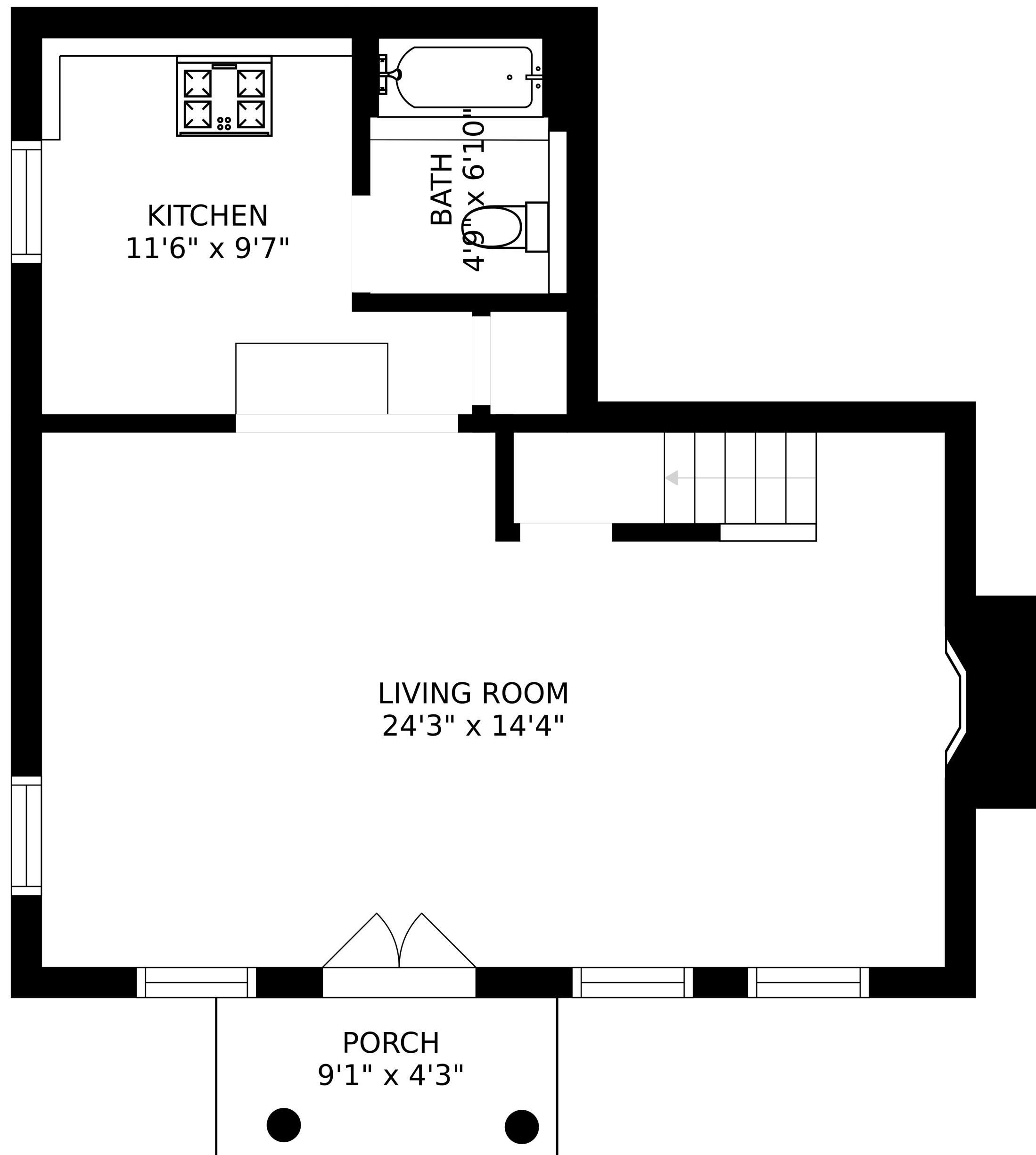
SIZES AND DIMENSIONS ARE APPROXIMATE, ACTUAL MAY VARY.



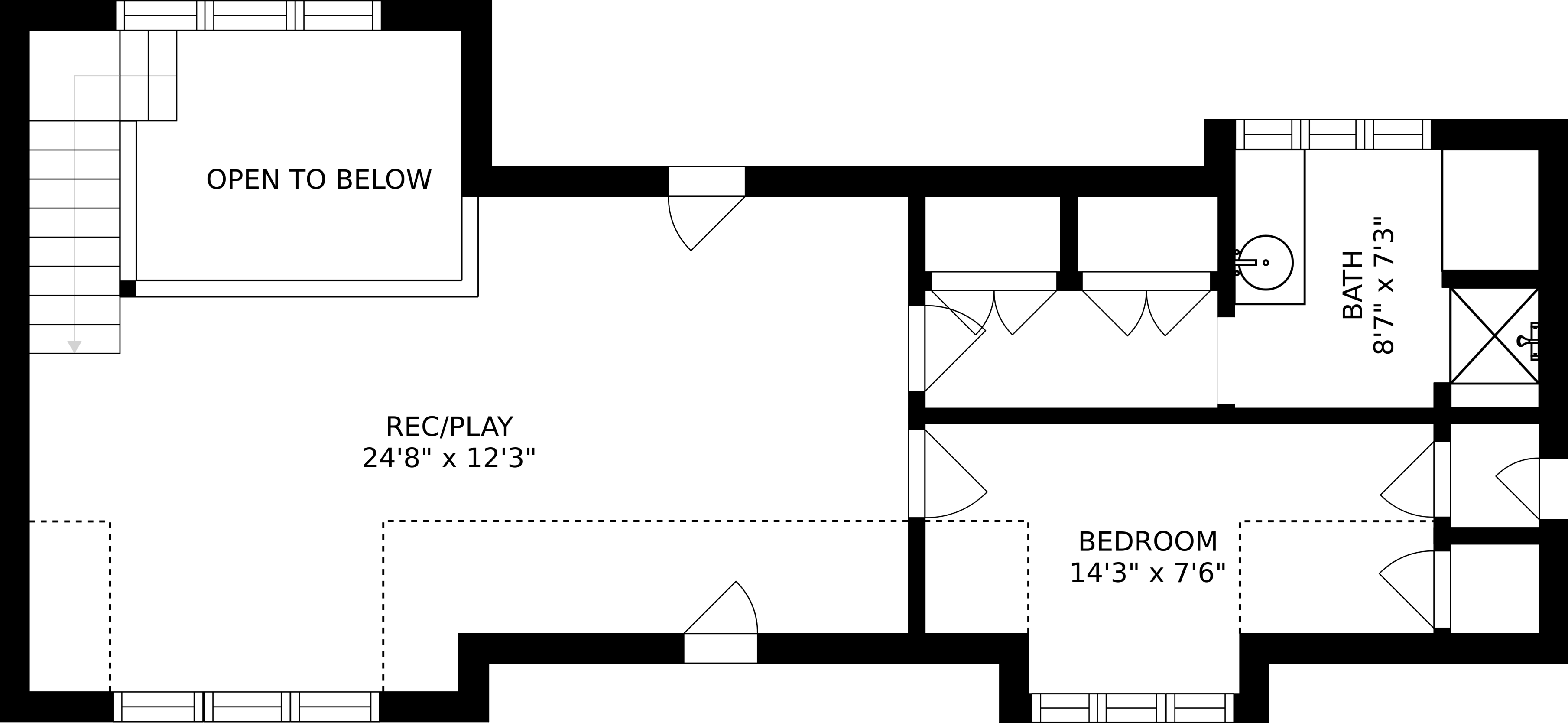
ATTIC  
15'7" x 14'4"

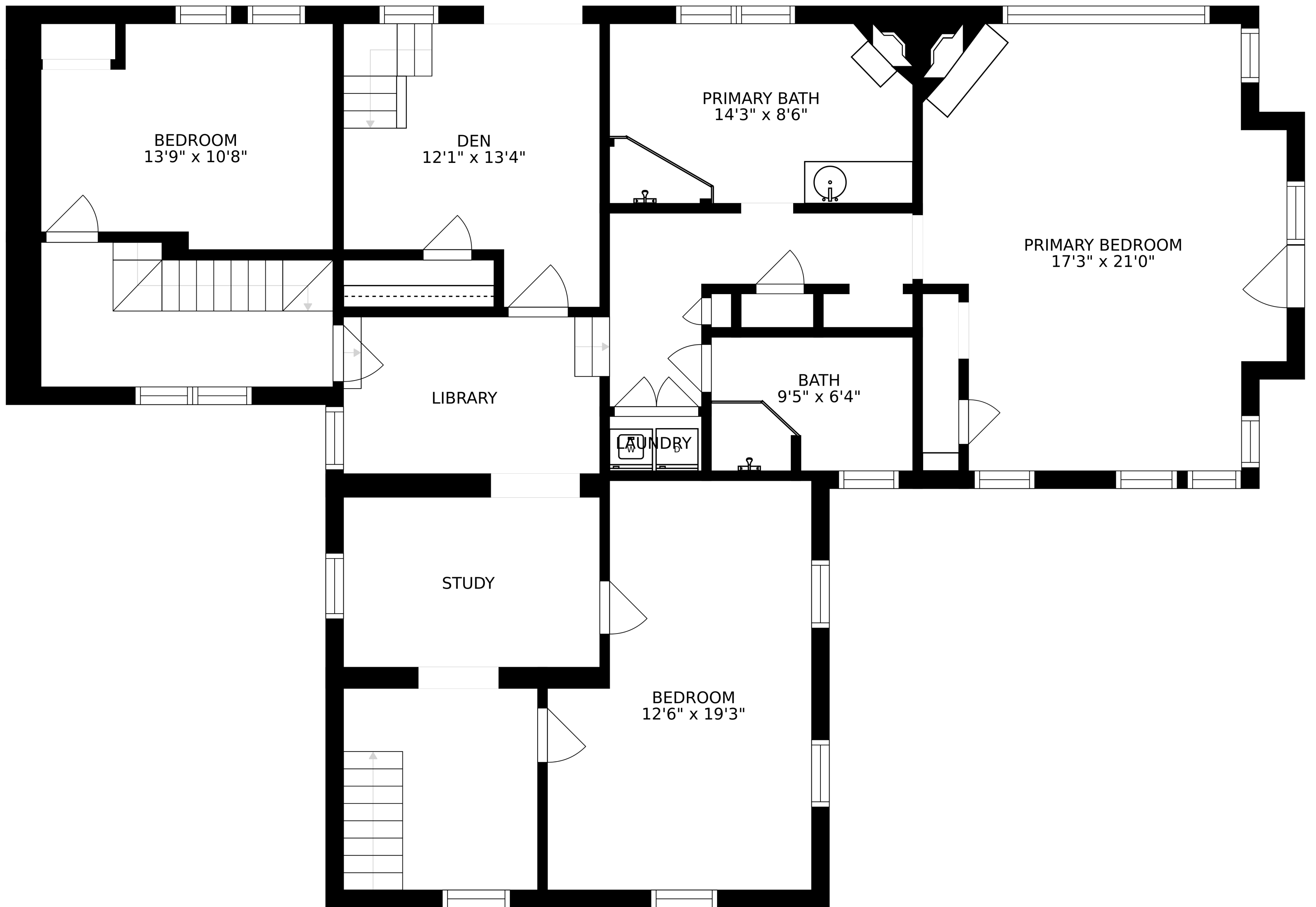
The floor plan shows a rectangular attic space. The top and bottom walls are thick black lines with several white rectangular openings, likely for windows or doors. The left wall is a thick black line with a white rectangular opening. The right wall is a thick black line with a white rectangular opening. A staircase is located in the upper right quadrant, consisting of a series of white rectangular steps. A vertical line runs from the top of the staircase down to the bottom wall. A horizontal line runs from the top of the staircase to the right wall. A dashed line runs along the bottom wall, starting from the left wall and ending at the right wall. The text 'ATTIC' and '15'7" x 14'4"' is centered in the left half of the space. The text 'OPEN TO BELOW' is centered in the right half of the space.

OPEN TO BELOW

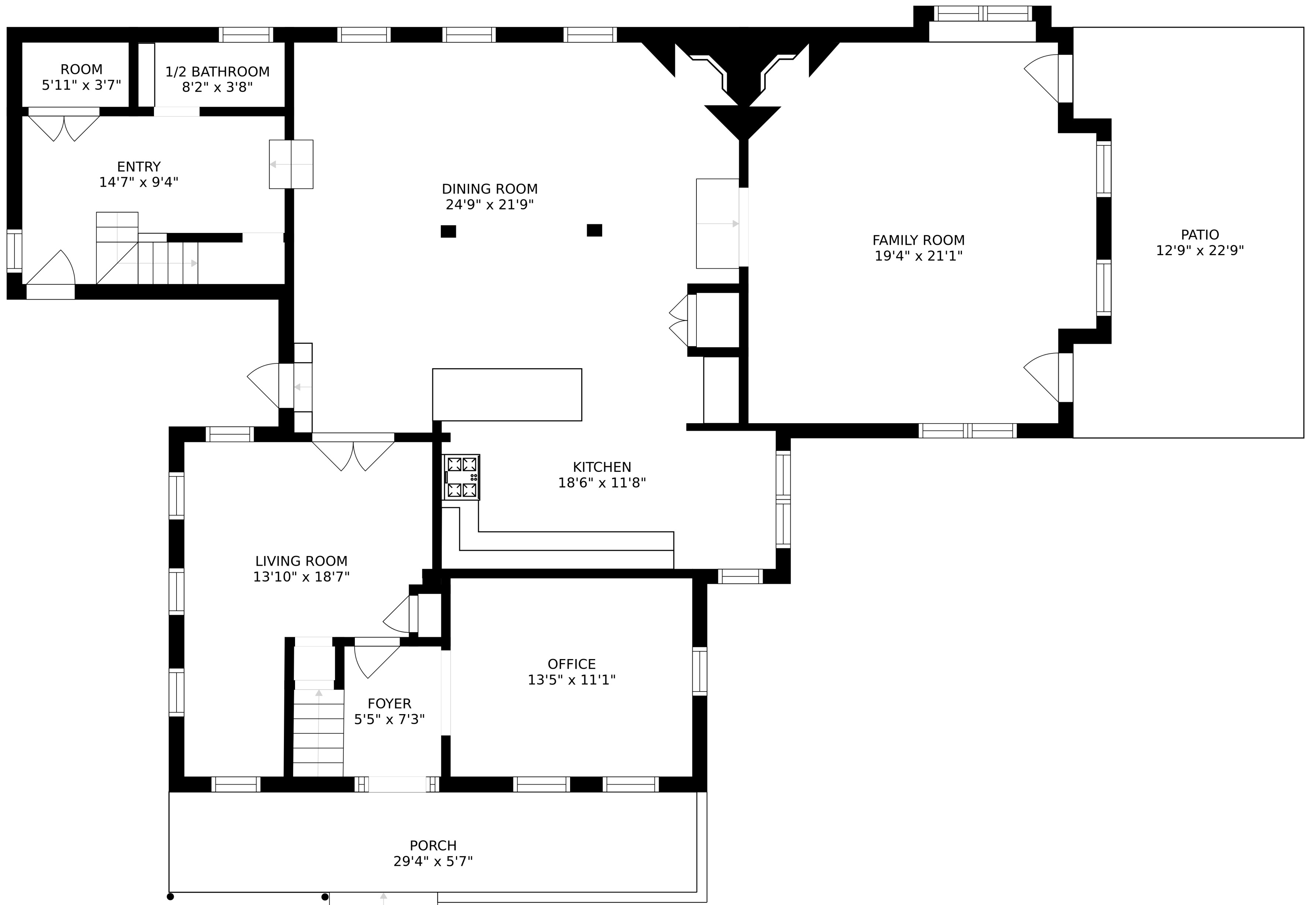


SIZES AND DIMENSIONS ARE APPROXIMATE, ACTUAL MAY VARY.





SIZES AND DIMENSIONS ARE APPROXIMATE, ACTUAL MAY VARY.



SIZES AND DIMENSIONS ARE APPROXIMATE, ACTUAL MAY VARY.