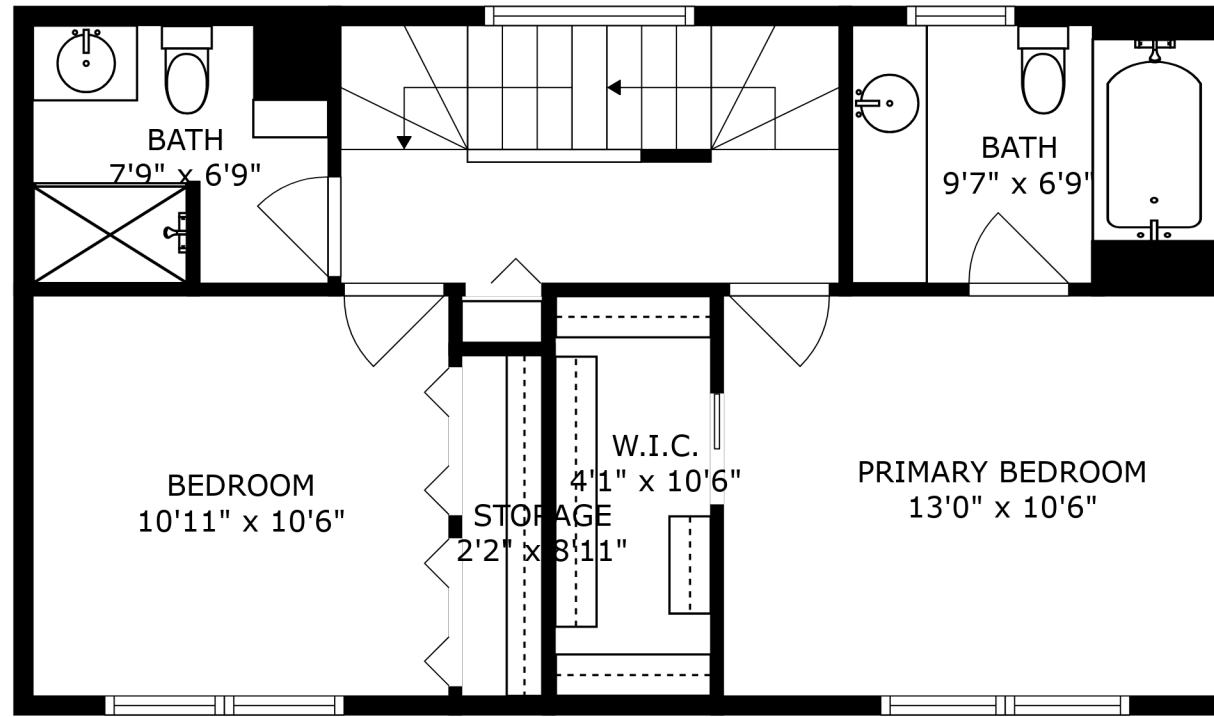
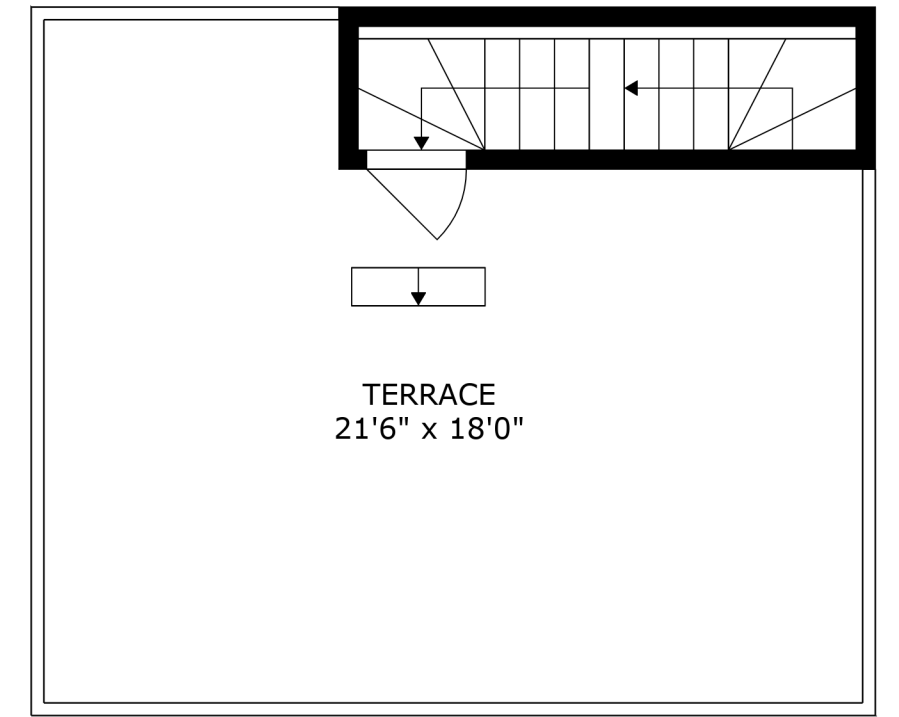


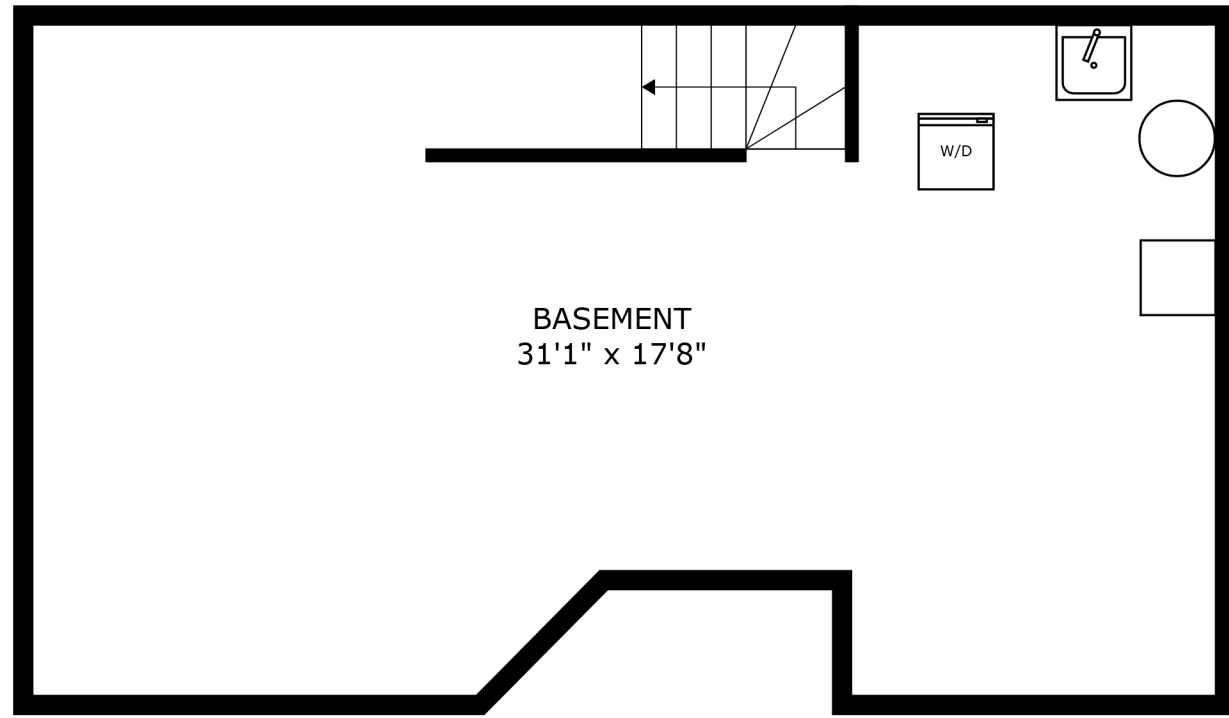
FLOOR 3



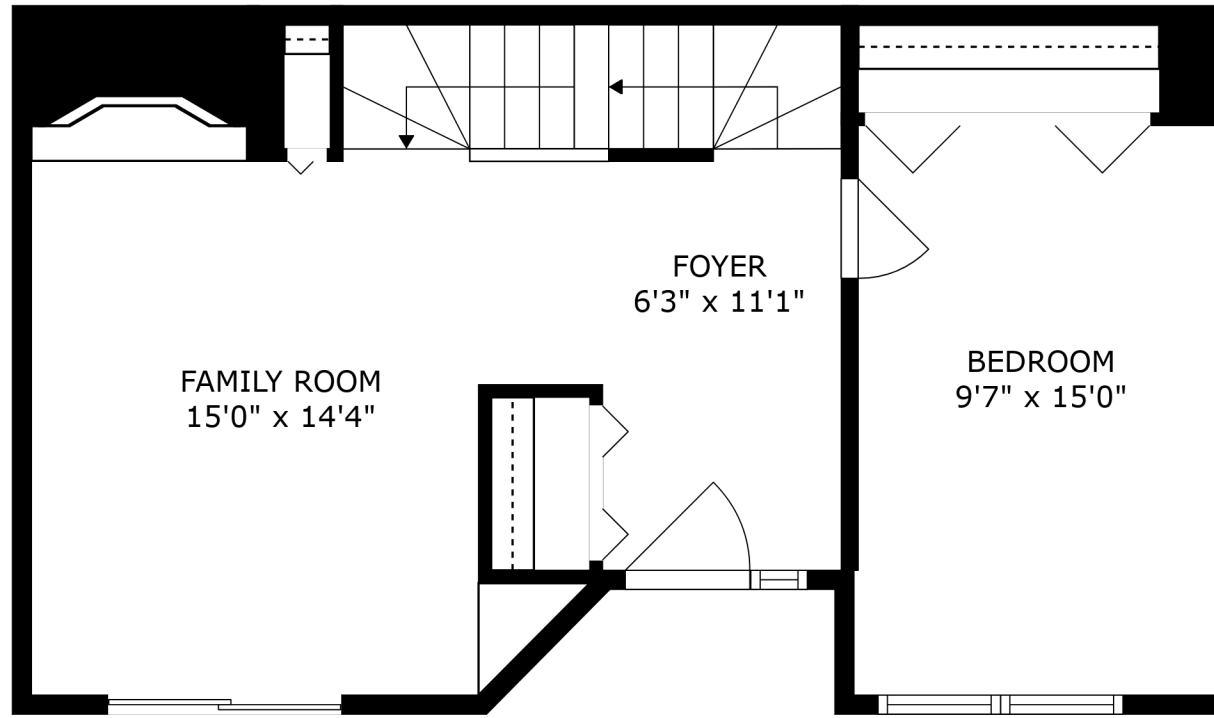
FLOOR 4



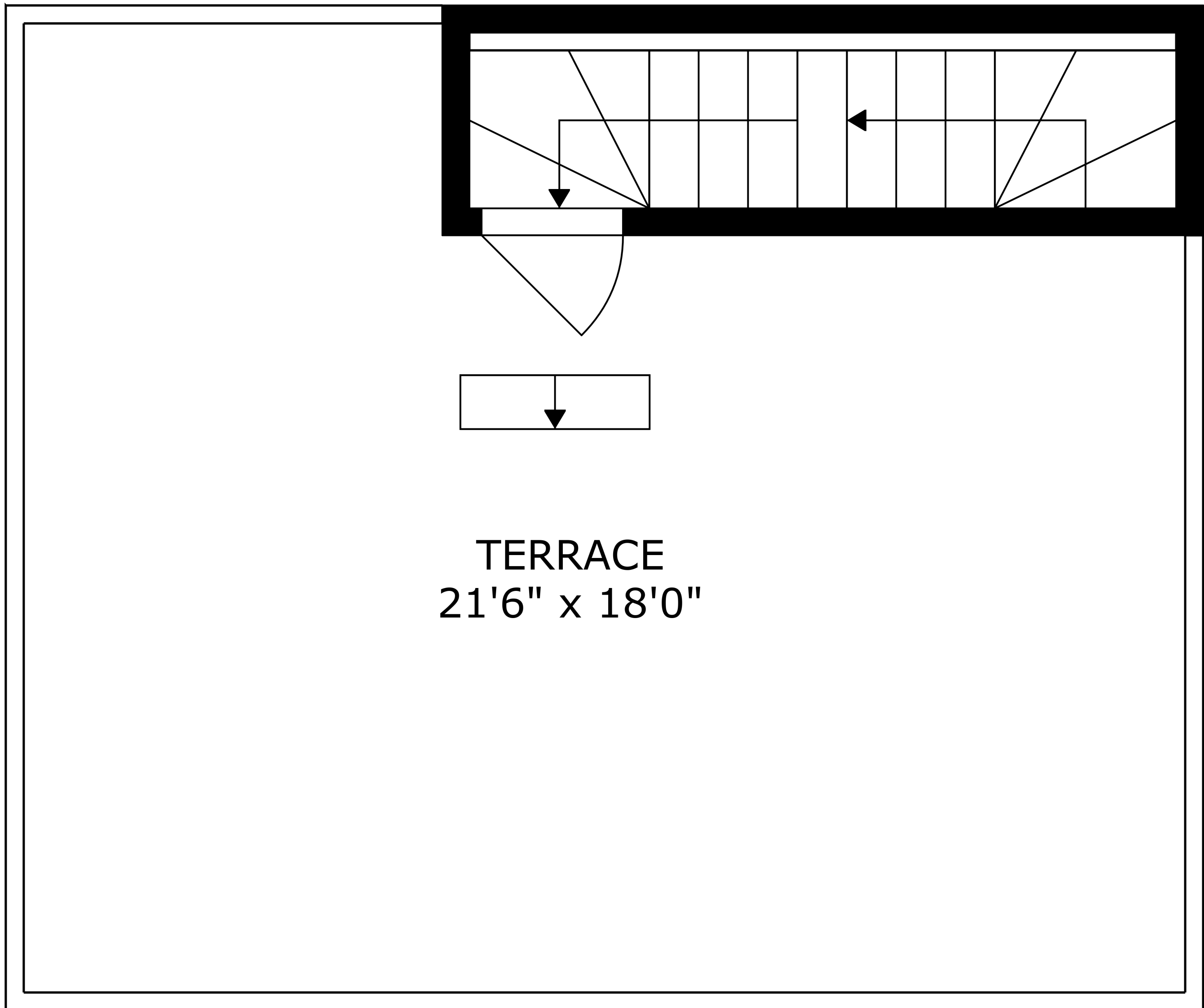
FLOOR 5



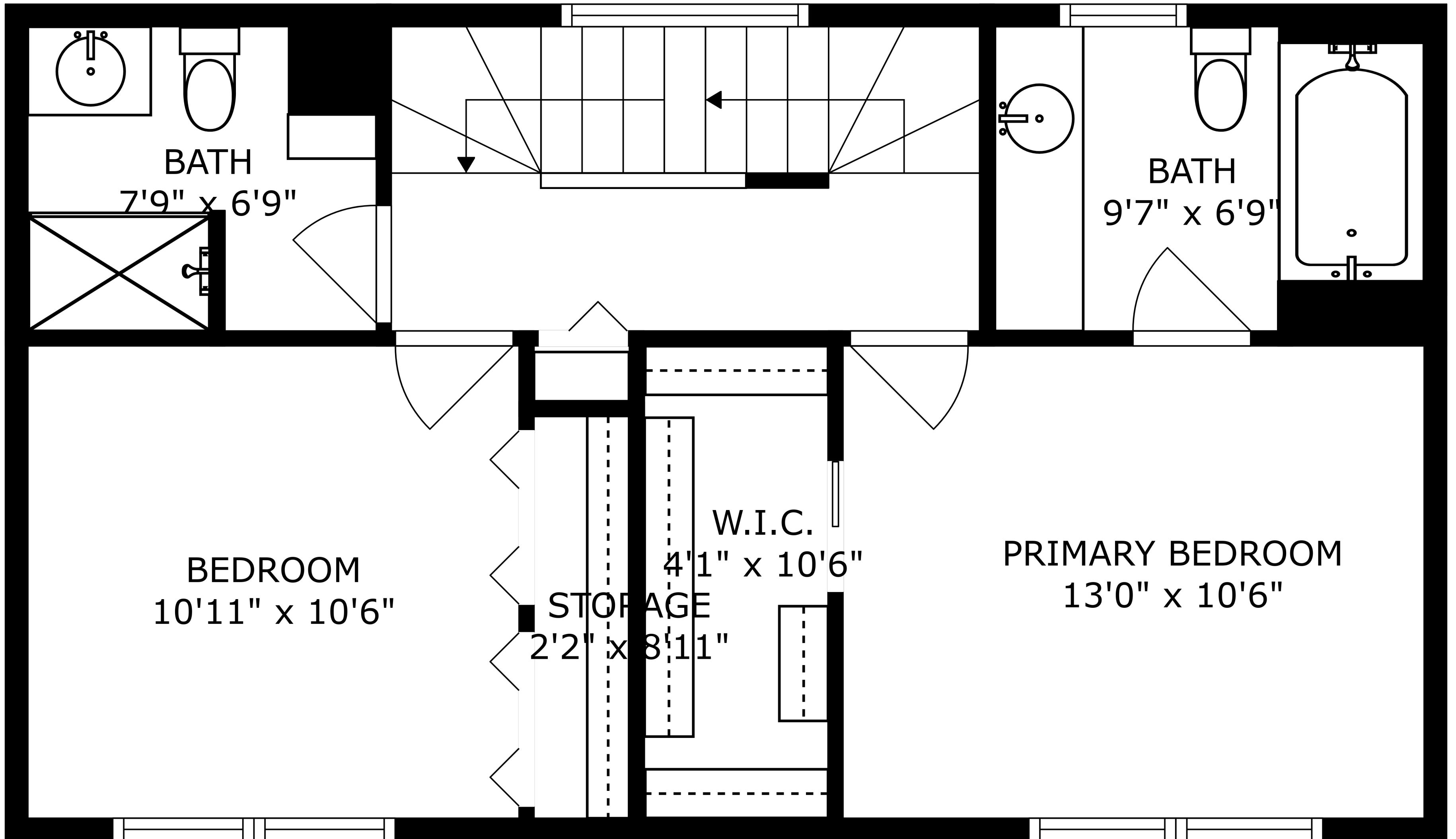
FLOOR 1



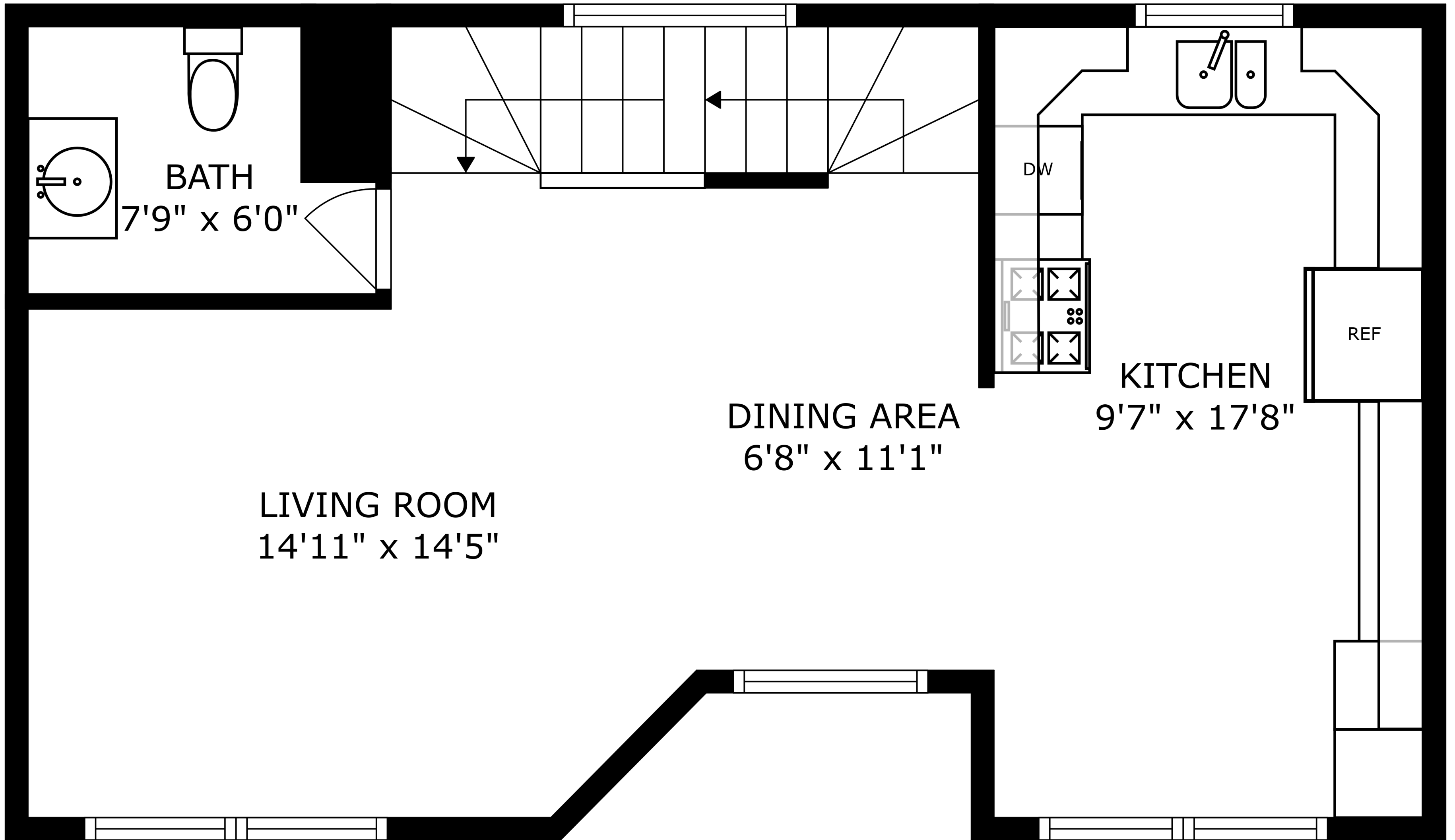
FLOOR 2



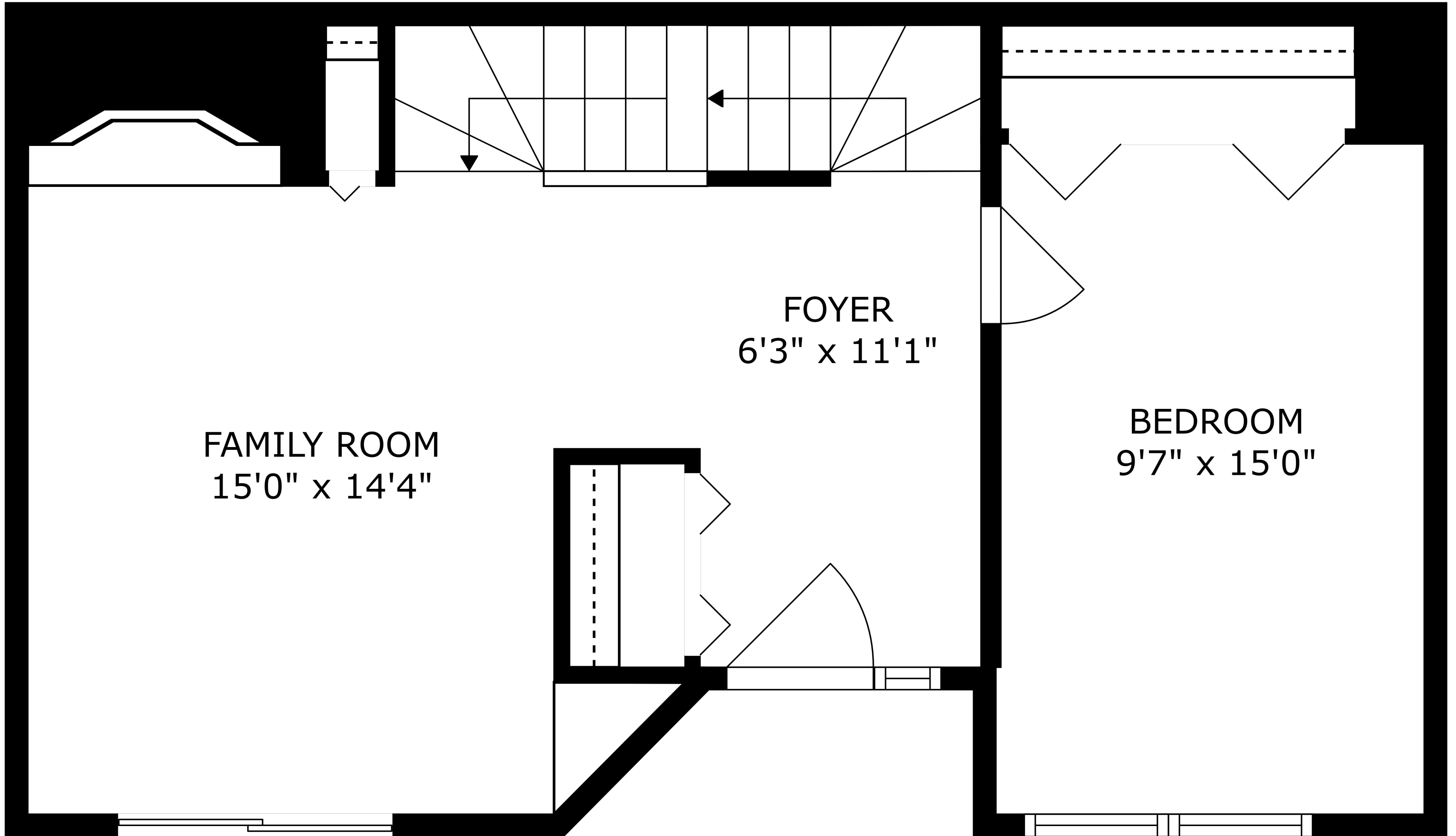
TERRACE
21'6" x 18'0"



SIZES AND DIMENSIONS ARE APPROXIMATE, ACTUAL MAY VARY.



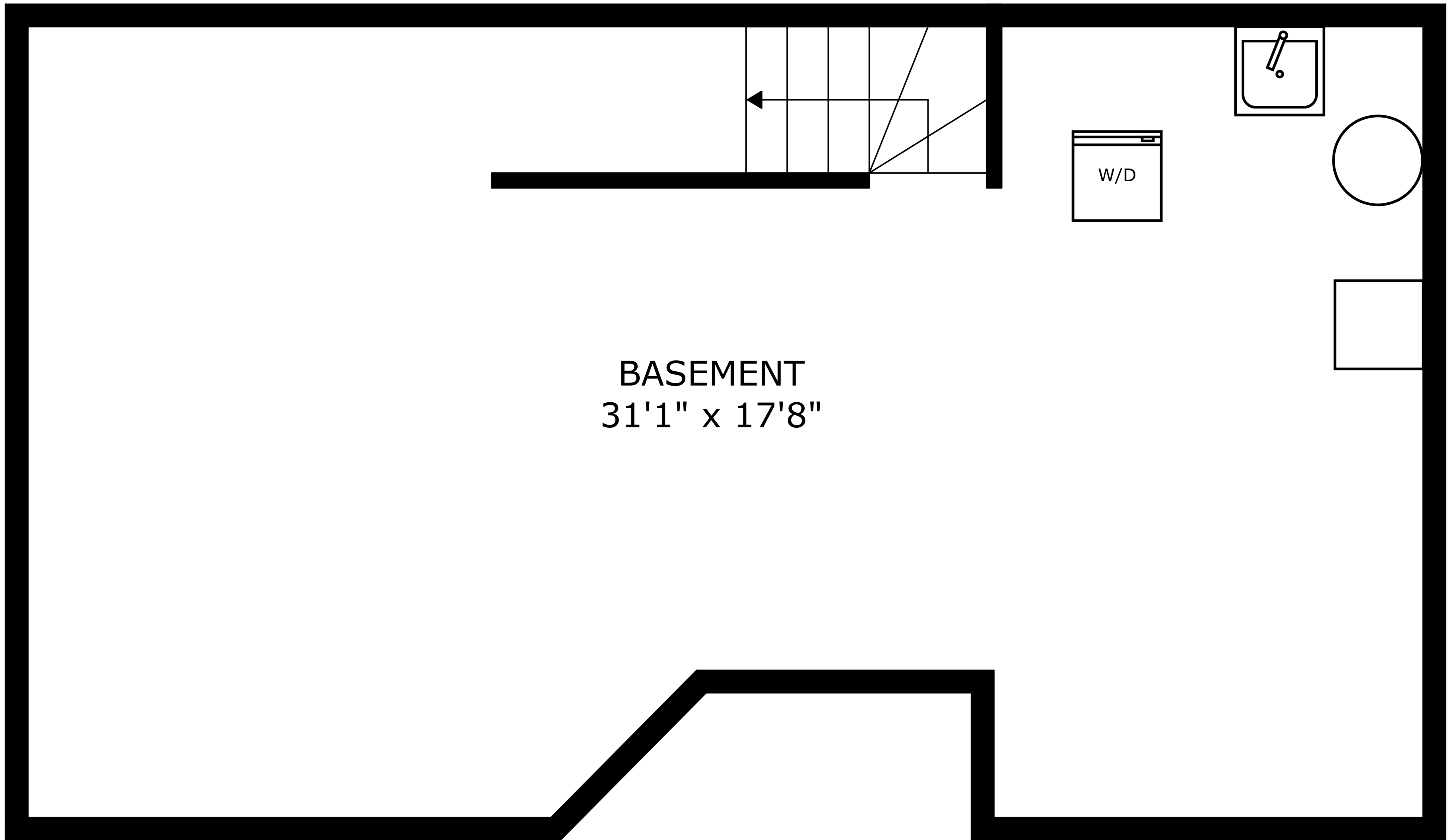
SIZES AND DIMENSIONS ARE APPROXIMATE, ACTUAL MAY VARY.



FAMILY ROOM
15'0" x 14'4"

FOYER
6'3" x 11'1"

BEDROOM
9'7" x 15'0"



BASEMENT
31'1" x 17'8"