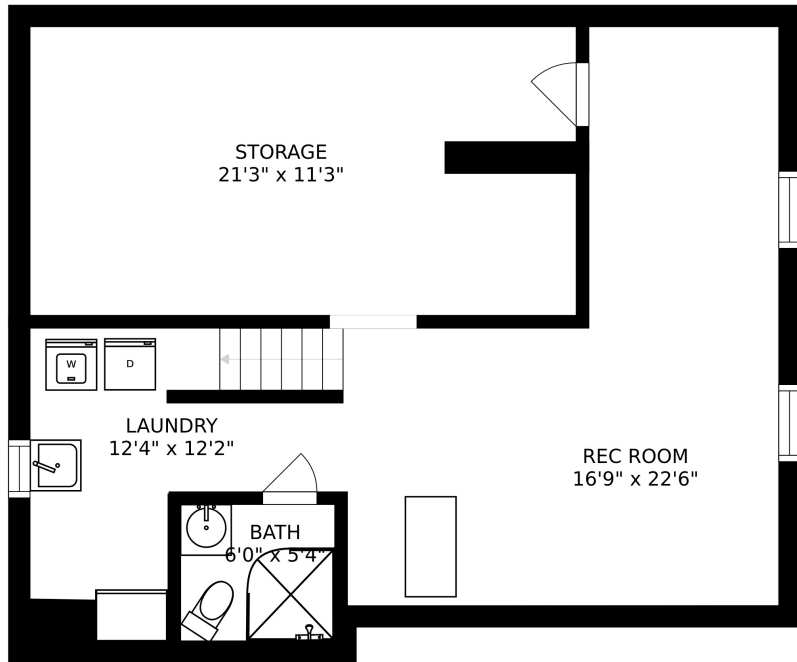


BEDROOM
16'2" x 10'5"

FLOOR 3



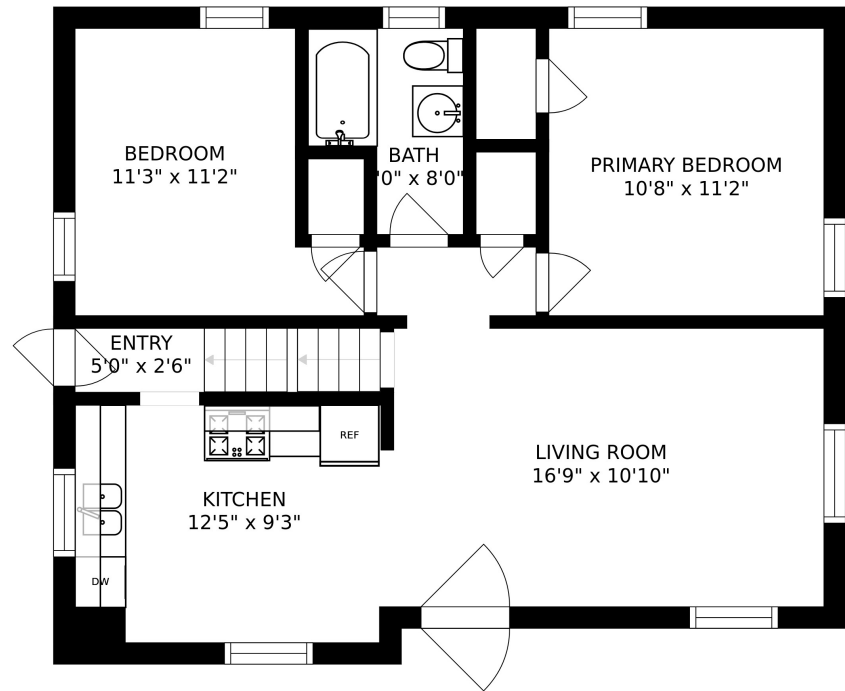
STORAGE
21'3" x 11'3"

LAUNDRY
12'4" x 12'2"

BATH
6'0" x 5'4"

REC ROOM
16'9" x 22'6"

FLOOR 1



BEDROOM
11'3" x 11'2"

BATH
10'0" x 8'0"

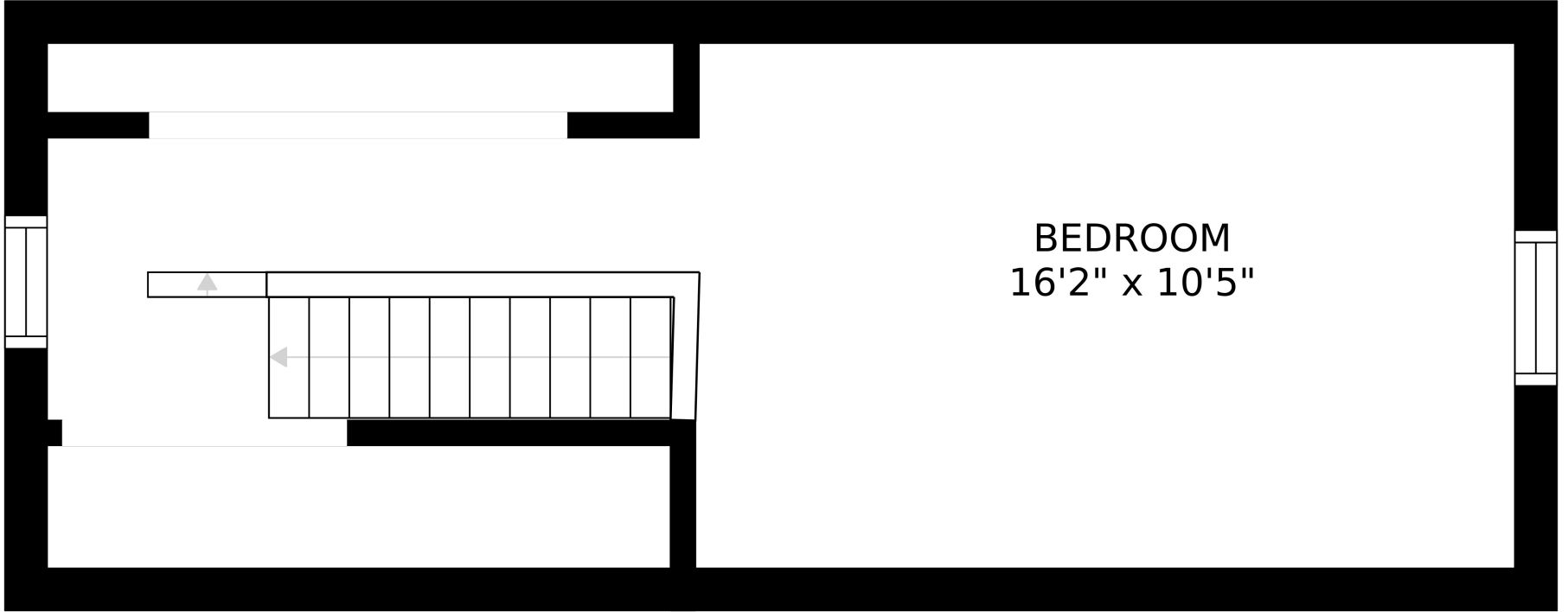
PRIMARY BEDROOM
10'8" x 11'2"

ENTRY
5'0" x 2'6"

KITCHEN
12'5" x 9'3"

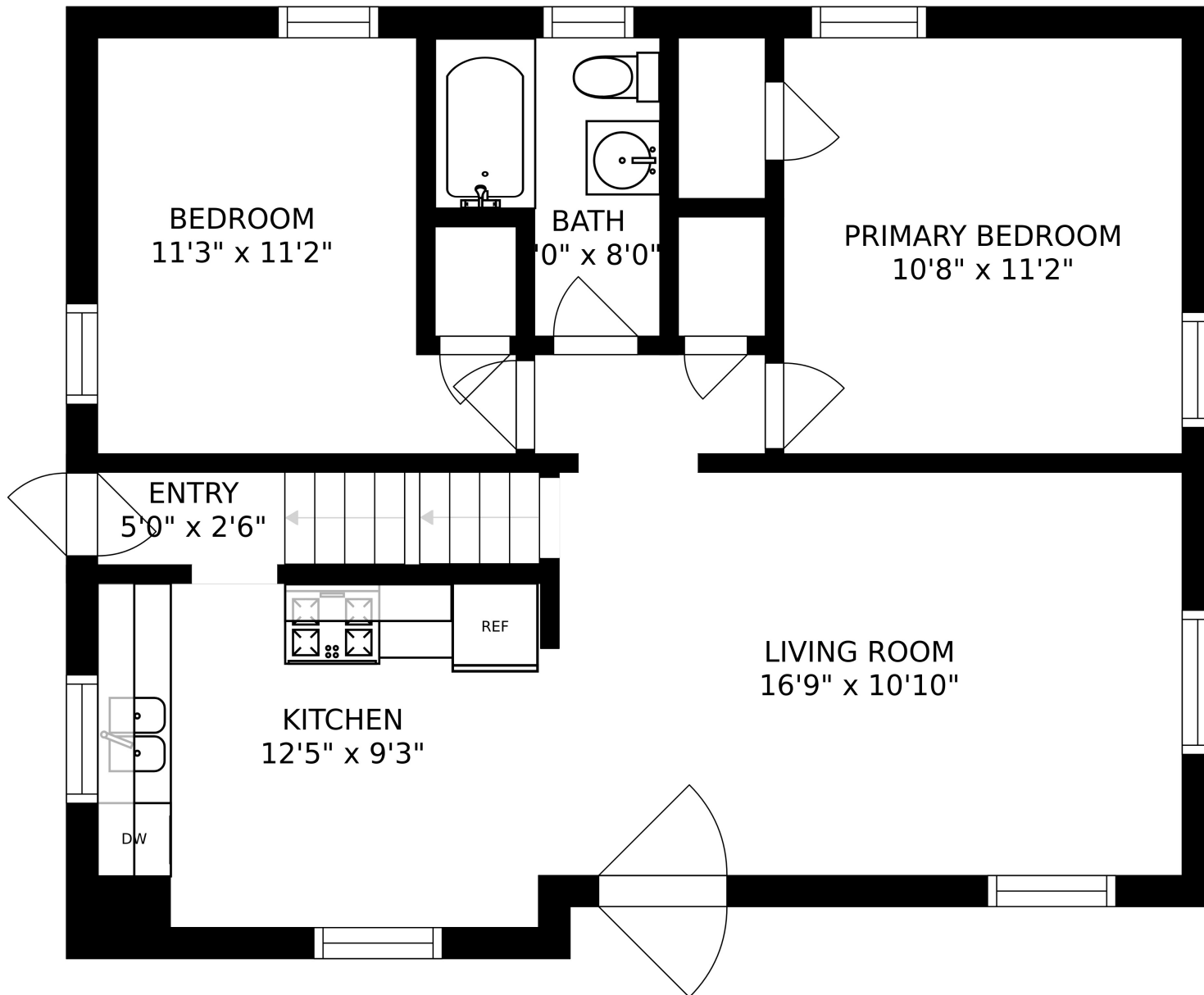
LIVING ROOM
16'9" x 10'10"

FLOOR 2



BEDROOM
16'2" x 10'5"

SIZES AND DIMENSIONS ARE APPROXIMATE, ACTUAL MAY VARY.



SIZES AND DIMENSIONS ARE APPROXIMATE, ACTUAL MAY VARY.

