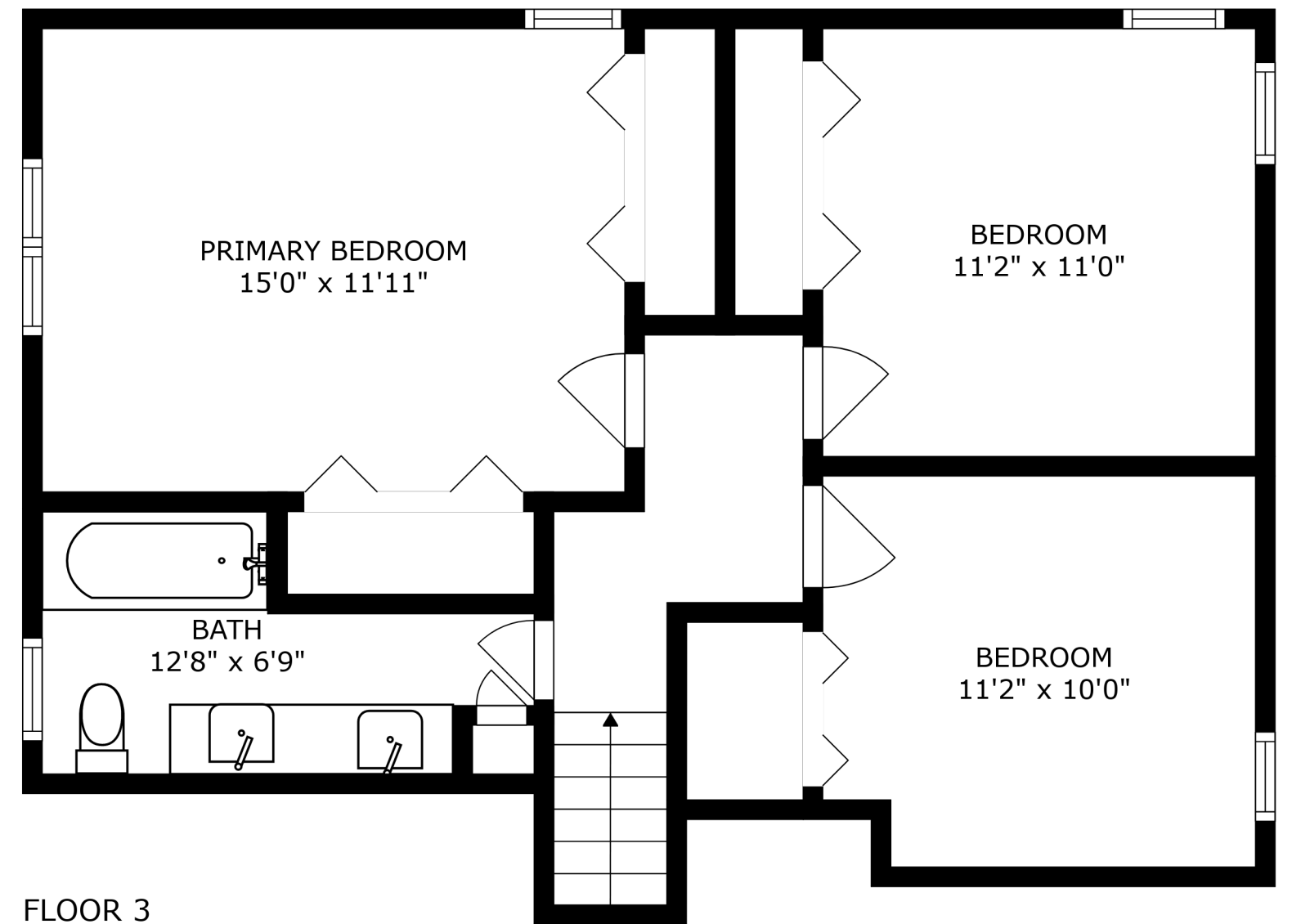
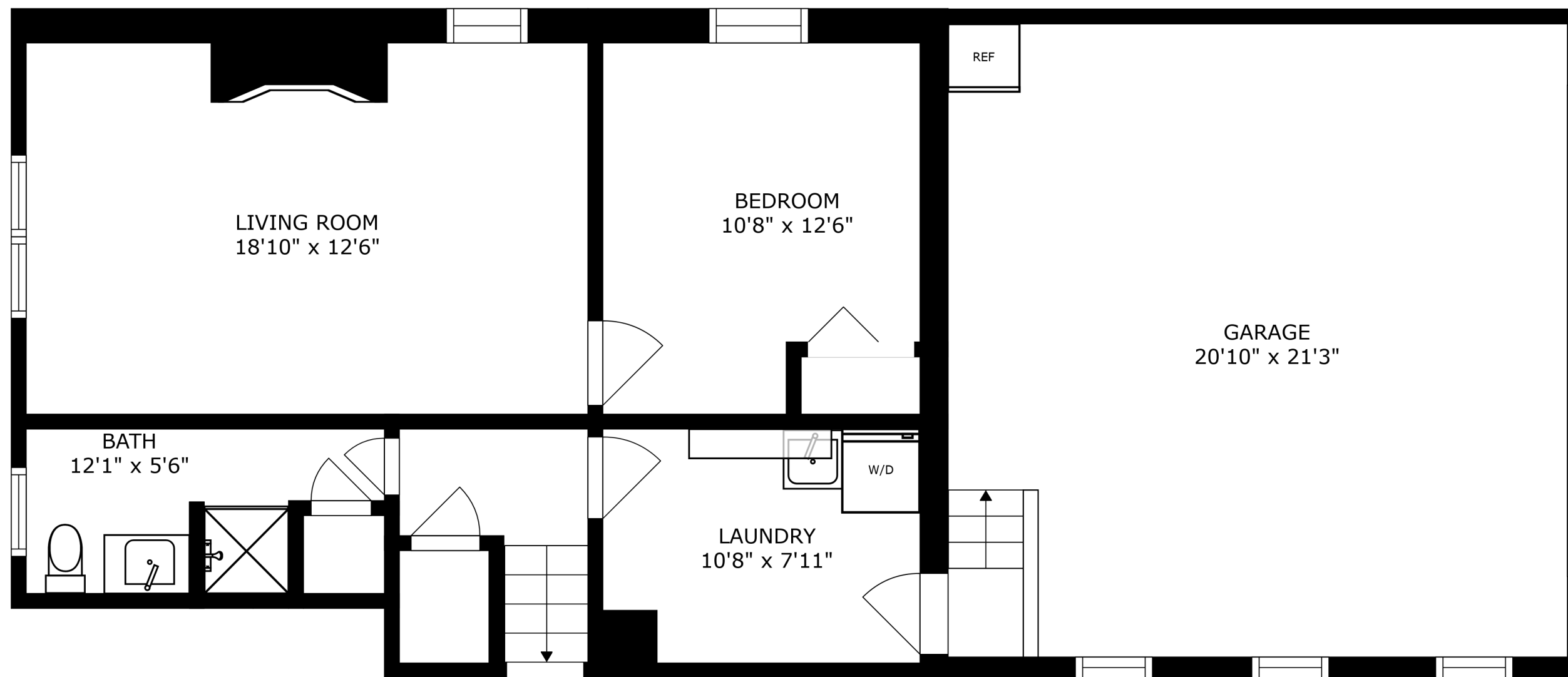


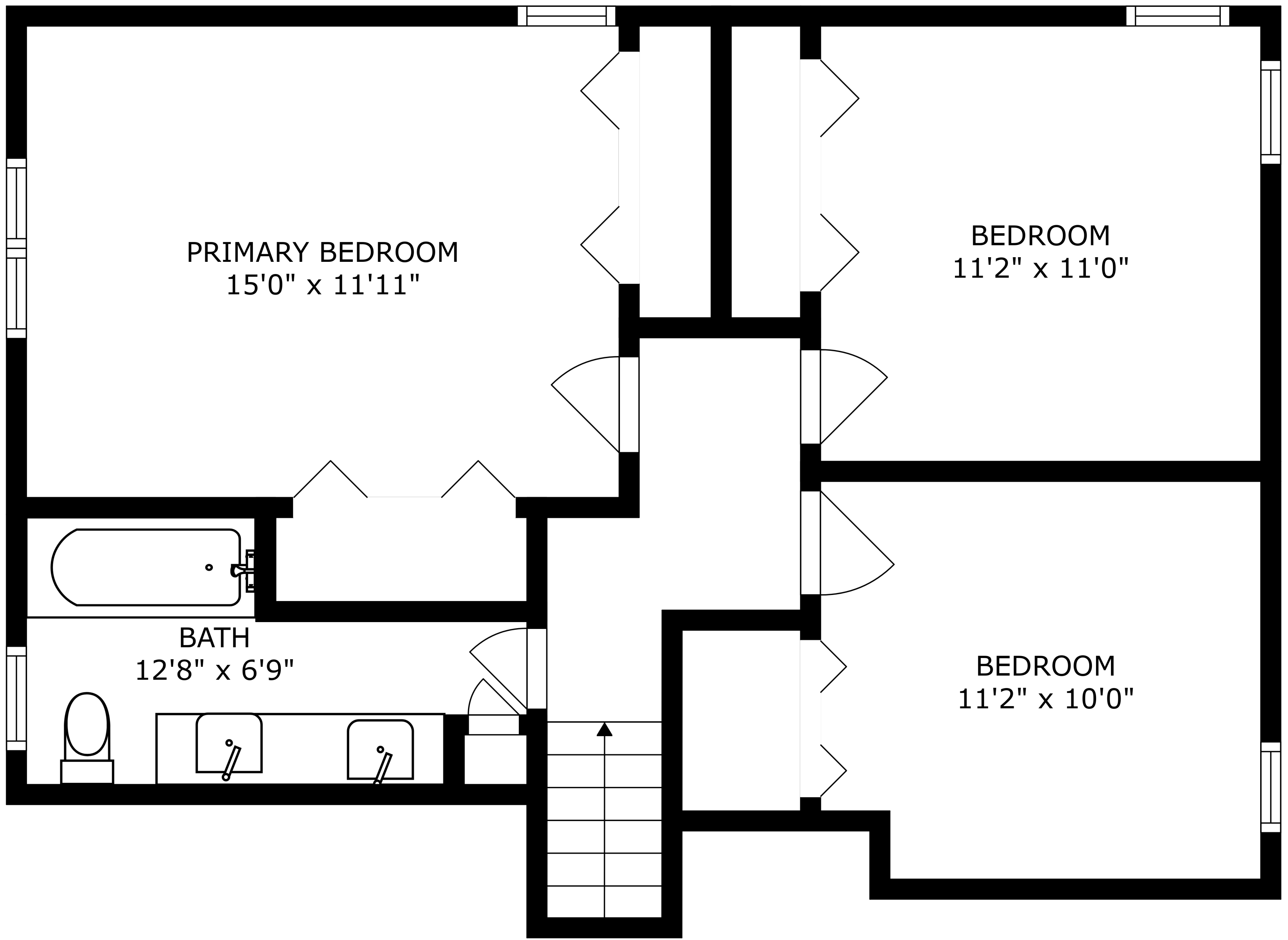
FLOOR 2



FLOOR 3



FLOOR 1

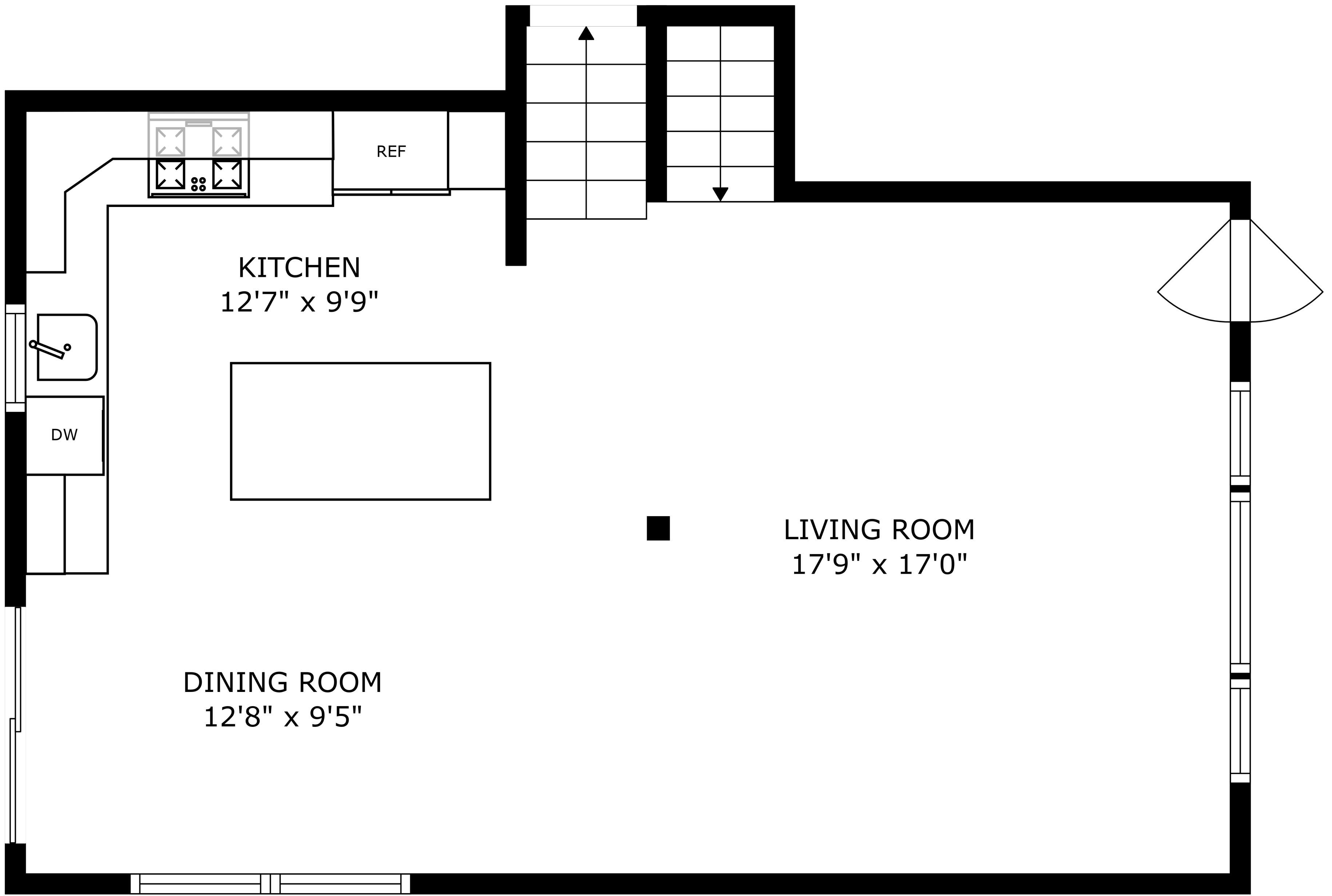


PRIMARY BEDROOM
15'0" x 11'11"

BEDROOM
11'2" x 11'0"

BATH
12'8" x 6'9"

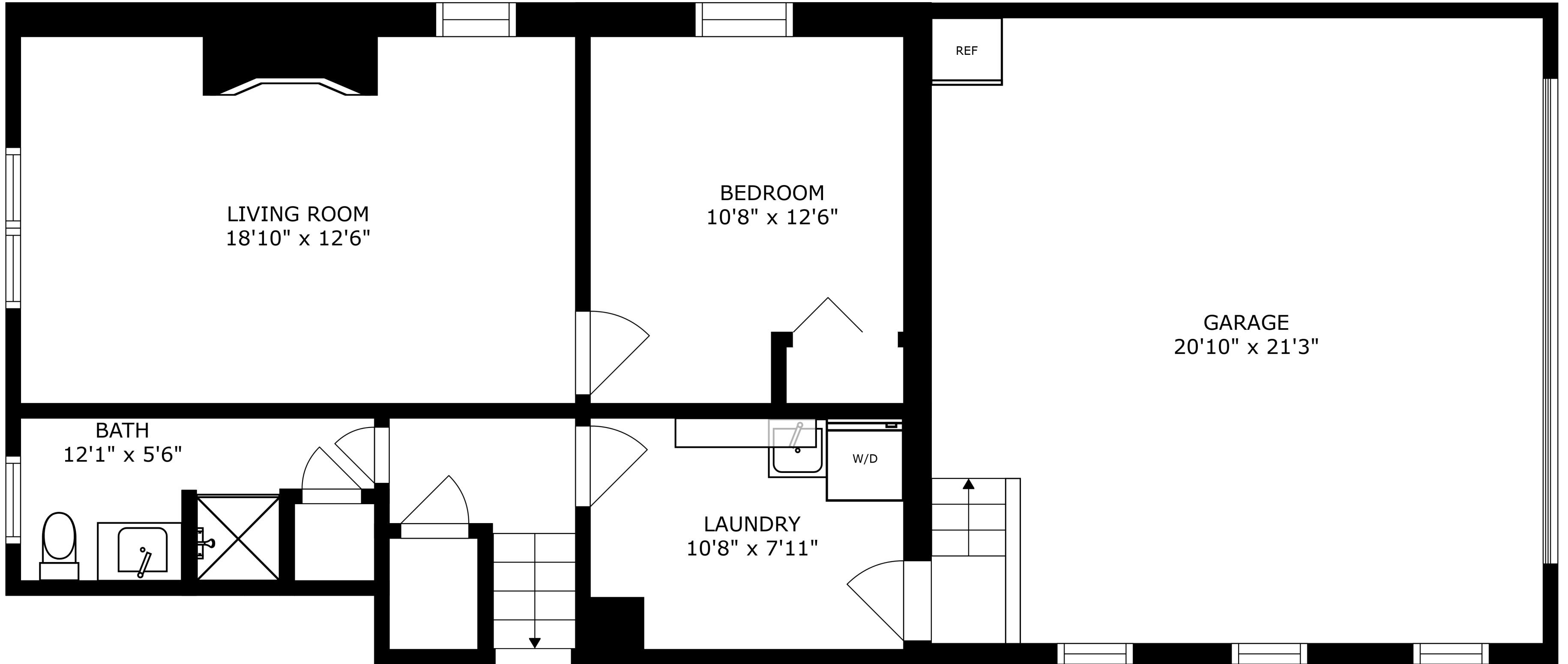
BEDROOM
11'2" x 10'0"



KITCHEN
12'7" x 9'9"

LIVING ROOM
17'9" x 17'0"

DINING ROOM
12'8" x 9'5"



SIZES AND DIMENSIONS ARE APPROXIMATE, ACTUAL MAY VARY.