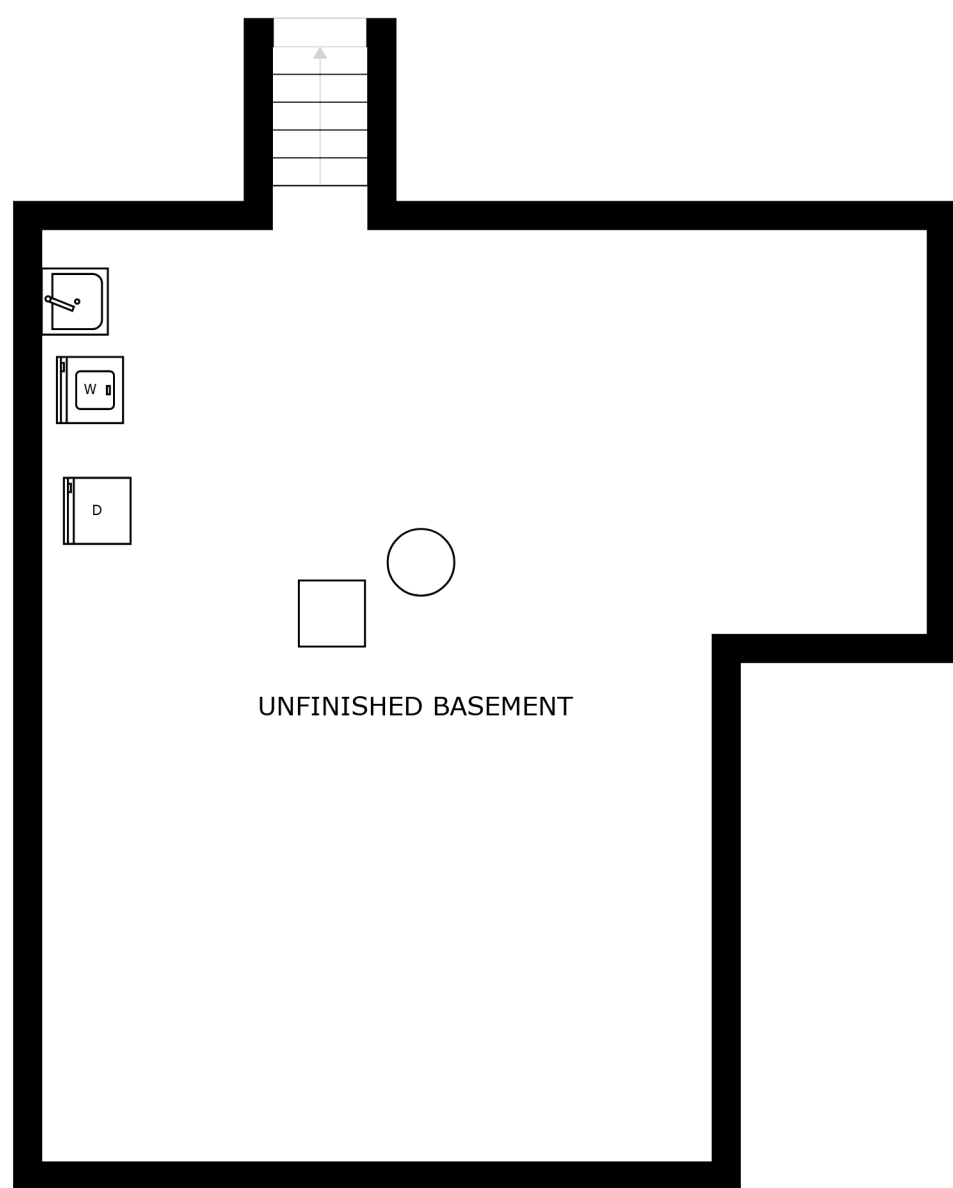
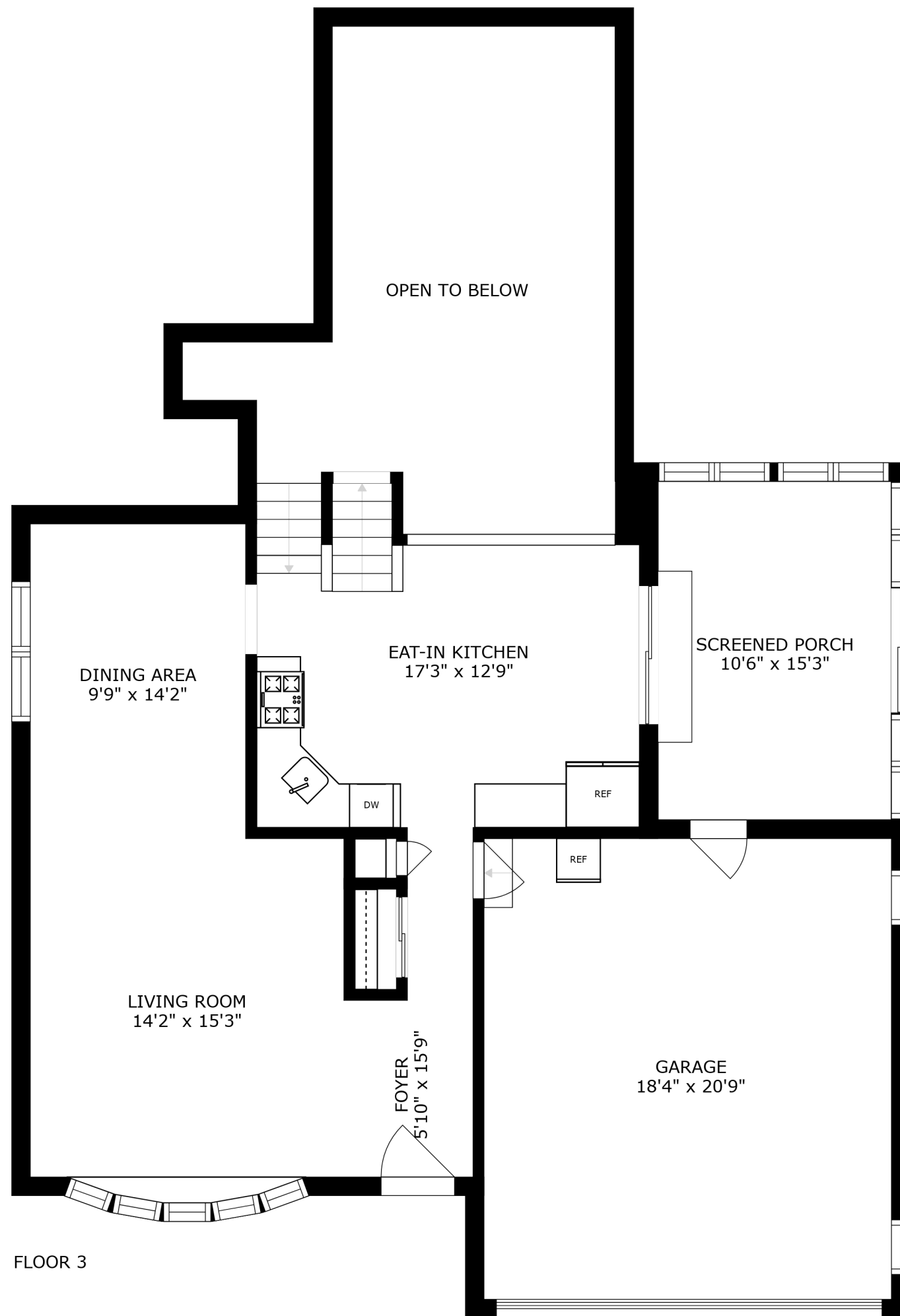




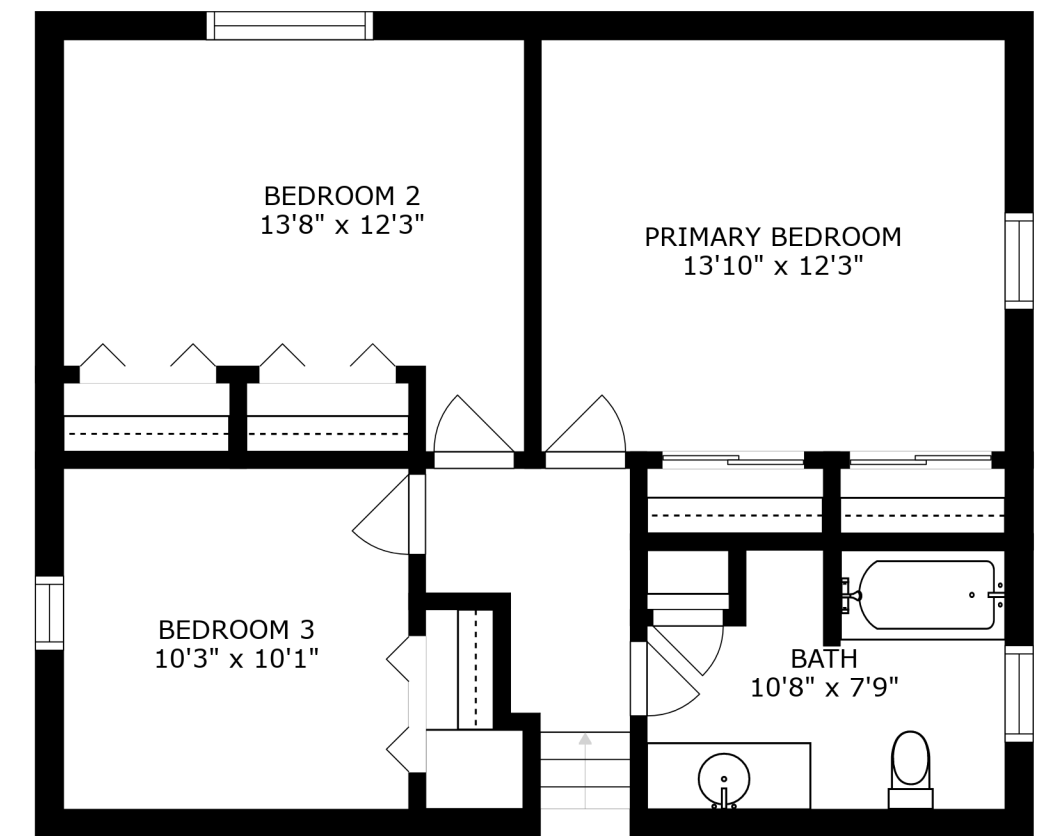
FLOOR 2



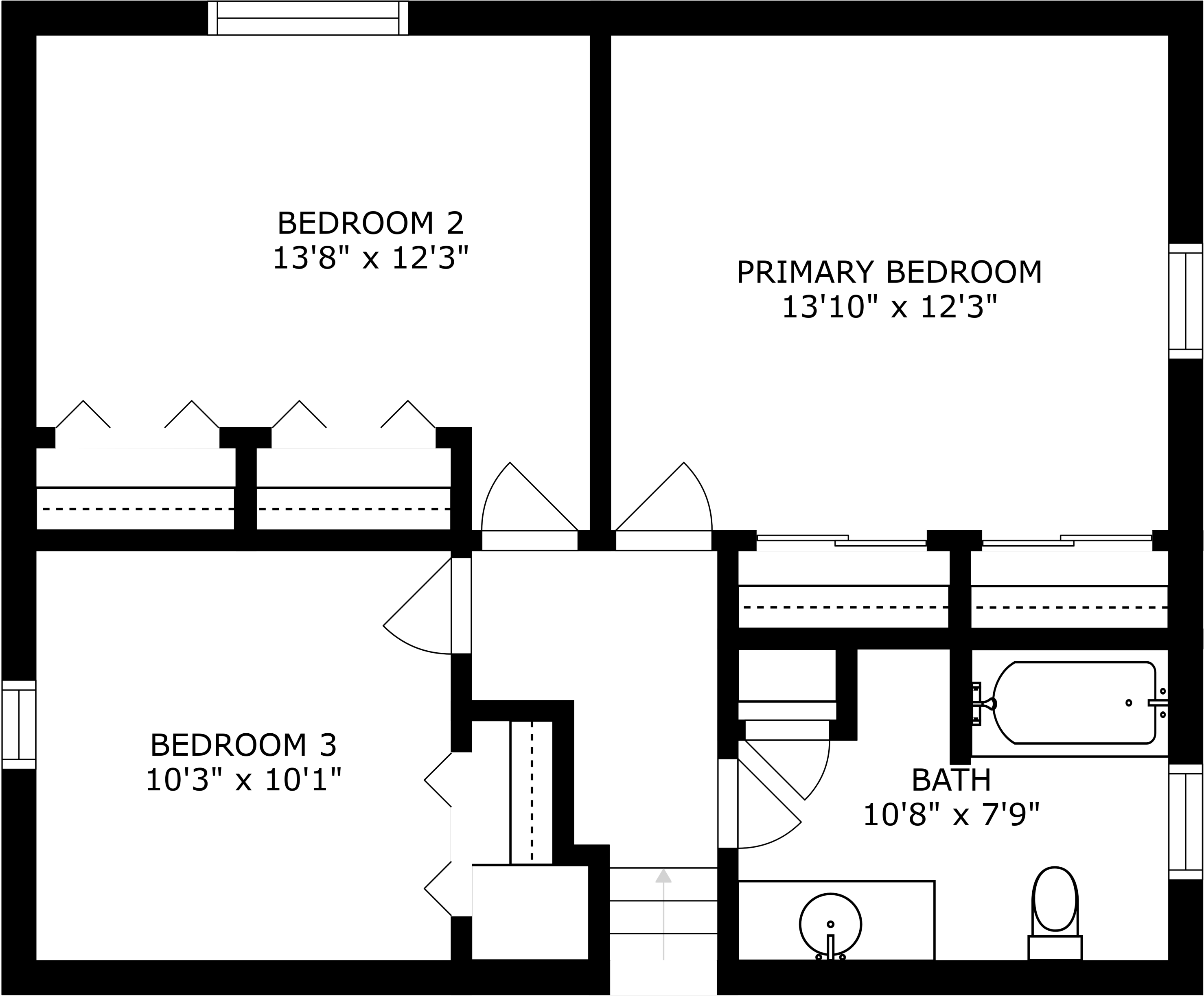
FLOOR 1



FLOOR 3



FLOOR 4



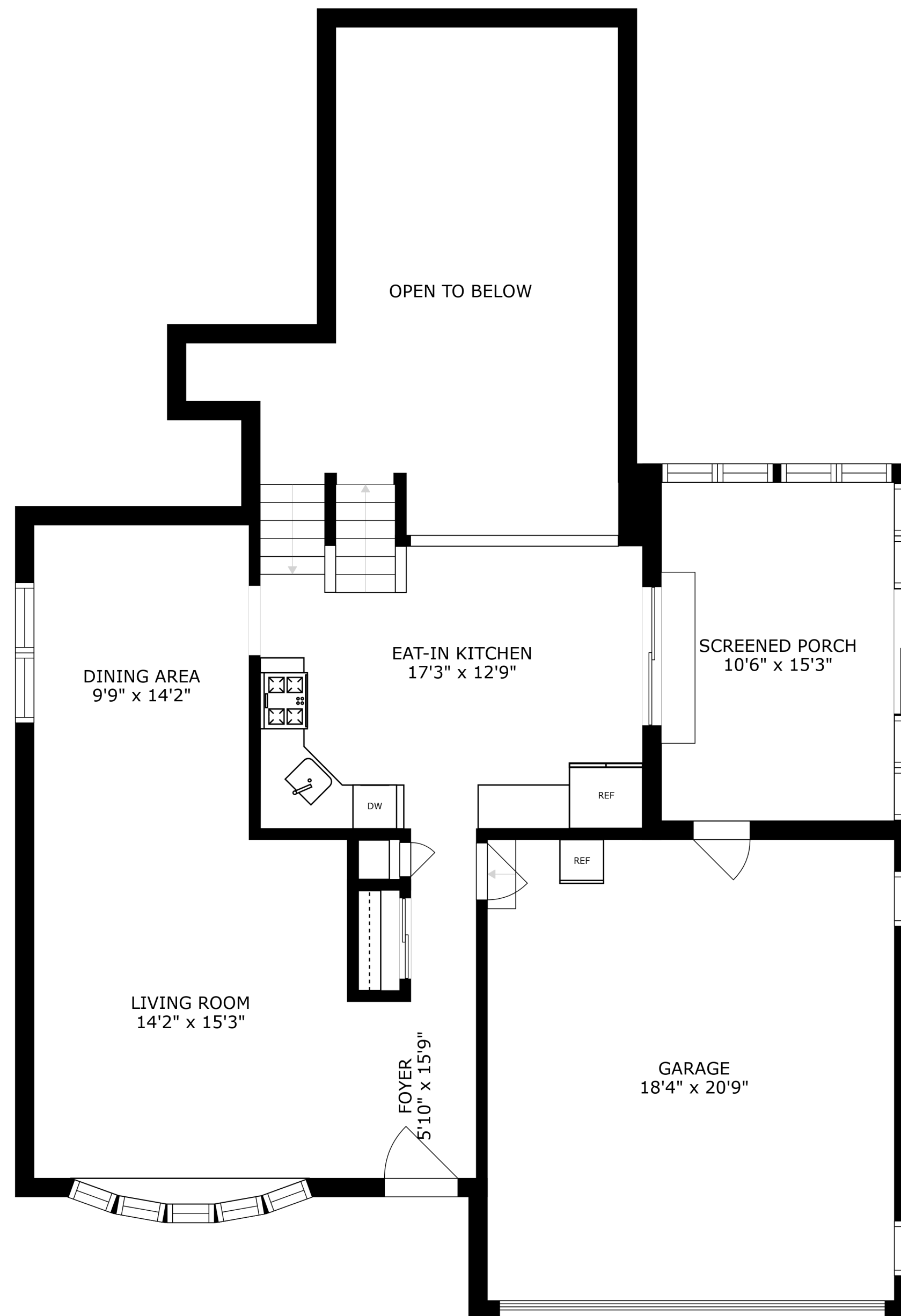
BEDROOM 2
13'8" x 12'3"

PRIMARY BEDROOM
13'10" x 12'3"

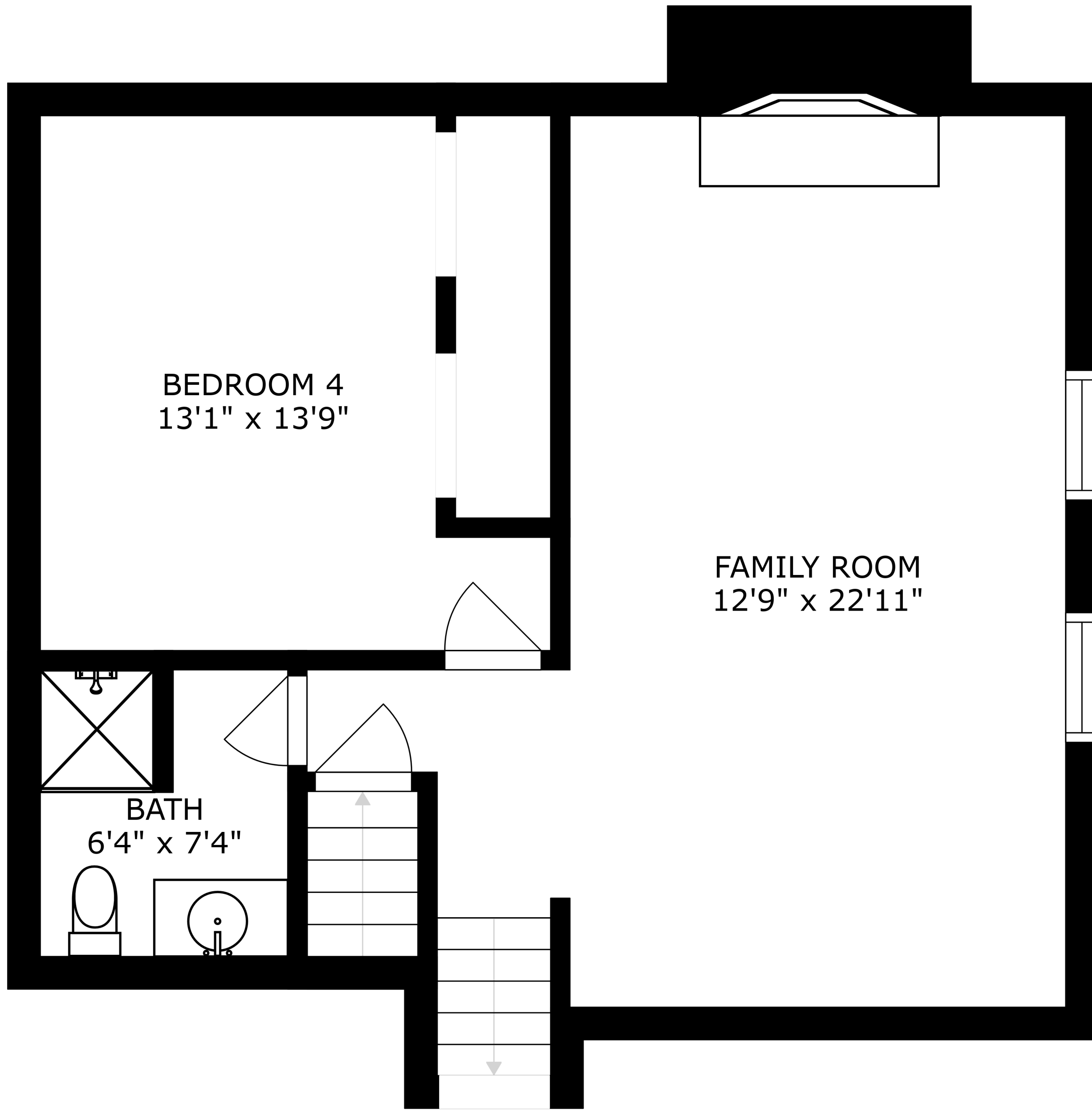
BEDROOM 3
10'3" x 10'1"

BATH
10'8" x 7'9"

SIZES AND DIMENSIONS ARE APPROXIMATE, ACTUAL MAY VARY.



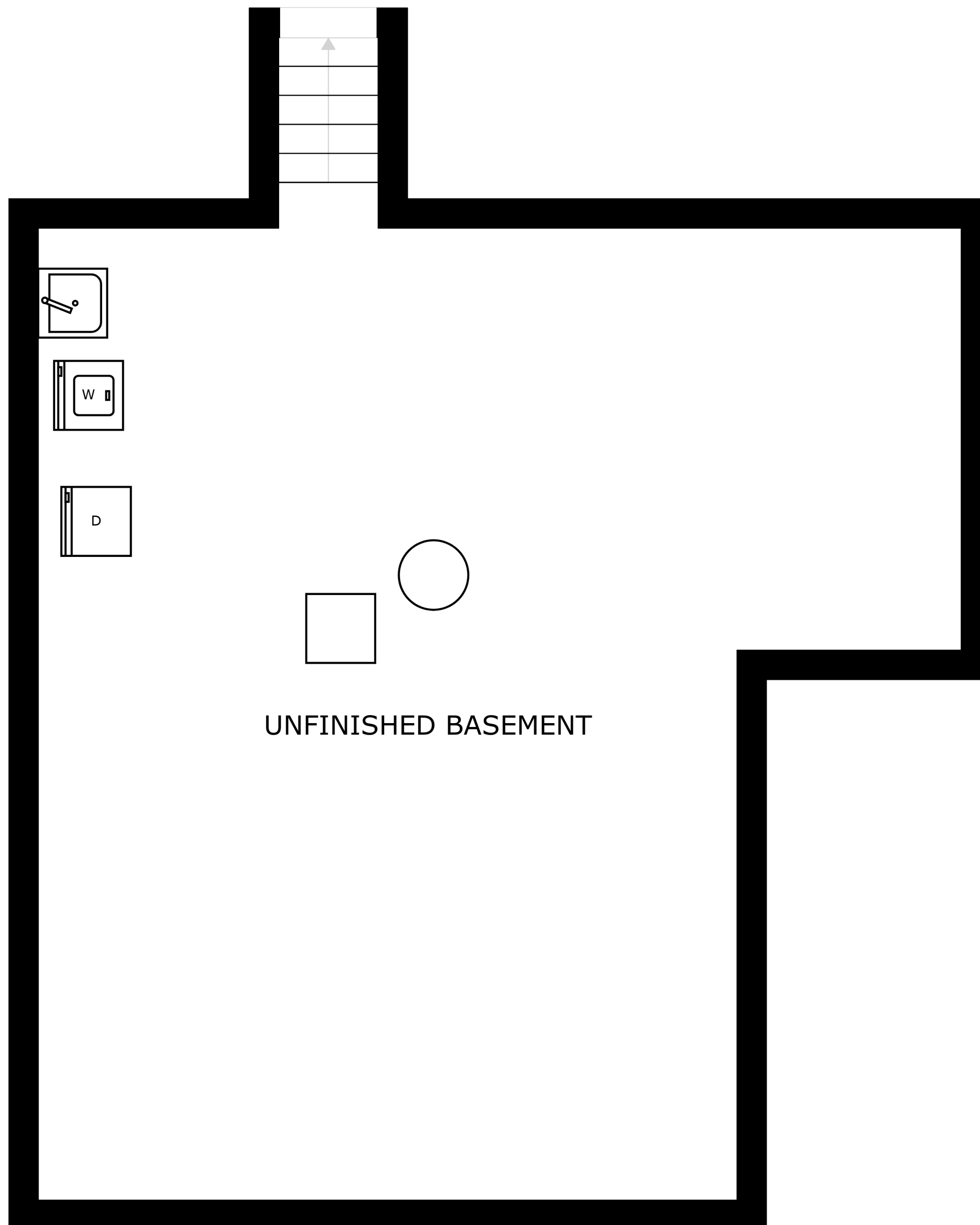
SIZES AND DIMENSIONS ARE APPROXIMATE, ACTUAL MAY VARY.



BEDROOM 4
13'1" x 13'9"

FAMILY ROOM
12'9" x 22'11"

BATH
6'4" x 7'4"



UNFINISHED BASEMENT