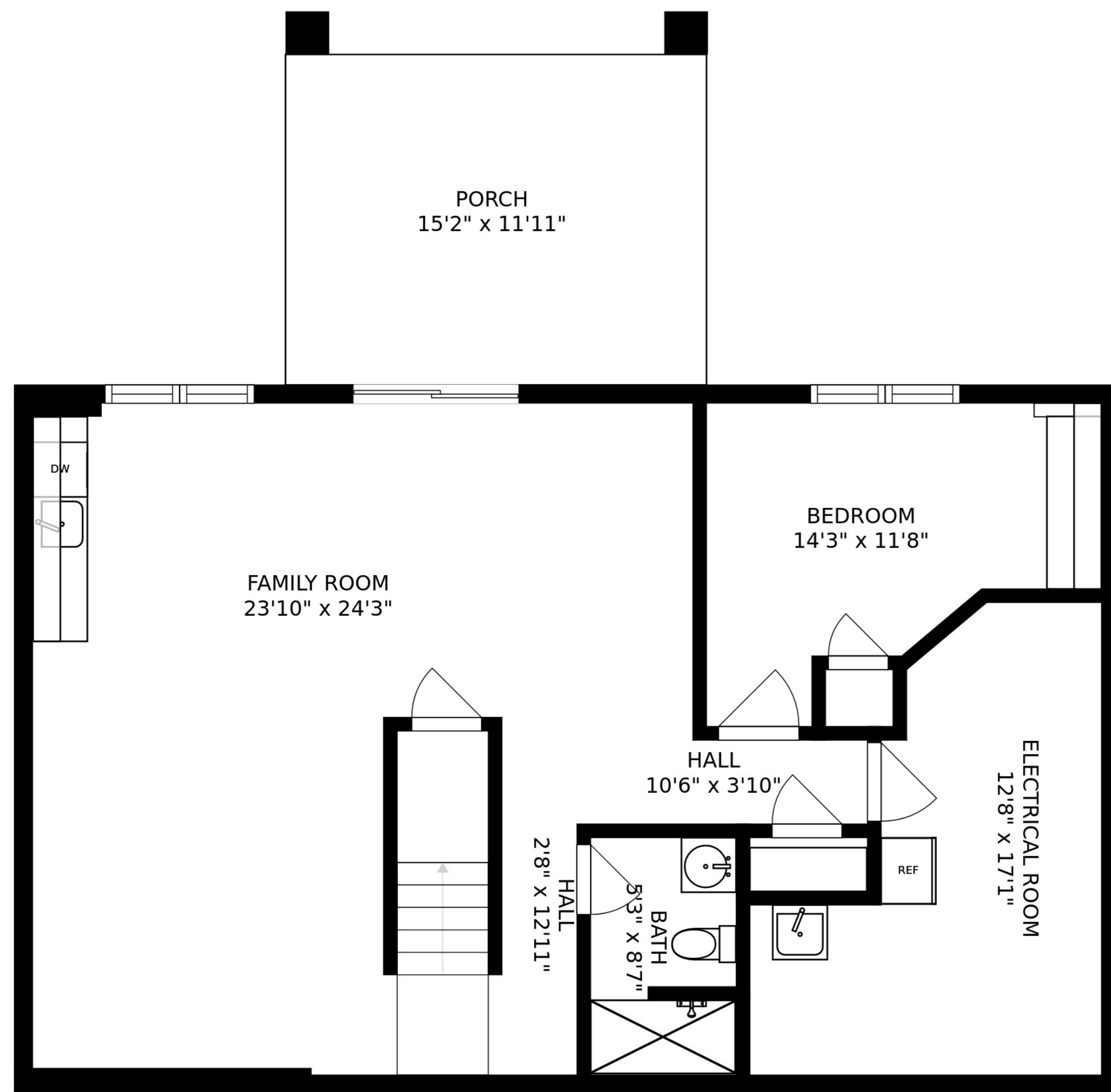
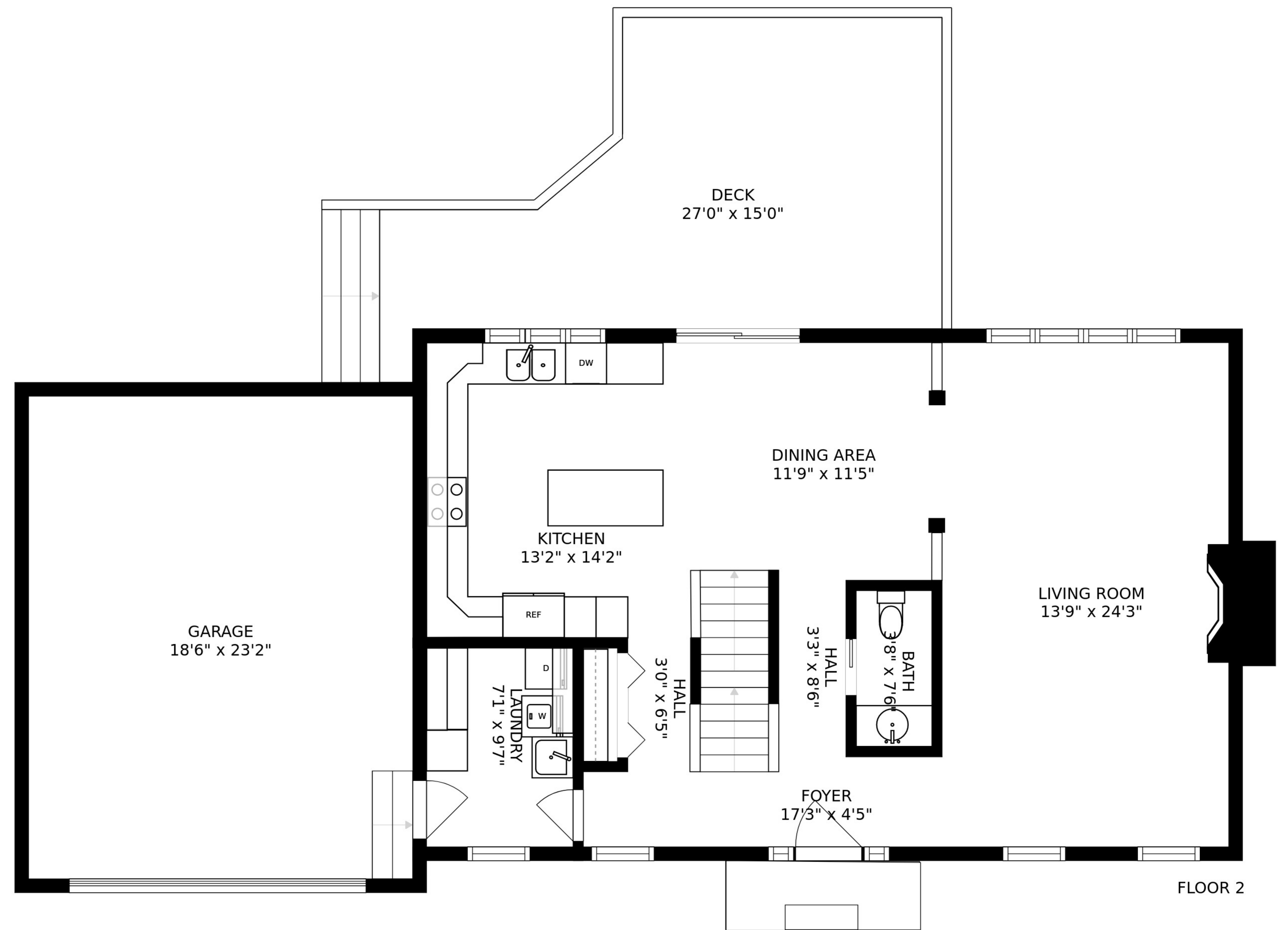


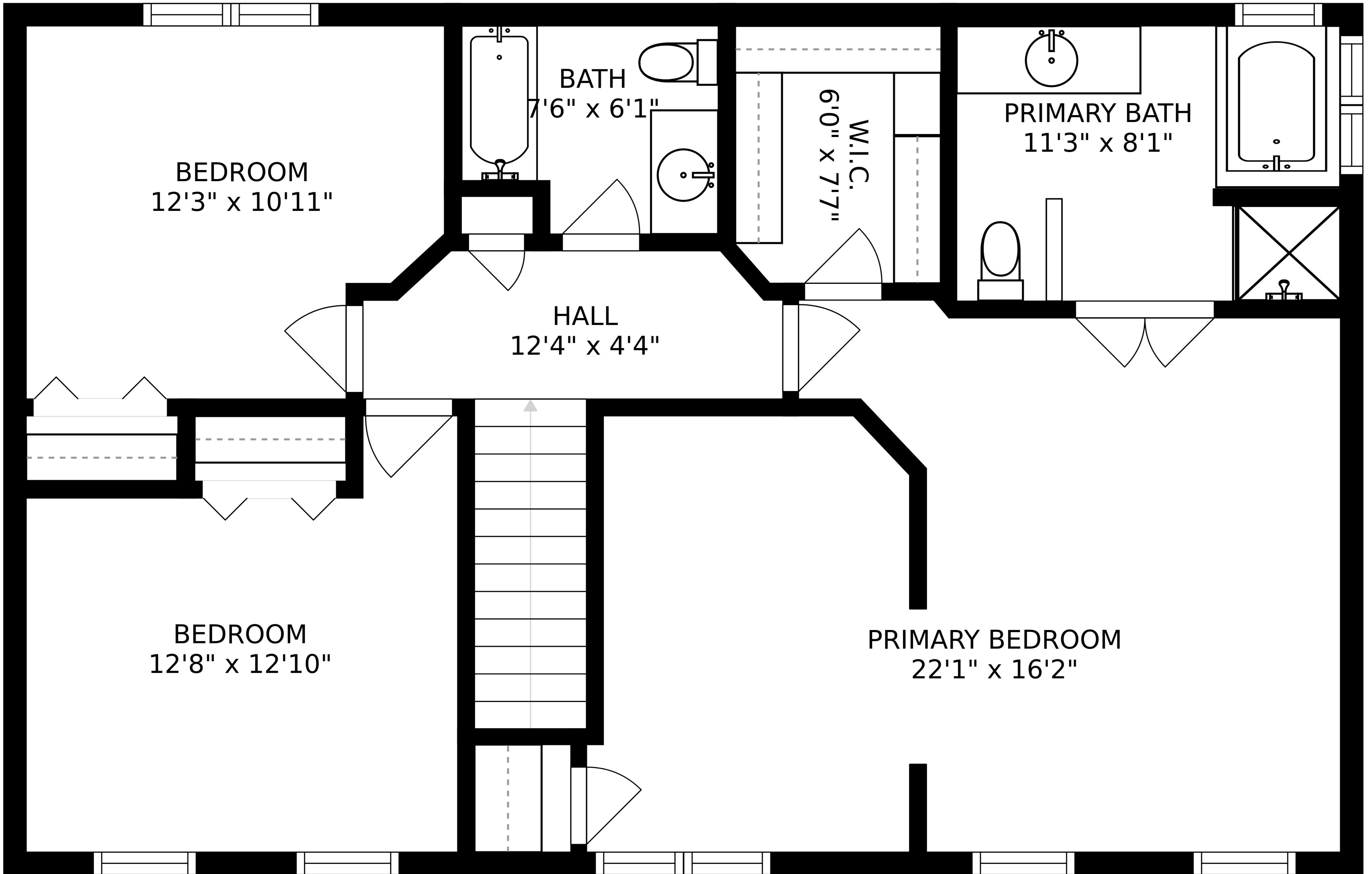
FLOOR 3



FLOOR 1



FLOOR 2



BEDROOM
12'3" x 10'11"

BATH
7'6" x 6'1"

W.I.C.
6'0" x 7'7"

PRIMARY BATH
11'3" x 8'1"

HALL
12'4" x 4'4"

BEDROOM
12'8" x 12'10"

PRIMARY BEDROOM
22'1" x 16'2"

