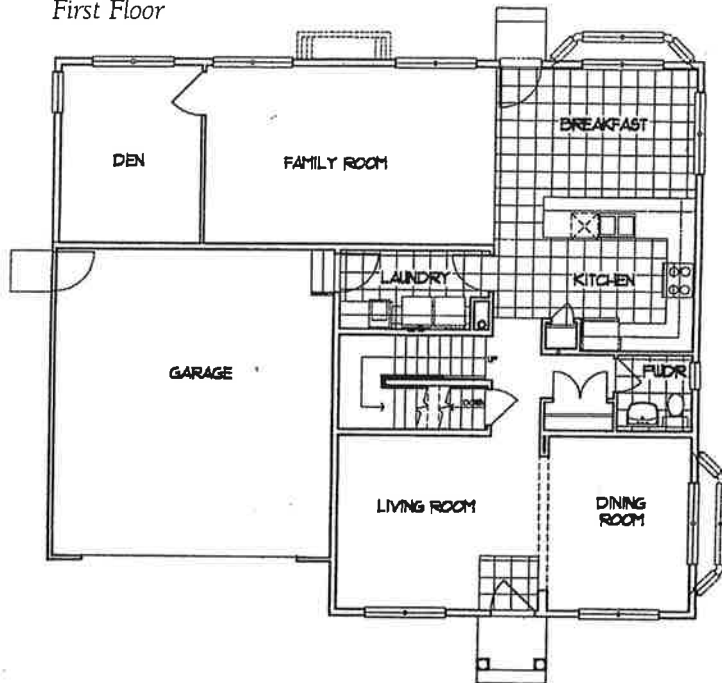


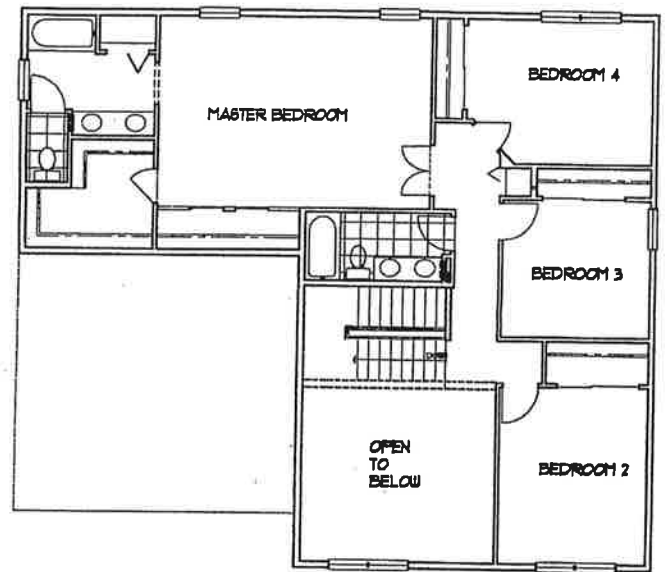
The Windermere

2600 SF

First Floor



Second Floor



1st Floor Features

- Entry foyer with Victorian volume ceiling
- Formal living room with Victorian volume ceiling
- Formal dining room
- Den
- Family room
- Kitchen with storage pantry and peninsula breakfast counter
- Dining nook
- Laundry room
- Hallway coat closet
- Powder room

2nd Floor Features

- Master bedroom suite with oversize walk-in closet, wardrobe closet and private bathroom with linen closet and compartmentalized water closet
- Three additional bedrooms with wardrobe closets
- Additional full hall bath
- Hall linen closet

Additional Possibilities

- Full basement (partial basement is included with this home)
- Walkout basement, per home-site location
- Third car garage bay in lieu of den
- Additional bedroom with wardrobe closet in lieu of living

- Master bedroom retreat in lieu of bedroom 4
- Dining room bay
- Dining nook bay
- Gourmet kitchen with double-oven and separate cooktop
- Ultra master bathroom with separate soaking tub and shower, dual vanities and 50-gallon water heater
- Volume ceiling in master bedroom
- Master bedroom fireplace
- Family room fireplace
- Family room fireplace with media center
- Masonry exterior, per elevation style