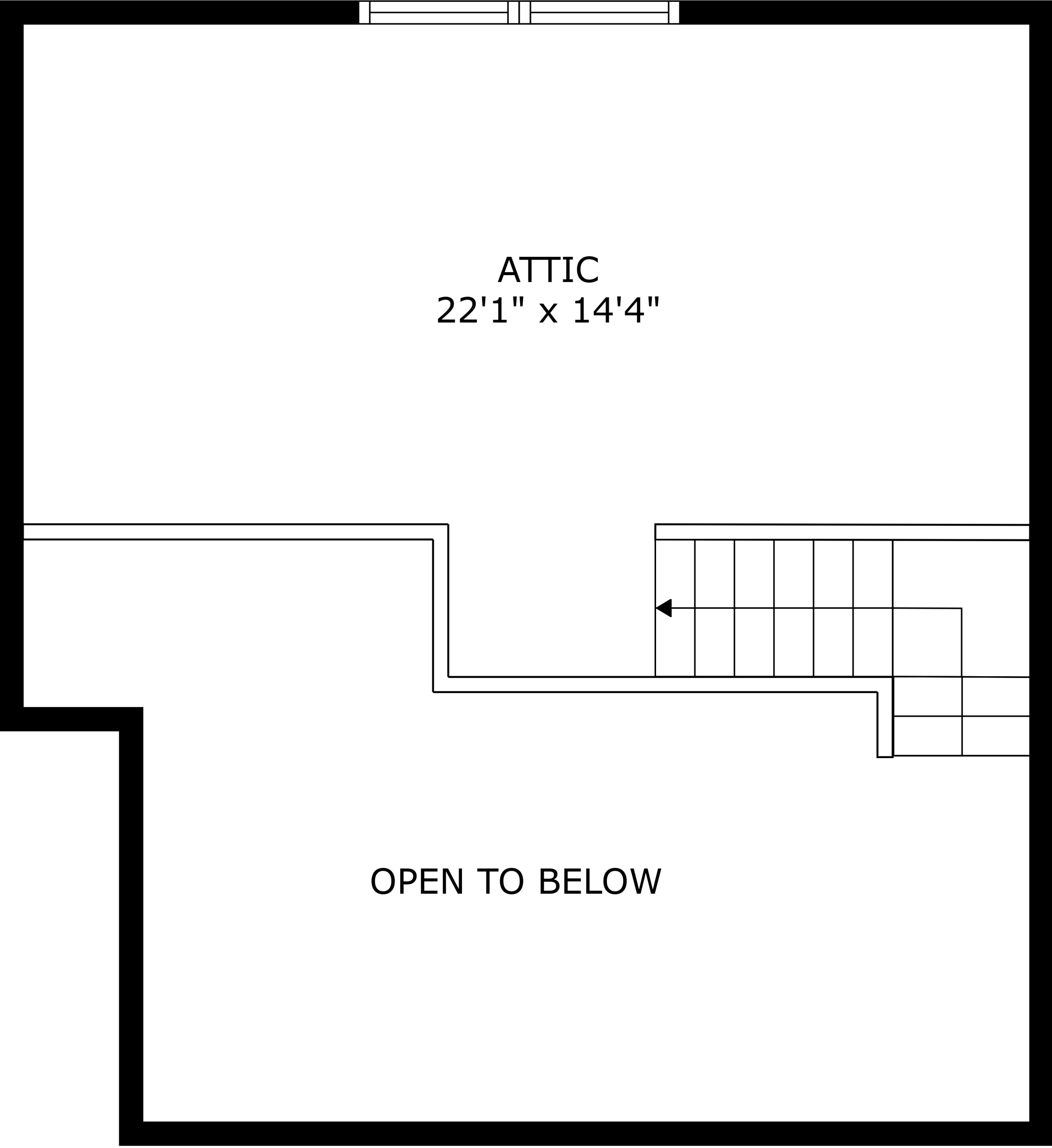


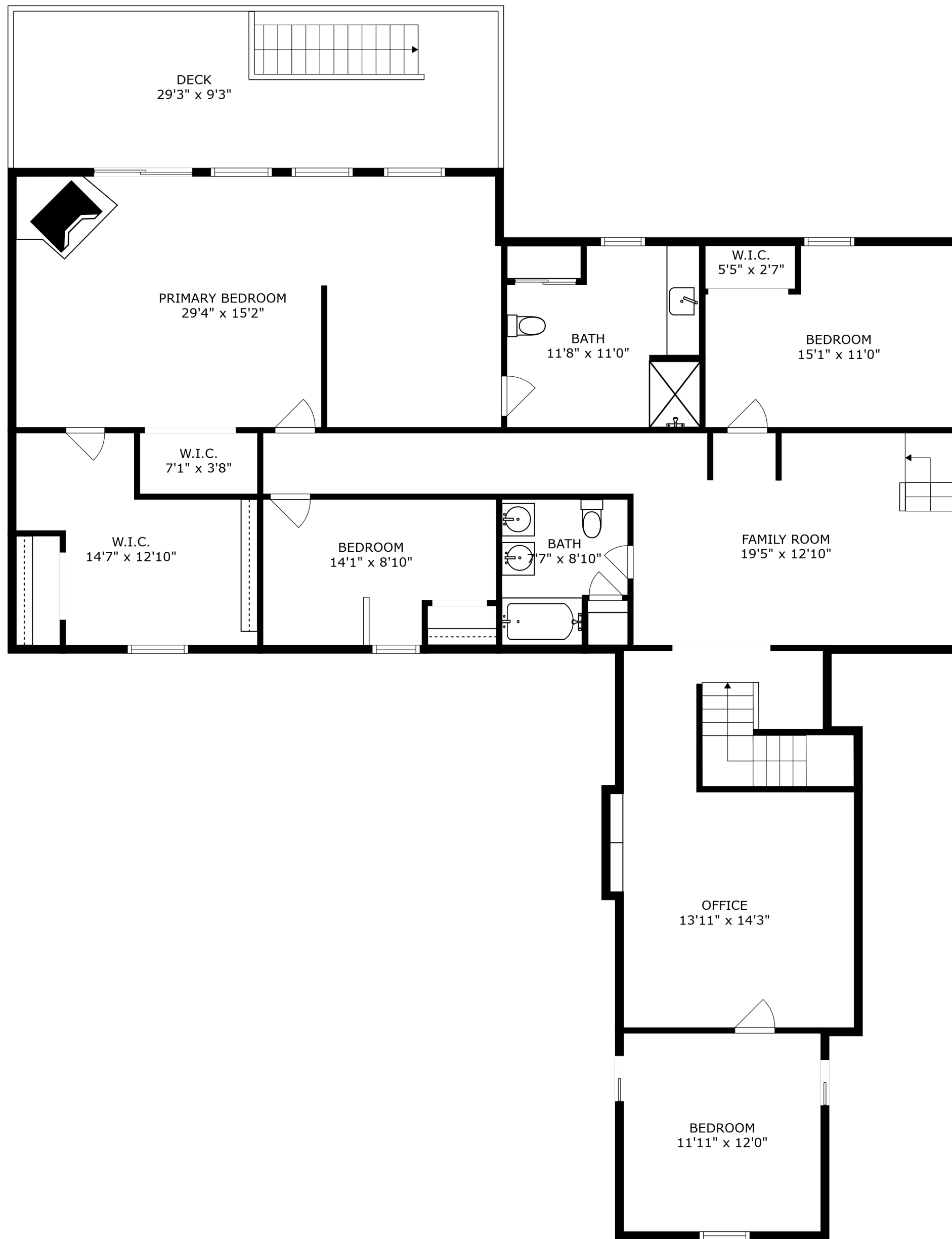
SIZES AND DIMENSIONS ARE APPROXIMATE, ACTUAL MAY VARY.



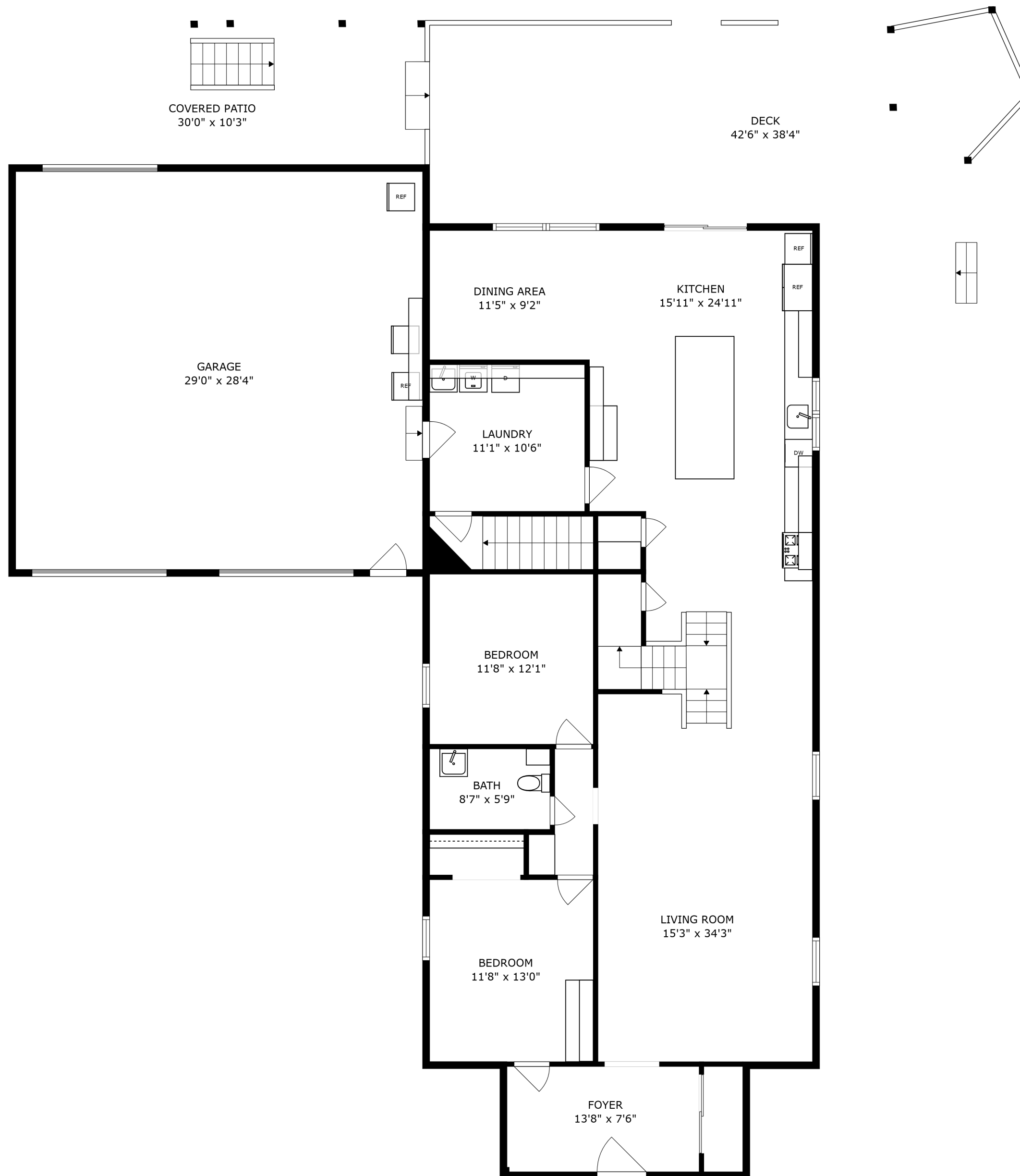
ATTIC
22'1" x 14'4"

The diagram shows a floor plan for an attic. The overall dimensions are 22'1" by 14'4". A staircase is located on the right side, with an arrow pointing to the left, indicating the direction of travel. The staircase is represented by a series of vertical lines. To the left of the staircase, there is a large open area. The text 'ATTIC' and '22'1" x 14'4"' is centered in the upper portion of the plan. The text 'OPEN TO BELOW' is centered in the lower portion of the plan. The entire plan is enclosed in a thick black border.

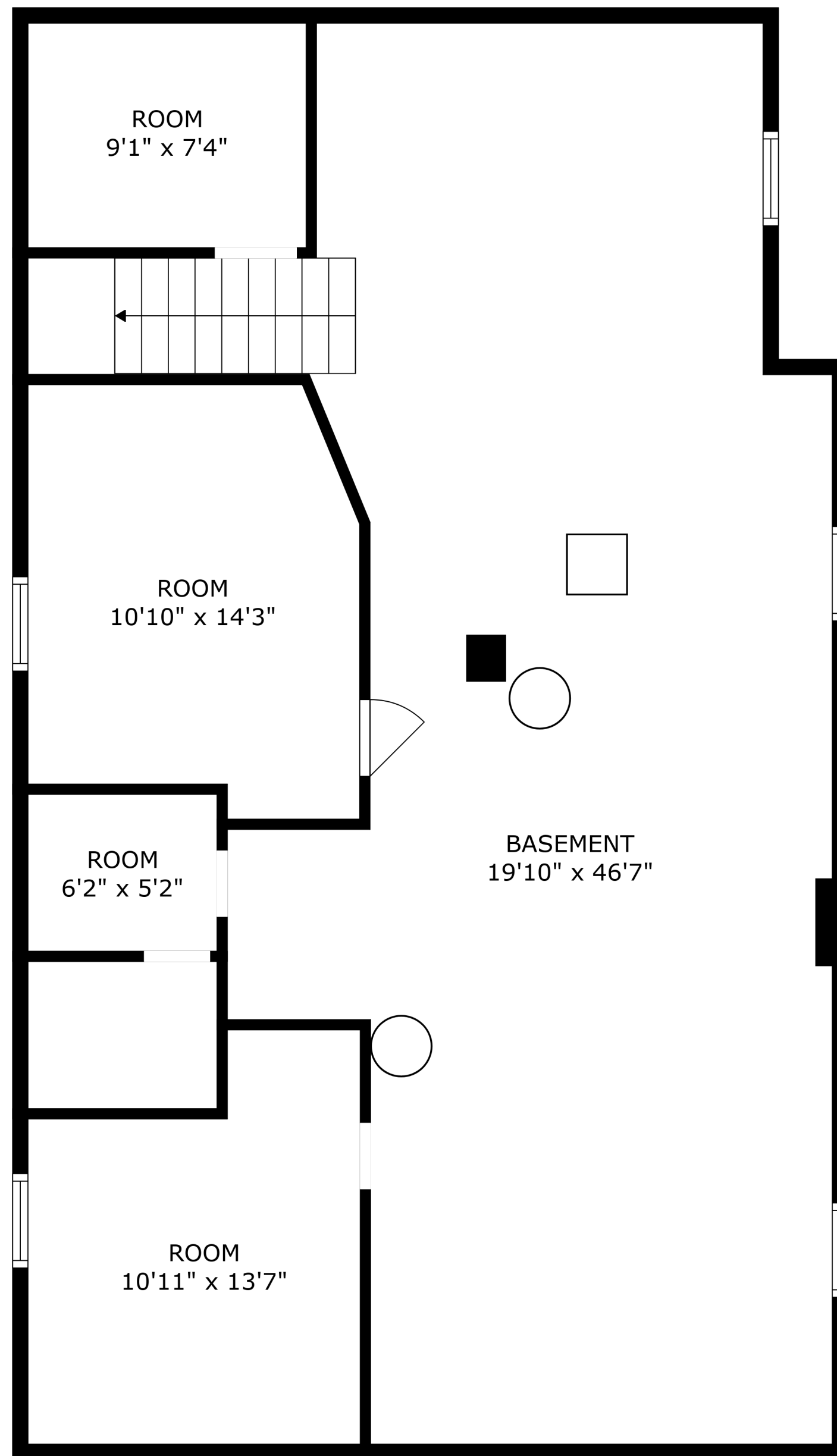
OPEN TO BELOW



SIZES AND DIMENSIONS ARE APPROXIMATE, ACTUAL MAY VARY.



SIZES AND DIMENSIONS ARE APPROXIMATE, ACTUAL MAY VARY.



SIZES AND DIMENSIONS ARE APPROXIMATE, ACTUAL MAY VARY.